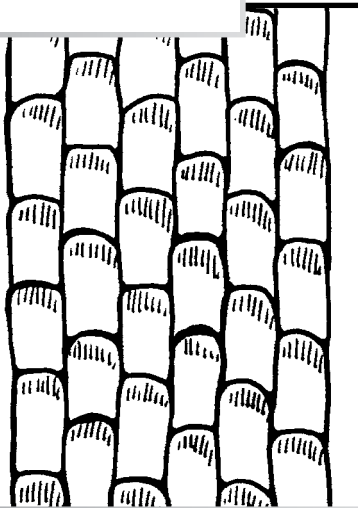
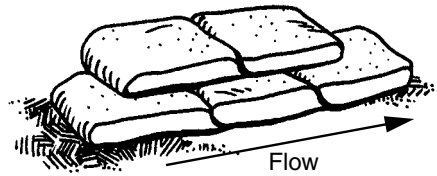
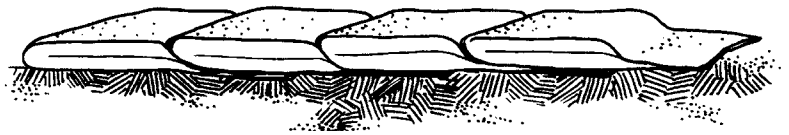


# Stacking Sandbags

Top view of bottom layer



Lapping sandbags



Place bags parallel to the flow of water

5 feet

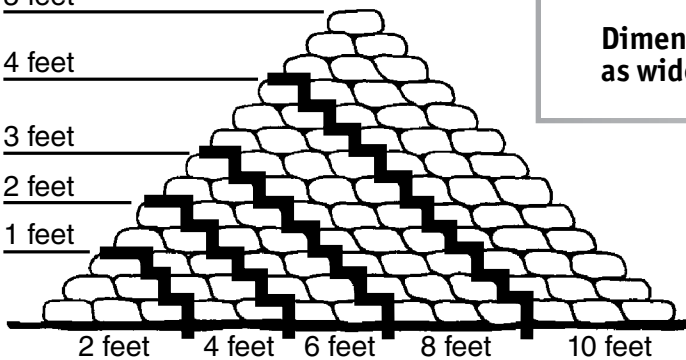
4 feet

3 feet

2 feet

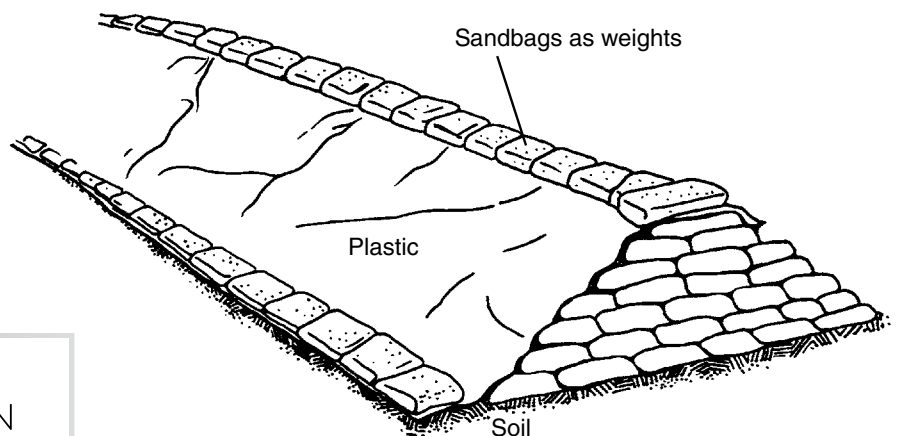
1 feet

2 feet 4 feet 6 feet 8 feet 10 feet



Dimensions of a dike that is twice as wide as it is tall

Sealing the dike



Sandbags as weights

Plastic

Soil

NDSU

EXTENSION