

**2019 NDSU Roundup Ready, Xtend and Enlist Soybean Iron-deficiency Chlorosis Trial - Author, T. Helms (Page 1 of 3).**

Company	Variety	2-site	Company	Variety	2-site
		Mean			Mean
		IDC <sup>1</sup>			IDC <sup>1</sup>
Channel	0218R2X	1.3	Hefty	H03X8	2.0
Pioneer Hi-Bred	01A84X	1.3	P3 Genetics	2003E	2.0
Mustang	03X329	1.3	Peterson Farms Seed	20X05	2.0
Integra	40129E3	1.4	Dahlman	1004E3N	2.0
Pioneer Hi-Bred	03A17X	1.4	Dahlman	6903XN	2.0
Dairyland	DSR-0577E	1.4	Mustang	05E449	2.0
Northstar	90094E3	1.4	Northstar	60092XR2	2.0
Asgrow	AG 0937	1.5	Allegiant	009X08	2.1
Integra	50309NR2X	1.5	Dairyland	DSR-0988/R2Y	2.1
Hefty	H04X8	1.6	Northstar	60555NXR2	2.1
Proseed	XT80-20N	1.6	P3 Genetics	1906E	2.1
Legend	009E955N	1.6	Thunder	TE7003	2.1
Peterson Farms Seed	19EN008	1.6	Channel	0320R2X	2.1
REA Hybrids	RX0228	1.6	Dahlman	6703XN	2.1
Legend	005E953N	1.7	Hefty	H06X8	2.1
Dairyland	DSR-0200/R2Y	1.7	Latham	L0595E3	2.1
Dyna-Gro	S03XT29	1.7	Legend	10E943N	2.1
Legacy	LS-0239NRR2X	1.7	Thunder	TE7906N	2.1
Legacy	LS-00829E3	1.7	Dyna-Gro	S005XT38	2.1
Legacy	LS-0429E3	1.8	LG	LGS00663RX	2.1
BioGene	BG8000RR2X	1.8	Legacy	LS-1220NE3	2.1
Hefty	H02X9	1.8	Legend	LS09X960N	2.1
Northstar	60264NXR2	1.8	REA Hybrids	RX0520	2.1
Northstar	90084NE3	1.8	Allegiant	008X30N	2.2
Allegiant	007X32N	1.8	Dyna-Gro	S05EN70	2.2
LG	LGS0355RX	1.8	Dyna-Gro	S09XT50	2.2
Peterson Farms Seed	19X03	1.8	Integra	20215R2Y	2.2
Thunder	ASTRO R2Y	1.8	NK Brand	NK S12-R3	2.2
Thunder	SB8903N	1.8	Proseed	XT60-09	2.2
REA Hybrids	RX00749	1.8	Thunder	SB88007N	2.2
Hefty	H02E0	1.9	Legacy	LS-0337NRR2X	2.2
REA Hybrids	RX0330	1.9	Mustang	02E119	2.2
Golden Harvest	GH0391	1.9	Mustang	12X928	2.2
LG	LGS1018RX	1.9	Northstar	90544NE3	2.2
NK Brand	NK S03-E3	1.9	REA Hybrids	RX0719	2.2
Dahlman	6004XN	1.9	Stine	07EA36	2.2
Integra	40089E3	1.9	Thunder	36008 R2YN	2.2
Legend	009X852N	1.9	Thunder	TE7902	2.2
Legend	LS03X852N	1.9	Dyna-Gro	S007XT27	2.2
NK Brand	NK S03-G9	1.9	Hefty	H01E9	2.2
Asgrow	AG 0835	2.0	Integra	40999N	2.2
Allegiant	02X21N	2.0	Integra	50510N	2.2
Golden Harvest	GH00866	2.0	Northstar	60065NXR2	2.2
Trial Mean		2.4	Trial Mean		2.4
LSD 0.05		0.4	LSD 0.05		0.4
LSD 0.10		0.3	LSD 0.10		0.3
CV		22.6	CV		22.6

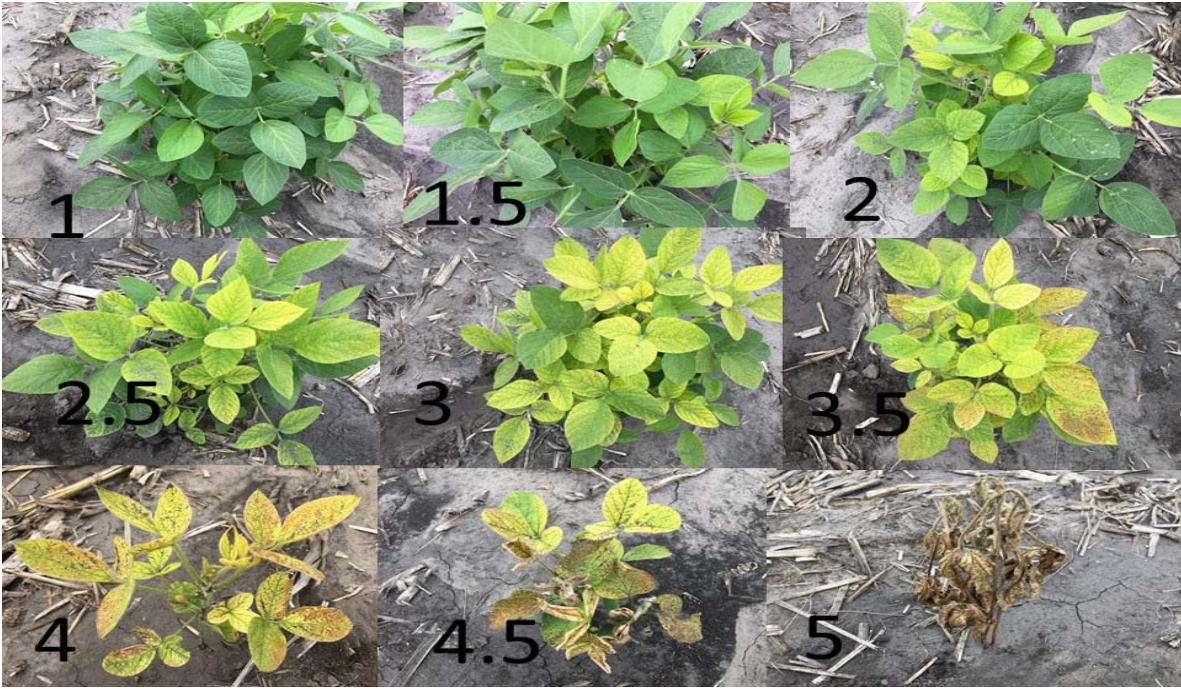
**2019 NDSU Roundup Ready, Xtend and Enlist Soybean Iron-deficiency Chlorosis Trial - Author, T. Helms (Page 2 of 3).**

Company	Variety	2-site	Company	Variety	2-site
		Mean			Mean
		IDC <sup>1</sup>			IDC <sup>1</sup>
Northstar	80854LG+	2.2	Dyna-Gro	S04XT77	2.4
Proseed	EL80-093	2.2	LG	LGS1118RX	2.4
Thunder	SB87009	2.2	Legend	LS08E965E	2.4
Allegiant	01E23	2.3	Peterson Farms Seed	18X08	2.4
Integra	20775	2.3	REA Hybrids	RX0929	2.4
Integra	40209E3	2.3	REA Hybrids	RX1529	2.4
Mustang	06X628	2.3	Dahlman	1011E3N	2.4
Peterson Farms Seed	18X008	2.3	Integra	50629N	2.4
Proseed	EL91-33	2.3	LG	S0735RX	2.4
BASF	CZ729	2.3	Latham	L0883R2X	2.4
BioGene	BG8008RR2X	2.3	Legend	LS07E965N	2.4
Dahlman	1007E3N	2.3	NK Brand	NK S09-D4X	2.4
Dyna-Gro	S13XT89	2.3	P3 Genetics	2002E	2.4
Golden Harvest	GH0936X	2.3	REA Hybrids	RX00810	2.4
LG	LGS00899RX	2.3	BASF	CZ1139	2.4
Legend	007X956N	2.3	BASF	CZ419	2.4
Legend	11LGT950	2.3	Hefty	H008X8	2.4
Legend	LS02E963	2.3	Latham	L0995E3	2.4
Legend	LS05X050N	2.3	Legend	LS06X950N	2.4
NK Brand	NK S02-E3	2.3	Northstar	90334E3	2.4
NK Brand	NK S03-S6X	2.3	Proseed	EL81-13	2.4
Proseed	EL90-53	2.3	Proseed	XT60-40	2.4
Asgrow	AG 05X9N	2.3	Proseed	XT90-90	2.4
BioGene	BG8007RR2X	2.3	Thunder	SB8009N	2.4
Channel	1920R2X	2.3	Thunder	TE7910N	2.4
Dyna-Gro	S009XT68	2.3	Asgrow	AG 1135	2.5
Legacy	LS-0830NRR2x	2.3	Dyna-Gro	S009XT49	2.5
Legend	LS10E943N	2.3	Latham	L0438R2X	2.5
P3 Genetics	1910E	2.3	Legacy	LS-0829E3	2.5
Proseed	XT60-90	2.3	Legend	04E956	2.5
Proseed	XT80-60	2.3	NK Brand	NK S007-Y4	2.5
Dairyland	DSR-0929L	2.3	Northstar	NS 90214E3	2.5
Dahlman	1003E3N	2.3	Channel	0720R2X	2.5
Latham	L0553R2X	2.3	Dahlman	1001E3	2.5
Latham	L1039R2X	2.3	Integra	20300R2Y	2.5
Legacy	LS-00639NRR2X	2.3	Integra	50001R2X	2.5
Legend	02E963	2.3	LG	LGS0400RX	2.5
Legend	LS04E956	2.3	Legacy	LS-1138NRR2X	2.5
Pioneer Hi-Bred	006A37X	2.3	Legend	07E965N	2.5
Pioneer Hi-Bred	00A49X	2.3	Mustang	11E929	2.5
Stine	01EA63	2.3	P3 Genetics	1911E	2.5
Asgrow	AG 05X9	2.4	Golden Harvest	GH0308X	2.5
Asgrow	AG 0832	2.4	Legend	09X960N	2.5
Trial Mean		2.4	Trial Mean		2.4
LSD 0.05		0.4	LSD 0.05		0.4
LSD 0.10		0.3	LSD 0.10		0.3
CV		22.6	CV		22.6

**2019 NDSU Roundup Ready, Xtend and Enlist Soybean Iron-deficiency Chlorosis Trial - Author, T. Helms (Page 3 of 3).**

Company	Variety	2-site	Company	Variety	2-site
		Mean			Mean
		IDC <sup>1</sup>			IDC <sup>1</sup>
Proseed	XT90-06	2.5	Golden Harvest	GH1317X	2.8
Channel	1020R2X	2.6	Hefty	H01X0	2.8
LG	LGS1575RX	2.6	LG	C1337RX	2.8
U. of M.	MN06R-614008	2.6	NDSU	ND18008GT	2.8
Proseed	EL80-33	2.6	NK Brand	NK S07-Q4X	2.8
Channel	1520R2X	2.6	BASF	CZ309	2.8
Dahlman	6811XN	2.6	Dairyland	DSR-C999/R2y	2.8
Golden Harvest	GH0145X	2.6	Dahlman	60009X	2.8
Hefty	H03E9	2.6	Dairyland	DSR-0717E	2.9
LG	LGS0111RX	2.6	Legend	12E925N	2.9
Legacy	LS-00930RR2X	2.6	NK Brand	NK S10-H7X	2.9
P3 Genetics	2005E	2.6	Northstar	NS 90764NE3	2.9
Proseed	30-20	2.6	Peterson Farms Seed	16R01	2.9
REA Hybrids	RX1030	2.6	P3 Genetics	2013B	2.9
Stine	09EA02	2.6	Proseed	BX80-35	2.9
Dyna-Gro	S06XT59	2.6	Thunder	SB8001	2.9
Dyna-Gro	S11XT78	2.6	NK Brand	NK S006-R7X	2.9
Integra	50850N	2.6	Allegiant	04X08N	2.9
Integra	51229N	2.6	Dyna-Gro	S11EN40	2.9
Legacy	LS-0438RR2X	2.6	P3 Genetics	1907E	2.9
Legacy	LS-0629NE3	2.6	Proseed	50-10	2.9
Legacy	LS-0638NRR2X	2.6	Proseed	EL91-23	2.9
Legend	06X950N	2.6	BASF	CZ1280	3.0
P3 Genetics	2013E	2.6	Golden Harvest	GH0749X	3.0
Proseed	EL80-93	2.6	Integra	40829	3.0
Dyna-Gro	S14EN90	2.7	Stine	13EA12	3.0
Integra	20097R2Y	2.7	Dahlman	1014E3N	3.0
Latham	L0982R2	2.7	Thunder	SB8807N	3.0
Mustang	10929	2.7	Legacy	LS-0738NRR2X	3.0
NK Brand	NK S01-C4X	2.7	Legend	08E965N	3.0
Northstar	NS 60823NXR2	2.7	NK Brand	NK S02-F9X	3.1
Dyna-Gro	S07XT28	2.7	P3 Genetics	1905B	3.1
Thunder	TE7001	2.7	Thunder	SB8906N	3.1
Dairyland	DSR-0847E	2.7	LG	C1000RX	3.1
Syngenta	NKS06-K4X	2.7	NDSU	ND17009GT	3.1
REA Hybrids	RX1439	2.8	Northstar	NS 80405LG+	3.1
BASF	CZ590	2.8	NDSU	ND15-22873(GT)	3.2
Golden Harvest	GH0543X	2.8	Syngenta	NKS008-N2	3.2
Mustang	12E220	2.8	Peterson Farms Seed	20X01	3.2
NK Brand	NK S05-N5X	2.8	Dairyland	DSR-1120/R2Y	3.3
Peterson Farms Seed	20X09	2.8			
Trial Mean		2.4	Trial Mean		2.4
LSD 0.05		0.4	LSD 0.05		0.4
LSD 0.10		0.3	LSD 0.10		0.3
CV		22.6	CV		22.6

<sup>1</sup>IDC score was 1-5, with 1-green, 3-yellow, 5-dead tissue.



Soybean plants with IDC scores; 1 is green and 5 is dead tissue.