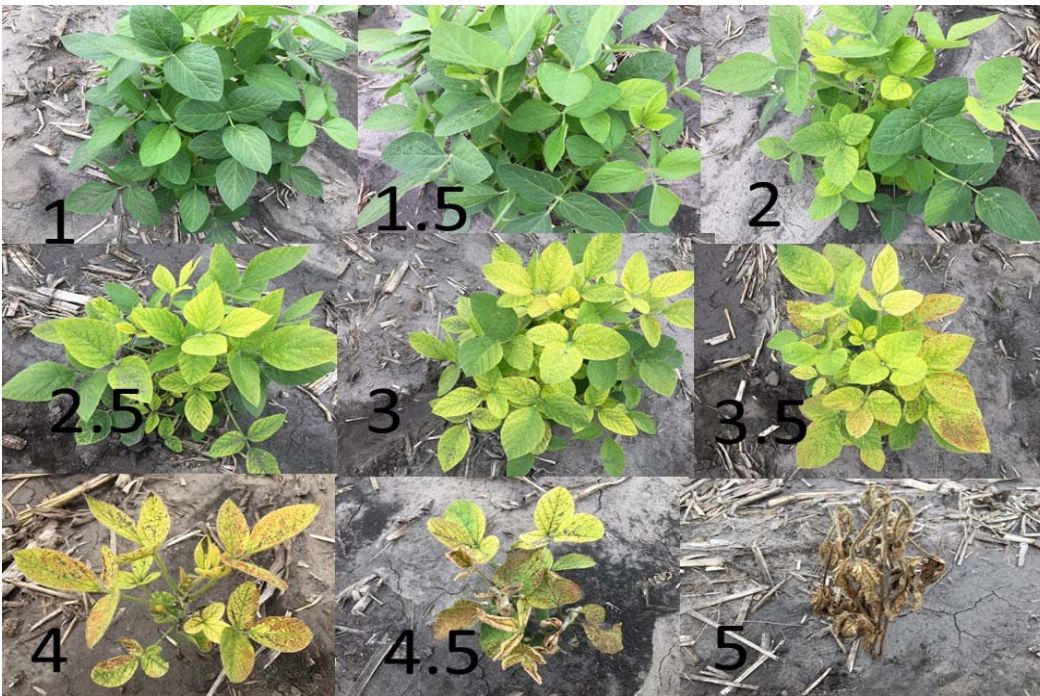


**2020 NDSU Conventional and Liberty Link Soybean Iron-deficiency Chlorosis Trial - Author, T. Helms.**

		2-site			2-site
		Mean			Mean
Company	Variety	IDC <sup>1</sup>	Company	Variety	IDC <sup>1</sup>
Richland IFC	MK0249	1.7	Prograin	Atena	2.4
Richland IFC	MK0603	1.8	Brushvale	BS1512	2.5
NDSU	ND Stutsman	1.9	Prograin	PR110308Z030	2.5
NDSU	ND Rolette	1.9	Legacy	LC0070-20	2.6
NDSU	ND Dickey	1.9	Sevita	Astor	2.6
Legacy	LC130-20	1.9	Brushvale	BS1282	2.7
Richland IFC	MK0508	2.0	Prograin	Hana	2.7
NDSU	ND Benson	2.0	Richland IFC	MK146	2.7
Brushvale	BS1345	2.1	Richland IFC	MK808CN	2.8
Prograin	PR110197Z037	2.1	Legacy	LC0090-20	2.8
Prograin	Marula	2.2	Sevita	Panorama	2.8
NDSU	ProSoy	2.2	NDSU	Sargent	2.8
Richland IFC	MK1016	2.3	Brushvale	BS1146	2.9
Legacy	LC020-20	2.3	Legacy	LC0080-20	2.9
Richland IFC	MK41	2.4	Legacy	LC120-20	3.1
NDSU	ND1406HP	2.4	Sevita	Skyline	3.4
NDSU	ND Henson	2.4			
Mean		2.4	Mean		2.4
LSD 0.05		0.3	LSD 0.05		0.3
LSD 0.10		0.2	LSD 0.10		0.2
CV		17.2	CV		17.2

<sup>1</sup>IDC score was 1-5, with 1-green, 3-yellow, 5-dead tissue.



Soybean plants with IDC scores; 1 is green and 5 is dead tissue.