

North Dakota Tree Selector

General

Scientific Name: *Populus deltoides*

Family: Salicaceae (Willow)

Hardiness: Zone 2

Leaves: Deciduous

Plant Type: Tree

Growth

Rate: Fast

Mature Height: >45'

Longevity: Long

Power Line: No

Ornamental

Flowers: Inconspicuous

Fruit: Light, fluffy 'cotton' released in early summer

Fall Color: Yellow

Cottonwood

Description

The largest and fastest growing tree in the state. Native to moist soils along streams and wetlands throughout North Dakota. Flood control dams have reduced spring flooding and therefore the success of natural cottonwood regeneration along riparian areas. The largest living tree in North Dakota is 110 feet tall with a canopy spread of 94 feet.

Preferences

Light: Full Sun.

Water: Medium.

Soil: Moist, well drained soils.

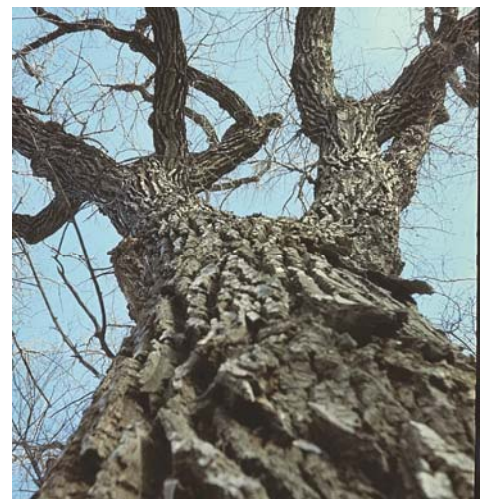
Comments

Technically, *Populus deltoides* is Eastern cottonwood, while the natural variety Plains cottonwood (*P. deltoides* var. *occidentalis*) is found in western North Dakota and further west in the Great Plains. The ranges of Eastern cottonwood and Plains cottonwood overlap.

Cottonwood is dioecious, meaning that there are separate male trees and female trees. 'Siouxland' cottonwood (*Populus deltoides* 'Siouxland') is a male and is therefore seedless. It is also rust-resistant and was released by SDSU, Brookings, South Dakota.

Populus deltoides is one of the parents in a number of hybrid poplars, conferring cold hardiness and fast growth.

Credits: Tree Selector Website, https://plants.usda.gov/factsheet/pdf/fs_pode3.pdf



NDSU

www.ag.ndsu.edu/tree-selector

NDSU does not discriminate in its programs and activities on the basis of age, color, gender expression/identity, genetic information, marital status, national origin, participation in lawful off-campus activity, physical or mental disability, pregnancy, public assistance status, race, religion, sex, sexual orientation, spousal relationship to current employee, or veteran status, as applicable. Direct inquiries to Vice Provost for Title IX/ADA Coordinator, Old Main 201, NDSU Main Campus, 701-231-7708, ndsu.eoaa@ndsu.edu. This publication will be made available in alternative formats for people with disabilities upon request, 701-231-7881.