



# North Dakota Forest Service

## the prairie forester

Vol. 30 No. 1

Spring 2016

### ARBOR DAYS CELEBRATE 40 YEARS OF TREE CITY USA



### TREE CITY USA®

Sixteen communities across the nation have been part of the Tree City USA program since the beginning in 1976. Two of those original celebrating 40 years are from North Dakota...Grand Forks and Mandan! The Tree City USA program is sponsored by the Arbor Day Foundation in partnership with the US Forest Service and the National Association of State Foresters. The Tree City USA program honors communities for their commitment to effective urban forest management. Both communities have been invited by the Arbor Day Foundation to the Arbor Day Awards Banquet held April 30 at the Lied Lodge and Conference Center in Nebraska City, Nebraska.

“Tree City USA communities benefit everyone when they make smart investments in urban forests,” said State Forester Larry Kotchman. “Trees bring shade to our homes and beauty to our neighborhoods, along with numerous economic, social and environmental benefits.”

North Dakota officially observes Arbor Day on the first Friday in May. However, communities may proclaim and celebrate any day as Arbor Day. The North Dakota Forest Service has designated both cities with the honor of being declared hosts of the State Arbor Day Celebration.



GRAND FORKS  
PARK DISTRICT

Grand Forks has scheduled their 40<sup>th</sup> Tree City USA Celebration on May 19 at 9:30 a.m. at the new Kiwanis Park. Their theme is “40 for 40” and 40 trees will be planted at the park by 75 students from Discovery Elementary School. Each student will receive a tree cookie with the #40 burned into it. The event is sponsored by the City of Grand Forks and the Grand Forks Park District.

The City of Mandan has scheduled their 40<sup>th</sup> Tree City USA Celebration



CITY OF  
**MANDAN**  
"WHERE THE WEST BEGINS"

on May 6 at 10 a.m. at the Lewis & Clark Elementary School, where a Thunder Child flowering crab tree will be planted by the students.



United Tribes Technical College (UTTC) in Bismarck, ND, is one of the first two tribal colleges in the nation to achieve Tree Campus USA status this year along with the Blackfeet Community College in Browning, MT! UTTC is the second campus in North Dakota following North Dakota State University in Fargo in 2012. Tree Campus USA was created in 2008 to honor campuses for promoting healthy urban forestry management and engaging the campus community in environmental stewardship. Their event will be held at the Skills Center on May 6 at 2:30 p.m.



UNITED TRIBES  
TECHNICAL COLLEGE

## A View from the Top of the Tree

Trees benefit our communities. People enjoy their shade, their beauty and the wildlife that live within them. Although people may not consider what it takes to maintain trees, they are an integral and important part of a community's infrastructure for a number of reasons.

They are the green infrastructure that pays us back in so many ways. Trees are vital to the health of a community by providing clean air, clean water, and psychological well-being. Trees have a positive impact on home value, health recovery, employee productivity, decreased crime, and with more attractive businesses we get more shoppers who bring more dollars to the community.

We congratulate the cities of Grand Forks and Mandan for their commitment to the Tree City USA program. They are 2 of the 16 original communities celebrating 40 years in 2016. More than 3,400 communities of all sizes are part of the Tree City USA program. North Dakota currently has 52 Tree City USA communities. The smallest Tree City USA community is Sibley, North Dakota, with a population of 28; proving firsthand that you don't need to be a big city to care about trees.

There are two more community-related tree programs supported by the Arbor Day Foundation, US Forest Service,



**Larry A. Kotchman**  
**State Forester**

and State Foresters. The Tree Campus USA program recognizes two- and four-year accredited colleges and universities that meet standards and sustain healthy community forests. The Tree Line USA program recognizes best practices in utility arboriculture. In North Dakota, Montana Dakota Utilities is number one!

Our children and grandchildren will reap the benefits of the trees we plant and maintain today. Trees are a wise use of community budget dollars. Thank you all for recognizing trees are worth our time and resources!

A handwritten signature in black ink that reads "Larry A. Kotchman".

---

## ND State Arbor Day Poster Contest Winner

*By: Glenda Fauske, Information and Education Coordinator*



**Espen Kunze**  
**St. Catherine's School**  
**Arbor Day Poster Contest Winner**

Espen Kunze, a fifth grader at St. Catherine's School in Valley City was selected as the first place winner of the 2016 State Arbor Day Poster Contest. The purpose of the contest is to encourage planting a tree, increase awareness of the benefits trees provide, and celebrate Arbor Day.

The Arbor Day Poster Contest is part of the Keep North Dakota Clean (KNDC) Poster Contest. KNDC is the largest and longest running poster contest in the state. Over 12,000 students in grades PreK-8 took part

this year. The 48<sup>th</sup> awards ceremony will be held at 11 a.m. on Friday, April 22, at the Lewis and Clark Center in Washburn, ND. All first place winners receive \$100 in cash, a certificate, gold medallion, and have their poster turned into a billboard and placed along a major highway by Newman Outdoor Advertising! The winners, their families and teachers are recognized at the ceremony, receive a noon luncheon, and can spend the afternoon at the Center and Fort Mandan.

# Seeking Nominations for the 2016 Trees Awards

By: Tom Claeys, Forestry and Fire Management Team Leader

The North Dakota Forest Service and North Dakota State University annually recognize individuals, organizations and agencies that contribute in an outstanding way to forestry activities. If you know of someone who deserves recognition for their contributions, we would like to publicly thank them for their devotion to forestry activities. Forestry activities can include: fire mitigation, protection and suppression; tree planting, preservation, or maintenance; community forestry efforts; forest management practices; forest recreation; or environmental education.

The deadline for submitting nominations for the 2016 Trees Awards is August 5, 2016. The awards will be presented during special recognition ceremonies at the Trees Bowl in the Fargodome on



September 10. Each award winner will be presented a personalized engraved plaque at an awards ceremony and recognized for their efforts during half-time at the NDSU Bison football game against Eastern Washington of Cheney, WA.

Selection committee members will evaluate each nomination and vote for

candidates based upon the degree to which they meet the requirements outlined in the award category descriptions.

Categories include:

**Community  
Conservation Achievement  
Distinguished Service  
Excellence in Government  
Fire Department Cooperator  
Media Outreach  
Natural Resources Professional  
Tree Celebration  
Volunteer Organization  
Youth Tree Planters**

To secure a nomination packet, please contact Tom Claeys, Forestry and Fire Management Team Leader at [Thomas.Claeys@ndsu.edu](mailto:Thomas.Claeys@ndsu.edu) or call (701) 328-9945.

---

## Community Forestry Grants

By: Gerri Makay, Community Forestry Manager

North Dakota Forest Service (NDFS) Community Forestry Grants are available for tree planting and program development projects. The application deadline is April 30, 2016. Eligible applicants include counties, townships, cities, towns, park districts, school districts, and tribal equivalents. All grants require a match in the form of cash or in-kind. Be sure to coordinate the project planning efforts with a NDFS Community Forestry staff member.

Tree planting projects must be located on public property (city park, school grounds, county park, boulevard); include a design plan with planting locations clearly specified; and utilize

a variety of species that are northern hardy and suitable for the site.

Smaller-scale planting projects are perfect for the **Community Family Forest grant**, with awards up to \$2,000 for Tree City USA communities, and \$1,500 awards for all other North Dakota communities. Projects must match the award 80:20, making this grant suitable for a wide range of applicants.

For larger-scale planting projects, the **America the Beautiful (ATB) Tree Planting grant** offers awards up to \$10,000 with a match of 50:50.

The **America the Beautiful (ATB) Program Development grant** offers awards up to \$10,000 and a 50:50 match from the applicant for community forestry efforts other than planting trees. Grant funds may be used to generate inventories of street or park trees; develop a community ***Emerald Ash Borer (EAB) Preparedness Plan***; removal of ash trees as part of an ***EAB Preparedness Plan*** (this is a great follow-up to an NDFS CTAP inventory); removal of high-risk trees; or educational outreach to expand awareness of community forestry issues. Contact [Gerri.Makay@ndsu.edu](mailto:Gerri.Makay@ndsu.edu); (701) 652-2951 for more information.



# Summer Professional Development for K-12 Teachers

By: *Glenda E. Fauske, Information and Education Coordinator*

2016 Geographically FIT  
(*Forestry Institute for Teachers*)

## Human Geography:

### Faces and Places

August 1-4, 2016 – K-12

Cost: 2 credits, + \$25 workshop fee

Some evening meals on your own.

Register at:

[www.ndgeographic.org](http://www.ndgeographic.org)

This “classroom on wheels” tour will study people from the past and evaluate present day communities, culture and interactions with the forest, riparian, and prairie environments in the Pembina Gorge area. Visiting experts and local people will present content rich, hands-on outdoor experiences, and individual and group activities at Icelandic State

Park, Tetrault State Forest, Gingras Trading Post, Pembina Museum and a Christmas Tree Farm. We will not only look at the social, environmental, and economic changes, but will also look at how to minimize negative impacts and protect water quality.

## Commemorate–Educate–Motivate

Heritage Center - Bismarck, ND

June 27-29, 2016

Cost: 1 credit

Register at:

[www.ndsu.edu/its/advanced\\_apps\\_internet2/ndtrcsummerinstitute2016/](http://www.ndsu.edu/its/advanced_apps_internet2/ndtrcsummerinstitute2016/)

The ND Teacher Resource Coalition is happy to announce this summer’s session topics will include

notable people, places and events of North Dakota and around the world, along with the resources and events that commemorate them. Featured will be sessions on commemorations of the National Park Service, Shakespeare’s 400<sup>th</sup> birthday anniversary, the Pulitzer Prize, and historical sites in ND. Additional topics will explore applications in the curriculum, including the use of remote sensing technologies to manage and preserve cultural and natural environments, as well as the Maker Movement in K-12 education. There is no workshop fee, just the credit payment. Participants will need to cover their own travel, lodging and one evening meal.

## Howard and Rebecca Rude Land Gift

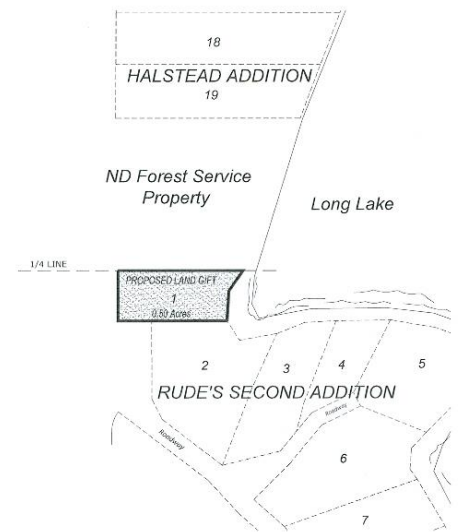
By: *Tom Nowatzki, State Forests Manager*



adjacent Long Lake Recreation Area that consists of a concrete boat ramp, restrooms, and parking areas for boat trailers and vehicles. The Long Lake Recreation Area is the only public boat landing on Long Lake. This land gift will provide a forested buffer between the public recreation area and the adjacent lake homes being built on Rude’s Second Addition.

Ask any sportsman or woman what is important to their hunting and fishing experience and almost universally you will get one answer—access to places to hunt and fish.

For more information on North Dakota Forest Service public recreation areas across the state contact Tom Nowatzki, State Forests Manager by calling (701) 228-3700 or email [thomas.nowatzki@ndsu.edu](mailto:thomas.nowatzki@ndsu.edu).



***The plot map shows the land gift in the shaded and outlined area in relation to the ND Forest Service property to the north.***

# Emerald Ash Borer Awareness Week

By: Aaron Bergdahl, Forest Health Manager, and Lezlee Johnson, Community Forestry Specialist

Emerald Ash Borer Awareness Week will be observed May 22-28, 2016. Last year, over 40 communities throughout North Dakota participated in this coordinated outreach effort led by the North Dakota Forest Service, North Dakota Department of Agriculture, and NDSU Extension Forestry. Although the emerald ash borer (EAB) has not been found in North Dakota, the objective of this event is to highlight potential community tree losses and to stress preparedness for when EAB arrives. Core messages include diversifying community tree resources; discouraging the movement of firewood; being aware of the signs of EAB damage to trees; and reporting suspect ash trees to the North Dakota Department of Agriculture, North Dakota Forest Service, or NDSU Extension Forestry.

Participating communities receive packages containing laminated fliers with various EAB preparedness messages. Flagging is included that can be used to tie the fliers to green ash trees in high-visibility areas in the community. This serves to highlight the potential loss of specific community trees should EAB impact the participating town. Also, included in the package is a flash drive with a set of materials that can be used for discussing EAB with the public, local media, or community leaders. In past years, several media sources have covered this event and have helped to spread the most current information about EAB.

It is important for North Dakota communities to be aware of and prepared for EAB. Since 2012, the North Dakota Forest Service has inventoried municipal trees in over eighty North Dakota communities. The average city tree in North Dakota is eleven inches in diameter and is in good to fair condition. It is also as likely to be an ash tree as it is to be any other tree. Green ash itself makes up over 46 percent of our municipal tree population. Black and Manchurian ash comprise an additional two percent of ash species susceptible to EAB in municipal plantings. This makes North Dakota more vulnerable to the EAB than any other state that has been infested with the pest. To ensure North Dakota remains EAB-free, early detection is important. Currently, communities are reducing the potential future impact of EAB by increasing awareness of the pest and by planting other tree species.



*The ash trees at Tommy Turtle Park in Bottineau educate visitors on the threat and implications of EAB. Photo: Aaron Bergdahl, ND Forest Service.*

Prepare for...

# EAB

(The Emerald Ash Borer)

Ash trees make up nearly half of the tree population in North Dakota's communities.

**That's a lot of trees!**

A 14-inch ash tree is worth \$5,300 and increases in value every year. It provides \$157 in ecosystem services every year. (Source: National Tree Research Council)

**That's a lot of money!**



Emerald ash borer (EAB) has not been found in North Dakota yet, but when it arrives, it could change our urban and rural forests drastically.

**What Can You Do?**

- Don't bring firewood into North Dakota. Use local sources.
- If people you know are coming to North Dakota, tell them to leave firewood at home. "Someone already has brought it, burn it immediately!"
- Learn to know the signs and symptoms of emerald ash borer on local tree species.
- Plant tree species other than ash (fraxinus spp.). EAB only attacks ash trees. There are no known resistant species or cultivars.

**EAB Actual Size**

*Above is a flyer with helpful tips on preventing the spread of EAB and information highlighting the potential economic impacts of EAB should it arrive.*

If your community would like to join the effort to increase public awareness of the potential impact of this destructive pest, please contact:

Aaron Bergdahl  
Forest Health Manager  
(701) 231-5138  
aaron.d.bergdahl@ndsu.edu  
or  
Lezlee Johnson  
Community Forestry Specialist  
(701) 231-5138, Ext. 4  
lezlee.johnson@ndsu.edu

# An Early Fire Season This Spring

By: Anthony Schultz, Cooperative Fire Protection Manager

North Dakota has the potential to experience an earlier than normal fire season this spring. These conditions have been made possible by drier and warmer than average winter months. Currently, 83 percent of North Dakota is in a drought category of “Abnormally Dry” while Counties such as Barnes, LaMoure, and Stutsman are experiencing “Moderate Drought” conditions. On an average year, the state of North Dakota can expect the fire season to start in mid-March and last until green-up, the period in which grasses and plants begin to grow in late-April to mid-May. This spring, North Dakota has had the potential for fires since mid to late February!

Any vegetation that can burn in these fires is called “fuel.” In North Dakota



***A “Red Flag Warning” means the conditions of dry fuel, heat, and wind have the potential to create a fire.***

this fuel is primarily composed of grasses and shrubs. The problem arises after winter months when the grasses are still dormant. This leaves them dry, brown, and susceptible to easy fire-spread. In North Dakota, with our grass fuel type, wind is the primary fire concern. On high-wind days, the public is encouraged to be

smart and safe with their use of fire, and fire departments are encouraged to be prepared to respond. On days where explosive fire growth potential exists a “Red Flag Warning” will be issued. This warning serves as a vehicle to alert fire departments, land management agencies, and the public of these extremely hazardous conditions.

The North Dakota Forest Service encourages checking the ND Department of Emergency Services website [www.nd.gov/des/](http://www.nd.gov/des/) on a daily basis to view adjective fire danger ratings; stay informed on the current fire potential in any area; and view county issued burn bans. For more information, contact Anthony Schultz at (701) 328-9944.

---

## Forestry Datelines

April 22	Keep ND Clean Awards Ceremony 11 a.m. - Washburn, ND Contact: Glenda Fauske at (701) 228-5446	May 18	BioBlitz – International Peace Garden 9:30 a.m. to 2 p.m. Contact: Glenda Fauske at (701) 228-5446
April 30	Community Forestry Grant Deadline for Spring Grants Contact: Gerri Makay at (701) 652-2951	May 19	ND State Arbor Day Celebration City of Grand Forks – “40 for 40” Kiwanis Park at 9:30 a.m. Contact: Mike Fugazzi at (701) 746-2750
May 5-7	ArcheoBlitz – Knife River Indian Villages Contact: Craig Hansen at (701) 745-3300		Coalition for Conservation and Environmental Education Spring Meeting ND State Water Commission, Bismarck, ND Contact: Glenda Fauske at (701) 228-5446
May 6	ND State Arbor Day Celebrations City of Mandan 10 a.m., Lewis & Clark Elementary School Contact: Kaiden Straabe at (701) 751-7894 United Tribes Technical College 2:30 p.m., Skills Center Contact: Russ McDonald at (701) 255-3285	May 24-25	Theodore Roosevelt National Park BioBlitz Contact: Amy McCann at (701) 623-4466
	BioBlitz - North Elmwood Park, West Fargo 10 a.m. to 2:30 p.m. Contact: Glenda Fauske at (701) 228-5446	June 2-4	ND Firefighter’s 132 <sup>nd</sup> Convention Bottineau, ND Contact: Renee Loh at (701) 222-2799
		June 15	ND Community Forestry Council and State Stewardship Coordinating Committee Contact: Bob Harsel at (701) 683-4323



## People in Forestry

Each year, North Dakota State University (NDSU) recognizes staff who have passed milestones in years of service. The annual NDSU Staff Recognition Social will be held on Wednesday, April 13, 2016, at 1:30 p.m. in the Great Plains Ballroom in the Student Union on the campus in Fargo. The honorees will receive an NDSU Bookstore gift certificate based on years of service. The following ND Forest Service staff will be recognized:

### 30 YEARS

**Lorin Fornes**, Forestry Technician at Lisbon and **Jerome Suchor**, Field Production Specialist at Towner.

### 20 YEARS

**Geraldine Makay**, Community Forestry Manager at Carrington.

### 5 YEARS

**Ryan Melin**, Fire Manager in Bismarck and **Rhonda Schell**, Sales and Office Manager at Towner.

**Leanne Marten**, is the new Regional Forester for the US Forest Service Northern Region stationed in Missoula, Montana. She has worked before in Montana and Idaho and now adds North Dakota and the northwest corner of South Dakota to her portfolio.

Marten comes to the Region from the Forest Service's national office based in Washington where she most recently served as the Director of Ecosystem Management Coordination. She has been with the agency for more than two decades.

She holds a Bachelor's of Science degree in Environmental Science from Washington State University and a Master's of Science degree in Forest Resources from the University of Idaho. Marten is married and has two sons.

---

## BioBlitz 2016

*By: Glenda Fauske, Information and Education Coordinator*

In celebration of the National Park Service's 100<sup>th</sup> Anniversary, the National Geographic Society has created an initiative to support BioBlitz events across America. What is a BioBlitz? Bio, as in biology, the study of living organisms, and Blitz, which means a sudden energetic and focused endeavor. A BioBlitz is an event that focuses on finding and identifying as many species as possible in a specific area over a short period of time. A BioBlitz can be an effective way to inspire young people to explore their local geography, become stewards of their natural resources, and lead conservation efforts.

At a BioBlitz, scientists, natural resource professionals, students, teachers, families, and volunteer community members work together to get an overall count of the plants, animals, and other organisms (or

items) in that area. Someone may find the first of a new species!

The North Dakota Geographic Alliance provided pass-through funds to the North Dakota Forest Service Project Learning Tree program to coordinate two BioBlitz events. The first will be held from 10 a.m. to 2:30 p.m. on Friday, May 6, at North Elmwood Park in West Fargo, ND, and involves the students of Sara Forness from West Fargo High School. Additional sponsors include the City of West Fargo Parks District and the Natural Resources Conservation Service.

The second will be held from 10:30 a.m. to 2 p.m. on May 18 at the International Peace Garden (also a sponsor) near Dunseith, ND, and involves the students of Deb Nelson from the Bottineau Public School. Both schools will be using a portion of

the grant funds to purchase scientific research equipment and supplies for their school.

The ND Geographic Alliance is also partnering with the National Park Service for a third BioBlitz at Theodore Roosevelt National Park in Medora, ND, on May 24-25, 2016. The fourth event will be held at Knife River Indian Villages at Stanton, ND, May 5-7 and will be an ArcheoBlitz. The first two days will give area 7<sup>th</sup> and 8<sup>th</sup> grade students the opportunity to conduct supervised archeological field research. The last day is open to the public and includes Native performing arts groups and research presentations throughout the day.

The public is welcome to participate in any of these events. Join in the fun of helping the students observe, record and identify plants and animals.

*The Prairie Forester*  
is a publication of the



## North Dakota Forest Service

307 1st Street East  
Bottineau, ND 58318-1100

State Forester: Larry A. Kotchman  
Editor: Glenda E. Fauske  
Tel: (701) 228-5422  
Fax: (701) 228-5448  
[www.ndsu.edu/ndfs](http://www.ndsu.edu/ndfs)

*"The mission of the North Dakota  
Forest Service is to care for, protect  
and improve forests and natural  
resources to enhance the quality of life  
for future generations."*

To save resources, please let us know if  
your mailing address has changed or is  
incorrect. Call (701) 228-5446.

## Field Offices

### Bismarck NDFS Office

Tel: (701) 328-9944

### Bottineau NDFS Field Office

Tel: (701) 228-3700

### Bottineau NDFS Headquarters

Tel: (701) 228-5422

### Carrington NDFS Office

Tel: (701) 652-2951

### Fargo NDFS Forest Health Specialist

Tel: (701) 231-5138

### Fargo NDFS Nursery and State Forests

Team Leader

Tel: (701) 231-5936

### Jamestown NDFS Office

Tel: (701) 400-8330

### Lisbon NDFS Office

Tel: (701) 683-4323

### Towner State Nursery

Tel: (701) 537-5636

### Walhalla NDFS Office

Tel: (701) 549-2441

# NDSU

North Dakota State University does not discriminate on the basis of age, color, disability, gender expression/identity, genetic information, marital status, national origin, public assistance status, race, religion, sex, sexual orientation, or status as a U.S. veteran. Direct inquiries to the Vice President for Equity, Diversity and Global Outreach, 102 Putnam Hall, (701) 231-7708.

**This publication will be made available in alternative formats  
upon request by calling (701) 228-5446.**