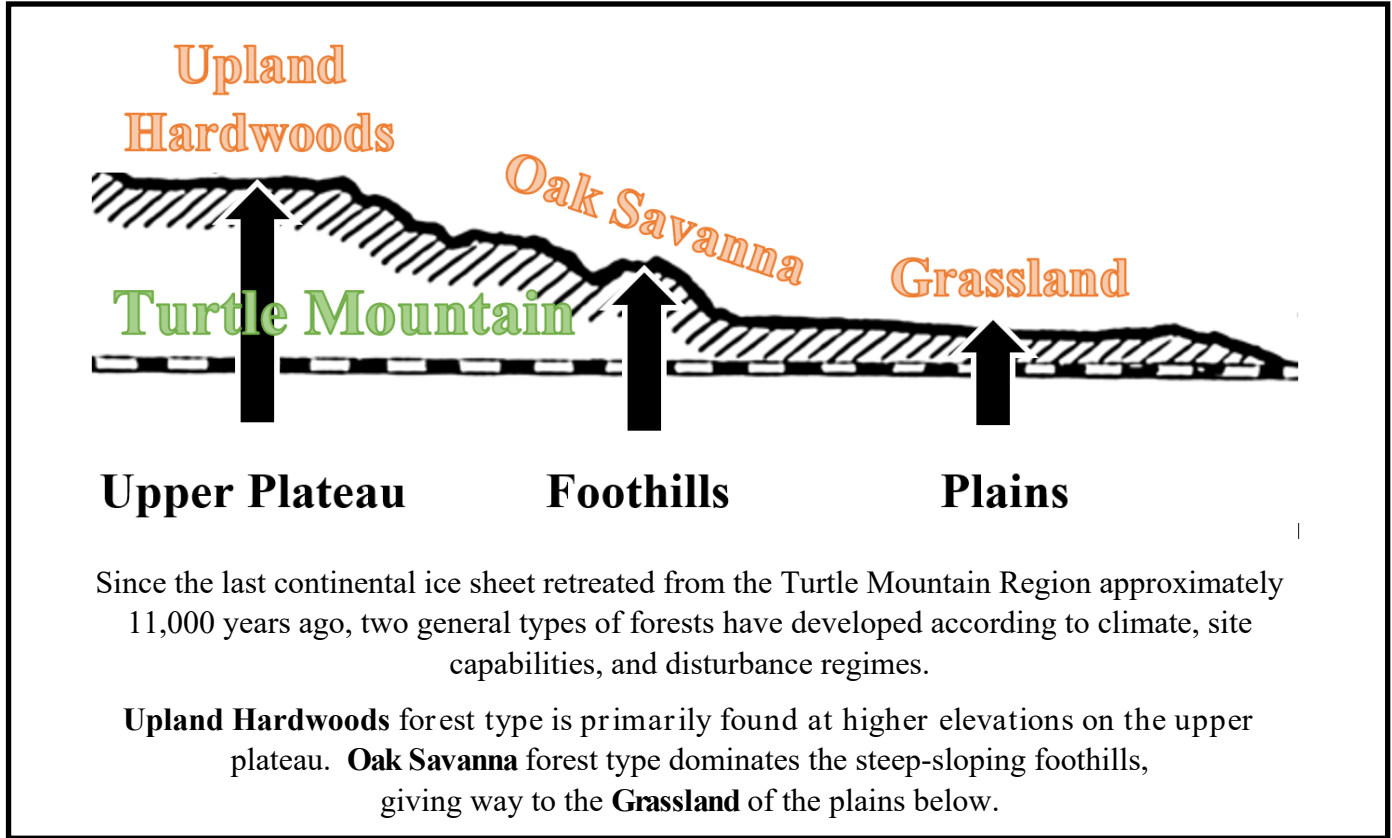


# Upland Hardwoods



# Oak Savanna



Quaking Aspen  
*Populus tremuloides*

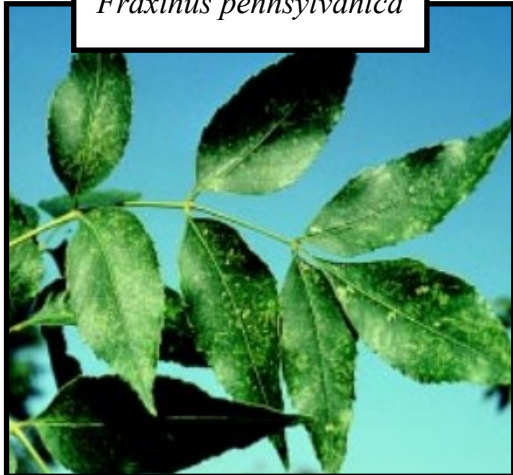


Bur Oak  
*Quercus macrocarpa*

American Elm\*  
*Ulmus americana*



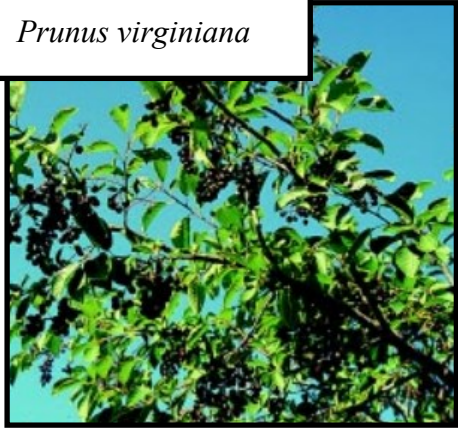
Green Ash  
*Fraxinus pennsylvanica*



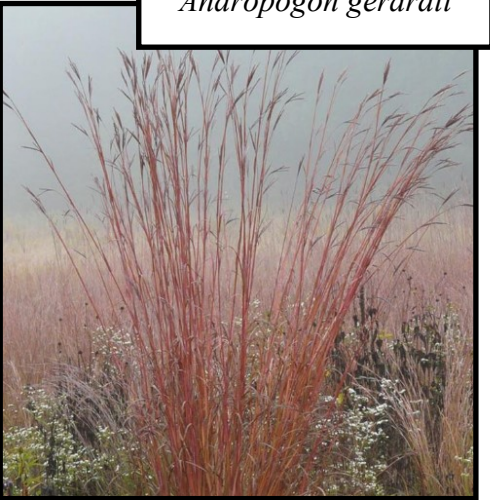
Sprengel's Sedge  
*Carex sprengelii*



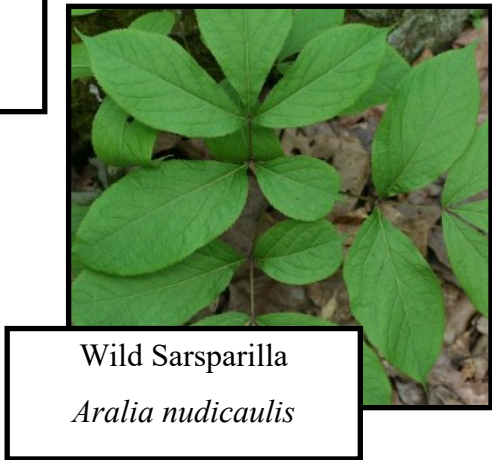
Chokecherry  
*Prunus virginiana*



Big Bluestem  
*Andropogon gerardii*



Beaked Hazel  
*Corylus cornuta*



Wild Sarsparilla  
*Aralia nudicaulis*



Juneberry  
*Amelanchier alnifolia*



Green Needlegrass  
*Stipa viridula*

\* Historically, American elm made up approximately 10% of the upland hardwood forest. This percentage has been reduced due to Dutch elm disease and mature American elm are now rarely found.

Dozens of additional trees, shrubs, grasses and forbs - native, non-native and invasive - can be found in upland hardwoods and oak savanna forests.

### Little bit of History....

Before European settlement, the woody vegetation present in the Turtle Mountain region was indicative of a forest system that was adapted to disturbances that maintained a vigorous forest system. These disturbances created new growth resulting in a diversity of age classes which helped reduce the spread of pests and diseases that typically attack overly mature stands. Early settlers logged the forest for fuel and building materials, which helped create small disturbance events.

Over time, there has been a major decrease in the amount of wood harvested for timber or firewood and almost complete suppression of wildfire. The last major wildfire was in 1886 and burned almost the whole Turtle Mountain region. Lack of disturbance has resulted in a forest stand that is over mature and in decline.



Today, mechanical equipment can be used to mimic natural disturbances. A skid steer with a hydraulic saw (left) is used to clear dead or dying trees and shrub undergrowth leaving mature healthy trees (above.)

Following treatment (below) a flush of new aspen outcompetes the less desirable species. As the aspen mature, they will naturally thin themselves out.



The Mission of the NDSU-North Dakota Forest Service is to care for, protect, and improve forest and natural resources to enhance the quality of life for present and future generations.

Working in cooperation with rural landowners, urban residents, communities, rural fire districts, schools, and other governmental entities, NDFS provides technical assistance relating to the management of private forest lands, state forest lands, urban and community forests, tree planting and wildfire protection.

The agency also operates a forest tree nursery and manages its own state forest lands.

[www.ndsu.edu/ndfs](http://www.ndsu.edu/ndfs)

USDA In accordance with Federal civil rights law and U.S. Department of Agriculture (USDA) civil rights regulations and policies, the USDA, its Agencies, offices, and employees, and institutions participating in or administering USDA programs are prohibited from discriminating based on race, color, national origin, religion, sex, gender identity (including gender expression), sexual orientation, disability, age, marital status, family/ parental status, income derived from a public assistance program, political beliefs, or reprisal or retaliation for prior civil rights activity, in any program or activity conducted or funded by USDA (not all bases apply to all programs). Remedies and complaint filing deadlines vary by program or incident. Persons with disabilities who require alternative means of communication for program information (e.g., Braille, large print, audiotape, American Sign Language, etc.) should contact the responsible Agency or USDA's TARGET Center at (202) 720-2600 (voice and TTY) or contact USDA through the Federal Relay Service at (800) 877-8339. Additionally, program information may be made available in languages other than English. To file a program discrimination complaint, complete the USDA Program Discrimination Complaint Form, AD-3027, found online at How to File a Program Discrimination Complaint and at any USDA office or write a letter addressed to USDA and provide in the letter all of the information requested in the form. To request a copy of the complaint form, call (866) 632-9992. Submit your completed form or letter to USDA by: (1) mail: U.S. Department of Agriculture, Office of the Assistant Secretary for Civil Rights, 1400 Independence Avenue, SW, Washington, D.C. 20250-9410; (2) fax: (202) 690-7442; or (3) email: [program.intake@usda.gov](mailto:program.intake@usda.gov). USDA is an equal opportunity provider, employer, and lender.

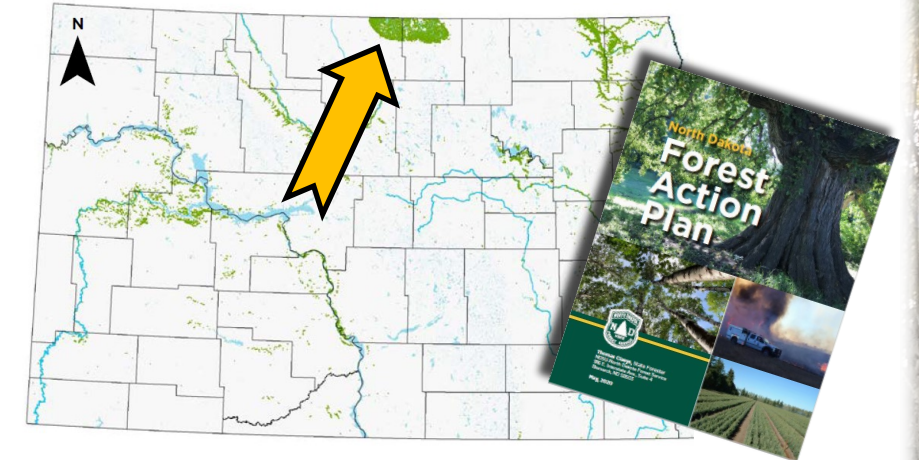
NDSU does not discriminate in its programs and activities on the basis of age, color, gender expression/identity, genetic information, marital status, national origin, participation in lawful off-campus activity, physical or mental disability, pregnancy, public assistance status, race, religion, sex, sexual orientation, spousal relationship to current employee, or veteran status, as applicable. Direct inquiries to Vice Provost, TitleIX/ADA Coordinator, Old Main 201, 701-231-7708, [ndsu.coaa@ndsu.edu](mailto:ndsu.coaa@ndsu.edu).

This publication is provided with funding from the USDA-Forest Service.

**NDSU** NORTH DAKOTA STATE UNIVERSITY

August 2022

# Get to know your Turtle Mountain Region Forest



Rising 800 feet above the surrounding drift prairie and characterized by hundreds of lakes and wetlands, the North Dakota portion of the Turtle Mountain plateau encompasses approximately 90,000 acres and supports a cover of deciduous forest - the largest concentration of native forest in the state. The region has been identified as a Priority Forest Area in North Dakota's 2020 Forest Action Plan.

