

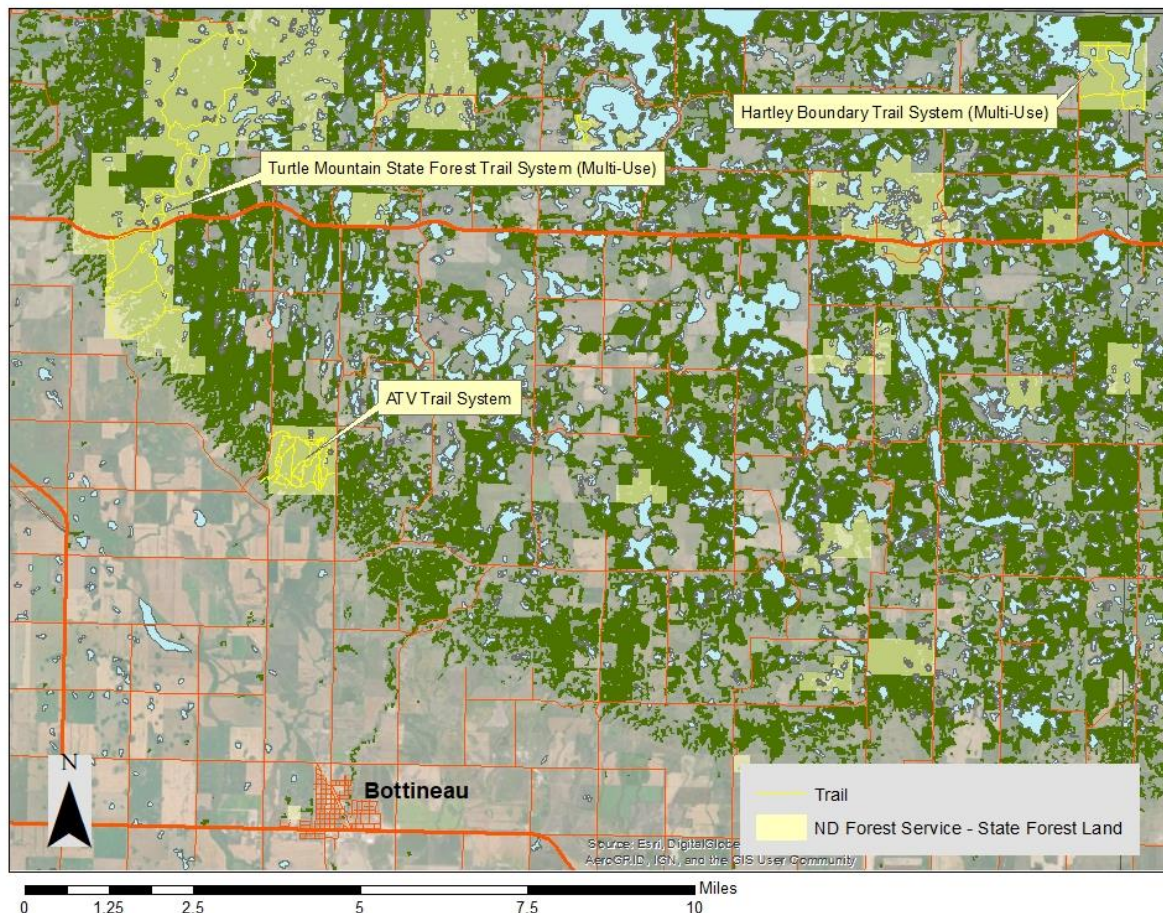
# State Forest Trail Guide

The North Dakota Forest Service maintains 32 miles of multi-use trails and 8 miles of OHV/ATV Trail.

Multi-use trails are open to hiking, biking, and horseback riding. Multi-use trails can be found on the Turtle Mountain State Forest (including trails originating at Strawberry Lake Campground and Twisted Oaks Campground), the Homen State Forest (near Hartley and Boundary Lakes), Tetrault Woods State Forest (Pembina County), and the Sheyenne River State Forest (Ransom County).

ATVs are NOT permitted on Turtle Mountain State Forest multi-use trail. Trails designated for ATVs can be found along Sjure Road 4 miles north of Bottineau.

## NDFS Trail Systems - Turtle Mountains



## **Safety on the trail is everyone's responsibility!**

Multi-use trails require a collective responsibility of all trail users to ensure a safe and enjoyable experience for all. Please consider the following trail etiquette measures when using these trails:

### **The Equestrians Responsibility:**

Riders need to know and respect their own abilities and limitations as well as those of the horse.

Be sure you can control your horse and condition it to other trail recreational uses before riding on multi-use trails.

Stay alert for others and don't assume anyone you meet on the trail knows how horses may react.

### **The Bicyclists Responsibility:**

Bikes are quiet and can easily startle horses. All Bicyclists must slow down on the trail and be prepared to stop should a horse be around the next corner.

When approaching head on: Say Hello to make sure you have been seen, Stop your bike and move off to the side of the trail, and wait for the horse to pass

When Approaching from behind: Stop; call out to the rider and indicate that you would like to pass, and wait for the rider to turn the horse to face you

### **The Hikers Responsibility**

Stay calm and behave normally; don't run or try to hide. If possible step off to the side of the trail.



For Additional Information Contact:  
North Dakota Forest Service  
1037 Forestry Drive  
Bottineau ND 58318  
701.228.3700