

# SOYBEAN – DISEASES



**Phytophthora root rot**  
(Courtesy H.A. Lamey)



**White mold**  
(Courtesy B.D. Nelson)



**Soybean cyst nematode**  
(Courtesy G. Tylka)



**Rhizoctonia root rot**  
(Courtesy B.D. Nelson)



**Fusarium root rot**  
(Courtesy B.D. Nelson)



**Sudden death syndrome**  
(Courtesy B.D. Nelson)

# SOYBEAN – DISEASES



**Bacterial blight**  
(Courtesy L. Prom)



**Septoria brown spot**  
(Courtesy H.A. Lamey)



**Downy mildew**  
(Courtesy B. Nyvall)



**Pod and stem blight**  
(Courtesy USDA)



**Brown stem rot**  
(Courtesy C. Grau)



**Leaf puckering from virus**  
(Courtesy Illinois Agricultural Experiment Station)

# SOYBEAN – DISEASES



**Seed mottling from virus**

*(Courtesy H. J. Johnson)*



**Leaf distortion from virus**

*(Courtesy M.C. Shurtleff)*



**Soybean rust pustules through hand lens**

*(Courtesy S. Markell)*



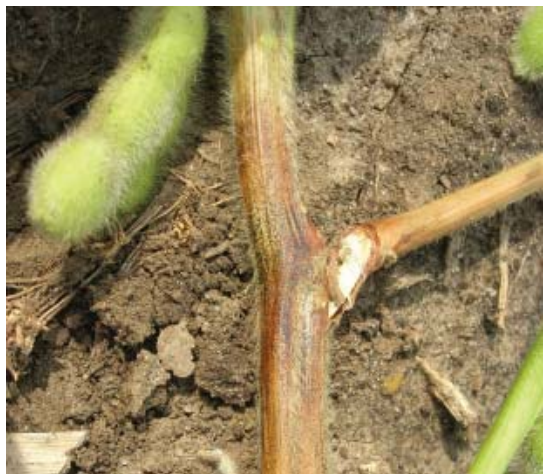
**Soybean rust through hand lens**

*(Courtesy S. Markell)*



**Charcoal rot**

*(Courtesy D. Jardine, Kansas State University)*



**Stem canker**

*(Courtesy D. Malvick)*