

INSECTS



Fig. 52. Winged bean aphids
(H. Schwartz, Colorado State University, Bugwood.org)



Fig. 53. Armyworm larva
(R. Smith, Auburn University, Bugwood.org)



Fig. 54. Armyworm adult
(J. Fauske, NDSU)



Fig. 55. Bean leaf beetle adult
(N. Wright, Florida Department of Agriculture & Consumer Services, Bugwood.org)



Fig. 56. Bean leaf beetle defoliation
(J. Knodel, NDSU)



Fig. 57. Darksided cutworm adult
(G. Fauske, NDSU)

INSECTS



Fig. 58. Dingy cutworm larvae
(J. Gavloski, Manitoba Agriculture,
Food and Rural Initiatives)



Fig. 59. Dingy cutworm adult
(G. Fauske, NDSU)



Fig. 60. Redbacked cutworm larvae
(J. Gavloski, Manitoba Agriculture,
Food and Rural Initiatives)



Fig. 61. Redbacked cutworm adult
(G. Fauske, NDSU)



Fig. 62. Green cloverworm larva
(J. Gavloski, Manitoba Agriculture,
Food and Rural Initiatives)



Fig. 63. Green cloverworm adult
(J. Gavloski, Manitoba Agriculture,
Food and Rural Initiatives)

INSECTS



Fig. 64. Green cloverworm pupae
(J. Gavloski, Manitoba Agriculture, Food and Rural Initiatives)

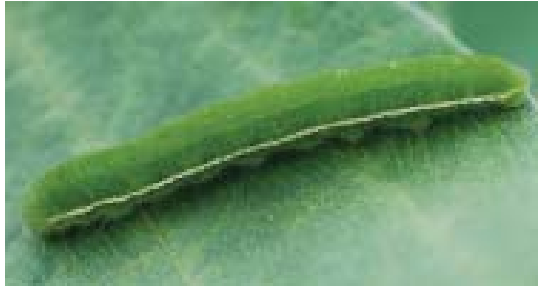


Fig. 65. Velvetbean caterpillar
(J. Knodel, NDSU)



Fig. 66. Painted lady butterfly
(W. Ciesla, Forest Health Management International, Bugwood.org)



Fig. 67. Thistle caterpillar
(J. Knodel, NDSU)



Fig. 68. Alfalfa webworm larva
(J. Knodel, NDSU)



Fig. 69. Alfalfa webworm adult
(W. Cranshaw, Colorado State University, Bugwood.org)

INSECTS



Fig. 70. Red-legged grasshopper adult

(J. Knodel, NDSU)



Fig. 71. Grasshopper nymph

(G. Fauske, NDSU)



Fig. 72. Potato leafhopper nymph

(J. Knodel, NDSU)



Fig. 73. Potato leafhopper adult

(S. Brown, University of Georgia, Bugwood.org)



Fig. 74. Seedcorn maggot larva

(W. Cranshaw, Colorado State University, Bugwood.org)



Fig. 75. Seedcorn maggot adult

(Pest and Diseases Image Library, Bugwood.org)

INSECTS

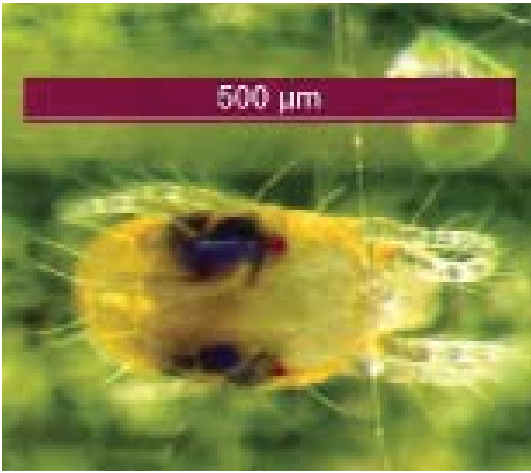


Fig. 76. Close-up of two-spotted spider mite

(P. Beauzay, NDSU)



Fig. 77. Two-spotted spider mite stippling injury on leaves

(J. Knodel, NDSU)



Fig. 78. Webbing from two-spotted spider mites

(D. Cappaert, Michigan State University, Bugwood.org)



Fig. 79. Click beetles (adult wireworm)

(S. Brown, University of Georgia, Bugwood.org)



Fig. 80. Wireworm

(M. Boetel, NDSU)