

DISEASES



Fig. 34. Anthracnose underside of leaf
(*S. Markell, NDSU*)

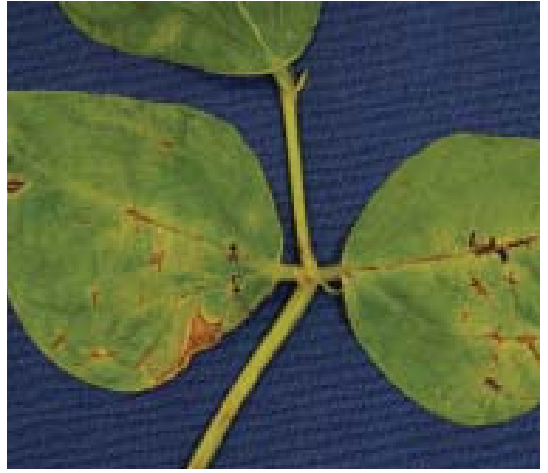


Fig. 35. Anthracnose upper leaf
(*S. Markell, NDSU*)



Fig. 36. Anthracnose on pod
(*S. Markell, NDSU*)



Fig. 37. Anthracnose on bean
(*S. Markell, NDSU*)



Fig. 38. Rust hot spot
(*S. Markell, NDSU*)



Fig. 39. Rust close up
(*S. Markell, NDSU*)

DISEASES



Fig. 40. Rust under side of leaf
(*S. Markell, NDSU*)



Fig. 41. Rust upper side of leaf
(*S. Markell, NDSU*)



Fig. 42. Sclerotia (sclerotinia) on bean stem
(*S. Markell, NDSU*)



Fig. 43. Sclerotia (sclerotinia) in pod
(*S. Markell, NDSU*)



Fig. 44. Sclerotinia Apothecia
(*M. Wunsch, NDSU*)



Fig. 45. Sclerotinia Apothecia
(*M. Wunsch, NDSU*)

DISEASES



Fig. 46. Field with Sclerotinia
(M. Wunsch, NDSU)



Fig. 47. Sclerotinia on pod
(M. Wunsch, NDSU)



Fig. 48. Sclerotinia on stem
(M. Wunsch, NDSU)

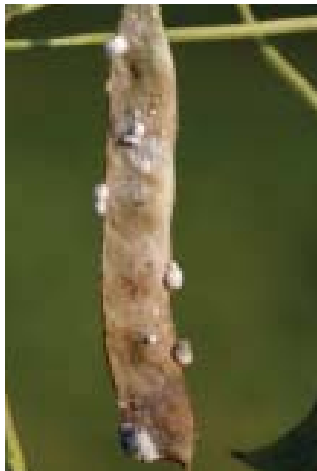


Fig. 49. Sclerotinia whole pod infected
(M. Wunsch, NDSU)



Fig. 50. Sclerotinia on stem
(M. Wunsch, NDSU)



Fig. 51. Sclerotinia on pods
(M. Wunsch, NDSU)