

## CANOLA – INSECTS



**Adult crucifer flea beetle,  
*Phyllotreta cruciferae* (Goeze).**

(G. Fauske, NDSU)



**Adult striped flea beetle,  
*Phyllotreta striolata* (Fabricius).**

(G. Fauske, NDSU)



**Larvae of diamondback moth.**

(Courtesy C. Gorsuch, Clemson University,  
U.S. Department of Agriculture Cooperative  
Extension Slide Set Series)



**Adult diamondback moth,  
*Plutella xylostella* (Linnaeus).**

(G. Fauske, NDSU)



**Damaged canola seedling caused  
by flea beetle feeding injury (top)  
and undamaged seedling (bottom).**

(J. Knodel, NDSU)



**Damage from diamondback  
moth larvae (aborted flowers).**

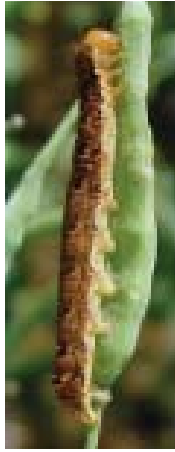
(J. Knodel, NDSU)

# CANOLA – INSECTS



**Adult bertha armyworm, *Mamestra configurata* (Walker).**

(G. Fauske, NDSU)



**Black and green phase of larvae of bertha armyworm.**

(J. Knodel, NDSU)



**Damage caused to pods from feeding by larvae of bertha armyworm.**

(J. Knodel, NDSU)



**Adult tarnished plant bug, *Lygus lineolaris* (Palisot de Beauvois).**

(Courtesy S. Bauer, Agricultural Research Service, U.S. Department of Agriculture)



**Nymph of tarnished plant bug, *Lygus lineolaris* (Palisot de Beauvois).**

(Courtesy S. Bauer, Agricultural Research Service, U.S. Department of Agriculture)



**Adult red-backed cutworm, *Euxoa ochrogaster* (Guenee) typical form.**

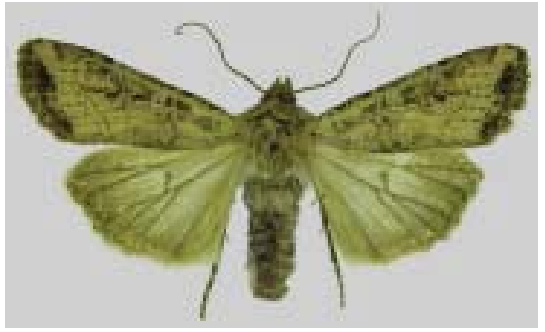
(G. Fauske, NDSU)

## CANOLA – INSECTS



**Adult red-backed cutworm, *Euxoa ochrogaster* (Guenee), dark form.**

(G. Fauske, NDSU)



**Adult red-backed cut-worm, *Euxoa ochrogaster* (Guenee), pale form.**

(G. Fauske, NDSU)



**Larvae of red-backed cutworm.**

(J. Knodel, NDSU)



**Adult two-striped grasshopper, *Melanoplus bitvittatus* (Say).**

(J. Knodel, NDSU)



**Adult Nuttall blister beetle, *Lytta nuttalli* (Say).**

(J. Knodel, NDSU)



**Cluster of turnip aphids, *Lipaphis erysimi* (Kaltenbach) on canola terminal.**

(J. Knodel, NDSU)