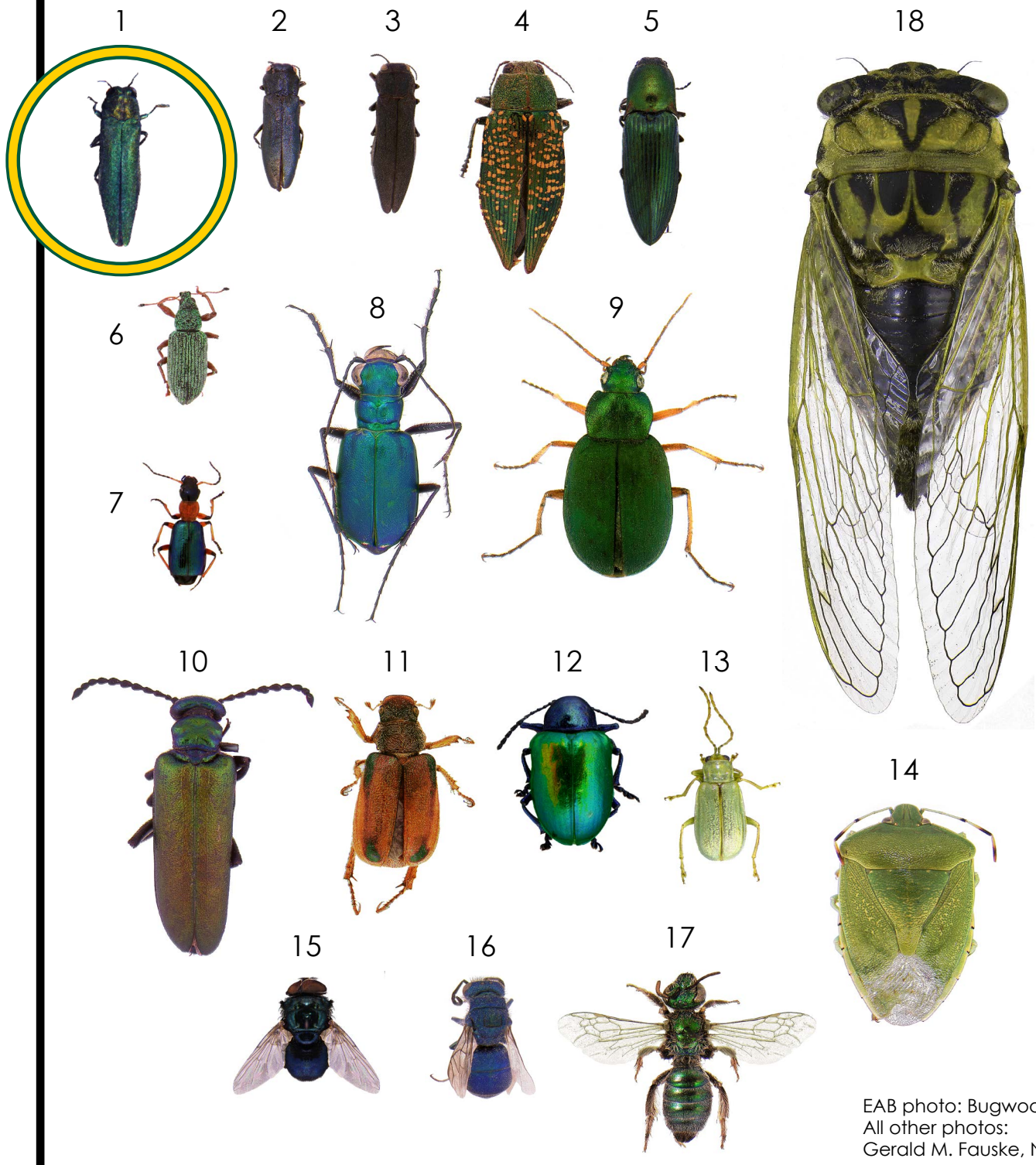


Insects Frequently Confused with **Emerald Ash Borer** in North Dakota



EAB photo: Bugwood.org
All other photos:
Gerald M. Fauske, NDSU

Emerald Ash Borer

The Emerald ash borer is a beetle (Order Coleoptera). Beetles are recognized by having shell-like front wings called elytra. When the wings are folded, they meet forming a median line down the back. Currently, Emerald ash borer has not been found in North Dakota.

Metallic wood-boring beetles

(Family Buprestidae)

Compact beetles with short legs and "saw-toothed" antennae

1. **Emerald ash borer, *Agilus planipennis* Fairmaire**
2. Honeysuckle borer, *Agilus cyanescens* Ratzeburg
3. Bronze birch borer, *Agilus anxius* Gory
4. Green metallic woodborer, *Buprestis confluenta* Say

Click beetles (Family Elateridae)

Beetles with a flexible joint between thorax and abdomen

5. Green click beetle, *Ctenicera* species

Weevils (Family Curculionidae)

Beetles with a "snout" and elbowed antennae

6. Green Polydrusus weevil, *Polydrusus* species

Ground beetles (Family Carabidae)

Long-legged, agile beetles with long antennae

7. *Calleida* beetle, *Calleida* species
8. Six-spotted tiger beetle, *Cicindela sexguttata* Fabricius
9. Green pubescent ground beetle, *Chlaenius sericeus* Forster

Blister beetles (Family Meloidae)

Soft-winged beetles with head narrowed behind eyes

10. Nuttall blister beetle, *Lytta nuttalli* Say

Scarab beetles (Family Scarabaeidae)

Beetles with lopsided antennal club and flattened front legs

11. Green-marked chafer, *Dolichonyx subvittatus* Capiomont

Leaf beetles (Family Chrysomelidae)

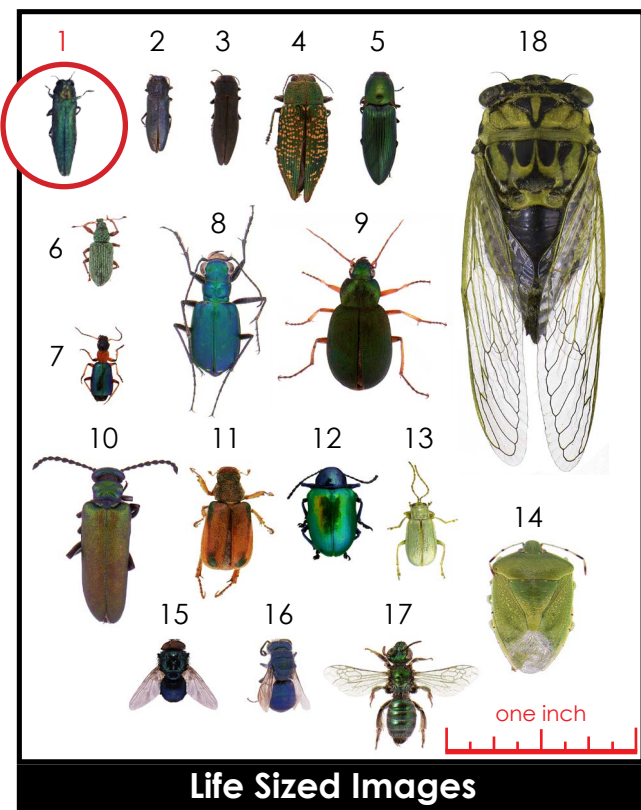
Oval beetles with long antennae

12. Dogbane beetle, *Chrysochus auratus* (Fabricius)
13. Northern corn rootworm beetle, *Diabrotica barberi* Smith & Lawrence

Other Insects

Front wings at least partially membranous

14. Green stink bug (Hemiptera: Pentatomidae)
15. Blow fly (Diptera: Calliphoridae)
16. Cuckoo wasp (Hymenoptera: Chrysididae)
17. Sweat bee (Hymenoptera: Halictidae)
18. Annual cicada (Hemiptera: Cicadidae)



Printing is being supported by the Great Plains Diagnostic Network grant from a subcontract under the USDA-NIFA.

NDSU encourages you to use and share this content, but please do so under the conditions of our Creative Commons license. You may copy, distribute, transmit and adapt this work as long as you give full attribution, don't use the work for commercial purposes and share your resulting work similarly. For more information, visit www.ag.ndsu.edu/agcomm/creative-commons.

For more information on this and other topics, see www.ag.ndsu.edu

County commissions, North Dakota State University and U.S. Department of Agriculture cooperating. NDSU does not discriminate in its programs and activities on the basis of age, color, gender expression/identity, genetic information, marital status, national origin, participation in lawful off-campus activity, physical or mental disability, pregnancy, public assistance status, race, religion, sex, sexual orientation, spousal relationship to current employee, or veteran status, as applicable. Direct inquiries to Vice Provost for Title IX/ADA Coordinator, Old Main 201, NDSU Main Campus, 701-231-7708, ndsu.eoaa@ndsu.edu. This publication will be made available in alternative formats for people with disabilities upon request, 701-231-7881.