

Rust Diseases of Wheat in North Dakota

Revised by
Sarah Budde-Rodriguez, Post-doctoral Research Fellow
Andrew Friskop, Extension Plant Pathologist
Upinder Gill, Rust Pathologist

wheat leaf rust



Figure 1. Leaf rust. (Andrew Friskop, NDSU)

Three rust fungi have the potential to infect wheat and cause economic damage in North Dakota. Wheat leaf rust is the most common rust disease observed. Stem rust historically caused severe losses, but resistant varieties have made this disease rare in recent decades. Stripe rust is observed when relatively cool springs and summers occur.

Wheat Leaf Rust

Wheat leaf rust, caused by the fungus *Puccinia triticina* (formerly *recondita* f. sp. *tritici*), reduces wheat yields in susceptible varieties when weather conditions favor rust development and spread. The most characteristic signs of the leaf rust pathogen are rusty-red spores found in round to oval pustules breaking through the leaf surface (Figure 1). These spore masses are detected first on wheat in North Dakota in late May or early June, generally in the southern-most counties, and on lower leaves where higher humidity and longer dew periods occur.

Disease cycle: Leaf rust develops early in the spring on wheat grown in the southern U.S. Spores are carried by wind currents northward across the Great Plains as the wheat crops develop (Figure 2).

Leaf rust epidemics occur when the following factors are present: presence of viable spores, susceptible or moderately susceptible varieties are grown, periods of prolonged moisture (dews) and favorable temperatures

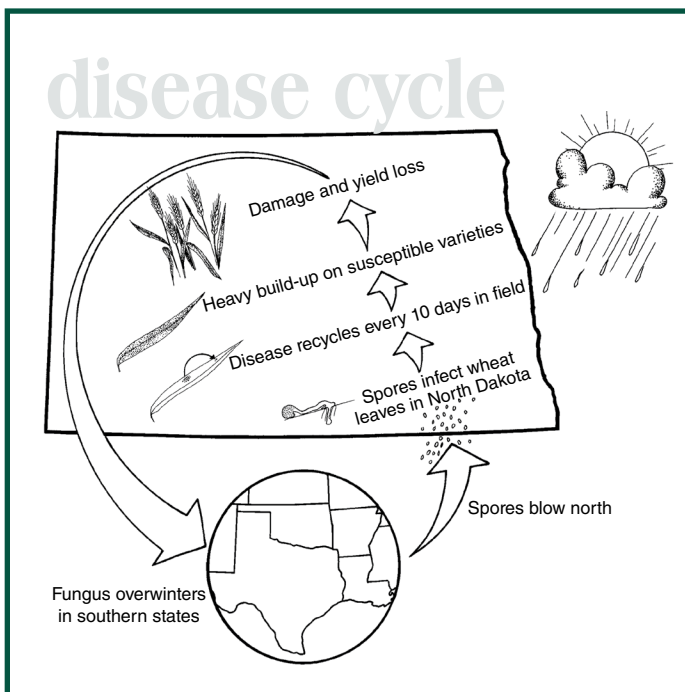


Figure 2. Leaf rust disease cycle. (NDSU graphic)

NDSU

EXTENSION

North Dakota State University, Fargo, North Dakota

ranging from 60 to 80 F. Relatively cool nights combined with warm days are optimum conditions for leaf rust development.

Under favorable environmental conditions, spores will germinate and penetrate into the leaf. Within a week to 10 days, new pustules will erupt through the leaf surface, housing thousands of fungal spores per pustule. These newly produced spores are wind-blown to other wheat leaves or fields. The asexual (spore to spore) cycle may continue roughly every 10 days under favorable environmental conditions, and by the end of the season, severe infection may result in reduced yields and lower test weights.

Yield loss and reduction of test weight are related to disease severity and time of infection. Yield losses of 30% to 40% have been recorded when severe infection occurred before flowering and damage on the flag leaf was high (greater than 60% to 100%, see Figure 3). However, if severe leaf rust does not occur until the dough stages of kernel development, yield losses will not be as high.

Control Resistance

Host resistance is an excellent means of controlling leaf rust. Resistance limits infection, fungal growth and spore formation.

Resistance levels vary among varieties and are classified accordingly: R = resistant, MR = moderately resistant, MS = moderately susceptible and S = susceptible. In resistant varieties, infection is slowed or stopped and yellowish-white “flecks” may develop at the site of spore penetration.

reaction types

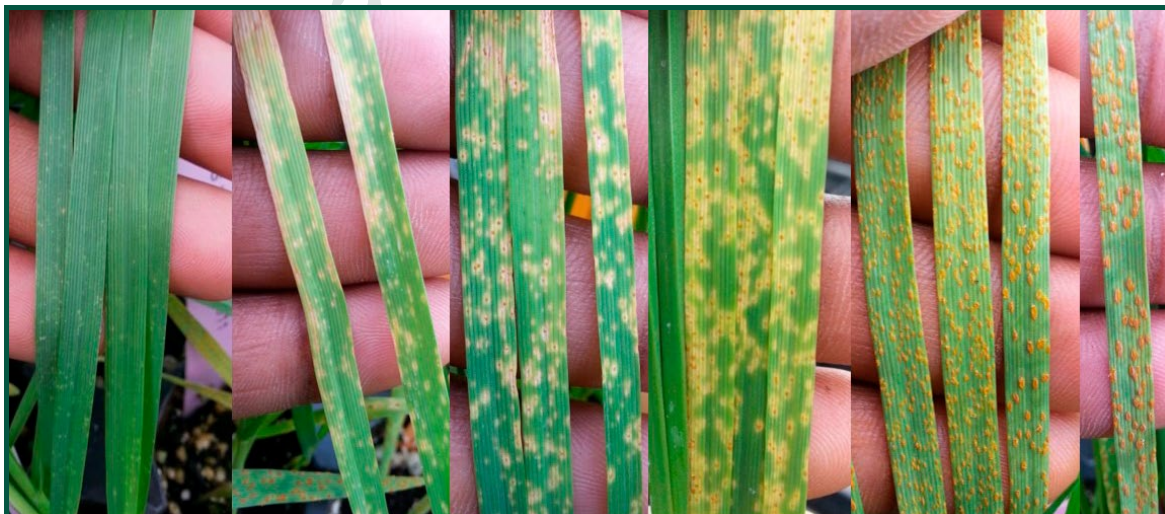


Figure 4. Wheat leaf rust reaction types, with resistant reaction on the far left and most susceptible reaction on the far right.

(Matt Breiland, NDSU)

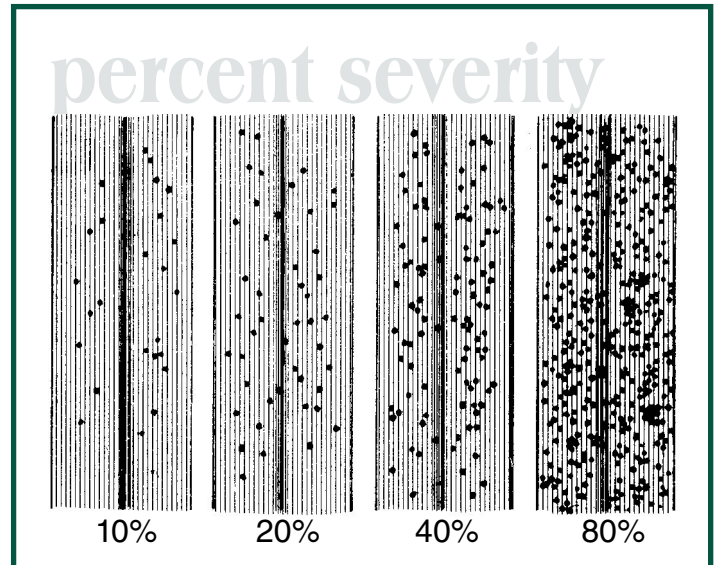


Figure 3. Percent severity. (NDSU graphic)

Moderately resistant varieties develop yellowish-white spots with a small amount of spore production in the center (Figure 4). Moderately susceptible varieties develop small reddish-orange pustules surrounded by a yellow-white halo.

Susceptible varieties do not have the ability to retard fungal growth; the fungus grows extensively and produces relatively large pustules that may produce about 1,000 spores daily, each one of which is capable of re-infecting wheat. Therefore, the lack of host resistance in varieties can lead to rapid disease spread under favorable environmental conditions, and epidemics may occur.

The population of the leaf rust fungus is genetically diverse and made up of many races. Different races have the ability to cause infection on varieties with different resistance genes.

Stem Rust

Cause and signs of disease: Stem rust is caused by the fungus *Puccinia graminis* f. sp. *tritici*. The most characteristic signs of the stem rust pathogen are irregular-shaped pustules filled with dark red-brown spores erupting through the plant tissue.

Although pustules are found primarily on stems and leaf sheaths, the leaves, glumes and awns also may be infected. Pustules are generally elongated and have jagged edges on the wheat stem (Figure 5). Stem rust can result in severe lodging and reduced yields and test weights.

Disease cycle: The alternate host of stem rust is the common barberry, a plant in which the fungus may overwinter and go through sexual recombination. Common barberry plants were eradicated in the spring wheat region in the 1950s to reduce the chance of this fungus overwintering and undergoing rapid genetic changes. Consequently, infection in North Dakota usually is caused by spores blown into our region from states to our south, similar to leaf rust as seen in Figure 4.

The stem rust fungus infects at warmer temperatures than leaf rust, with an optimum temperature for development near 80 F, and development stopping at temperatures above 100 F. These temperatures often coincide with the later stages of maturity of wheat in North Dakota, resulting in a late-season appearance.

stem rust



Figure 5.
Stem rust.
(Andrew Friskop,
NDSU)

The leaf rust pathogen is dynamic, and races are constantly changing. Varieties formerly considered resistant can become susceptible if new rust races arise. Resistant levels are updated each year for varieties. Consult the NDSU Extension publications A574, “North Dakota Hard Red Spring Wheat Variety Trial Results and Selection Guide,” and A1196, “North Dakota Hard Red Winter Wheat Variety Trial Results and Selection Guide,” for current rust resistance ratings of public and private varieties.

Generally, durum varieties are considered resistant because of their “slow rusting” reaction. Consult NDSU Extension publication A1067, “North Dakota Durum Wheat Variety Trial Results and Selection Guide,” for specific durum variety responses to leaf rust. The disease score in these publications is given on 1-9 scale, with 1 = resistant and 9 = susceptible.

Fungicides

Fungicides are effective in managing wheat leaf rust when applied prior to infection. Fungicides belonging to FRAC groups 3 (triazoles) and 11 (strobilurins) are most effective in reducing rust levels. Fungicides often are re-evaluated for registered uses, and some new fungicides may become available. Consult the fungicide recommendations given in the most current NDSU Extension publication PP622, “North Dakota Field Crop Plant Disease Management Guide.”

In North Dakota, the greatest response to leaf rust control in spring wheat generally has been when fungicides are applied to the flag leaf at full head emergence or early flowering (Feekes 10.5-10.51) growth stages, when the flag leaf is fully extended. Application at the flag leaf stage is generally recommended in North Dakota when rust is detected prior to flag leaf to heading. No matter what growth stage of application, if more than 5% of the flag leaf is covered with leaf rust, you may be too late to spray because many spores already have established infections that will not be visible for seven to 10 days.

Good coverage is essential for control; 10 to 15 gallons of water per acre is recommended for ground application, while 5 gallons of water per acre is recommended for aerial application. Individual labels may have slightly different requirements, so consult the label of the individual fungicide product for appropriate application timing, registered rates, preharvest intervals and restrictions against grazing or using straw for bedding.

Information on the risk of leaf rust development may be found at the following disease forecasting website: www.ag.ndsu.edu/cropdisease. Disease risk information is provided based on weather data from North Dakota Agricultural Weather Network (NDAWN) locations.

Stripe Rust

Cause and signs of disease: This disease is caused by the fungus *Puccinia striiformis* f. sp. *tritici*. The infection is characterized by yellow-orange spores that form in parallel lines on the leaf surface (Figures 6 and 7). The oval, darker-colored pustules of leaf rust are easily distinguished from the infections of stripe rust on a single leaf (Figure 6).

Disease cycle: Historically, stripe rust epidemics have been rare in North Dakota, but incidence of the disease has increased since 2011. Like the previous two wheat rust pathogens, wind-borne spores are carried into North Dakota from southerly states.

Of the three rust fungi, the stripe rust fungus has the lowest optimal temperature for growth (50 to 60 F). Cool, wet conditions favor rust development and temperatures in North Dakota usually become too warm in July for any rapid development of this disease. However, stripe rust pathogen populations adapted to warmer climate have been reported in North Dakota.

North Dakota hard red wheat varieties vary in susceptibility to stripe rust. Therefore, make sure to know the level of resistance in hard red spring wheat and hard red winter wheat for in-season management considerations. The fungicide chemistries that are effective for wheat leaf rust are effective for managing stripe rust. Similar to wheat leaf rust, fungicides should be applied in a manner to protect the flag leaf.

stripe rust



Figure 7. Stripe rust on susceptible hard red spring wheat variety. (Andrew Friskop, NDSU)

Most spring wheat and durum wheat varieties currently grown in North Dakota are resistant to the races of stem rust prevalent in the U.S. A few winter wheat cultivars are susceptible to prevalent races.

A highly virulent race group of the stem rust pathogen was identified in East Africa (originally referred to as race Ug99). The Ug99 race group continues to evolve to generate new highly virulent races and most available spring wheat varieties are susceptible to these new races, which will pose a threat to our wheat crops if the virulent races arrive in the U.S.

The U.S. Department of Agriculture's Cereal Disease Laboratory in St. Paul, Minn., and other agencies are monitoring movement of Ug99 and screening wheat varieties and new germplasm for resistance. Resistance is the primary means of control for stem rust.

stripe rust and leaf rust

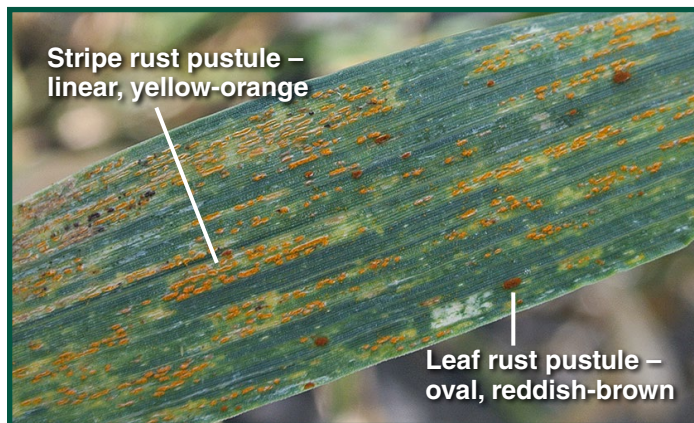


Figure 6. Stripe rust and leaf rust on wheat leaf. (Andrew Friskop, NDSU)

This publication was authored by Marcia McMullen, former plant pathologist; Samuel Markell, plant pathologist; and Jack Rasmussen, plant pathologist, NDSU.

NDSU Extension does not endorse commercial products or companies even though reference may be made to tradenames, trademarks or service names. NDSU encourages you to use and share this content, but please do so under the conditions of our Creative Commons license. You may copy, distribute, transmit and adapt this work as long as you give full attribution, don't use the work for commercial purposes and share your resulting work similarly. For more information, visit www.ag.ndsu.edu/agcomm/creative-commons.

For more information on this and other topics, see www.ndsu.edu/extension

County commissions, North Dakota State University and U.S. Department of Agriculture cooperating. NDSU does not discriminate in its programs and activities on the basis of age, color, gender expression/identity, genetic information, marital status, national origin, participation in lawful off-campus activity, physical or mental disability, pregnancy, public assistance status, race, religion, sex, sexual orientation, spousal relationship to current employee, or veteran status, as applicable. Direct inquiries to Vice Provost for Title IX/ADA Coordinator, Old Main 201, NDSU Main Campus, 701-231-7708, ndsu.eoaa@ndsu.edu. This publication will be made available in alternative formats for people with disabilities upon request, 701-231-7881.