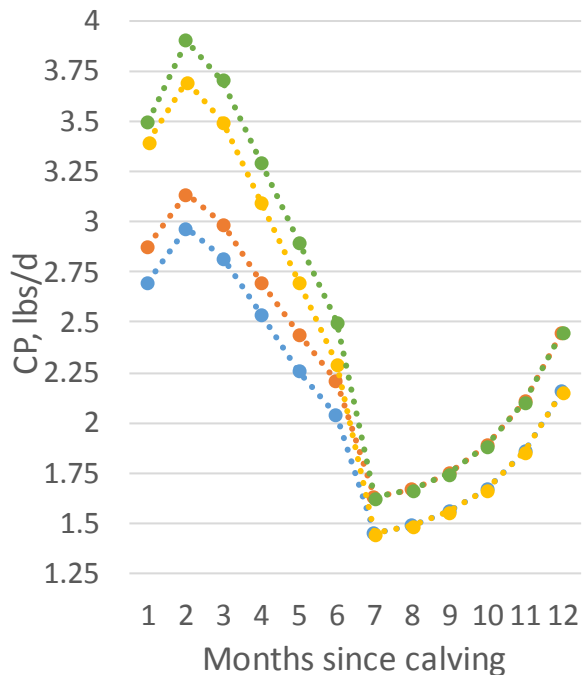
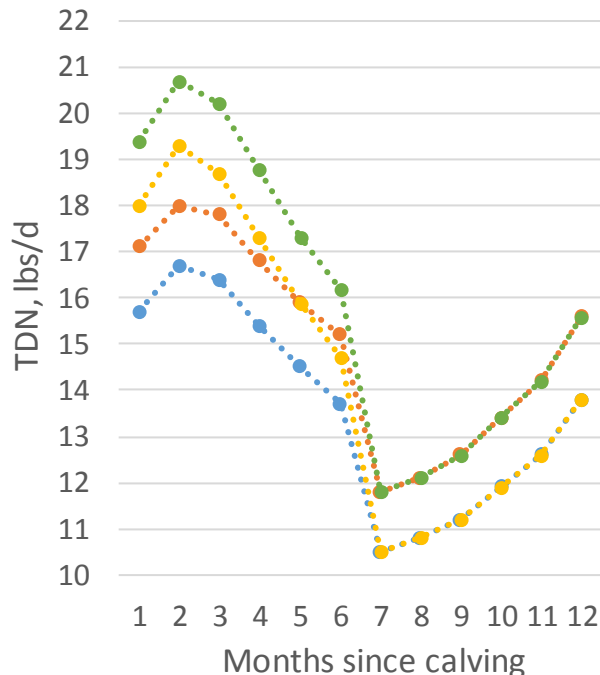


# Protein and Energy Requirements of Beef Cows Throughout the Production Cycle



- 1200 lb. cow @ 20 lbs. peak milk
- 1400 lb. cow @ 20 lbs. peak milk
- 1200 lb. cow @ 30 lbs. peak milk
- 1400 lb. cow @ 30 lbs. peak milk



- 1200 lb. cow @ 20 lbs. peak milk
- 1400 lb. cow @ 20 lbs. peak milk
- 1200 lb. cow @ 30 lbs. peak milk
- 1400 lb. cow @ 30 lbs. peak milk