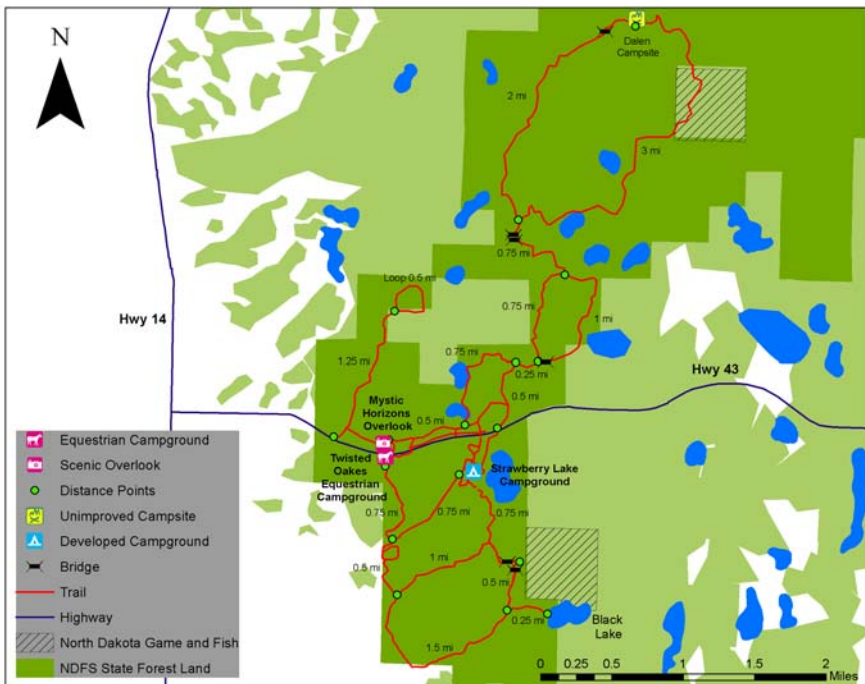


# Turtle Mountain State Forest

The Turtle Mountain State Forest consists of 7,814 acres of woodlands, wetlands and grassland.

Common trees and shrubs include aspen, balsam poplar, bur oak, green ash and paper birch.

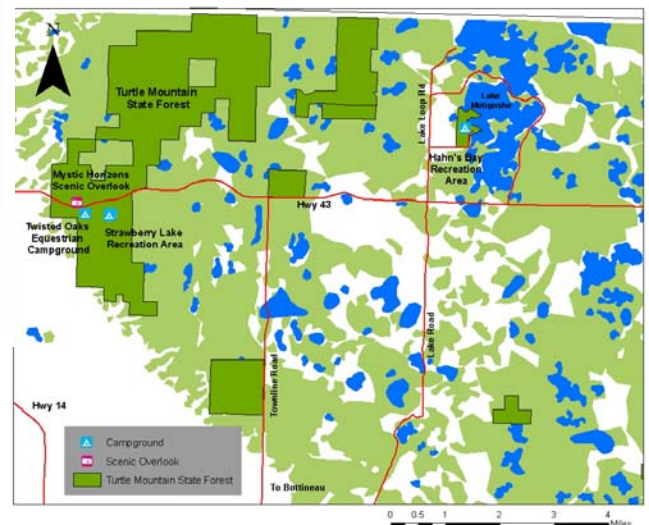
The forest also has many species of fruit and nut-producing shrubs, such as chokecherry, pin cherry, juneberry, plum and hazelnut.



## Trails

The Turtle Mountain State Forest has 18 miles of maintained, multiuse trails.

Trails are open to hiking, horseback riding, bicycling, cross-country skiing and snow-shoeing. Snowmobiles are allowed when the area has more than 4 inches of snow.

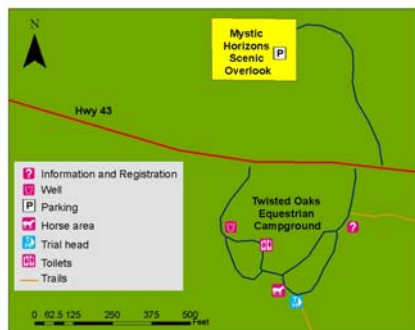


## Camping

Campgrounds are open from Memorial Day through Labor Day. The Turtle Mountain State Forest has three developed campgrounds on and one undeveloped one.

### Twisted Oaks Equestrian Campground

This campground is designated for camping with horses. Amenities include corrals, water tank for horses, a well for drinking water, campsites, fire rings, vault toilets, self-registration system and trailhead with a trail map. Groups larger than 10 people are encouraged to call the Bottineau Field Office at (701) 228-3700 to avoid conflicts with other campers.



### Strawberry Lake Recreation Area

The campground has a self-registration system, campsites, two wells for drinking water, swimming beach, boat ramp, fishing pier, group camping area, picnic area and vault toilet facilities. Strawberry Lake is stocked with rainbow trout annually. Gas-powered boat motors are prohibited on the lake.



### Dalen Campsite

The Dalen campsite is an unimproved area where trail users can access the trail system or simply use it as a rest stop. No services available; however, the site has an outhouse, fire ring and warming shelter. People using this area should pack out what they pack in.

## Points of Interest

### Mystic Horizons

This unique site offers expansive views of surrounding prairie. Mystic Horizons features a sundial, structures to view the spring and fall equinox and summer and winter solstices, and a north star sighting tube. This site is managed by Bottineau County.

### Hahn's Bay Recreation Area

This area provides primitive camping, fishing and boat access to Lake Metigoshe and a picnic shelter. The area has a number of short hiking trails around the campground and access to the Lake Metigoshe paved biking trail.

