

Grow Your Own Coffeetree

Are you looking for a special tree? Look no farther than the Kentucky coffeetree:

It's beautiful all year. Kentucky coffeetree has a picturesque form with arching branches. In fall, the leaves change to bright yellow. Its flaky bark is a nice feature in winter (*see photos*).

It's tough. Kentucky coffeetree prefers moist sites but tolerates the dry and alkaline soils of North Dakota. It tolerates salt too. Kentucky coffeetree has no major pest worries and is hardy to Zone 4.

It looks unique. The leaves of Kentucky coffeetree are bluish green and absolutely massive. Each leaf can grow 3 feet long and 2 feet wide, consisting of over 40 leaflets. Wow!

It's one of the first trees to shed its leaves in fall and one of the latest trees to leaf out in spring. Maybe that's why it's nicknamed the *Dead Tree*. It looks dead half the time.

It saves energy. Its branches have very few twigs. Sunlight pours through the open canopy in winter, helping to reduce our heating bills.

It's rare. It's not widely grown by nurseries because it grows a tap root when young and is difficult to transplant. Get a young tree, preferably 10 feet or shorter, and the tap root will not be an issue.

It's filled with folklore. You can share lots of stories with your neighbors about your special tree. It's



Kentucky coffeetree is an attractive shade tree with giant leaves (the yellow foliage in the foreground of the top photo is a single leaf) and attractive bark.

called Kentucky coffeetree because settlers in Kentucky used to roast and grind the tree's seeds to make a coffee substitute. The homemade brew tasted terrible; not to mention the unroasted seeds were poisonous. It's no wonder they abandoned this "coffee" as soon as they gained access to seaports and genuine coffee.

It's a prehistoric tree! Archaeologists believe mastodons and mammoths gnawed on the leathery pods, spreading the seeds.

Everyone knows that George Washington grew (and chopped down) a cherry tree, but did you know he

grew Kentucky coffeetrees along the path leading up to his home at Mount Vernon? You can be just like George!

To avoid the toxic, messy pods in your yard, look for a male cultivar such as True North™, Espresso™ or Stately Manor™. Generic Kentucky coffeetrees are available but some will be female and produce pods.

Inside This Issue

- ◆ Kentucky Coffeetree 1
- ◆ Plant Health Care
 - ◆ Vegetables and Fruits 2
 - ◆ Trees and Shrubs, Lawns 3
- ◆ Weather Almanac 4

Plant Health Care

Fruits and Vegetables



Cold-Hardy Kale

Snow is falling in North Dakota and gardeners are scrambling to harvest their tomatoes and other tender veggies. There are no worries about kale. It can tolerate temps in the low 20s. The frost actually enhances its flavor. Let it snow!



Harvesting Apples

The background color of a ripe apple's skin begins to turn from green to yellow. Use an upward, twisting motion when harvesting; a ripe fruit will come off easily. Apples tolerate temps down to 25°F before suffering frost damage.



Storing Winter Squash

Leave at least one inch of stem attached. Wipe but don't wash fruit. Except for acorns, cure in a warm (80°F) spot for 10 days to toughen skin. Store on pallets at 55°F and 60% RH.



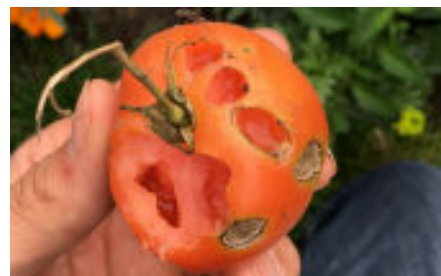
Planting Garlic

Hardneck cultivars are most hardy. Add 1 inch of compost or peat moss and 2.5 lbs of 10-10-10 per 100 ft². Set cloves 2-3 inches deep; space 4-6 inches in rows 12-24 inches apart. Mulch with straw in November.



Green Pumpkins

Blushing fruits will turn orange if exposed to sunlight and warmth. Place on a sunny deck or indoors near a sunny window; green side toward the sun. Keep indoors during hard frosts.



Slugs

Apply iron phosphate baits (Sluggo, Escar-Gol!); they are non-toxic to people or pets. Slugs will try to overwinter. Remove any leaf litter, weeds and garden debris around plants. Tilling will crush slugs and their eggs.



Storing Apples

Store in a cool (near 32°F), humid (90% RH), dark place. A refrigerator is best, but a cool root cellar or garage is okay. If refrigerated, store in perforated plastic bags to increase humidity.



Harvest, Store Potatoes

Don't let tubers freeze in soil (temps get into teens). Use a spading fork. Remove loose soil. Cure tubers for 2-3 weeks in darkness at 60°F. Brush off dried soil; do not wash. Store in a cold (high 30s), moist (95% RH) and dark location.

Plant Health Care

Trees and Shrubs



Golden Larches

The showiest “evergreen” in fall isn’t green at all. Larch needles turn bright gold before falling to the ground. The tree looks barren over winter and sprouts new green needles every spring.



Protect Young Trees

Use white tree guards for at least two winters to prevent cracking (*right photo*) and protect against wildlife. Linden, mountainash, maple and fruit trees are very sensitive; protect for five winters.



Toxic Nuts

Raw buckeye nuts are highly toxic to people, dogs and livestock. Symptoms include paralysis, vomiting and diarrhea. Raw acorns are toxic, too. Squirrels seem to tolerate these toxins.



Hedge Apple Hoax?

Osage orange fruits are sold in fall to repel insects from entering homes and basements. Although chemicals in the fruits may repel some insects, their concentration in the fruit is so low that in open spaces the effects are negligible.



Mulch Trees

Spray glyphosate to kill turf. Cover with mulch. Use 3–3–3 rule: place in a ring at least 3 feet wide, 3 inches deep and 3 inches away from trunk. Mulch will conserve moisture, insulate roots over winter, and prevent premature bud sprouting in spring.

Lawns



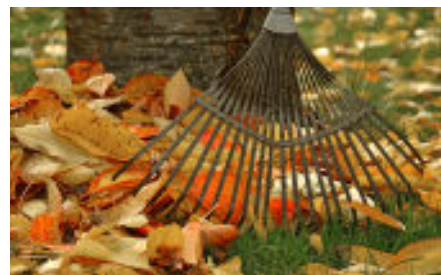
Killing Weeds After Frost

Weeds can be sprayed after a frost if the leaves appear not to be damaged. Weeds must be active for the herbicide to move into the roots. Broadleaf herbicides with dicamba are effective.



Seeding and Sodding

Do not sow grass seed; the seedlings will not have enough time to get established. Wait until November; this seed will germinate next spring. Sod can be laid until the ground freezes.



Raking Leaves

Shred leaves with your mulching mower. The lawn will not suffocate from the mulched leaves as long as you can see the grass blades after mowing. Thick layers of leaves must be raked.

Weather Almanac for October 1-7, 2019

Site	AVG FROST DATE ^{1,2}		TEMPERATURE ²				RAINFALL ^{2,4}				GROWING DEGREE DAYS ^{2,5}			
	Light	Killing	Oct 1-7				Oct 1-7		2019		Oct 1-7		2019	
	(32°F)	(28°F)	Avg	Norm	Max	Min	Total	Norm	Total	Norm	Total	Norm	Total	Norm
Bottineau	9/21	09/27	44	48	69	30	0.80	0.30	17.80	13.53	19	33	1909	2112
Bowman	9/18	09/30	43	49	68	30	1.23	0.36	16.72	11.66	22	38	1947	2205
Carrington	9/26	10/05	44	50	67	32	0.90	0.43	21.26	15.74	14	39	2001	2281
Crosby	9/22	09/29	42	46	66	28	0.29	0.29	18.45	11.83	17	30	1859	1963
Dickinson	9/22	10/03	43	48	68	30	1.17	0.33	19.95	13.22	18	40	2027	2190
Fargo	9/27	10/05	48	51	67	37	1.53	0.58	21.01	16.57	17	38	2377	2431
Grafton	9/24	10/04	45	49	67	33	1.52	0.50	14.34	16.16	14	34	2084	2130
Grand Forks	9/20	10/05	46	49	66	37	1.27	0.51	24.48	15.76	13	33	2062	2176
Hazen	9/14	09/27 ⁶	45	51	70	32	1.09	0.34	22.26	13.37	19	48	2018	2414
Hillsboro	9/28	10/06	46	50	67	37	1.08	0.58	23.01	16.26	15	34	2148	2293
Jamestown	9/25	10/04	44	49	65	32	1.19	0.46	21.38	15.41	14	34	1973	2252
Langdon	9/17	09/28	42	46	64	32	0.63	0.41	16.03	15.60	10	24	1765	1811
Mandan	9/23	10/01	45	50	68	32	0.70	0.35	19.72	14.42	19	38	2099	2272
Minot	9/28	10/07	44	48	68	31	0.91	0.35	18.40	13.66	18	29	1961	2063
Mott	9/18	09/28	43	49	69	28	0.90	0.38	21.67	12.49	20	42	2001	2288
Rugby	9/21	10/04	44	48	67	32	0.74	0.33	13.91	15.25	16	34	1966	2109
Wahpeton	9/27	10/04 ⁷	47	53	67	37	0.98	0.68	21.86	17.43	16	40	2271	2542
Watford City	9/14	09/25	43	49	68	31	0.49	0.24	16.60	11.30	18	39	2048	2198
Williston	9/22	09/29	44	52	67	31	0.62	0.26	20.00	11.29	18	46	2069	2483
Wishek	9/18	09/27	42	49	64	31	1.12	0.41	22.76	13.13	13	33	1910	2073

DAYLENGTH (Oct 8, McClusky, center of ND)³

Sunrise: 7:49 AM Daylength: 11h 20m
 Sunset: 7:10 PM Change since Oct 1: -24m

LONG-TERM OUTLOOKS¹

Oct 13-17: Temp.: Below Normal; Precip.: Normal
 Oct 15-21: Temp.: Below Normal; Precip.: Normal

^{1,2,3}Sources: National Oceanic and Atmospheric Administration, North Dakota Agricultural Weather Network, www.sunrisesunset.com, respectively.

⁴Measurements begin April 1.

⁵GDDs for garden vegetables are not available. GDD data in this table are for corn, which responds to temperature as most vegetables grown in gardens. Data begin May 1 with base minimum and maximum temperatures of 50 and 86°F, respectively.

^{6,7}Frost data for Beulah and Campbell, respectively.

Credits

Sources:

Jesse, L. and D. Lewis. 2014. Hedge apples for home pest control? Iowa State University. <https://hortnews.extension.iastate.edu/2014/10-24/hedgeapple.html>

Nesom, G. Ohio buckeye. U.S. Department of Agriculture/Natural Resources Conservation Service. https://plants.usda.gov/plantguide/pdf/pg_acgl.pdf

Row, J. and W. Geyer. Kentucky coffeetree. U.S. Department of Agriculture/Natural Resources Conservation Service. https://plants.usda.gov/plantguide/pdf/cs_gydi.pdf

Wikipedia. Kentucky coffeetree. Accessed online.

Photos were made available under Creative Commons licenses specified by the photographers. **Page 1:** SEWilco from Wikimedia Commons, Plant Image Library, www.flickr.com/photos/138014579@N08/37535367854/ and .../3640865186/. **Page 2:**

.../cara-fealy-choate, www.flickr.com/photos/carabou/12160072506/; danbruell, www.flickr.com/photos/mr-morshee/7966077448/; melina1965, www.flickr.com/photos/8989278@N03/1402899821/; Christine Vaufrey, www.flickr.com/photos/christing/150532387/; Sheldon Gerhardt, NDSU; Michael E., www.flickr.com/photos/24842334@N07/10362474553/; U.S. Department of Agriculture, www.flickr.com/photos/usdagov/16065180554/; Ulrike Leone from Pixabay. **Page 3:** Andrei Zverev, www.flickr.com/photos/azibiss/22011967059/; Tom Kalb, NDSU (2); www.fishingbuddy.com/what-seeds-are-these; Tom Kalb, NDSU; Cynthia Cheney, www.flickr.com/photos/11746801@N04/6215642152/; *Jyl*, www.flickr.com/photos/germanmissy/27062587877/; Sally Wilson, www.flickr.com/photos/pomathorn/14175472242/; Neil Smith, www.flickr.com/photos/crowdive/166192039/..

Written by Tom Kalb, who expresses gratitude to the NDSU educators who contributed to this report: Craig Askim, Brad Brummond, Kelsey Deekert, Kendell Eras, Sheldon Gerhardt, Don Kinzler, Scott Knoke, Carrie Knutson, Lindsay Maddock, Esther McGinnis, Andy Robinson, Crystal Schaanaman, Emily Tzpu, LoAyne Voight, Nicole Wardner and Kathy Wiederholt.

The information given herein is for educational purposes only. References to commercial products or trade names are made with the understanding that no discrimination is intended and no endorsement by North Dakota Extension is implied.

NDSU Extension Service, North Dakota State University of Agriculture and Applied Science, and the U.S. Department of Agriculture cooperating. Greg Lardy, Interim Director, Fargo, North Dakota. Distributed in furtherance of the Acts of Congress of May 8 and June 30, 1914. We offer our programs and facilities to all persons regardless of race, color, national origin, sex, handicap, age, Vietnam era veterans status, or sexual orientation; and are an equal opportunity employer. This publication will be made available in alternative formats for people with disabilities upon request (701) 231-7881.

NDSU

EXTENSION