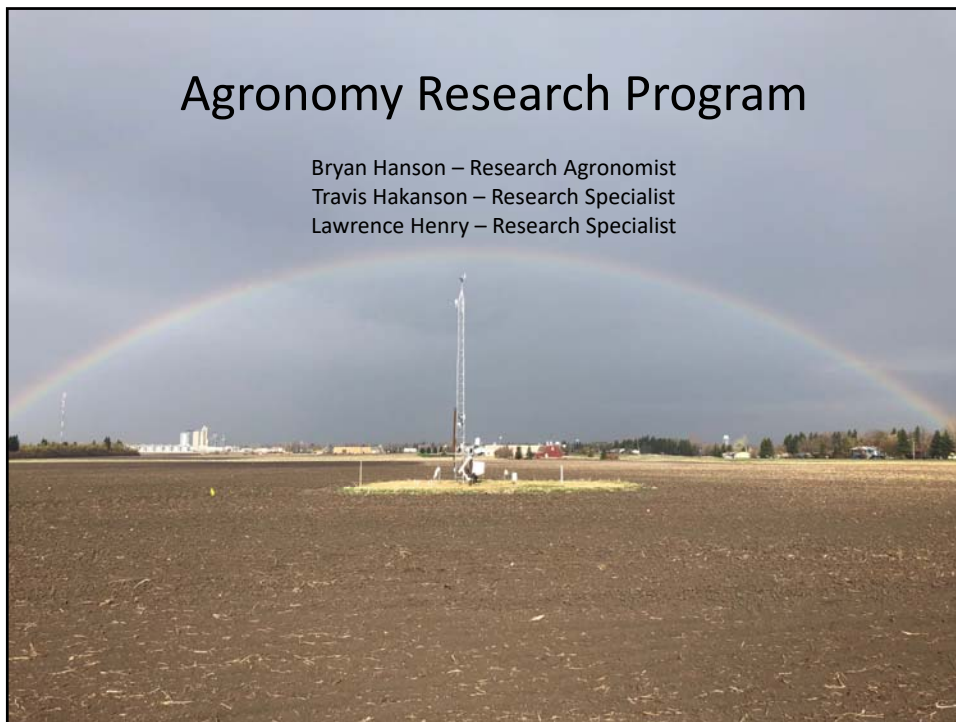


Agronomy Research Program

Bryan Hanson – Research Agronomist
Travis Hakanson – Research Specialist
Lawrence Henry – Research Specialist



Research Responsibilities

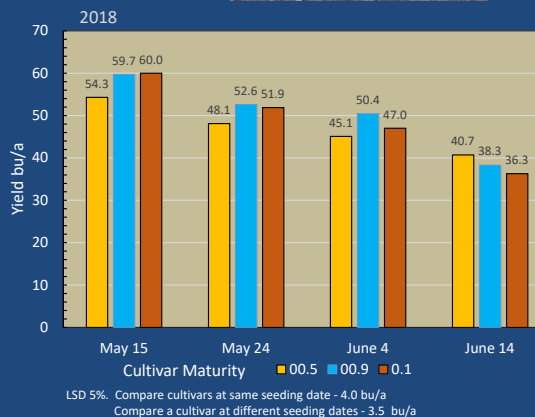
Variety testing of all crops

- 70-75% of work effort
- 25-30% Production Management
- Small grains, flax, dry bean, canola, soybean
 - Meet with breeders in spring
- Contract Variety Testing
 - Canola, Soybean, Sunflower
 - Corn, Field Pea, Faba Bean
- Private Company
 - Cibus - canola variety development
 - Valent - wheat seed trt.
 - Nuseed - canola



Research Responsibilities

- Private Company
 - Lallemand - canola product
- Grants
 - Spartan
 - Soybean Seeding Date x Variety
 - Syngenta Hybrid Wht.



Research Responsibilities

Off-Station Research Trials

- Pembina County (Cavalier)
 - HRSW, Soybean (RR, Xtend, E3),
- Walsh County (Park River)
 - HRSW, Soybean(Conv, RR, Xtend, E3), RR1 Nursery
- Nelson County (Pekin)
 - HRSW, Soybean (RR, Xtend, E3)
- Towner County (Cando)
 - HRSW, Durum
 - Syngenta Wheat Trial



Industrial Hemp Production in North Dakota

Bryan Hanson-LREC, Dr. Burton Johnson-Fargo, Travis Hakanson-LREC, Lawrence Henry-LREC,
Venkat Chapara-LREC.

Hemp Variety Trial
Seeding Date, Variety, and Seed Treatment
Hemp Hail Stand Reduction



- 2020
 - NCIS – Hemp
 - RMA – Faba Bean
- Land Management
 - Canola \$46K





