

Faba Bean Disease identification and Management

Venkat Chapara, PhD

Plant Pathologist

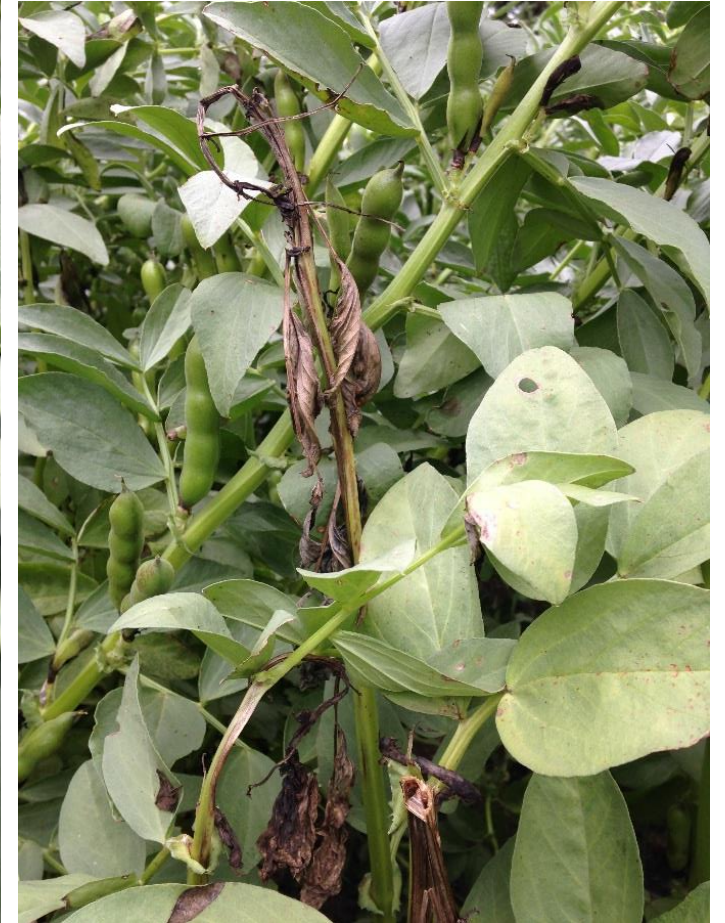
Langdon Research Extension Center

Faba Bean and Diseases

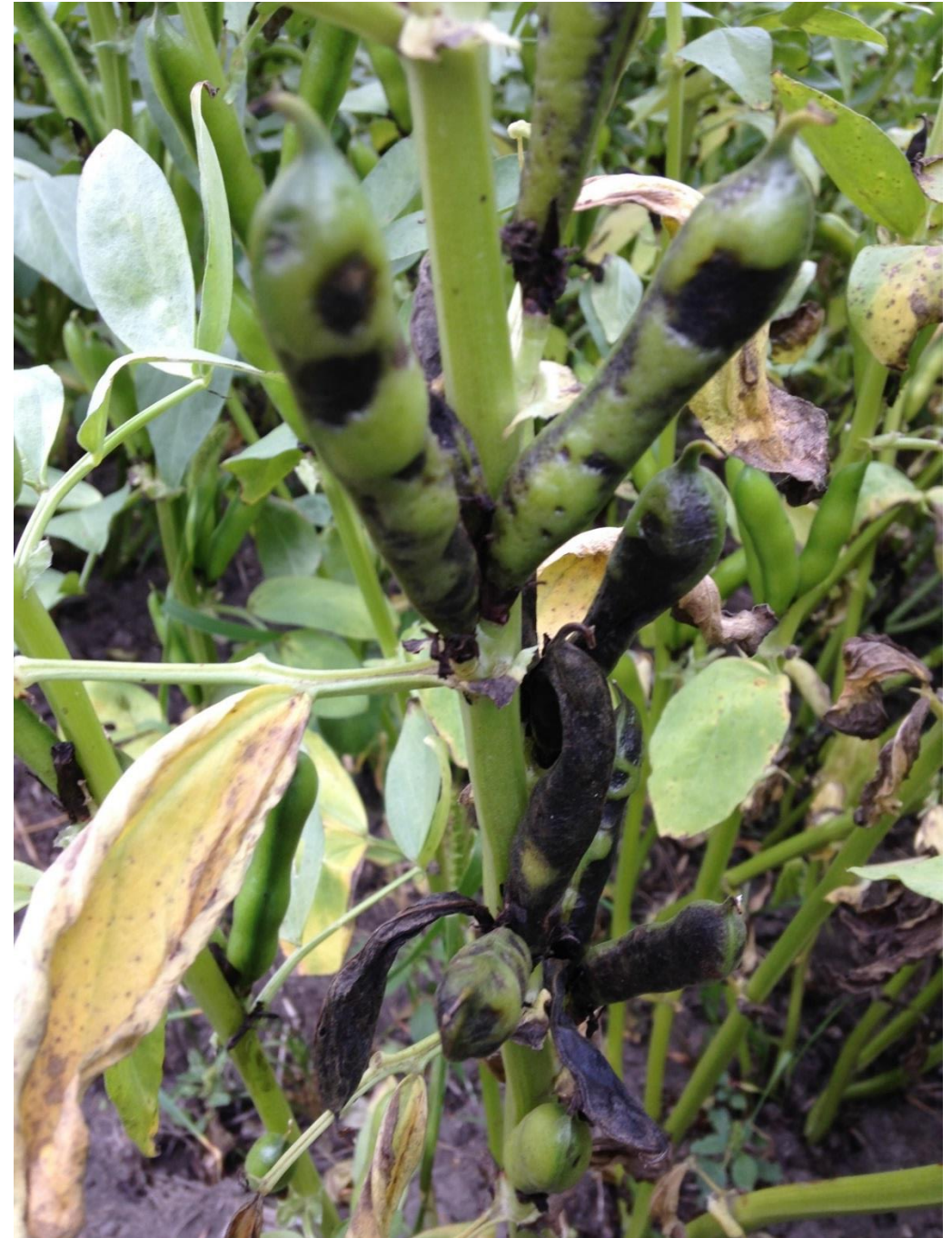
- Emergent crop in ND
- Cool season Legume
- High protein next to soybean
- Alternative to field peas in ND?
- Disease survey done last year
- Chocolate brown Spot and white mold were found



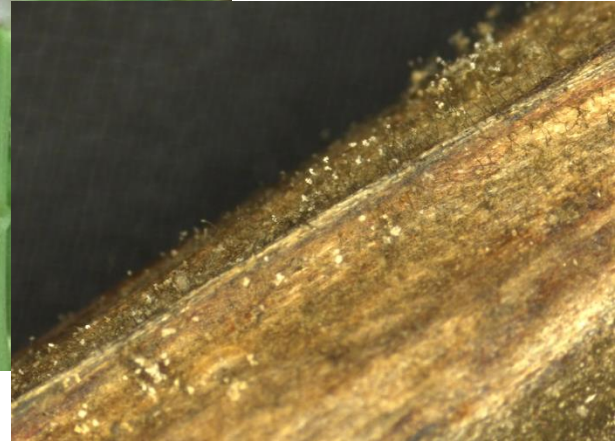
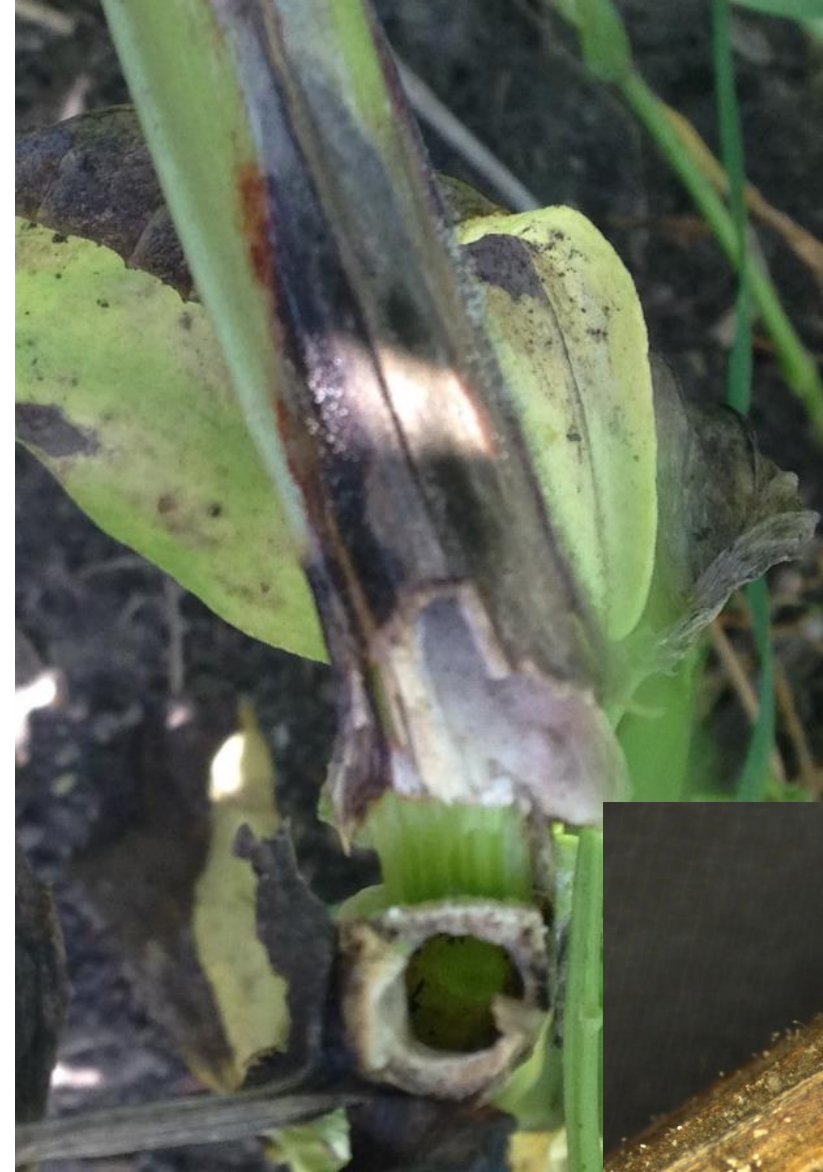
CBS-Tip Drying



CBS on Pods



Lodging due to CBS



CBS on leaf, stem, pod and seed

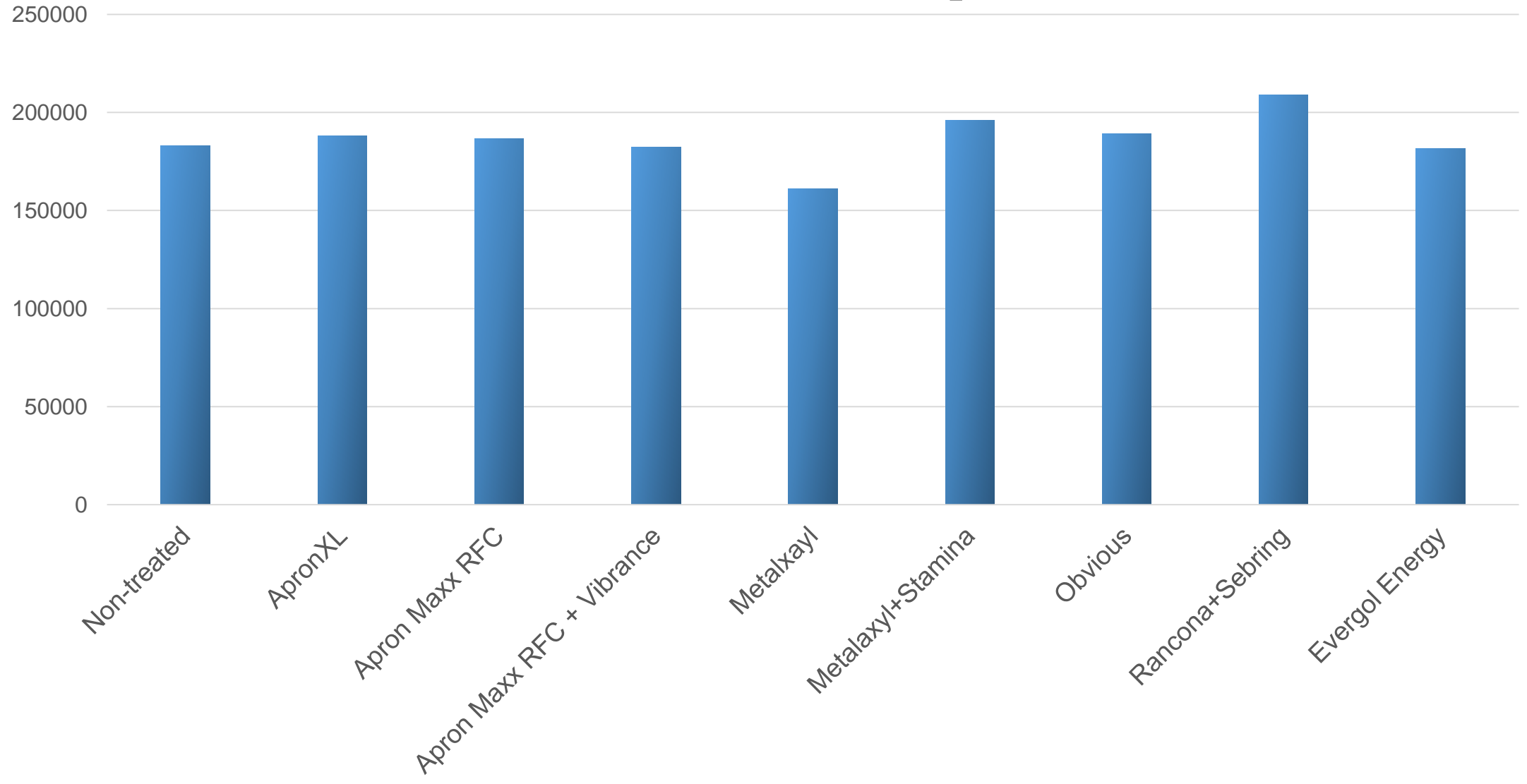


Management objectives

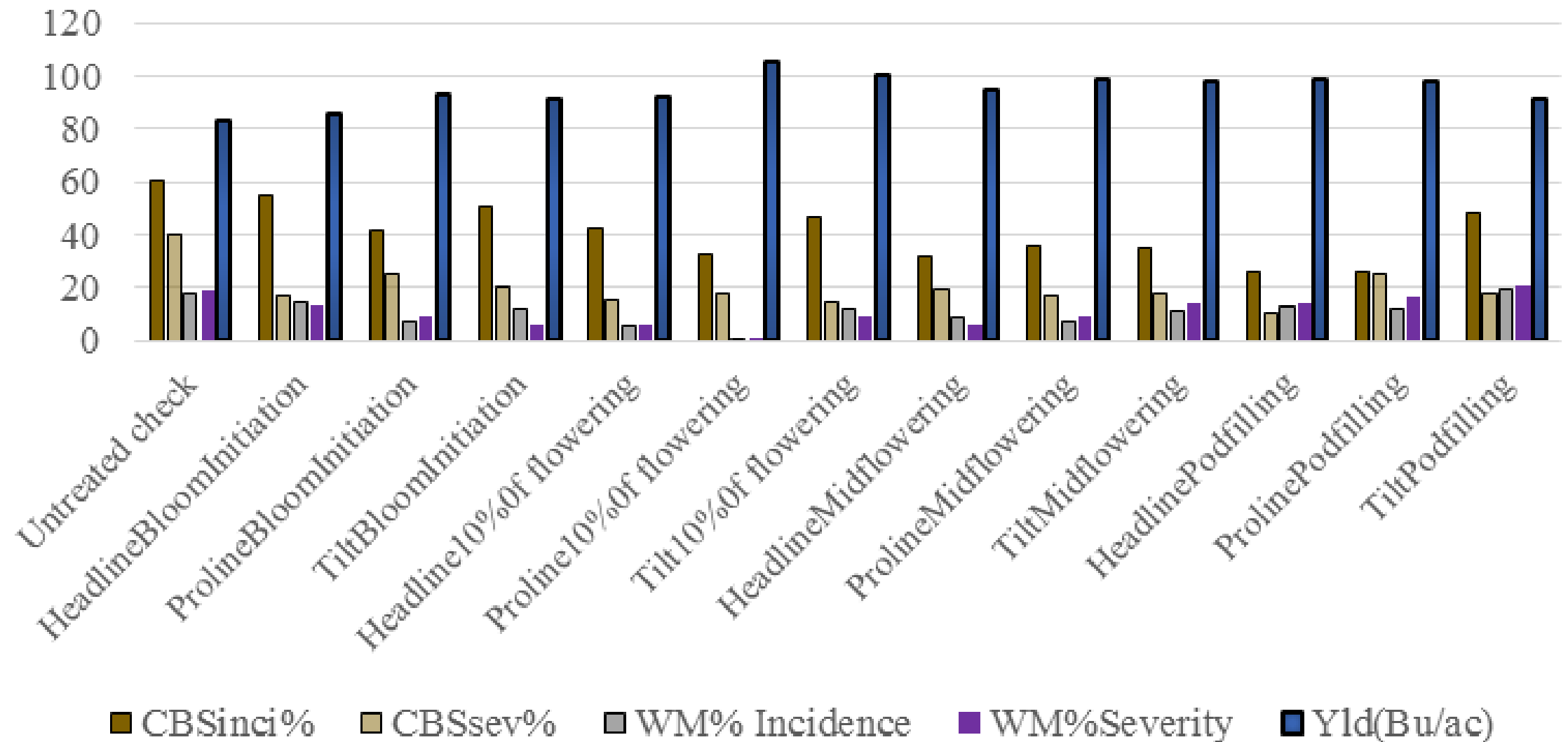
- Seed treatment efficacy on CBS?
- Which fungicide and application timing/s are most effective to manage CBS?
- What fungicide recommendations (or non-recommendations) can we make?



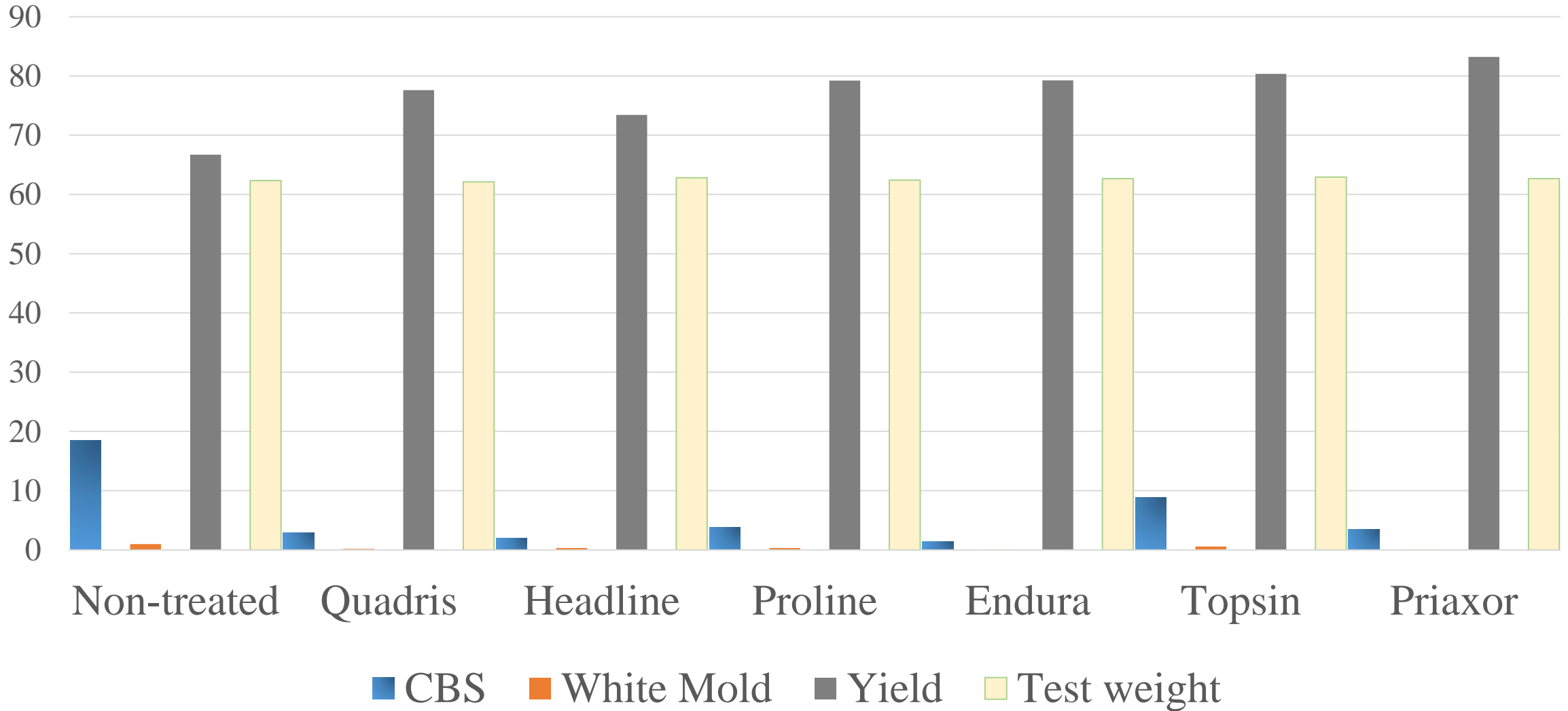
Seed Treatment Vs Plant Population



Fungicide VS Application Timing to manage Chocolate Brown Spot in Faba Beans



Evaluation of fungicide efficacy for management of foliar diseases of Faba bean: Single application



Take Home Message

- Chocolate Brown Spot caused by *Botrytis fabae* is more prevalent in ND.
- Chocolate Brown Spot needs at least a single fungicide spray between full bloom and mid-pod fill stage
- Proline/Headline/ Endura/ Priaxor could be better options to manage CBS
- White mold is another disease to look for control in wet years such as 2016

Remember: These conclusions are drawn on single year research data

Acknowledgements

- Funding From SBARE
- Funding From Product Harmonization Board
- Dr. Michael Wunsch
- Technical Assistance
 - Amanda Arens
 - Travis Hakanson
 - Lawrence Henry
 - Bryan Hanson
 - Randy Mehlhoff



Thank You