

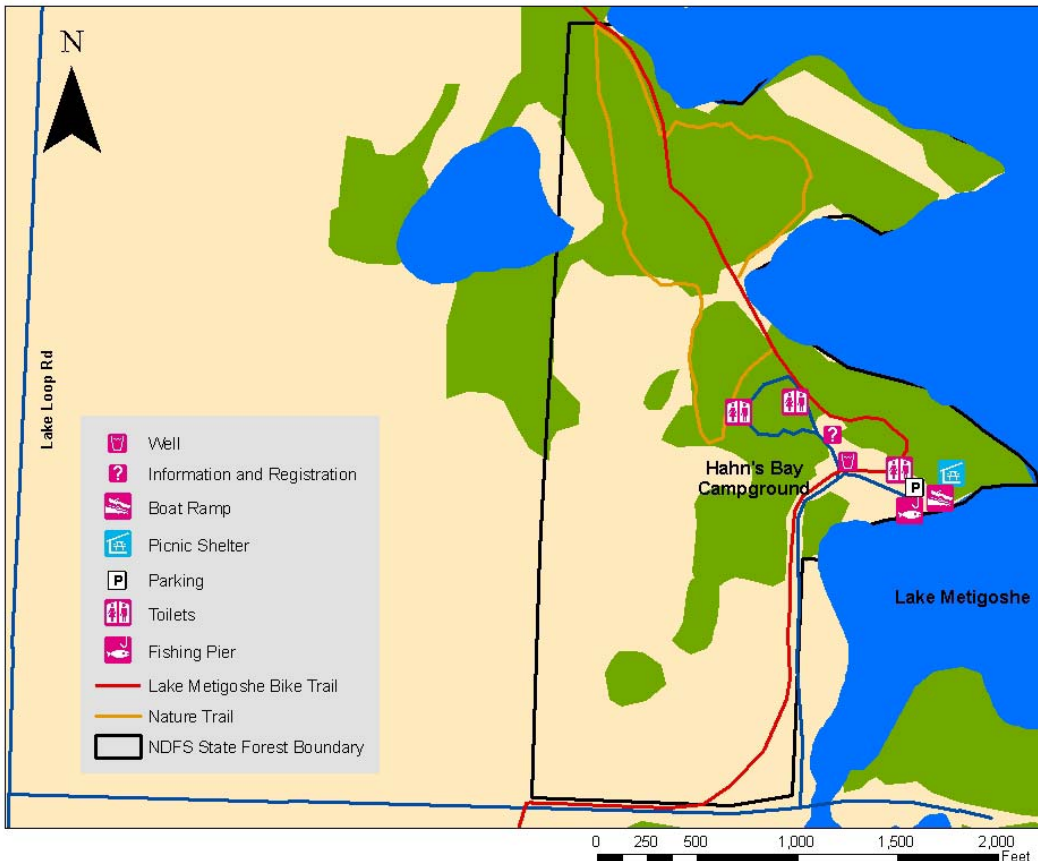
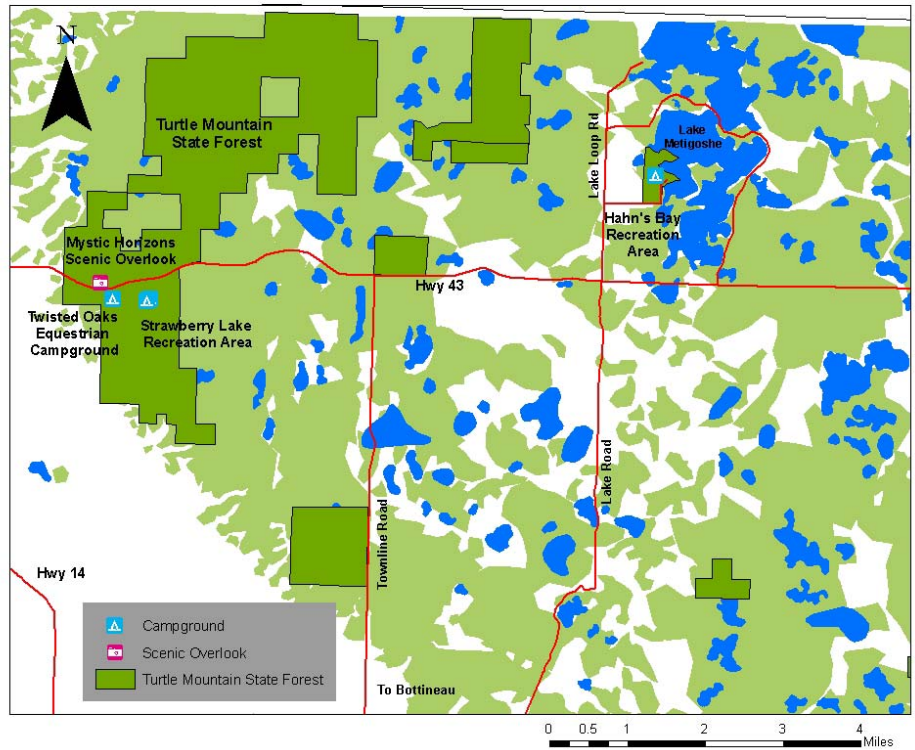


Turtle Mountain State Forest

The Turtle Mountain State Forest consists of 7,814 acres of woodlands, wetlands and grassland.

Common trees and shrubs include aspen, balsam poplar, bur oak, green ash and paper birch.

The forest also has many species of fruit and nut-producing shrubs, such as chokecherry, pin cherry, juneberry, plum and hazelnut.



Hahn's Bay Recreation Area

This area provides primitive camping, fishing and boat access to Lake Metigoshe and a picnic shelter.

The area has a number of short hiking trails around the campground and access to the Lake Metigoshe paved biking trail.