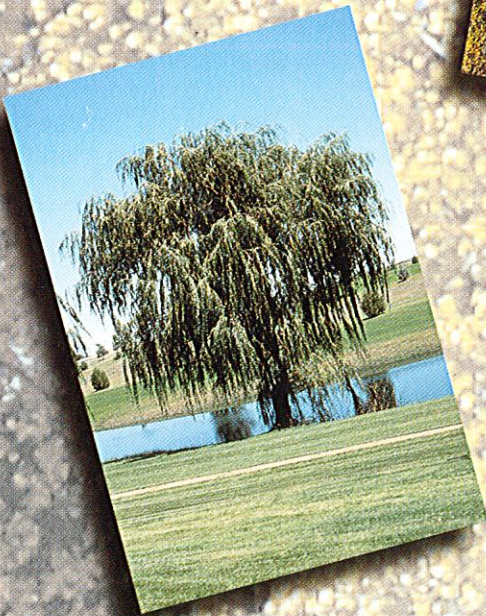
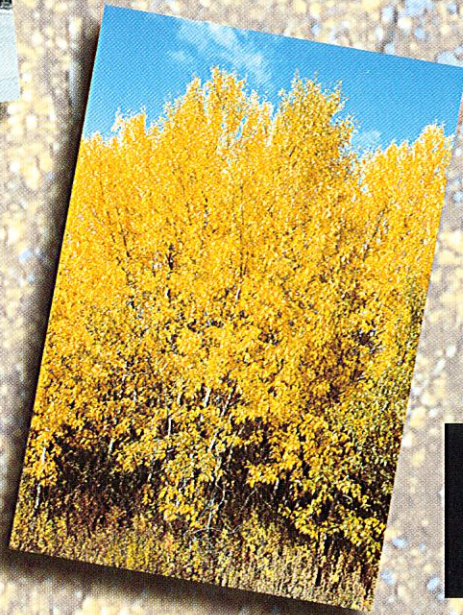
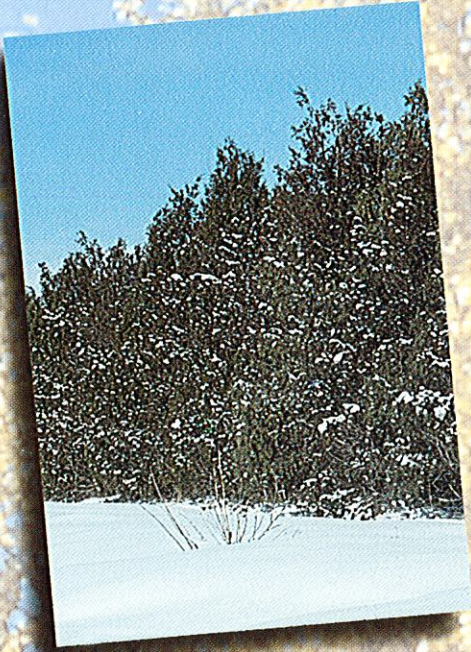


*Conservation*

*Trees*

*for*

**NORTH  
DAKOTA**



**Deciduous Shrubs**

	Mature Height	Growth Form	Cold Hardiness	Drought Resistance	Alkaline Tolerance	Wildlife Value	Growth Rate*
Russian Almond	3-5	Medium	G	F	F	G	M
Buffaloberry	6-14	Open	G	G	G	E	M
Caragana	6-14	Dense	G	G	G	G	M
Nanking Cherry	6-10	Open	G	G	F	F	M
Chokecherry	12-25	Medium	G	F	F	G	M
European Cotoneaster	8-12	Open	G	F	F	G	M
Golden Currant	3-6	Open	G	F	G	G	M
Redosier Dogwood	7-10	Medium	G	F	F	G	F
Tatarian Honeysuckle	10-12	Medium	G	F	G	G	M
Juneberry	6-15	Medium	G	F	F	E	S
Common Lilac	8-12	Dense	G	G	G	G	M
American Plum	8-10	Open	G	F	F	E	M
Hansen Hedge Rose	4-6	Medium	G	F	G	E	M
Sandcherry	3-6	Open	G	F	F	F	M
Silverberry	5-9	Medium	G	G	G	G	F
Lemonade Sumac	3-8	Open	G	F	F	F	M

**Deciduous Trees**

Siberian Crabapple	15-25	Medium	G	F	F	G	M
Arnold Hawthorn	15-20	Dense	G	G	F	G	M
Amur Maple	15-20	Medium	G	F	P	F	M
Russian-olive	15-25	Medium	G	G	E	G	F
Green Ash	35-45	Open	G	G	G	F	M
Boxelder	30-40	Medium	G	F	F	F	F
Cottonwood	50-100	Open	G	P	G	F	F
Siberian Elm	25-40	Medium	G	F	G	F	F
Hackberry	40-50	Open	G	F	F	G	M
Silver Maple	40-50	Medium	F	P	P	F	F
Bur Oak	40-60	Medium	G	G	F	G	S
Poplar	40-60	Open	F	P	F	G	F
Black Walnut	35-45	Open	P	P	F	G	M
Golden Willow	40-55	Medium	F	P	F	G	F

**Conifers**

Eastern Redcedar	30-35	Dense	G	G	G	E	S
Rocky Mt. Juniper	20-30	Dense	G	G	G	E	S
Ponderosa Pine	50-70	Medium	G	G	G	F	M
Scotch Pine	25-50	Medium	F	F	G	F	M
Black Hills Spruce	30-60	Dense	G	F	F	G	M
Colorado Blue Spruce	30-65	Dense	G	F	F	G	M

E-Excellent • G-Good • F-Fair • P-Poor

\* F-Fast • M-Medium • S-Slow

*All programs and services are offered on a nondiscriminatory basis in regards to race, color, national origin, sex, religion, age, disability, political beliefs, and marital or family status.*

## Almond, Russian

(*Prunus tenella*)

**Mature Height:** 3-5 feet

**Growth Rate:** slow

**Growth Habit:** upright, suckering

**Cold Hardiness:** good

**Drought Resistance:** fair

**Wildlife Value:** very good browse and cover

**Flowers:** abundant pink to rose

**Other:** prefers loamy soils, bears ovoid nut



## Buffaloberry

(*Shepherdia argentea*)

**Mature Height:** 6-14 feet

**Growth Rate:** medium

**Growth Habit:** loosely branched thorny shrub

**Cold Hardiness:** good

**Drought Resistance:** good

**Wildlife Value:** ideal cover, nesting, and browse; good late winter food source

**Disease:** stem decay, branch canker

**Other:** well-adapted to dry, moderately alkaline, and saline soils; berries used for jellies

## Caragana

(*Caragana arborescens*)

**Mature Height:** 6-14 feet

**Growth Rate:** medium

**Growth Habit:** erect, oval shrub

**Cold Hardiness:** good

**Drought Resistance:** good

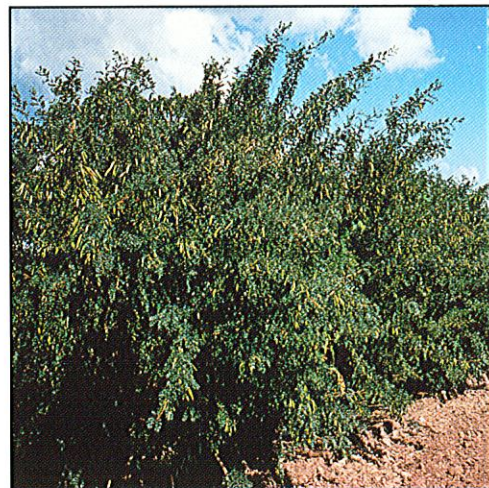
**Wildlife Value:** used for nesting

**Flowers:** small showy yellow

**Pests:** blister beetles

**Disease:** stem decay, leaf spot and branch cankers

**Other:** produces pods with multiple seeds



## Cherry, Nanking

(*Prunus tomentosa*)

**Mature Height:** 6-10 feet

**Growth Rate:** medium

**Growth Habit:** upright, semi-spreading

**Cold Hardiness:** good

**Drought Resistance:** good

**Wildlife Value:** fruit for songbirds, browse

**Flowers:** small pink

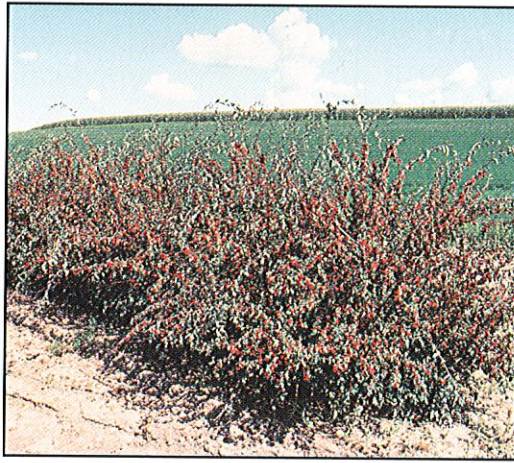
**Disease:** branch cankers

**Other:** prefers loamy soils, short-lived, excellent fruit for pies and jellies

# Chokecherry

(*Prunus virginiana*)

- Mature Height:** 12-25 feet
- Growth Rate:** medium
- Growth Habit:** oval to rounded, suckering
- Cold Hardiness:** good
- Drought Resistance:** fair
- Wildlife Value:** excellent for food and cover
- Flowers:** creamy-white
- Pests:** prairie tent caterpillar
- Disease:** "western" x-disease, black knot, stem decay, shothole canker
- Other:** purple leaf selections for landscaping, adapted to wide variety of soils, fruits for jellies



# Cotoneaster, European

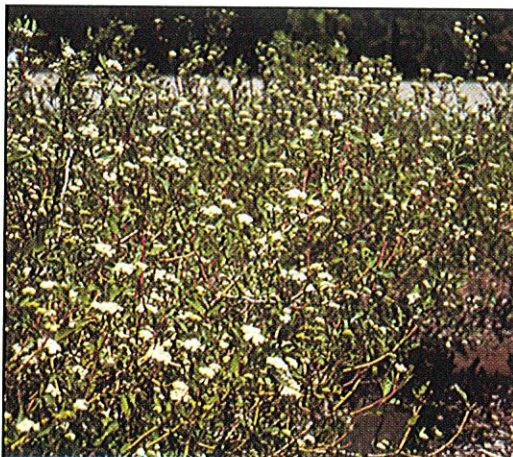
(*Cotoneaster integerrimus*)

- Mature Height:** 8-12 feet
- Growth Rate:** medium
- Growth Habit:** spreading, open and upright arching branches
- Cold Hardiness:** good
- Drought Resistance:** poor
- Wildlife Value:** fruit attracts birds
- Flowers:** pinkish-white
- Pests:** pear slug
- Disease:** fireblight
- Other:** showy red berries, not adapted to alkaline or saline soils, should not be planted near crabapples

# Currant, Golden

(*Ribes odoratum*)

- Mature Height:** 3-6 feet
- Growth Rate:** medium
- Growth Habit:** upright, spreading
- Cold Hardiness:** good
- Drought Resistance:** fair
- Wildlife Value:** roosting, loafing, nesting and browse
- Flowers:** fragrant golden-yellow
- Pests:** currant worm
- Disease:** anthracnose, leafspots, white pine blister rust host
- Other:** berries used fresh and for jelly



# Dogwood, Redosier

(*Cornus sericea*)

- Mature Height:** 7-10 feet
- Growth Rate:** fast
- Growth Habit:** loose and rounded, many stems
- Cold Hardiness:** good
- Drought Resistance:** fair
- Wildlife Value:** dense cover and food source
- Flowers:** creamy
- Disease:** twig blight
- Other:** dark, blood-red bark provides winter color

# Honeysuckle, Tatarian

(*Lonicera tatarica*)

**Mature Height:** 10-12 feet

**Growth Rate:** medium

**Growth Habit:** spreading

**Cold Hardiness:** good

**Drought Resistance:** fair

**Wildlife Value:** nesting and food

**Flowers:** yellow-pink

**Other:** plant only Russian aphid resistant cultivars



# Juneberry

(*Amelanchier alnifolia*)

**Mature Height:** 6-15 feet

**Growth Rate:** slow

**Growth Habit:** upright

**Cold Hardiness:** good

**Drought Resistance:** fair

**Wildlife Value:** high quality cover and food

**Flowers:** white

**Other:** nutritious fruit used fresh, frozen or processed

# Lilac, Common

(*Syringa vulgaris*)

**Mature Height:** 8-12 feet

**Growth Rate:** medium

**Growth Habit:** upright, leggy, suckering

**Cold Hardiness:** good

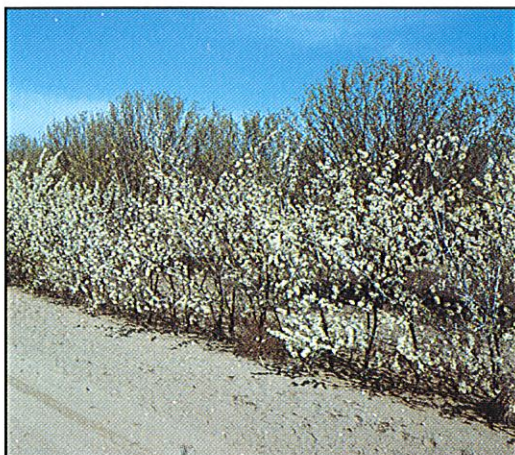
**Drought Resistance:** good

**Wildlife Value:** little value for fruit or browse, songbird nesting

**Flowers:** white to purple, fragrant and showy

**Pests:** lilac borer

**Disease:** powdery mildew



# Plum, American

(*Prunus americana*)

**Mature Height:** 8-10 feet

**Growth Rate:** medium

**Growth Habit:** round-headed crown, suckers freely

**Cold Hardiness:** good

**Drought Resistance:** fair

**Wildlife Value:** important for nesting, loafing, browse and food

**Flowers:** white

**Pests:** prairie tent caterpillar

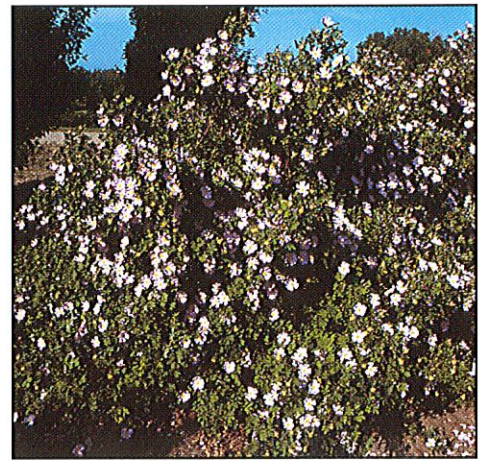
**Disease:** stem decay, branch cankers, black knot, plum pockets

**Other:** thorny, winter-hardy, thicket-forming tall shrub with edible fruit

## Rose, Hansen Hedge

(*Rosa species*)

**Mature Height:** 4-6 feet  
**Growth Rate:** medium  
**Growth Habit:** stems upright, semi-weeping  
**Cold Hardiness:** good  
**Drought Resistance:** fair  
**Wildlife Value:** excellent food source, nesting and cover  
**Flowers:** showy pink  
**Other:** fruit referred to as a rose hip and a source of Vitamin C



## Sandcherry

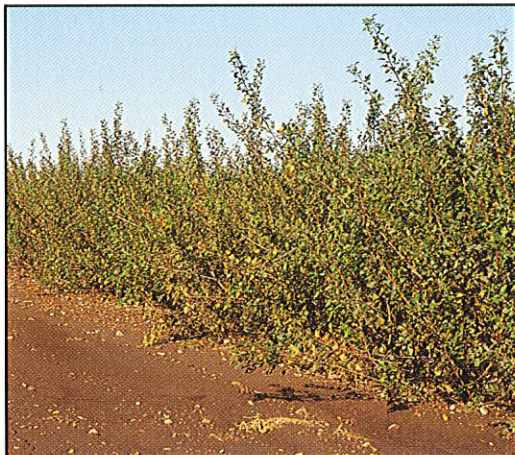
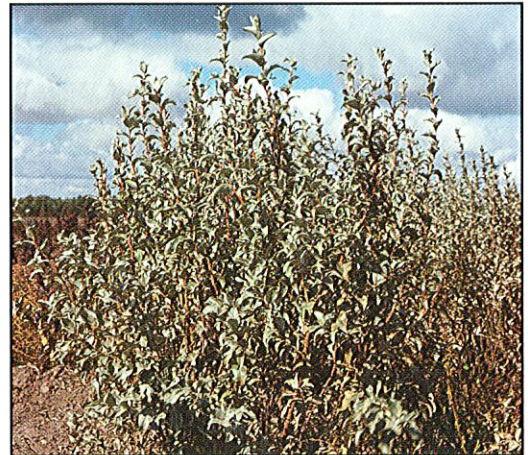
(*Prunus besseyi*)

**Mature Height:** 3-6 feet  
**Growth Rate:** medium  
**Growth Habit:** open, spreading shrub  
**Cold Hardiness:** good  
**Drought Resistance:** fair  
**Wildlife Value:** good loafing, food source and browse  
**Flowers:** white  
**Disease:** leaf curl, black knot, fireblight  
**Other:** relatively short-lived, fruit for pies and jellies

## Silverberry

(*Elaeagnus commutata*)

**Mature Height:** 5-9 feet  
**Growth Rate:** medium  
**Growth Habit:** narrow, upright, suckers profusely  
**Cold Hardiness:** good  
**Drought Resistance:** good  
**Wildlife Value:** dense thickets and food source  
**Pests:** subject to damage by rabbits  
**Disease:** branch cankers  
**Other:** silver-white leaves



## Sumac, Lemonade

(*Rhus trilobata*)

**Mature Height:** 3-8 feet  
**Growth Rate:** medium  
**Growth Habit:** ascending, new branchlets hairy  
**Cold Hardiness:** good  
**Drought Resistance:** fair  
**Wildlife Value:** fall and winter food for birds  
**Flowers:** light yellow  
**Other:** scented leaves

# Crabapple, Siberian

(*Malus baccata*)

**Mature Height:** 15-25 feet

**Growth Rate:** medium

**Growth Habit:** round to spreading

**Cold Hardiness:** good

**Drought Resistance:** fair

**Wildlife Value:** fair cover, good fruit and browse

**Flowers:** white

**Pests:** cankerworm, apple maggot

**Disease:** fireblight, cedar-apple rust, apple scab, canker

**Other:** needs a well-drained, moist soil; should be protected from girdling or browsing; should not be planted near juniper, cedar or cotoneaster



# Hawthorn, Arnold

(*Crataegus arnoldiana*)

**Mature Height:** 15-20 feet

**Growth Rate:** slow

**Growth Habit:** upright to horizontal

**Cold Hardiness:** good

**Drought Resistance:** good

**Wildlife Value:** nesting, food and browse

**Flowers:** white with a disagreeable odor

**Other:** tolerates the soot and grime of cities, large thorns

# Maple, Amur

(*Acer ginnala*)

**Mature Height:** 15-20 feet

**Growth Rate:** medium

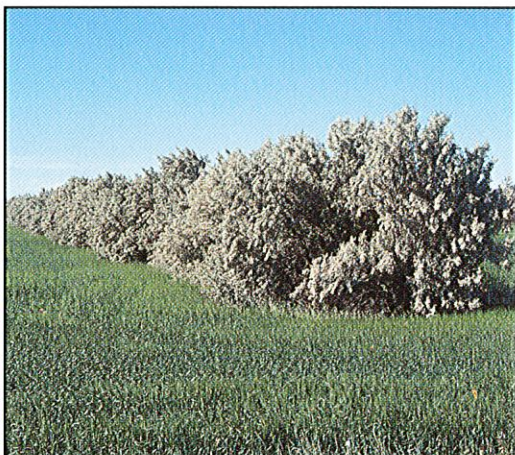
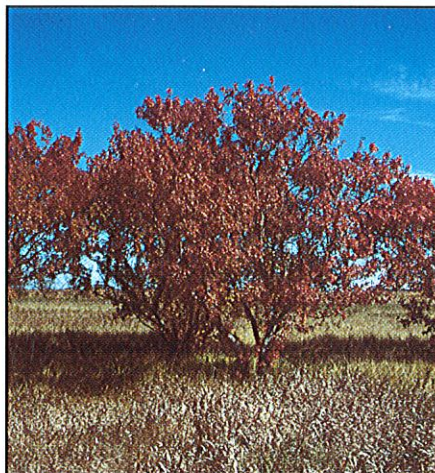
**Growth Habit:** multi-stemmed

**Cold Hardiness:** good

**Drought Resistance:** fair

**Wildlife Value:** browse, fair cover

**Other:** adaptable to a variety of soils, except alkaline, sensitive to phenoxy herbicides, outstanding bright reddish fall colors



# Russian-olive

(*Elaeagnus angustifolia*)

**Mature Height:** 15-25 feet

**Growth Rate:** fast

**Growth Habit:** branches random and spreading

**Cold Hardiness:** good

**Drought Resistance:** good

**Wildlife Value:** excellent

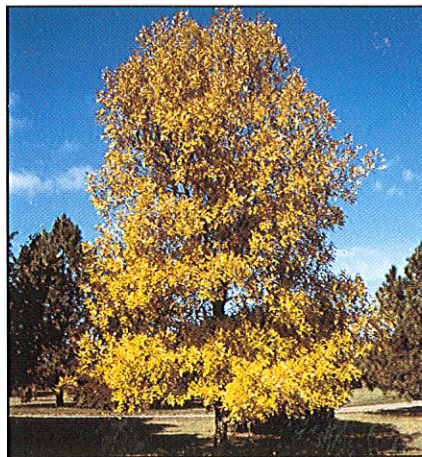
**Disease:** branch and stem cankers

**Other:** tolerates saline/alkaline soils, may invade unmanaged bottomlands and moist pastures, thorny, silver leaf color

## Ash, Green

(*Fraxinus pennsylvanica*)

- Mature Height:** 35-45 feet  
**Growth Rate:** medium  
**Growth Habit:** single trunk, oval to elliptical crown  
**Cold Hardiness:** good  
**Drought Resistance:** good  
**Wildlife Value:** nesting site  
**Pests:** cankerworms, ash borers, ash plant bugs  
**Disease:** stem decay, branch and twig cankers, anthracnose, leaf rust, ash yellows  
**Other:** can withstand flooding for short periods of time



## Boxelder

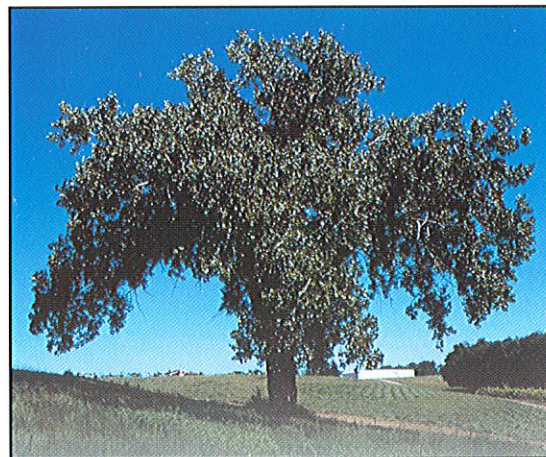
(*Acer negundo*)

- Mature Height:** 30-40 feet  
**Growth Rate:** fast  
**Growth Habit:** short crooked trunk, commonly divides into several stout and widespreading branches  
**Cold Hardiness:** good  
**Drought Resistance:** fair  
**Wildlife Value:** food and cover  
**Pests:** boxelder bugs  
**Disease:** stem decay  
**Other:** grows best on well-drained moist soils, highly sensitive to phenoxy herbicides

## Cottonwood

(*Populus deltoides*)

- Mature Height:** 50-100 feet  
**Growth Rate:** fast  
**Growth Habit:** upright, branches spread to form a large open crown  
**Cold Hardiness:** good  
**Drought Resistance:** poor  
**Wildlife Value:** browse  
**Pests:** aphids, gall mite, leaf beetles  
**Disease:** leaf rust, leaf spot and canker, wetwood, stem decay  
**Other:** requires a moist site



## Elm, Siberian

(*Ulmus pumila*)

- Mature Height:** 25-40 feet  
**Growth Rate:** fast  
**Growth Habit:** open with several ascending branches  
**Cold Hardiness:** good  
**Drought Resistance:** fair  
**Wildlife Value:** nesting sites  
**Pests:** cankerworm  
**Disease:** canker, wetwood  
**Other:** highly sensitive to phenoxy herbicides  
 brittle wood which is subject to breakage



# Hackberry

(*Celtis occidentalis*)

**Mature Height:** 40-50 feet

**Growth Rate:** medium

**Growth Habit:** single trunk, broadening crown

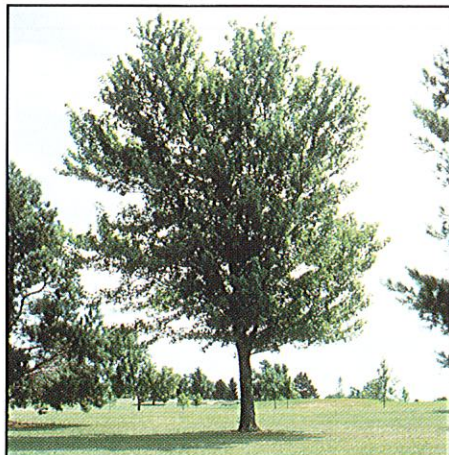
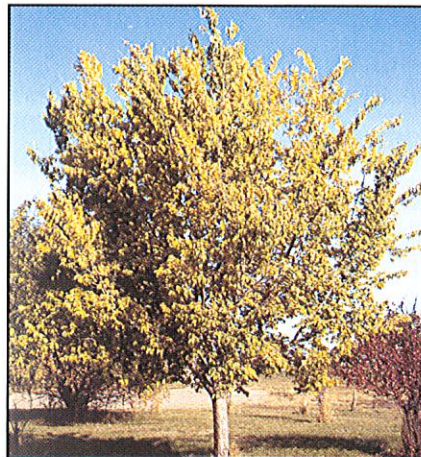
**Cold Hardiness:** good

**Drought Resistance:** fair

**Wildlife Value:** fruit for birds and mammals

**Pests:** commonly damaged by browsing rodents, rabbits and deer

**Other:** good replacement for the elm because of its similar form and adaptability, somewhat tolerant to alkaline soils



# Maple, Silver

(*Acer saccharinum*)

**Mature Height:** 40-50 feet

**Growth Rate:** fast

**Growth Habit:** upright with strong spreading branches

**Cold Hardiness:** fair

**Drought Resistance:** poor

**Wildlife Value:** browse, fair cover

**Other:** not adapted to saline/alkaline soils, very subject to iron and manganese chlorosis in alkaline soils, sensitive to phenoxy herbicides, plant in protected sites

# Oak, Bur

(*Quercus macrocarpa*)

**Mature Height:** 40-60 feet

**Growth Rate:** slow

**Growth Habit:** stout branches, informal spreading to rounded

**Cold Hardiness:** good

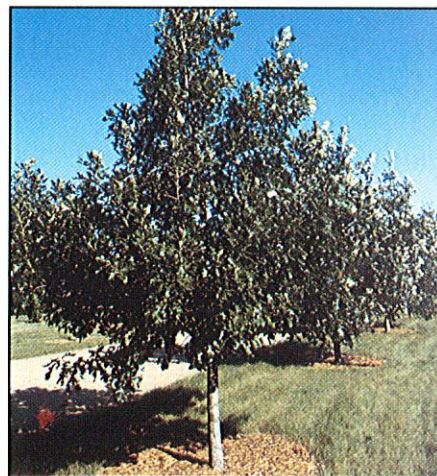
**Drought Resistance:** good

**Wildlife Value:** excellent food and cover

**Pests:** commonly damaged by rodents, rabbits and deer

**Disease:** leaf and twig anthracnose, leaf curl, stem decay

**Other:** long lived tree with deep taproot



# Poplar, Hybrid

(*Populus hybrids*)

**Mature Height:** 40-60 feet

**Growth Rate:** fast

**Growth Habit:** upright spreading branches

**Cold Hardiness:** fair

**Drought Resistance:** poor

**Wildlife Value:** browse

**Pests:** poplar borer, aphids, gall mite, leaf beetles, rodents, deer

**Disease:** leaf rust, leaf spot, canker, wetwood, stem decay

**Other:** requires a moist site, lacks cold and drought hardiness of the native cottonwood



## Walnut, Black

(*Juglans nigra*)

**Mature Height:** 35-45 feet

**Growth Rate:** medium

**Growth Habit:** oval to rounded crown

**Cold Hardiness:** poor

**Drought Resistance:** poor

**Wildlife Value:** good food and cover

**Other:** prefers deep, well-drained, fertile, loamy soils, valuable timber tree, plant in protected sites



## Willow, Golden

(*Salix alba* 'Vitellina')

**Mature Height:** 40-55 feet

**Growth Rate:** fast

**Growth Habit:** large, spreading to round crown

**Cold Hardiness:** fair

**Drought Resistance:** poor

**Wildlife Value:** provides cover, browse

**Pests:** aphids

**Other:** branches shed easily

## Juniper, Rocky Mountain

(*Juniperus scopulorum*)

**Mature Height:** 20-30 feet

**Growth Rate:** slow

**Growth Habit:** dense pyramidal, upward reaching branches

**Cold Hardiness:** good

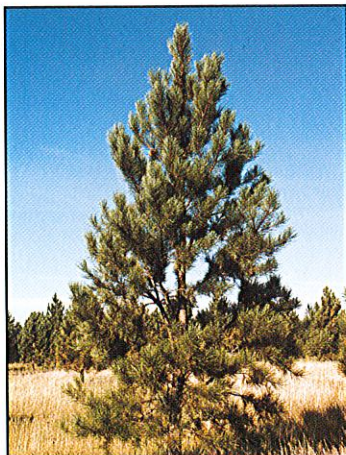
**Drought Resistance:** good

**Wildlife Value:** excellent food, nesting, and cover

**Pests:** spider mites

**Disease:** cedar-apple rust, tip blight

**Other:** should not be planted near crabapples, juneberries, currant or hawthorns



## Pine, Ponderosa

(*Pinus ponderosa*)

**Mature Height:** 50-70 feet

**Growth Rate:** medium

**Growth Habit:** pyramidal when young

**Cold Hardiness:** good

**Drought Resistance:** good

**Wildlife Value:** food and nesting for birds

**Pests:** tip moth, sawfly, pine needle scale, aphids

**Disease:** needle cast, gall rust

**Other:** tolerates saline and alkaline soils

## Pine, Scotch

(*Pinus sylvestris*)

**Mature Height:** 25-50 feet

**Growth Rate:** medium

**Growth Habit:** rounded and open

**Cold Hardiness:** fair

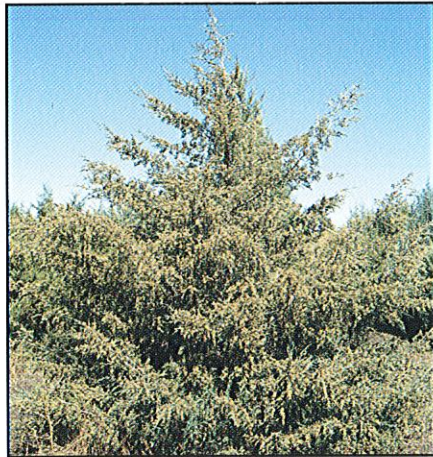
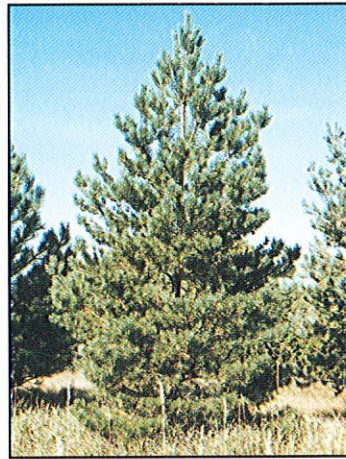
**Drought Resistance:** poor

**Wildlife Value:** nesting and winter cover

**Pests:** tip moth, sawfly, pine needle scale, aphids

**Disease:** needle cast, gall rust

**Other:** prefers moist well-drained soils



## Redcedar, Eastern

(*Juniperus virginiana*)

**Mature Height:** 30-35 feet

**Growth Rate:** slow

**Growth Habit:** dense pyramidal

**Cold Hardiness:** good

**Drought Resistance:** good

**Wildlife Value:** excellent food, nesting and cover

**Pests:** spider mites

**Disease:** cedar-apple rust, tip blight

**Other:** should not be planted near crabapples, juneberries, or hawthorns

## Spruce, Black Hills

(*Picea glauca* var. *densata*)

**Mature Height:** 30-60 feet

**Growth Rate:** medium

**Growth Habit:** broad pyramidal to conical crown

**Cold Hardiness:** good

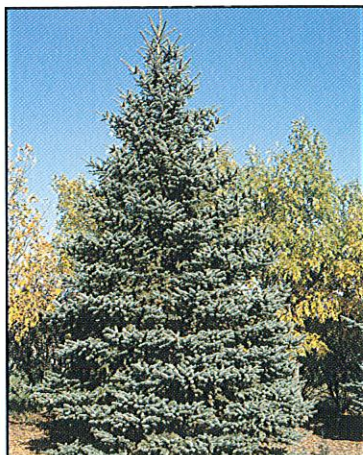
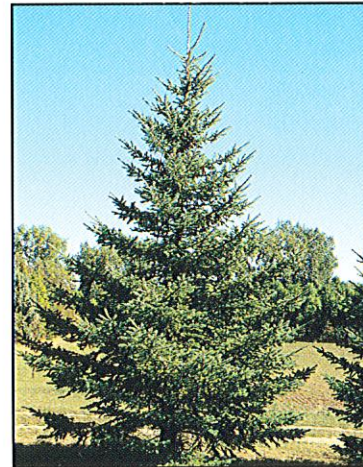
**Drought Resistance:** fair

**Wildlife Value:** nesting, browse, good cover

**Pests:** spider mite, spruce needle miner, pine needle scale, yellow-headed spruce sawfly, aphids

**Disease:** needle blight

**Other:** grows best on moist loams



## Spruce, Colorado Blue

(*Picea pungens*)

**Mature Height:** 30-65 feet

**Growth Rate:** medium

**Growth Habit:** branching is broad and dense, branches extending to ground

**Cold Hardiness:** good

**Drought Resistance:** fair

**Wildlife Value:** nesting site

**Pests:** spider mites, spruce needle miner, pine needle scale, yellow-headed spruce sawfly, aphids

**Disease:** needle cast, canker, needle blight

**Other:** performs best on moist, well-drained loams

This publication was completed by the Adams County Soil Conservation District in cooperation with the Natural Resources Conservation Service, NDSU Extension Service, ND Game and Fish – CoverLocks, ND Forest Service, ND Association of Soil Conservation Districts, and Pheasants Forever.

Contact your local soil conservation district office for assistance in designing your tree planting.

[www.ag.ndsu.nodak.edu/aginfo/trees/ndtreinf.htm](http://www.ag.ndsu.nodak.edu/aginfo/trees/ndtreinf.htm)

*Photos courtesy of:*

---

Towner Nursery

---

ND Forest Service

---

Lincoln-Oakes Nursery

---

ND Tree Handbook

---

Adams County Soil  
Conservation District

---

North Dakota  
Game & Fish Department's

