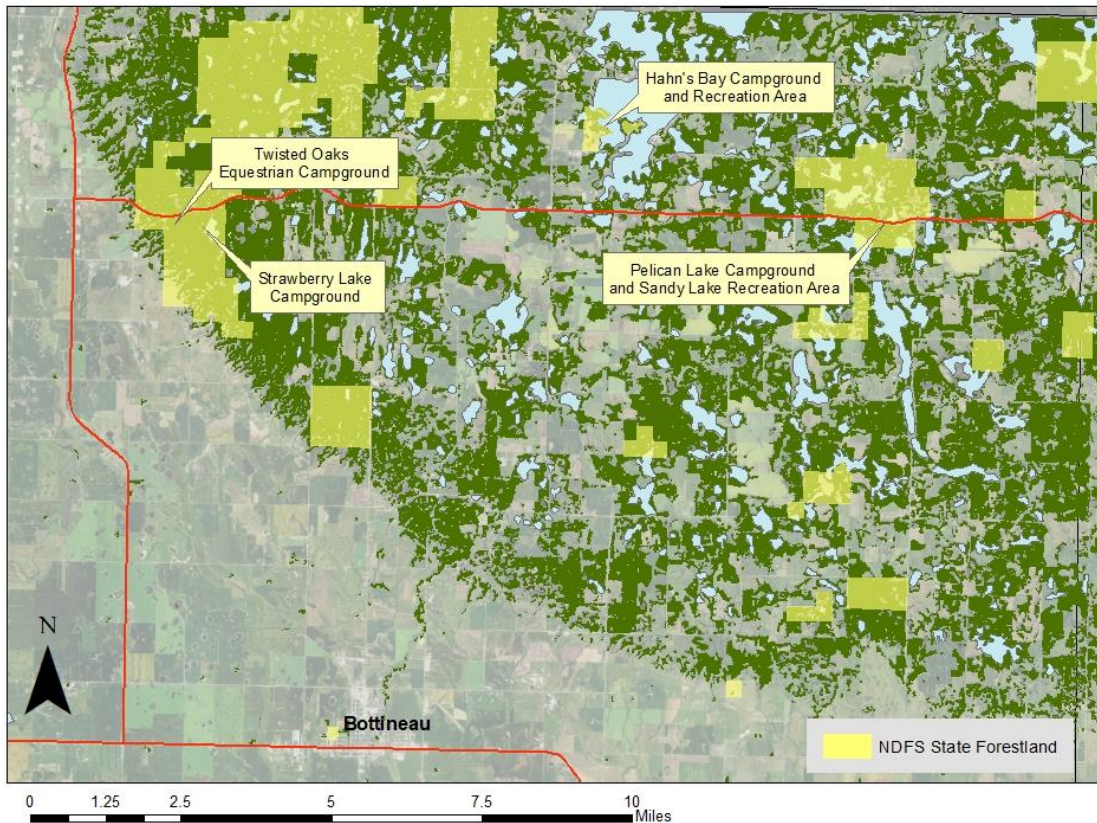


Campground and Recreation Areas on the State Forests

The North Dakota Forest Service manages 4 primitive campgrounds in the Turtle Mountains north of Bottineau ND. Campgrounds are located at Strawberry Lake, Twisted Oaks (Equestrian), Hahn's Bay on Lake Metigoshe, and Pelican Lake. The agency manages 2 day use recreational areas at Hahn's Bay and Sandy Lake.

NDFS Campgrounds and Recreation Areas



Campgrounds and Camping:

Registration and a fee are required of all overnight campers staying at Twisted Oaks, Strawberry Lake, Hahn's Bay, and Pelican Lake campgrounds. The campgrounds are open only to registered campers between the hours of 11 p.m. and 6 a.m. There is no reservation system for campsites. All campsites are available on a first come basis.

Camping fees are \$15.00 per night in all campgrounds. An additional fee of \$5 per horse per night is required at the Twisted Oaks Equestrian Campground.

In designated campgrounds, quiet hours are from 11 p.m. and 6 a.m.

Camping in excess of 14 days and leaving equipment or campsites unattended for more than 24 hours is prohibited.

Any vehicle, equipment or camping supplies left unattended for more than 24 hours may be confiscated by the North Dakota Forest Service and held for a period of 30 days. At the end of this period said property may be disposed of by the North Dakota Forest Service.

Firewood is available for a nominal fee in the developed campgrounds.

No fee is required for backcountry camping where all supplies are carried in and all trash is carried out.

Pets:

Pets are allowed provided they are kept on a leash and personally attended at all times. In mowed or maintained areas, owners must clean up after their pets.

Fires/Fireworks:

Lighting of fires is allowed in cooking grills and campground rings. Leaving fires unattended is prohibited. Lighting of any fire on the State Forests is subject to state and local restrictions during periods of high fire danger including county fire bans.

Fires must be completely extinguished before leaving.

The lighting of fireworks is prohibited on all State Forests unless authorized by the State Forester.

Recreation Areas:

There is no fee for use of the recreation areas including Hahn's Bay Recreation Area and Sandy Lake Recreation Areas. Picnic Shelters are available to the public on a first come basis.

Glass beverage containers are prohibited on all shorelines, docks, and boat ramps. All containers must be disposed of properly in trash containers.

The policy of pets and fires/fireworks in campgrounds apply to all recreation areas.

Organized group activities (special events) for State Forest Recreation Areas (day use areas and campgrounds) must submit an organized group activity request form 30 days prior to the planned event. For more information contact Mitch Thompson (701.228.3700, Mitchell.thompson@ndsu.edu



For Additional Information Contact:
North Dakota Forest Service
1037 Forestry Drive
Bottineau ND 58318
701.228.3700