

Palmer Amaranth Weed Watch: From Bus Tour to Raising Awareness in North Dakota

Public Value Statement

Palmer amaranth education promotes proactive control to reduce economic losses to North Dakota.

The Situation

Palmer amaranth aggressively competes with row crops, with reported yield losses as great as 91 percent in corn (Massinga et al. 2012) and 78 percent in soybeans (Bensch et al. 2003) in Kansas. Some Palmer amaranth biotypes are resistant to six unique herbicide sites of action; some biotypes are cross-tolerant to multiple sites of action. Early identification of Palmer amaranth is vital to reduce economic losses in North Dakota.

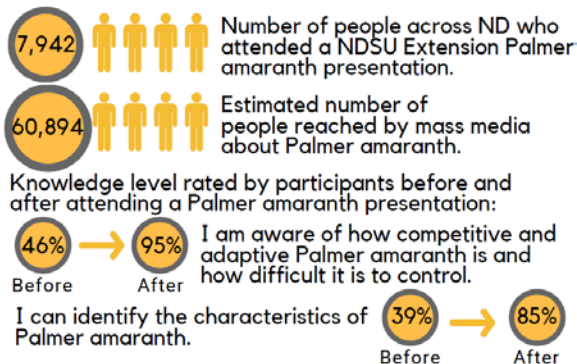
Extension Response

A program team consisting of NDSU Extension specialists and agents traveled to Nebraska to learn Palmer amaranth identification and management in grower fields from University of Nebraska – Lincoln Extension staff, local agronomists and farmers.

The program team developed teaching materials, including PowerPoint presentations, problem-based learning scenarios and other activities and resources, based on their experiences gained on the Nebraska tour. A train-the-trainer workshop for NDSU Extension staff was held in January 2018. The teaching materials were available for all NDSU Extension staff to use for educational events.

Impacts

Presentations taught by Extension specialists and agents during the 2017-18 meeting season raised awareness of the potential economic impact of Palmer amaranth to North Dakota and how to identify the weed.



Feedback

- “Many producers commented they were pleased with the Palmer amaranth information I shared because it came from my experiences, not just information I read from another source.” – Extension agent
- “I had producers who weren’t at the meetings stop in the office to ask for more information about Palmer because their neighbor or relative had been to a meeting who told them about it.” – Extension agent
- “I had not heard of Palmer amaranth before attending this training.” – North Dakota producer

Primary Contacts

Tom Peters
Extension Sugarbeet Agronomist
701-231-8131
thomas.j.peters@ndsu.edu

Alicia Harstad
Stutsman County Extension Agent
701-252-9030
alicia.harstad@ndsu.edu

Bill Hodous
Ramsey County Extension Agent
701-662-6027
bill.hodous@ndsu.edu

Collaborators

Craig Askim, Tim Becker, Lindy Berg, Brad Brummond, Paige Brummund, Anitha Chirumamilla, Calla Edwards, Kelsie Egeland, Greg Endres, Sheldon Gerhardt, Randy Grueneich, Katelyn Hain, Sam Haugen, Brian Jenks, Angie Johnson, Clair Keene, Breana Kiser, Scott Knoke, Samantha Lahman, Chandra Langseth, Joel Lemer, Lindsay Maddock, Duaine Marxen, Cindy Olson, Julianne Racine, Crystal Schaunaman, Alyssa Scheve, Rick Schmidt, Yolanda Schmidt, Melissa Seykora, Rachel Wald, Nicole Wardner, Katie Wirt and Brian Zimprich

Non-Extension Collaborators

North Dakota Soybean Council, North Dakota Department of Ag and Natural Resources Conservation Service