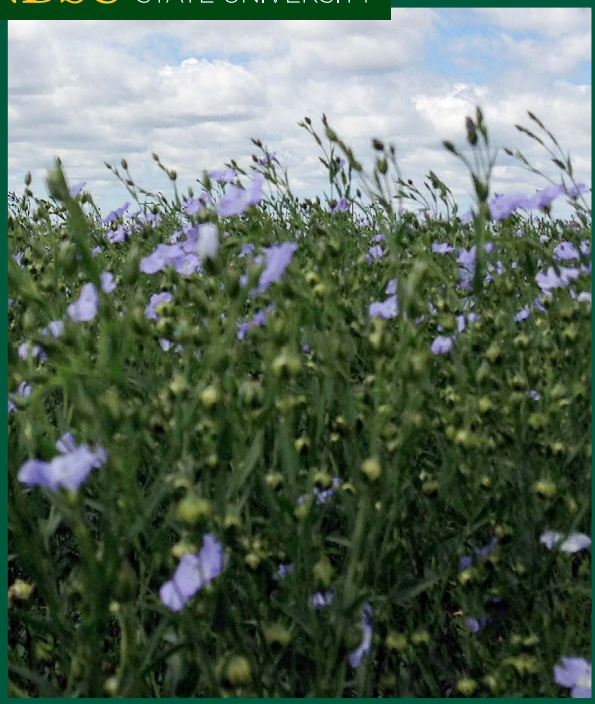




# Omega

## Flax

**NDSU** NORTH DAKOTA STATE UNIVERSITY



### Characteristics

Yield	high
Seed Color	yellow
Height	medium
Maturity	medium
Rust	R <sup>1</sup>
Wilt	MS/MR <sup>1</sup>

<sup>1</sup>R = resistant; MR = moderately resistant; MS = moderately susceptible

### Comments

**Omega** flax was released in 1989. Omega is a yellow-seeded flax variety that has high yield potential. It is adapted to the north-central flax growing region of the US. Omega has medium maturity, blue flowers, and medium plant height. This variety was the first yellow-seeded flax with multiple gene flax rust resistance.

### Strengths

- High yield
- Rust resistance

### Agronomic Performance of Omega Across ND & SD, 2008-2014

	Omega	Gold ND	Carter	York
Yield (bu/a)	20.5	22.7	22.3	22.6
Test wt. (lb/bu)	52.9	52.9	53.0	52.9
Height (inches)	29.3	31.8	30.0	29.6
Oil Content (%)	40.0	40.5	39.8	39.0
Maturity (days to first flower)	49.2	51.0	49.8	49.2