

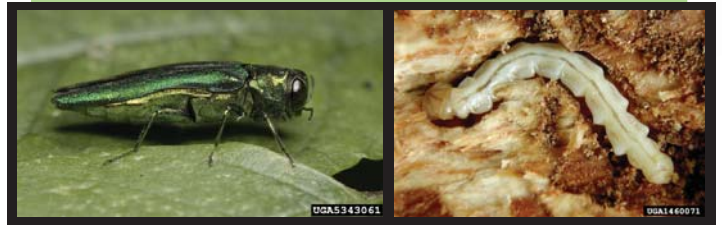
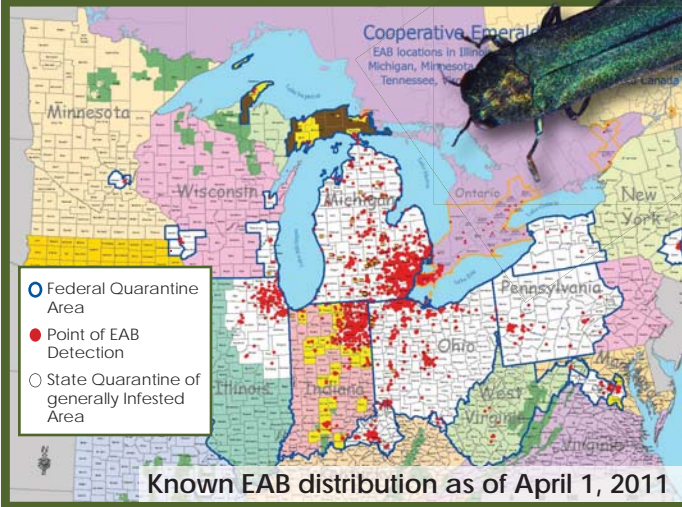
This Tree is at Risk!



Emerald Ash Borer (EAB) has not been found in North Dakota yet, but when it arrives, ash trees will be at risk.

First found in Michigan in 2002
 Ohio in 2003
 Northern Indiana in 2004
 Northern Illinois and Maryland in 2006
 Western Pennsylvania and West Virginia in 2007
 Wisconsin, Missouri and Virginia 2008
 St. Paul, Minn. and New York 2009
 Minneapolis, Minn. and Iowa 2010

Where will it be found next?



D. Cappaert, MI State U., Bugwood

Here's what you can do:

- Don't bring firewood into North Dakota; use local sources.
- If people you know are coming to North Dakota, tell them to leave firewood at home. If someone already has brought it, burn it immediately!
- Learn to know the signs and symptoms of emerald ash borer and report possible occurrences.
- Plant tree species other than ash (*Fraxinus* spp.). EAB only attacks ash trees. There are no known resistant species or cultivars. A high percentage of trees in North Dakota communities are ash.



H. Russell, MI State U., Bugwood

Get up-to-date information at:
www.emeraldashborer.info
www.agdepartment.com

North Dakota Forest Service
 North Dakota Department of Agriculture
 USDA Animal and Plant Health Inspection Service
 NDSU Extension Service



NDSU is an equal opportunity institution.