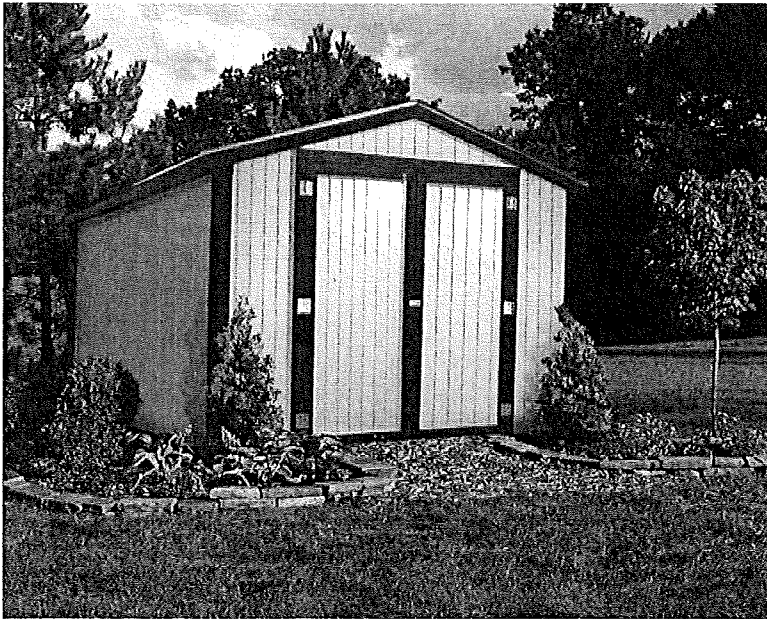


Midwest Manufacturing® EZ Build™ 10'W x 12'D Gable Shed

Model Number: 1926620



EVERYDAY LOW PRICE

\$1,453.26

SALE PRICE

\$1,381.65 each

Good Through 4/6/19

You Save \$71.61 After Sale Price

Size: 10' x 12' ▼

Siding Type: 8"OC T-1-11 Siding ▼



Not Available Online

Not available at **GRAND FORKS**
[Check Another Store for Availability](#)

Description & Documents

The EZ Build 10' x 12' Gable Storage Building is a great addition to your backyard both in style and function. This storage shed has simple appeal that makes it look great alone or as a part of a landscaping scheme. There is plenty of room inside to store outdoor equipment, tools, toys and more.

Dimensions: 10' x 12'

Brand Name: EZ Build

Features

- 10' x 10' shown with T1-11 siding and swinging door
- EZ Build frames at 2' on center
- Hand-framed entry door
- 3/4" treated plywood floor
- Includes siding, shingles and door hardware
- Detailed instructions
- The price shown is the sum of the prices for the individual items included in the material list for this project. You may buy all the materials or any part. Some items may be special order or not available. Because of code variances, we cannot guarantee the materials listed will meet your code requirements. This is a suggested design and material list only. We do not guarantee the completeness or price. Items in this material list are located inside the store and throughout the outside yard. Assembly and cutting is required.

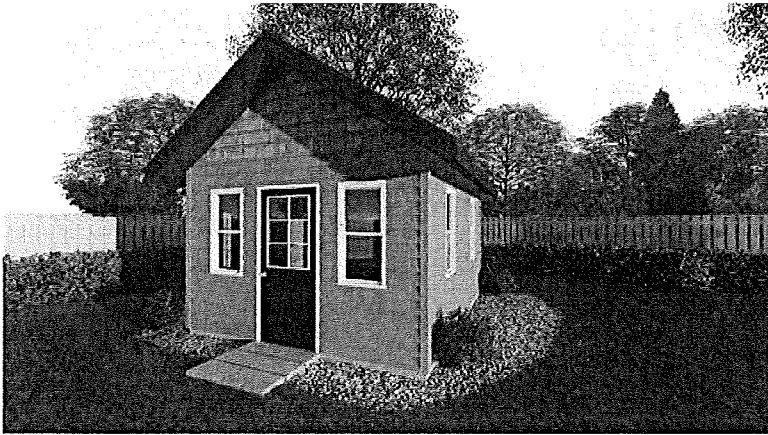
Specifications

Supplies Needed for 10 x 12 Gable Shed

QUANTITY	DESCRIPTION	
16 EACH	2X4-8' STUD/#2+BTR SPF	CONST./FRAMING
1 EACH	2X4-12' #2&BTR SPF	CONST./FRAMING
4 EACH	1X4-6' #3 STANDARD	BOARD
15 EACH	1X4-8' #3 STANDARD	BOARD
4 EACH	1X4-14' #3 STANDARD	BOARD
4 EACH	1X6-6' #3 STANDARD	BOARD
4 EACH	1X6-12' #3 STANDARD	BOARD
11 EACH	1X2-8 FURRING	S4S PINE/SPRUCE
4 EACH	2X4-12' AC2 GREEN TRTD	GROUND CONTACT
4 EACH	3/4 (23/32CAT)4X8 AC2 TRT	PLYWOOD AG PAD
5 EACH	7/16 (7/16CAT)4X8 OSB	3-WHITE STRIPES
11 EACH	5/8 (19/32CAT)4X8 TEXTURED8"	OC SIDING
1 EACH	#15 UNDERLAY ASTM -4869	3'X144' (4 SQ)
5 BNDL	GLASSMASTER 30 YEAR	H. STONE GRAY
6 EACH	10' STYLE D ROOF EDGE	BROWN
6 EACH	4" HINGE (SQ)-STNLS STEEN225-938	
1 EACH	4-1/2" SAFETY HASP-ZINC N102-384	
1 BOX	6D HDG BOX NAIL	5LB BOX
1 BOX	8D HDG BOX NAIL	5LB BOX
1 BOX	10D HDG BOX NAIL	5LB BOX
1 BOX	3/4" E-GALV ROOFING NAIL	5LB BOX
1 EACH	1-5/8 EXT DECK COMBO	GLD COMBO 5LB
7 EACH	10' GABLE FRAME	PREBUILT FRAME

Midwest Manufacturing® 12'W x 12'D Gardening Shed

Model Number: 12x12GardenCedar



EVERYDAY LOW PRICE

\$4,132.67

SALE PRICE

\$4,025.33 each

Limited Time Offer

You Save \$107.34 After Sale Price

Size: 12' x 12' ▼



Not Available Online

Not available at **GRAND FORKS**
Check Another Store for Availability

cedar shakes

Description & Documents

Keep your garden tools and outdoor equipment stored and organized in this 12' x 12' Gardening Shed. This storage building features specially designed trusses for extra storage with an easy-to-access loft door.

Dimensions: 12' x 12'

Brand Name: Menards

Features

- Includes framing material
- Trusses at 2' on center
- Prehung steel entry door
- Includes siding and trim
- Includes siding, steel roof and door hardware
- Detailed instructions
- The price shown is the sum of the prices for the individual items included in the material list for this project. You may buy all the materials or any part. Some items may be special order or not available. Because of code variances, we cannot guarantee the materials listed will meet your code requirements. This is a suggested design and material list only. We do not guarantee the completeness or price. Items in this material list are located inside the store and throughout the outside yard. Assembly and cutting is required.

Specifications