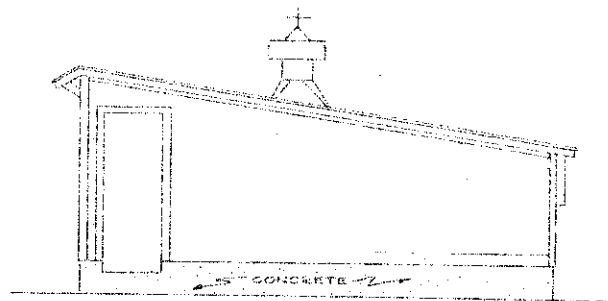
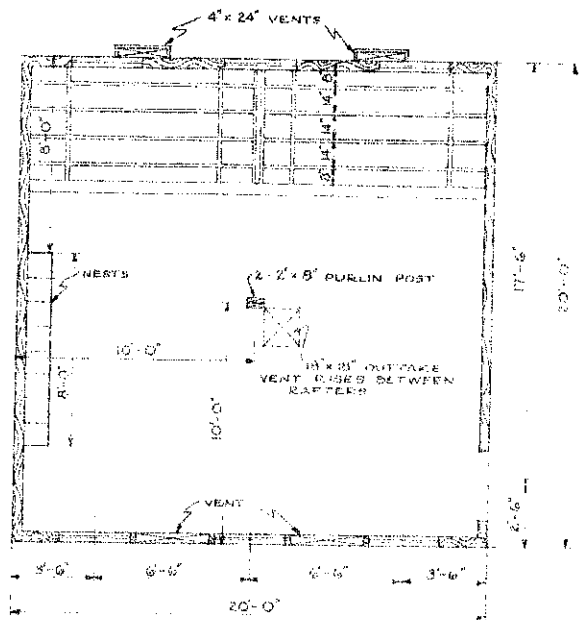


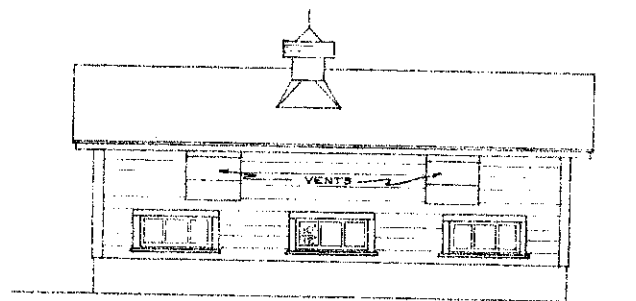
FRONT ELEVATION
SCALE $\frac{1}{4}'' = 1'-0''$



SIDE ELEVATION
SCALE $\frac{1}{4}'' = 1'-0''$

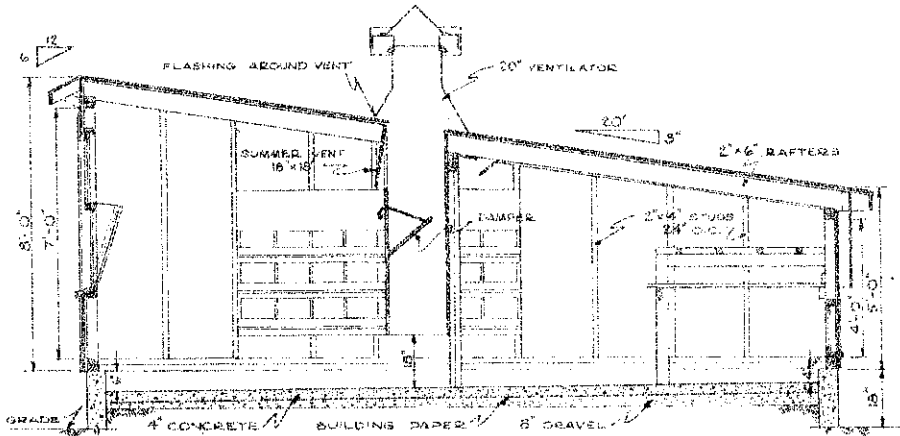


FLOOR PLAN
SCALE $\frac{1}{4}'' = 1'-0''$

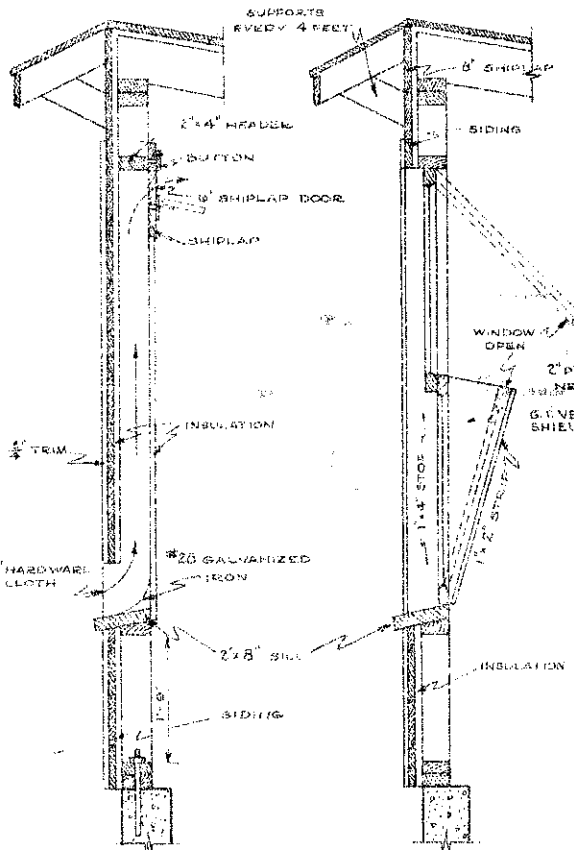


REAR ELEVATION
SCALE $\frac{1}{4}'' = 1'-0''$

COOPERATIVE EXTENSION WORK IN
AGRICULTURE AND HOME ECONOMICS
STATE OF NORTH DAKOTA
NORTH DAKOTA AGRICULTURAL COLLEGE
AND
U.S. DEPT. OF AGRICULTURE COOPERATING
EXT. AGR'L. ENGINEER—FARGO, N.DAK.
SHED ROOF POULTRY HOUSE
MIDWEST 72723 '33 EX. 5305 SHEET 1 OF 3

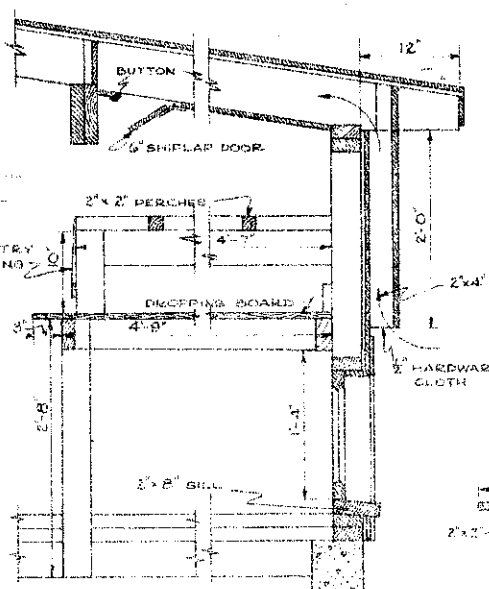


SECTION.
SCALE $\frac{3}{8}$ " = 1'-0"

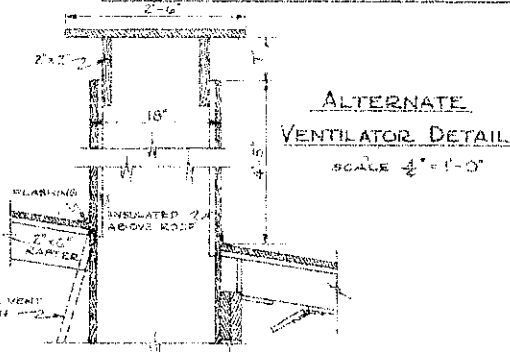


DETAIL THRU
FRONT VENT
SCALE $\frac{1}{2}$ " = 1'-0"

DETAIL THRU
FRONT WINDOW
SCALE 1" = 1'-0"



DETAIL THRU
REAR VENT
SCALE $\frac{1}{2}$ " = 1'-0"



ALTERNATE
VENTILATOR DETAIL
SCALE $\frac{1}{2}$ " = 1'-0"

BILL OF MATERIAL

FOUNDATION & FLOOR		
AMOUNT	DESCRIPTION	USE
6 CUBIC YARDS	GRAVEL OR SAND	FILL UNDER FLOOR
3 BAGS	CONCRETE	FOUNDATION
3 SHEETS	BUILDING PAPER	BETWEEN FILL & FLOOR
3 SHEETS	BUILDING PAPER	FOUNDATION & FLOOR
2 BASKETS	ROOFING CEMENT	FOUNDATION & FLOOR
2 PIPES	4" PIPE WITH CAP	FLOOR DRAIN
12	1/2" SQUARE BOLTS	ANCHOR BOLTS

DETAILED LUMBER BILL			
PIECES	SIZE	LENGTH	USE
4	2x4	10'-0"	PORCHES
2	2x6	12'-0"	WINDOWS, INTAKE & DOOR SILLS
28	2x6	12'-0"	RAFTERS
8	2x6	12'-0"	SHINGLES BOARD, BENCH HEADS
16	2x4	12'-0"	WINDOW SILLS
4	2x4	12'-0"	END BRACKETS AND END BRACKETS AND NEAR WORKING
4	2x4	12'-0"	DOOR & WINDOW HEADERS
8	2x4	12'-0"	FRONT STUDS
8	2x4	12'-0"	SILL & PLATE
8	2x4	12'-0"	SILL & PLATE
9	2x4	12'-0"	PERCHES
9	2x4	12'-0"	SHIP LAP - FRONT & VENTS
40	2x6	12'-0"	SHIP LAP - FLOOR BOARDS
40	2x6	12'-0"	SHIP LAP - ROOF BOARDS
1	2x8	12'-0"	WINDOW CHECK BOARD
1	2x8	12'-0"	INTAKE DOOR
60	1x8	12'-0"	SINGING SILL 3" THICKNESS
60	1x8	12'-0"	SINGING SILL 3" THICKNESS
24	1x4	12'-0"	FLOORING, DECORATING BOARD
14	1x4	12'-0"	FLOORING, OUTSIDE SILL
17	1x4	12'-0"	CORNICE & WINDOW TRIM
17	1x4	12'-0"	CORNICE, DOOR CASING

LOOSE BOTTOM NESTS			
PIECES	SIZE	LENGTH	USE
2	2x2	10'-0"	NEST DIVISIONS
2	2x2	10'-0"	FRONT & REAR
1	2x2	10'-0"	1 1/2" REST PLATFORM
1	2x2	10'-0"	BOTTOMS
3	2x2	8'-0"	PERCHES
2	2x2	8'-0"	PERCHES
1	2x2	8'-0"	PERCHES
1	2x2	8'-0"	PERCHES
1	2x2	8'-0"	PERCHES
1	2x2	8'-0"	PERCHES
1	2x2	8'-0"	PERCHES
1	2x2	8'-0"	PERCHES
1	2x2	8'-0"	PERCHES
1	2x2	8'-0"	PERCHES
1	2x2	8'-0"	PERCHES

INSULATION ROOFING & WIRE NETTING		
PIECES	SIZE	DESCRIPTION & USE
6	4'x8'	INSULATION BOARD, FRONT WALL & NEST
17	4'x8'	INSULATION BOARD, ROOF WALLS & VENTS
5	4'x8'	INSULATION BOARD, ROOF
6	6'x8'	PEARL SCREEN OR TARED PAPER - INSULATION PROTECTION
3	2'x6'	2x4 SILLING FOR ROOF
2	4'x8'	2x4 SILLING FOR ROOF
1	2'x4'	1 MESH POULTRY NETTING FOR PERCHES
1	2'x4'	VALLEY TIN, VENTILATOR FLASHING
1	2'x4'	1 MESH HARDWARE CLOTH, INTAKE OPENINGS

WINDOWS		
NUMBER	SIZE	DESCRIPTION & USE
6	2' LIGHT 10' X 12'	BARN BASHES - FRONT WINDOWS
3	13' LIGHT 10' X 12'	CELLAR BASHES - REAR WINDOWS

HINGES & LOCK		
NUMBER	SIZE	DESCRIPTION & USE
1 PAIR	3"	T HINGE - HEAVY DOOR
1 PAIR	3"	T HINGE - UPPER FRONT WINDOWS
1 PAIR	3"	STRAP HINGE - VENTILATOR DOORS
2 PAIR	4"	STRAP HINGE - PERCHES
1	2"	DOOR LATCH WITH PADLOCK PLATE

NAILS		
QTY	SIZE	DESCRIPTION & USE
15	16 d	COMMON NAILS - FOR FRAMING
20	8 d	COMMON NAILS - FOR ROOF BOARDS & FRAMING
20	8 d	BOX NAILS - FOR SIDING & TRIM
5	6 d	BOX NAILS - FOR SIDING & DOOR FRAMING
15	8 d	1/4 HEAD GALVANIZED NAILS - FOR INSULATION, VENTILATOR
5	1/2"	1/4 HEAD GALVANIZED NAILS - FOR INSULATION TO SIDING
1	1/2"	GALVANIZED POULTRY NETTING STRAP HINGE FOR PERCHES & INTAKE

COOPERATIVE EXTENSION WORK IN
AGRICULTURE AND HOME ECONOMICS
STATE OF NORTH DAKOTA
NORTH DAKOTA AGRICULTURAL COLLEGE
AND
U. S. DEPT. OF AGRICULTURE COOPERATING
EXT. AGR'L ENGINEER - FARGO, N. DAK.
SHED ROOF POULTRY HOUSE
MIDWEST 17123 131 E. X. 5306 SHEET 2 OF 2