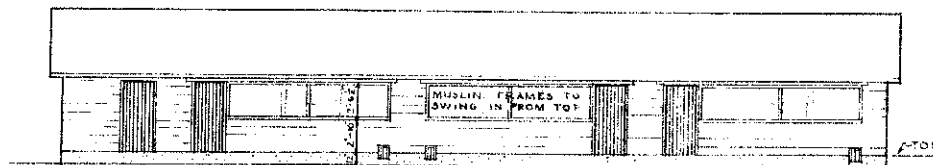
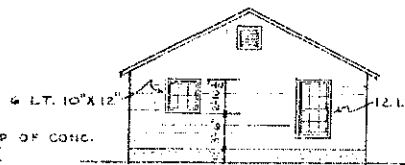


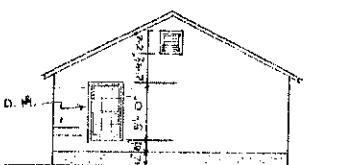
FLOOR PLAN
SCALE $\frac{1}{4}'' = 1'-0''$



FRONT

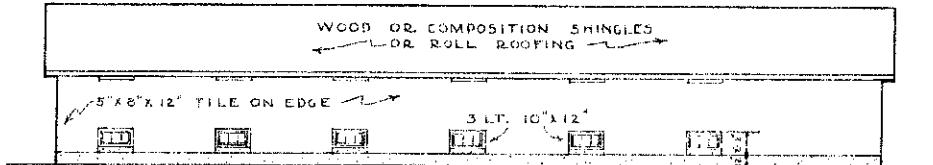


SIDE



SIDE

ELEVATIONS
SCALE $\frac{1}{8}'' = 1'-0''$



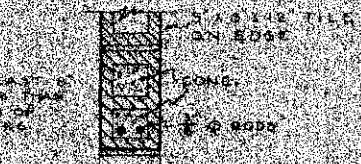
REAR

NOTE: $\frac{1}{2}''$ MORTAR JOINTS ASSUMED THROUGHOUT. DIMENSIONS VARY WITH JOINT

COOPERATIVE EXTENSION WORK IN
 AGRICULTURE AND HOME ECONOMICS
 STATE OF NORTH DAKOTA
 NORTH DAKOTA AGRICULTURAL COLLEGE
 AND
 U. S. DEPT. OF AGRICULTURE COOPERATING
 EXT. AGR'L ENGINEER—FARGO, N. DAK.
STRAW LOFT POULTRY HOUSE
 MIDWEST 72714 333 EX 5298 SHEET 1 OF 3

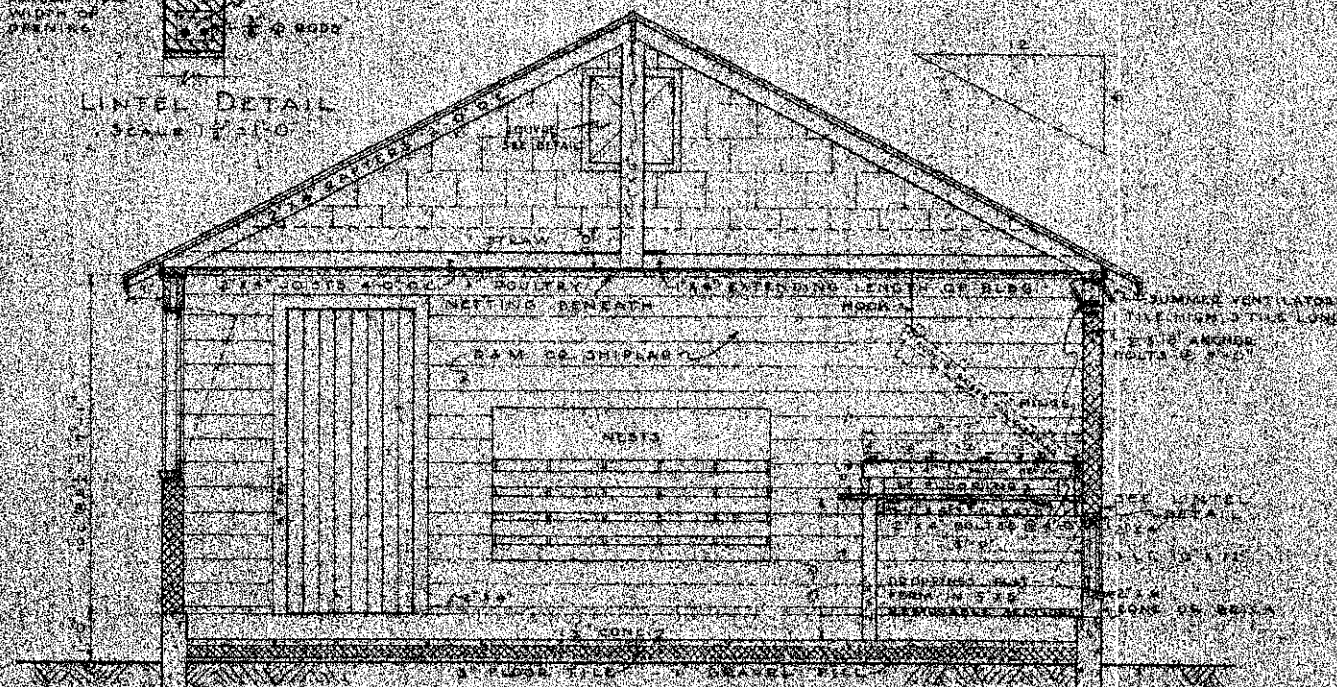
BILL OF MATERIAL

NO	REQ	SIZE	GRADE	REMARKS
1	1.00	4.00	CONCRETE	CONCRETE FOOTING
2	1.00	4.00	CONCRETE	CONCRETE FLOOR
3	1.00	4.00	CONCRETE	CONCRETE
4	1.00	4.00	CONCRETE	CONCRETE
5	1.00	4.00	CONCRETE	CONCRETE
6	1.00	4.00	CONCRETE	CONCRETE
7	1.00	4.00	CONCRETE	CONCRETE
8	1.00	4.00	CONCRETE	CONCRETE
9	1.00	4.00	CONCRETE	CONCRETE
10	1.00	4.00	CONCRETE	CONCRETE
11	1.00	4.00	CONCRETE	CONCRETE
12	1.00	4.00	CONCRETE	CONCRETE
13	1.00	4.00	CONCRETE	CONCRETE
14	1.00	4.00	CONCRETE	CONCRETE
15	1.00	4.00	CONCRETE	CONCRETE
16	1.00	4.00	CONCRETE	CONCRETE
17	1.00	4.00	CONCRETE	CONCRETE
18	1.00	4.00	CONCRETE	CONCRETE
19	1.00	4.00	CONCRETE	CONCRETE
20	1.00	4.00	CONCRETE	CONCRETE
21	1.00	4.00	CONCRETE	CONCRETE
22	1.00	4.00	CONCRETE	CONCRETE
23	1.00	4.00	CONCRETE	CONCRETE
24	1.00	4.00	CONCRETE	CONCRETE
25	1.00	4.00	CONCRETE	CONCRETE
26	1.00	4.00	CONCRETE	CONCRETE
27	1.00	4.00	CONCRETE	CONCRETE
28	1.00	4.00	CONCRETE	CONCRETE
29	1.00	4.00	CONCRETE	CONCRETE
30	1.00	4.00	CONCRETE	CONCRETE
31	1.00	4.00	CONCRETE	CONCRETE
32	1.00	4.00	CONCRETE	CONCRETE
33	1.00	4.00	CONCRETE	CONCRETE
34	1.00	4.00	CONCRETE	CONCRETE
35	1.00	4.00	CONCRETE	CONCRETE
36	1.00	4.00	CONCRETE	CONCRETE
37	1.00	4.00	CONCRETE	CONCRETE
38	1.00	4.00	CONCRETE	CONCRETE
39	1.00	4.00	CONCRETE	CONCRETE
40	1.00	4.00	CONCRETE	CONCRETE
41	1.00	4.00	CONCRETE	CONCRETE
42	1.00	4.00	CONCRETE	CONCRETE
43	1.00	4.00	CONCRETE	CONCRETE
44	1.00	4.00	CONCRETE	CONCRETE
45	1.00	4.00	CONCRETE	CONCRETE
46	1.00	4.00	CONCRETE	CONCRETE
47	1.00	4.00	CONCRETE	CONCRETE
48	1.00	4.00	CONCRETE	CONCRETE
49	1.00	4.00	CONCRETE	CONCRETE
50	1.00	4.00	CONCRETE	CONCRETE
51	1.00	4.00	CONCRETE	CONCRETE
52	1.00	4.00	CONCRETE	CONCRETE
53	1.00	4.00	CONCRETE	CONCRETE
54	1.00	4.00	CONCRETE	CONCRETE
55	1.00	4.00	CONCRETE	CONCRETE
56	1.00	4.00	CONCRETE	CONCRETE
57	1.00	4.00	CONCRETE	CONCRETE
58	1.00	4.00	CONCRETE	CONCRETE
59	1.00	4.00	CONCRETE	CONCRETE
60	1.00	4.00	CONCRETE	CONCRETE
61	1.00	4.00	CONCRETE	CONCRETE
62	1.00	4.00	CONCRETE	CONCRETE
63	1.00	4.00	CONCRETE	CONCRETE
64	1.00	4.00	CONCRETE	CONCRETE
65	1.00	4.00	CONCRETE	CONCRETE
66	1.00	4.00	CONCRETE	CONCRETE
67	1.00	4.00	CONCRETE	CONCRETE
68	1.00	4.00	CONCRETE	CONCRETE
69	1.00	4.00	CONCRETE	CONCRETE
70	1.00	4.00	CONCRETE	CONCRETE
71	1.00	4.00	CONCRETE	CONCRETE
72	1.00	4.00	CONCRETE	CONCRETE
73	1.00	4.00	CONCRETE	CONCRETE
74	1.00	4.00	CONCRETE	CONCRETE
75	1.00	4.00	CONCRETE	CONCRETE
76	1.00	4.00	CONCRETE	CONCRETE
77	1.00	4.00	CONCRETE	CONCRETE
78	1.00	4.00	CONCRETE	CONCRETE
79	1.00	4.00	CONCRETE	CONCRETE
80	1.00	4.00	CONCRETE	CONCRETE
81	1.00	4.00	CONCRETE	CONCRETE
82	1.00	4.00	CONCRETE	CONCRETE
83	1.00	4.00	CONCRETE	CONCRETE
84	1.00	4.00	CONCRETE	CONCRETE
85	1.00	4.00	CONCRETE	CONCRETE
86	1.00	4.00	CONCRETE	CONCRETE
87	1.00	4.00	CONCRETE	CONCRETE
88	1.00	4.00	CONCRETE	CONCRETE
89	1.00	4.00	CONCRETE	CONCRETE
90	1.00	4.00	CONCRETE	CONCRETE
91	1.00	4.00	CONCRETE	CONCRETE
92	1.00	4.00	CONCRETE	CONCRETE
93	1.00	4.00	CONCRETE	CONCRETE
94	1.00	4.00	CONCRETE	CONCRETE
95	1.00	4.00	CONCRETE	CONCRETE
96	1.00	4.00	CONCRETE	CONCRETE
97	1.00	4.00	CONCRETE	CONCRETE
98	1.00	4.00	CONCRETE	CONCRETE
99	1.00	4.00	CONCRETE	CONCRETE
100	1.00	4.00	CONCRETE	CONCRETE

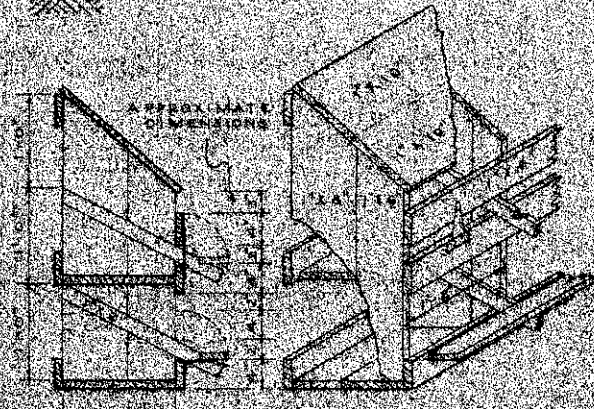


LINTEL DETAIL
SCALE 1/2" = 1'-0"

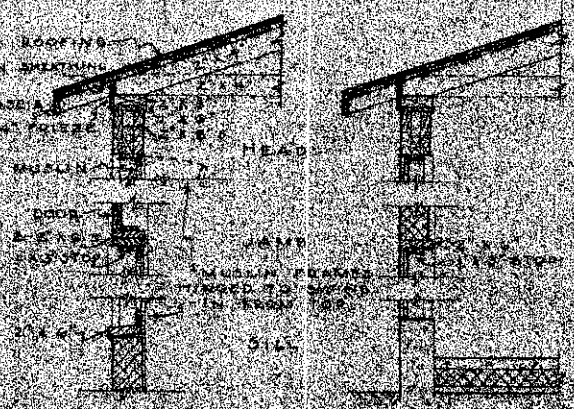
NETS & MORTAR
JOINTS ASSUMED
SEE SHEET



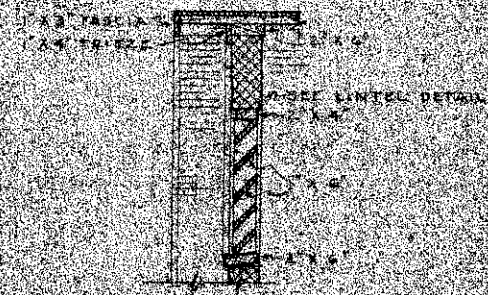
SECTION
SCALE 1/2" = 1'-0"



DETAIL OF NESTS
SCALE 1/2" = 1'-0"

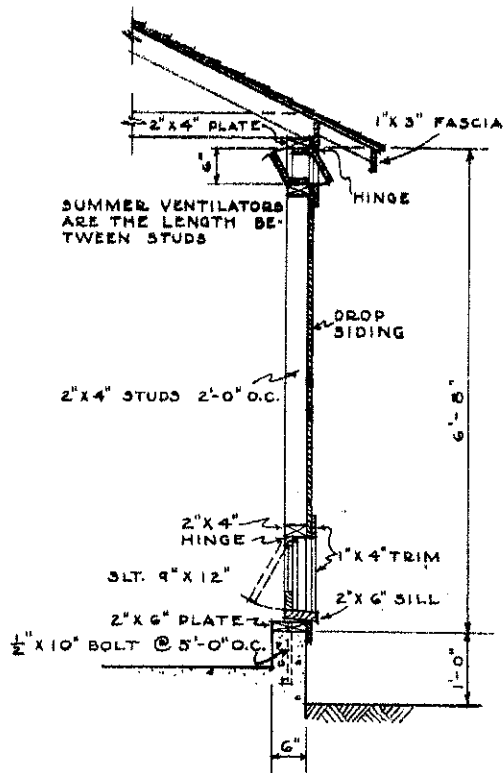


FRONT OPENING DETAILS
SCALE 1/2" = 1'-0"

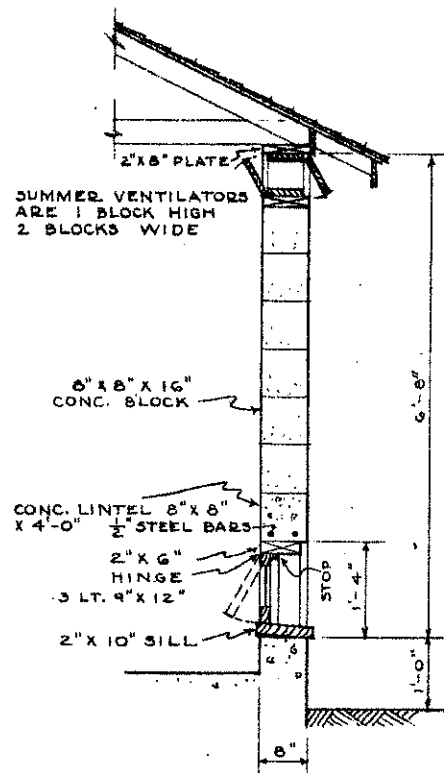


DETAIL OF LOUVRE
SCALE 1/2" = 1'-0"

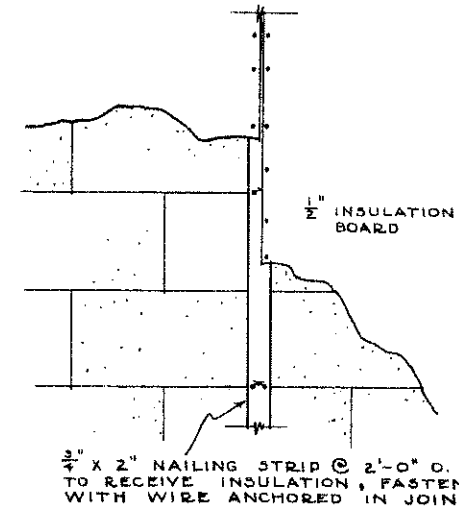
CORPORATIVE EXTENSION WORK IN
AGRICULTURE AND HOME ECONOMICS
STATE OF NORTH DAKOTA
NORTH DAKOTA AGRICULTURAL COLLEGE
A PART OF ASSISTANCE GRANTED BY
EXT. AGR. ENGINEER, PARS. 2124
JOHN LOFT, POULTRY HOUSE
DESIGNED BY JOHN LOFT



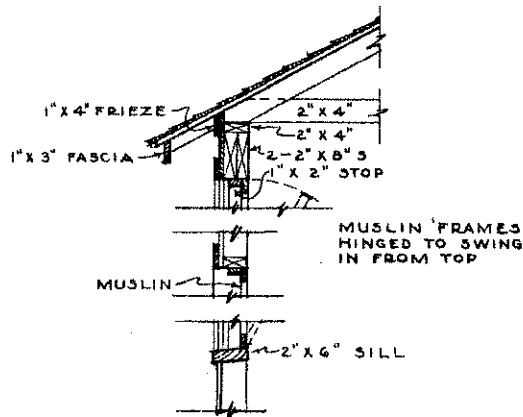
BACK WALL DETAIL



BACK WALL DETAIL

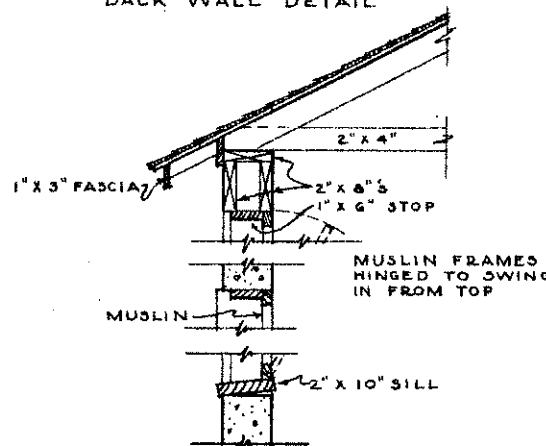


MASONRY WALL INSULATION DETAIL
SCALE $1\frac{1}{2}'' = 1'-0''$



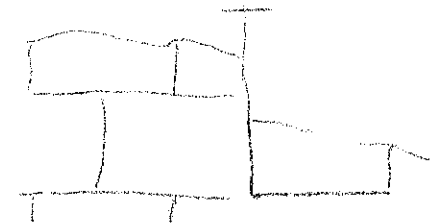
FRAMING FOR FRONT OPENINGS

FRAME WALL DETAILS
SCALE $\frac{3}{4}'' = 1'-0''$



FRAMING FOR FRONT OPENINGS

CONCRETE BLOCK WALL DETAILS
SCALE $\frac{3}{4}'' = 1'-0''$



MASONRY WALL INSULATION DETAIL

COOPERATIVE EXTENSION WORK IN
AGRICULTURE AND HOME ECONOMICS
STATE OF NORTH DAKOTA
NORTH DAKOTA AGRICULTURAL COLLEGE
AND
U. S. DEPT. OF AGRICULTURE COOPERATING
EXT. AGR'L. ENGINEER - FARGO, N. DAK.

STRAW LOFT POULTRY HOUSE
PLATE 2274 - 231 EX. 5301 INSET 3, 4