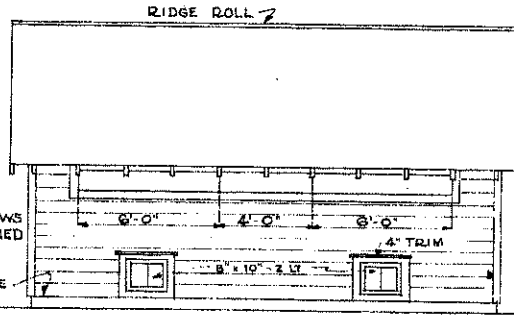
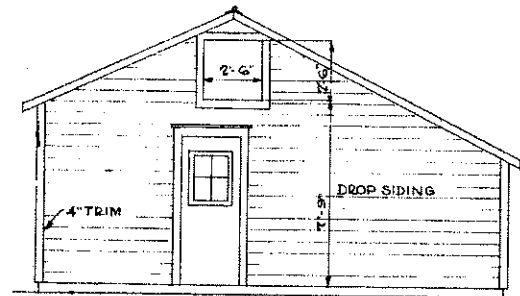




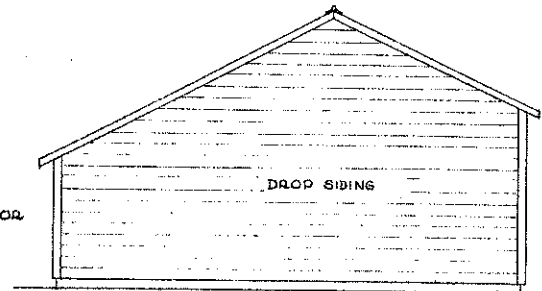
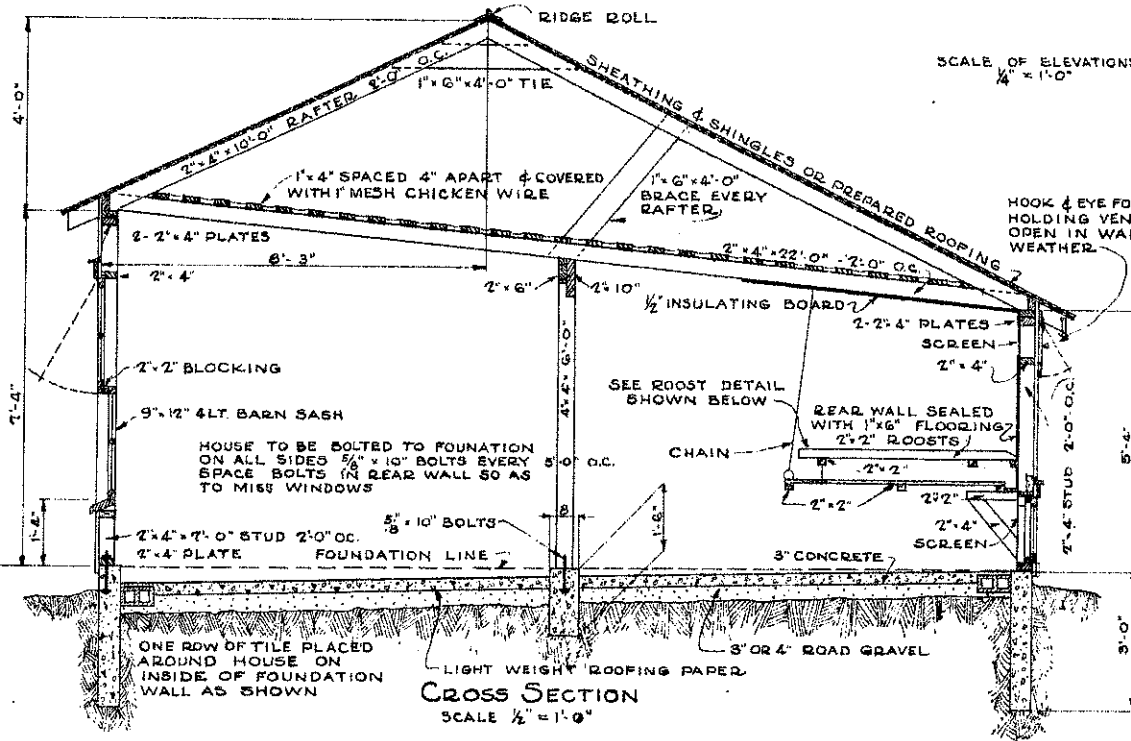
SOUTH ELEVATION



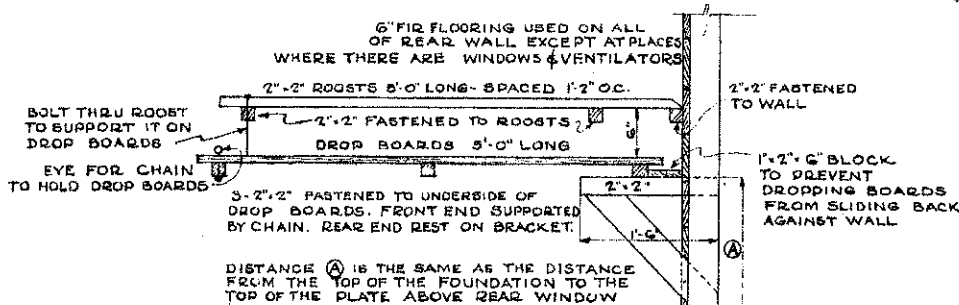
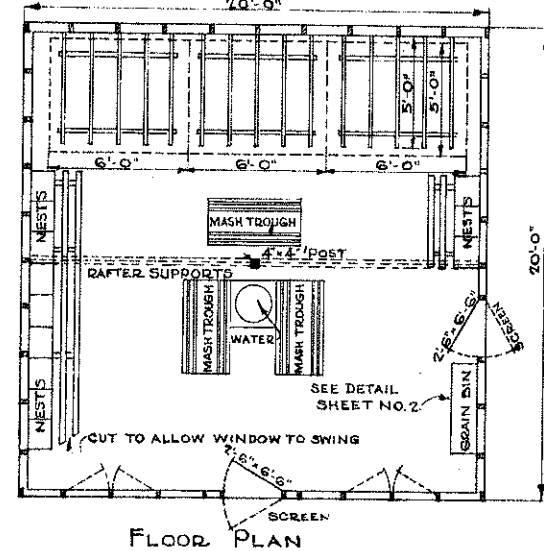
NORTH ELEVATION



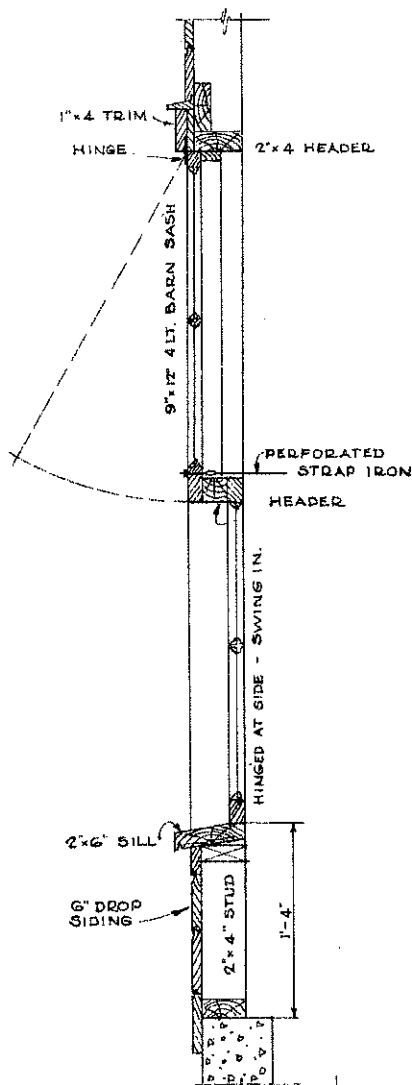
EAST ELEVATION



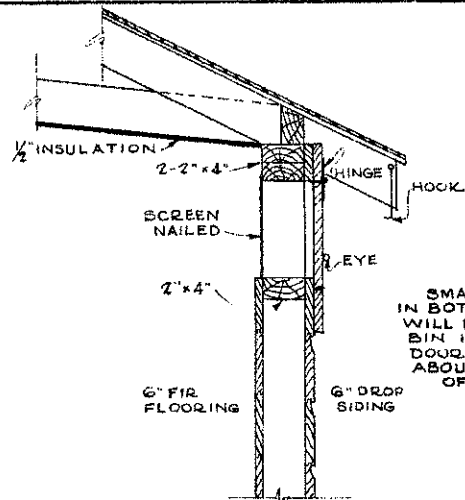
WEST ELEVATION



COOPERATIVE EXTENSION WORK IN
AGRICULTURE AND HOME ECONOMICS
STATE OF NORTH DAKOTA
NORTH DAKOTA AGRICULTURAL COLLEGE
AND
U. S. DEPT. OF AGRICULTURE COOPERATING
EXT. ACRL. ENGINEER—FARGO, N. DAK.
STRAW LOG POULTRY HOUSE
MIDWEST 72913-53 EX. 5,007 SHEET 1 OF 2

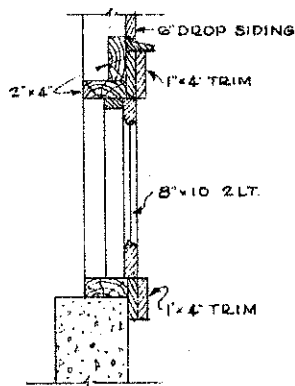


CROSS SECTION THRU FRONT WINDOWS

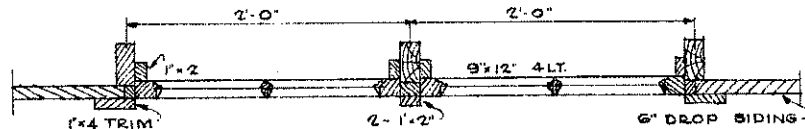


DETAIL REAR VENTILATOR

SMALL SLIDING DOOR IN BOTTOM OF GRAIN BIN WILL BE OF USE WHEN BIN IS CLEANED. DOOR SHOULD BE ABOUT THE CENTER OF THE BIN.

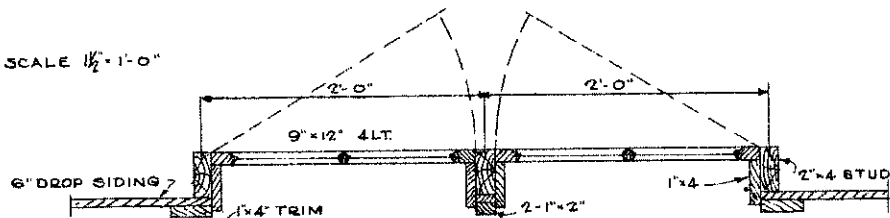


DETAIL REAR WINDOW

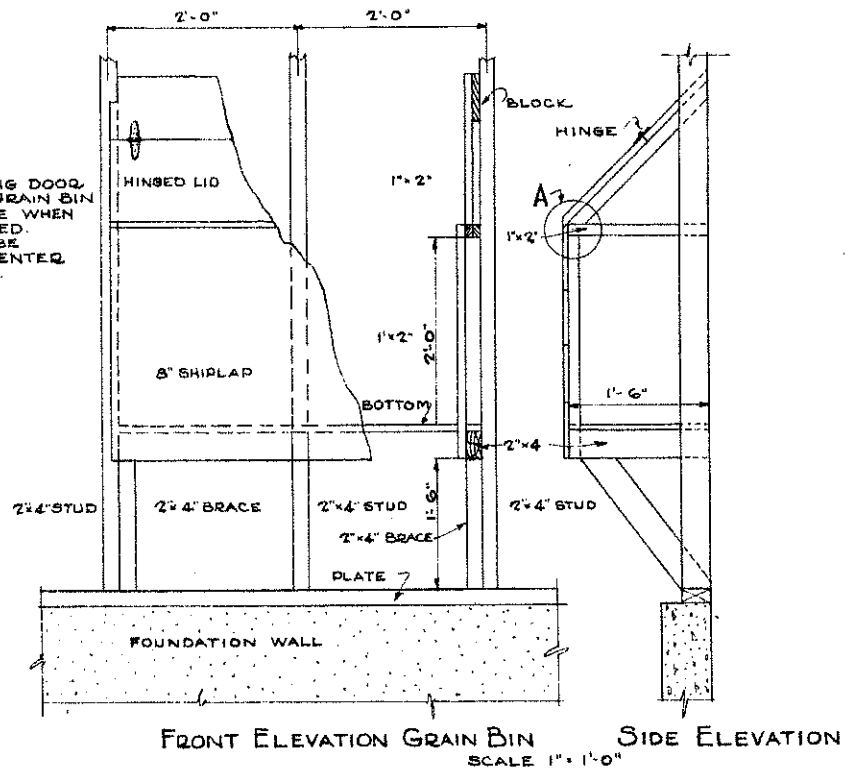


SECTION THRU UPPER WINDOWS HINGED AT TOP TO SWING OUT

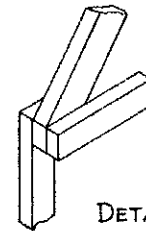
SCALE 1/2" = 1'-0"



SECTION THRU LOWER WINDOWS HINGED AT SIDE TO SWING IN



FRONT ELEVATION GRAIN BIN SIDE ELEVATION SCALE 1" = 1'-0"



DETAIL OF A

COOPERATIVE EXTENSION WORK IN
 AGRICULTURE AND HOME ECONOMICS
 STATE OF NORTH DAKOTA
 NORTH DAKOTA AGRICULTURAL COLLEGE
 AND
 U. S. DEPT. OF AGRICULTURE COOPERATING
 EXT. AGR'L. ENGINEER- FARGO, N. DAK.
 STRAW LOFT POULTRY HOUSE
 MILWAUKEE ST 777, 3 '33 1 X 52 9R SHEET 3 OF 3