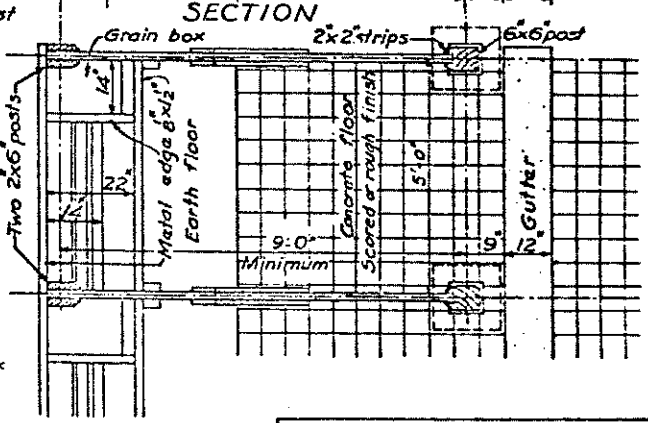
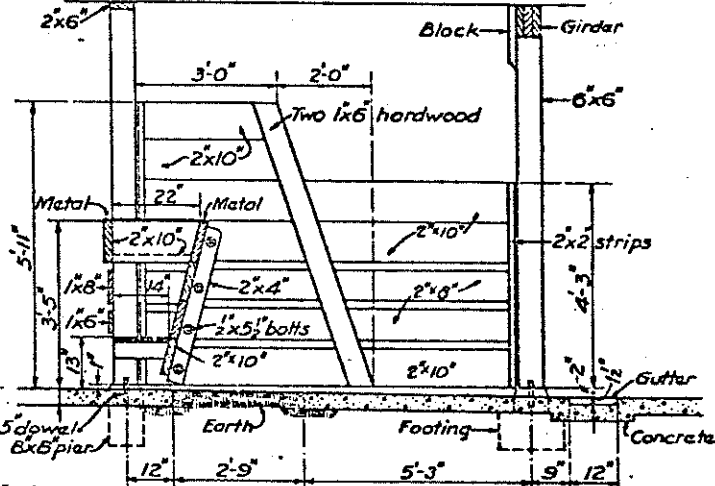
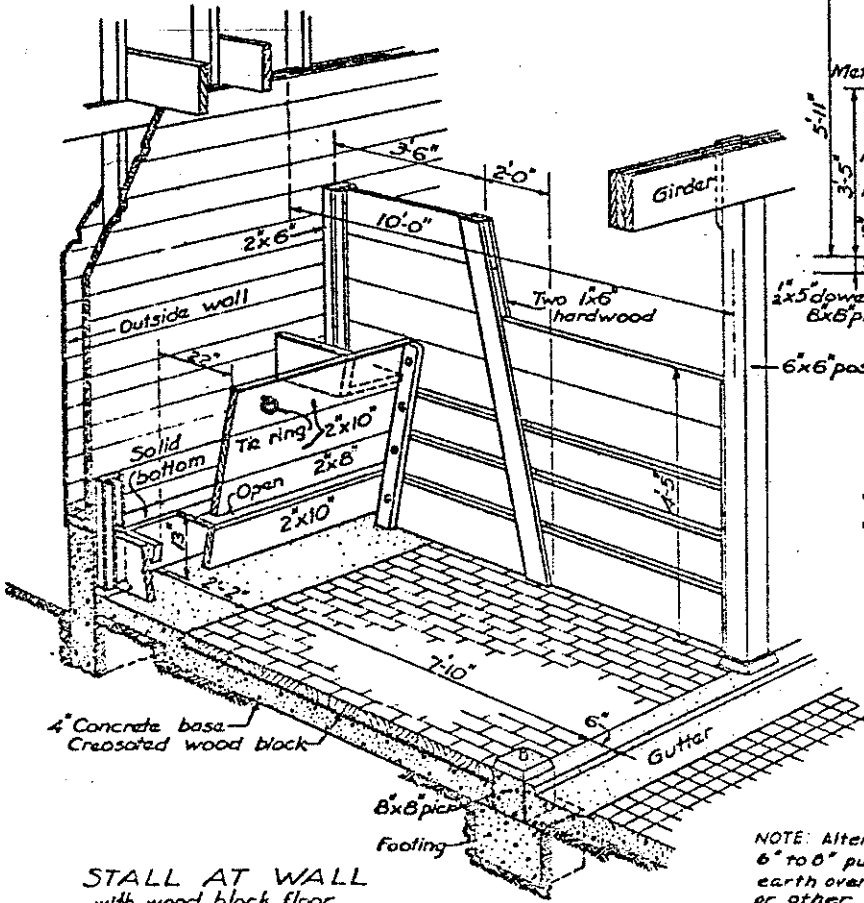


NOTE: For dimensions see plans and sections below. See barn floor plans for spacing and size of column footings, also girders.



PLAN

NOTE: Alternate floor may be 6" to 8" puddled clay or stabilized earth over 6" to 8" of gravel, cinders, or other porous fill.

U. S. DEPARTMENT OF AGRICULTURE BUREAU OF AGRICULTURAL ENGINEERING	
DIVISION OF STRUCTURES	
HORSE STALLS	
Drawn by: G.E. JS	CHECKED
Traced by: A.B.	SHEET 1 of 1 SHEETS
Approved: _____	SERIAL NO. 3175