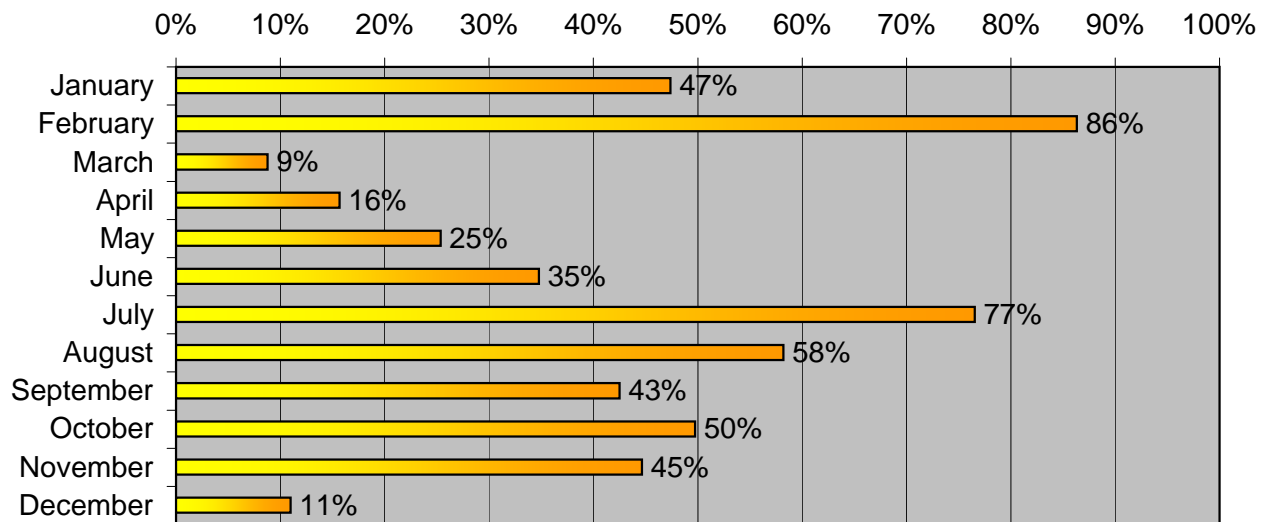


Web Statistics for Dickinson Research Extension Center Web Site
<http://www.ag.ndsu.nodak.edu/dickinsol/>

| | Hits in 2004 | Hits in 2005 | % Increase from 2004 to 2005 |
|--------------|-----------------|-----------------|---------------------------------|
| January | 34253 | 50483 | 47% |
| February | 26583 | 49530 | 86% |
| March | 43032 | 46811 | 9% |
| April | 43552 | 50383 | 16% |
| May | 43182 | 54134 | 25% |
| June | 39028 | 52598 | 35% |
| July | 32741 | 57797 | 77% |
| August | 41542 | 65720 | 58% |
| September | 46093 | 65690 | 43% |
| October | 48757 | 73004 | 50% |
| November | 48083 | 69548 | 45% |
| December | 51872 | 57574 | 11% |
| Total | 500,722 | 695,277 | 39% |

Percent Increase 2004 to 2005

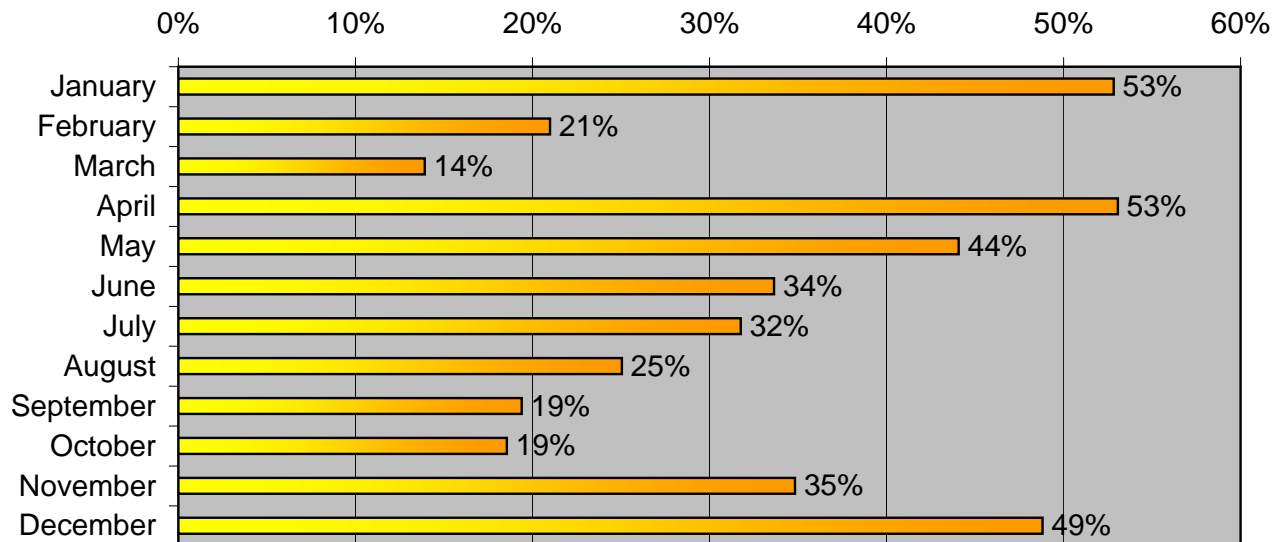


Web Statistics for the CHAPS 2000 Web Site

<http://www.chaps2000.org>

| | Hits in 2004 | Hits in 2005 | % Increase from 2004 to 2005 |
|--------------|-----------------|-----------------|---------------------------------|
| January | 24211 | 37002 | 53% |
| February | 33245 | 40224 | 21% |
| March | 35804 | 40787 | 14% |
| April | 20353 | 31154 | 53% |
| May | 19604 | 28245 | 44% |
| June | 20492 | 27387 | 34% |
| July | 20187 | 26600 | 32% |
| August | 25082 | 31365 | 25% |
| September | 27055 | 32302 | 19% |
| October | 34162 | 40499 | 19% |
| November | 32759 | 44170 | 35% |
| December | 26713 | 39752 | 49% |
| Total | 321,671 | 421,492 | 31% |

Percent Increase 2004 to 2005



Web Statistics for the BeefTalk Web Site

<http://www.beef-talk.com>

| | Hits in 2004 | Hits in 2005 | % Increase from 2004 to 2005 |
|--------------|-----------------|-----------------|---------------------------------|
| January | 12611 | 21403 | 70% |
| February | 14043 | 20794 | 48% |
| March | 12996 | 23254 | 79% |
| April | 14727 | 22504 | 53% |
| May | 15166 | 23370 | 54% |
| June | 13923 | 16864 | 21% |
| July | 14267 | 19281 | 35% |
| August | 15771 | 23598 | 50% |
| September | 15900 | 25001 | 57% |
| October | 16591 | 24781 | 49% |
| November | 13639 | 26181 | 92% |
| December | 13374 | 20665 | 55% |
| Total | 175,012 | 269,701 | 54% |

Percent Increase 2004 to 2005

