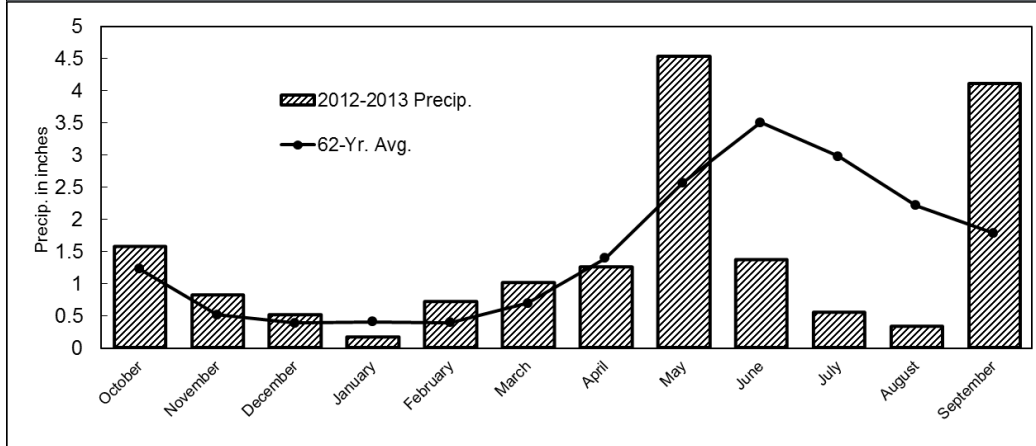


Monthly Precipitation for the 2012-2013 Crop Year at CGREC

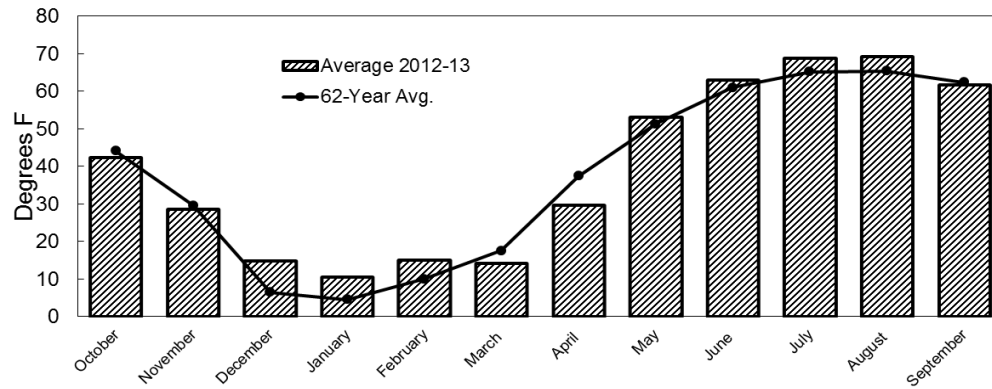


Month	2012-13 Precipitation (inches)	62-year Average Precipitation (inches)	Deviation From Average (inches)	2012-13 Accumulated Precipitation (inches)	Accumulated 62-year Average Precipitation (inches)	2012-13 Percent 62-year Accumulated Average
October	1.58	1.23	0.35	1.58	1.23	128.89
November	0.82	0.52	0.31	2.40	1.74	137.87
December	0.51	0.39	0.12	2.91	2.13	136.44
January	0.17	0.41	-0.24	3.08	2.54	121.31
February	0.72	0.40	0.32	3.80	2.93	129.51
March	1.01	0.70	0.31	4.81	3.63	132.53
April	1.25	1.40	-0.15	6.06	5.03	120.55
May	4.54	2.57	1.97	10.60	7.60	139.49
June	1.37	3.51	-2.14	11.97	11.10	107.80
July	0.55	2.98	-2.43	12.52	14.08	88.89
August	0.33	2.22	-1.89	12.85	16.30	78.82
September	4.12	1.79	2.33	16.97	18.09	93.80
Total	16.97	18.09	-1.12	16.97	18.09	93.80

Total snow depth in reporting period: 63.7 inches

Note: A graph of the monthly precipitation for the period 2010 through 2013 is located on page 48.

Average Monthly Temperatures for the 2012-2013 Crop Year at CGREC



Month	2012-13 Maximum Temperature (degrees F)	2012-13 Minimum Temperature (degrees F)	2012-13 Average Temperature (degrees F)	1951-2013 Average Temperature (degrees F)	2012-13 Deviation From 60-year Average (degrees F)
October	77	21	42.4	44.1	-1.7
November	61	3	28.5	29.6	-1.1
December	52	-13	14.8	6.5	8.3
January	41	-22	10.6	4.6	6.0
February	38	-22	15.1	10.0	5.1
March	43	-11	14.1	17.5	-3.4
April	69	3	29.7	37.4	-7.8
May	86	21	53.2	51.3	1.9
June	87	38	63.1	61.0	2.0
July	92	42	68.8	65.2	3.6
August	100	39	69.2	65.4	3.7
September	88	37	61.7	62.4	-0.7
Last spring frost: May 12, 2013 (27° F)			62-year average last spring frost: May 13		
First fall frost: Oct 7, 2013 (30°F)			62-year average first fall frost: Sept. 22		
148 frost-free days			62-Year average frost-free days: 132 days		