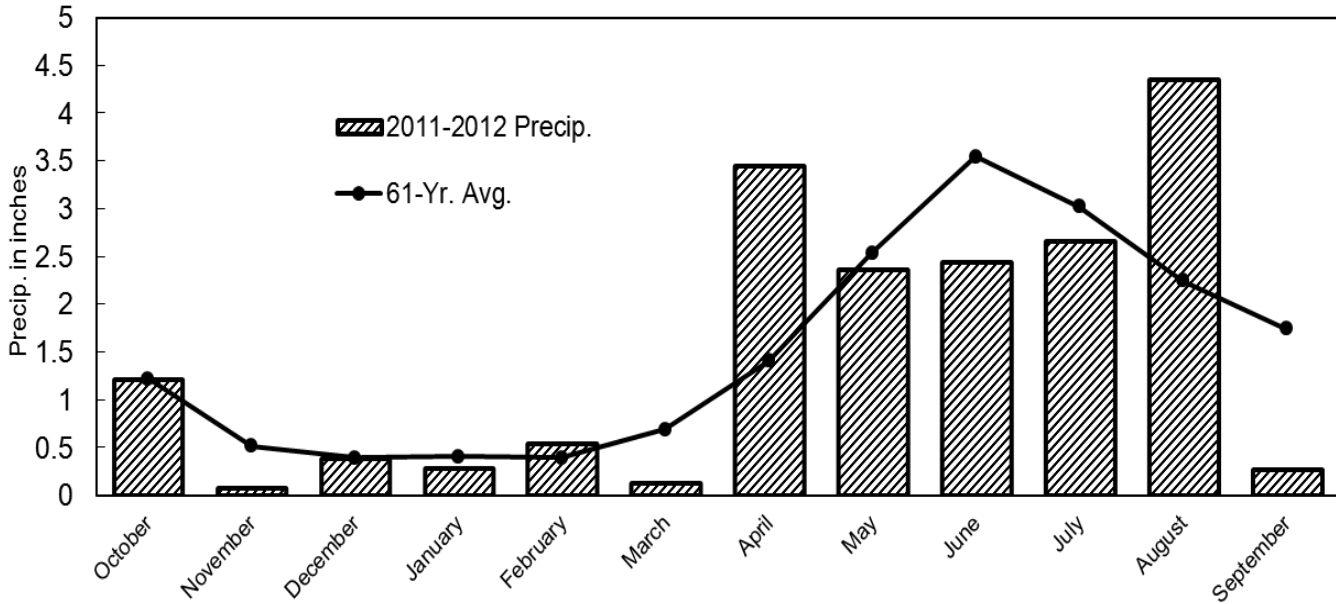


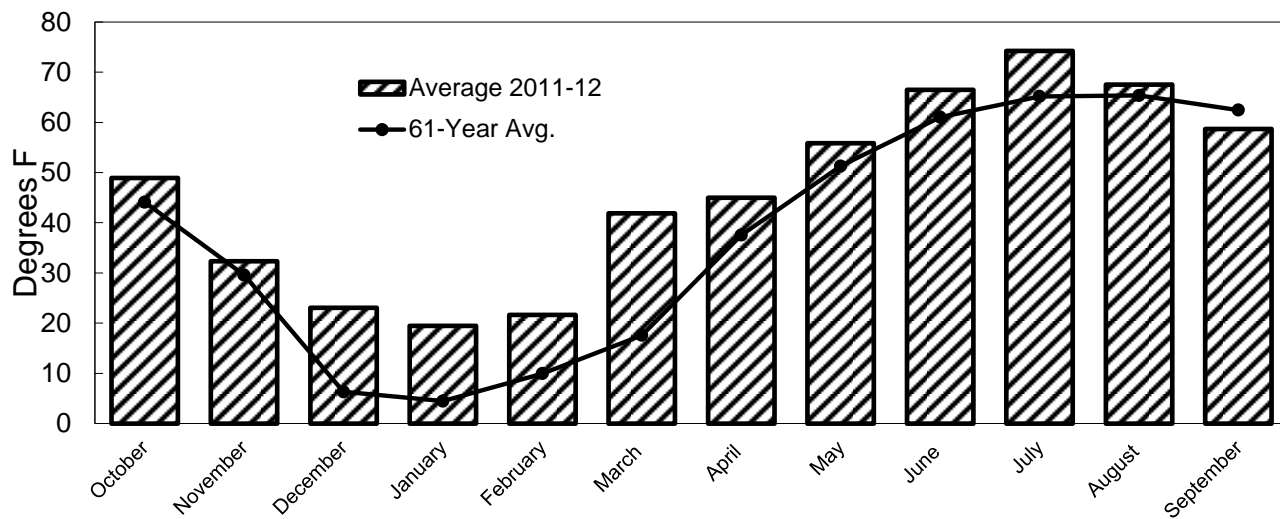
Monthly Precipitation for the 2011-2012 Crop Year at CGREC



Month	2011-12 precipitation (inches)	61-year average precipitation (inches)	Deviation from average (inches)	2011-12 accumulated precipitation (inches)	Accumulated 61-year average precipitation (inches)	2011-12 percent 61-year accumulated average
October	1.22	1.22	0.00	1.22	1.22	100.00
November	0.08	0.51	-0.43	1.30	1.73	75.02
December	0.39	0.39	0.00	1.69	2.12	79.61
January	0.29	0.41	-0.12	1.98	2.53	78.24
February	0.55	0.39	0.16	2.53	2.92	86.54
March	0.13	0.69	-0.56	2.66	3.61	73.60
April	3.45	1.40	2.05	6.11	5.01	121.76
May	2.37	2.54	-0.17	8.48	7.55	112.24
June	2.44	3.54	-1.10	10.92	11.9	98.40
July	2.66	3.02	-0.36	13.58	14.11	96.17
August	4.36	2.25	2.11	17.94	16.36	109.62
September	0.27	1.75	-1.48	18.21	18.11	100.54
Total	18.21	18.11	0.10	18.21	18.11	100.54

Total inches of snow in reporting period = 23.4

Average Monthly Temperatures for the 2011-2012 Crop Year at CGREC



Month	2011-12 maximum temperature (deg. F)	2011-12 minimum temperature (deg. F)	2011-12 average temperature (deg. F)	1951-2012 average temperature (deg. F)	2011-12 deviation from 60-year average (deg. F)
October	85	21	48.9	44.1	4.8
November	64	1	32.4	29.6	2.8
December	53	-6	23.1	6.3	16.7
January	54	-18	19.5	4.5	15.0
February	49	-11	21.7	10.0	11.7
March	80	11	41.9	17.6	24.3
April	81	14	45.0	37.5	7.5
May	85	34	55.9	51.3	4.5
June	87	40	66.5	61.0	5.4
July	100	53	74.2	65.2	9.0
August	95	45	67.5	65.4	2.1
September	92	28	58.7	62.4	-3.8

Last spring frost: April 27, 2012 (31° F)

First fall frost: Sept. 22, 2012 (28° F)

148 frost-free days

61-year average last spring frost: May 13

61-year average first fall frost: Sept. 22

61-year average frost-free days: 131