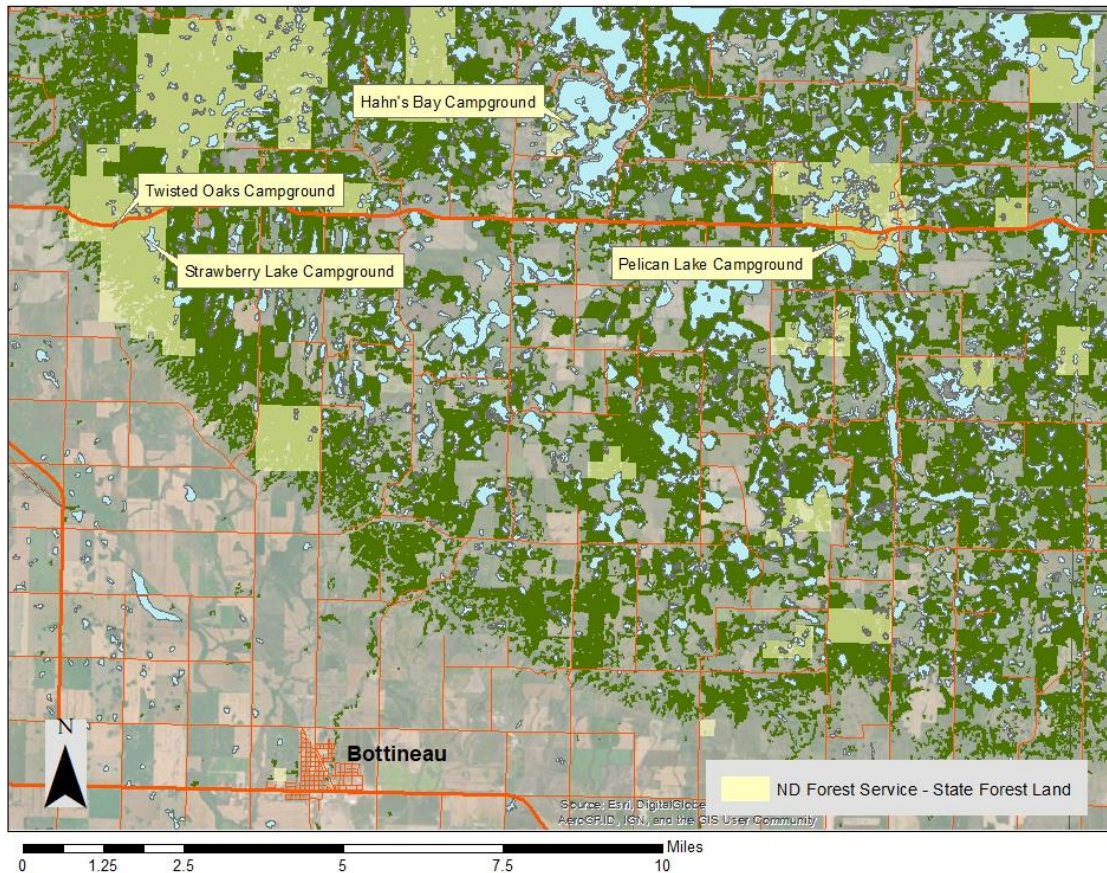


Camping on the State Forests

The North Dakota Forest Service manages 4 primitive campgrounds in the Turtle Mountains north of Bottineau ND. Campgrounds are located at Strawberry Lake, Twisted Oaks (Equestrian), Hahn's Bay on Lake Metigoshe, and Pelican Lake.

NDFS Campground Locations



Camping:

No fee is required for day use or backcountry camping where all supplies are carried in and all trash is carried out. Registration and a fee are required of all overnight campers staying at Twisted Oaks, Strawberry Lake, Hahn's Bay, and Pelican Lake. The campgrounds are open only to registered campers between the hours of 11 p.m. and 6 a.m.

Camping fees are \$15.00 per night in all campgrounds. An additional fee of \$5 per horse per night is required at the Twisted Oaks Equestrian Campground.

In designated campgrounds, quiet hours are from 11 p.m. and 6 a.m.

Camping in excess of 14 days and leaving equipment or campsites unattended for more than 24 hours is prohibited.

Any vehicle, equipment or camping supplies left unattended for more than 24 hours may be confiscated by the North Dakota Forest Service and held for a period of 30 days. At the end of this period said property may be disposed of by the North Dakota Forest Service.

Glass beverage containers are prohibited on all shorelines, docks, and boat ramps. All containers must be disposed of properly in trash containers.

Firewood is available for a nominal fee in the developed campgrounds.

Pets:

Pets are allowed provided they are kept on a leash and personally attended at all times. In mowed or maintained areas, owners must clean up after their pets.

Organized Group Activities:

Organized group activities attended by more than 10 persons are prohibited without the permission of the State Forester.

Fires/Fireworks:

Lighting of fires is allowed in cooking grills and campground rings. Leaving fires unattended is prohibited. Lighting of any fire on the State Forests is subject to state and local restrictions during periods including county fire bans.

Fires must be completely extinguished before leaving.

The lighting of fireworks is prohibited on all State Forests unless authorized by the State Forester.



For Additional Information Contact:
North Dakota Forest Service
1037 Forestry Drive
Bottineau ND 58318
701.228.3700