

Input Costs for 2011

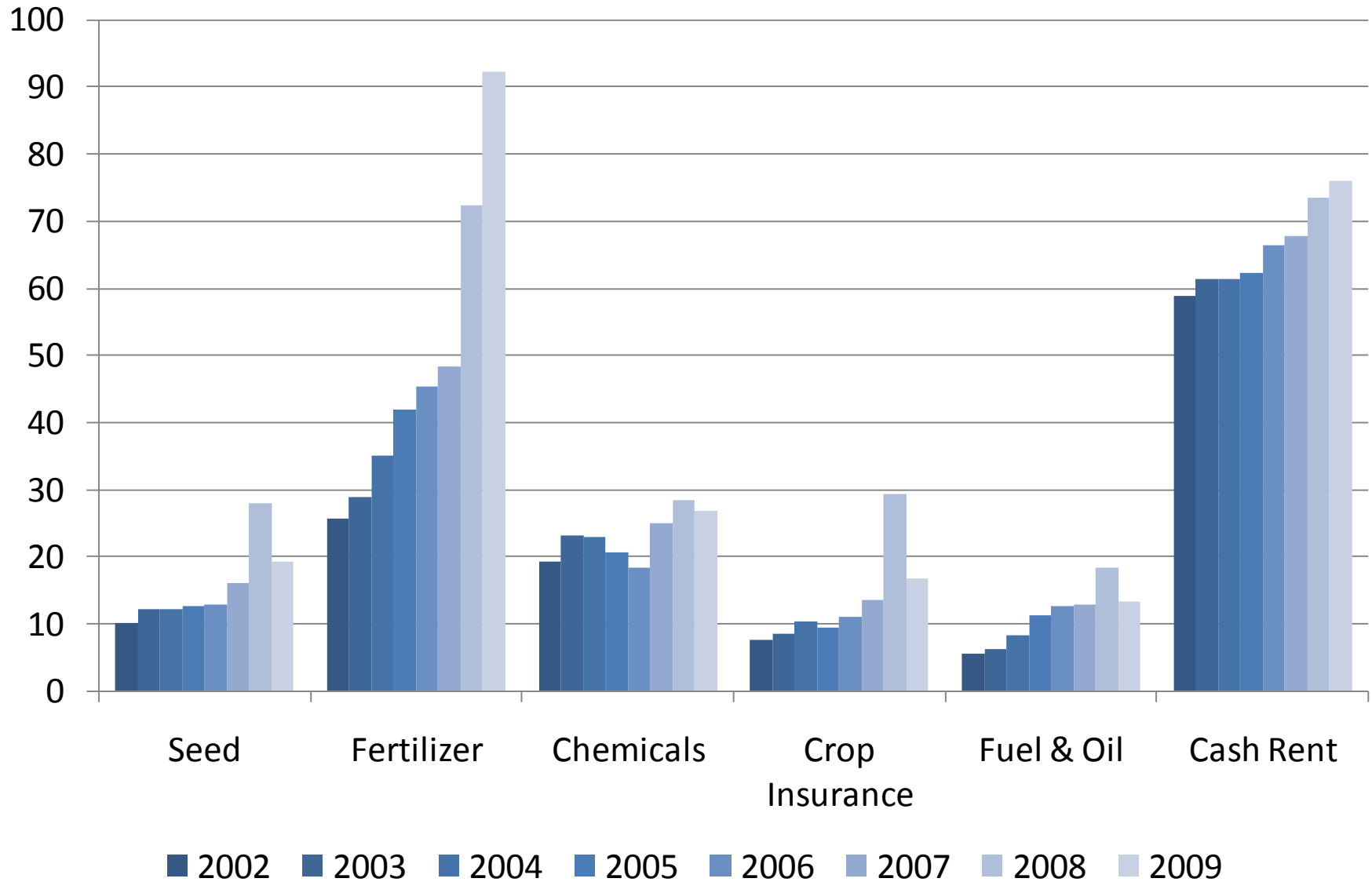
Andrew Swenson
Extension Farm Management Specialist
Department of Agribusiness and Applied
Economics
North Dakota State University

Generally,

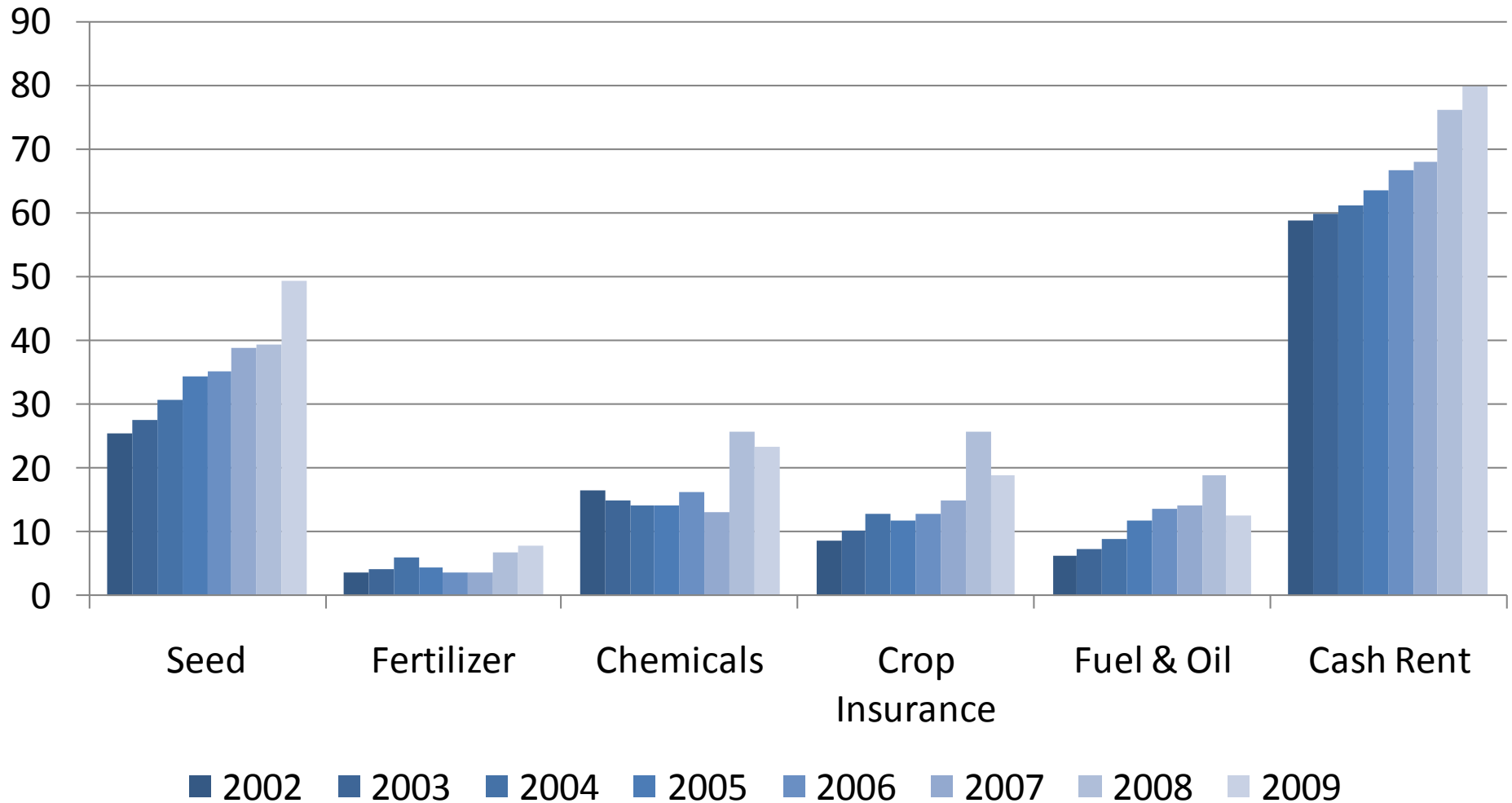
Costs trend with crop prices

Did crop prices and costs
peak in 2008?

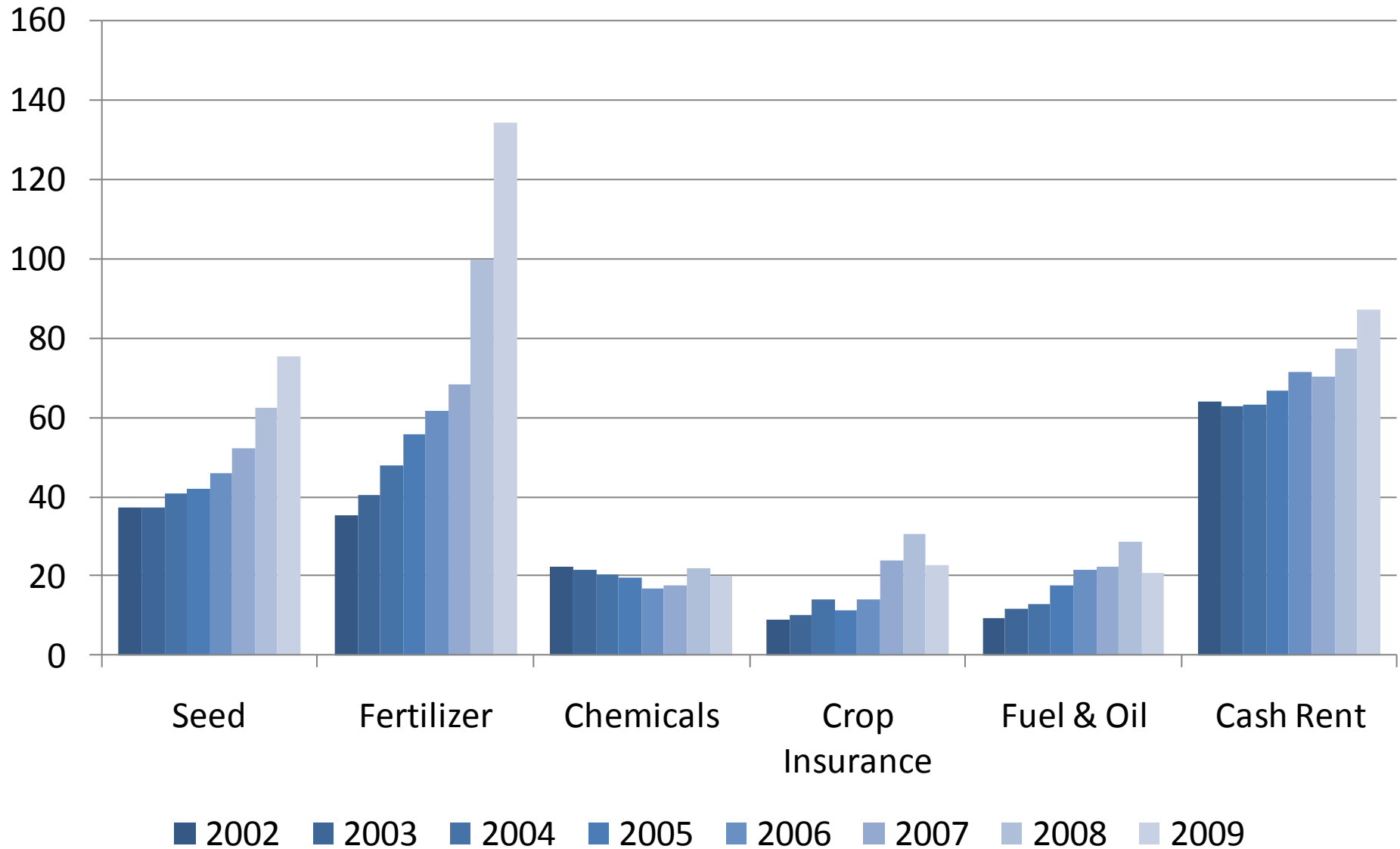
MN-ND RRV FBM, Selected Wheat Expenses



MN-ND RRV FBM, Selected Soybean Expenses



MN-ND RRV FBM, Selected Corn Expenses

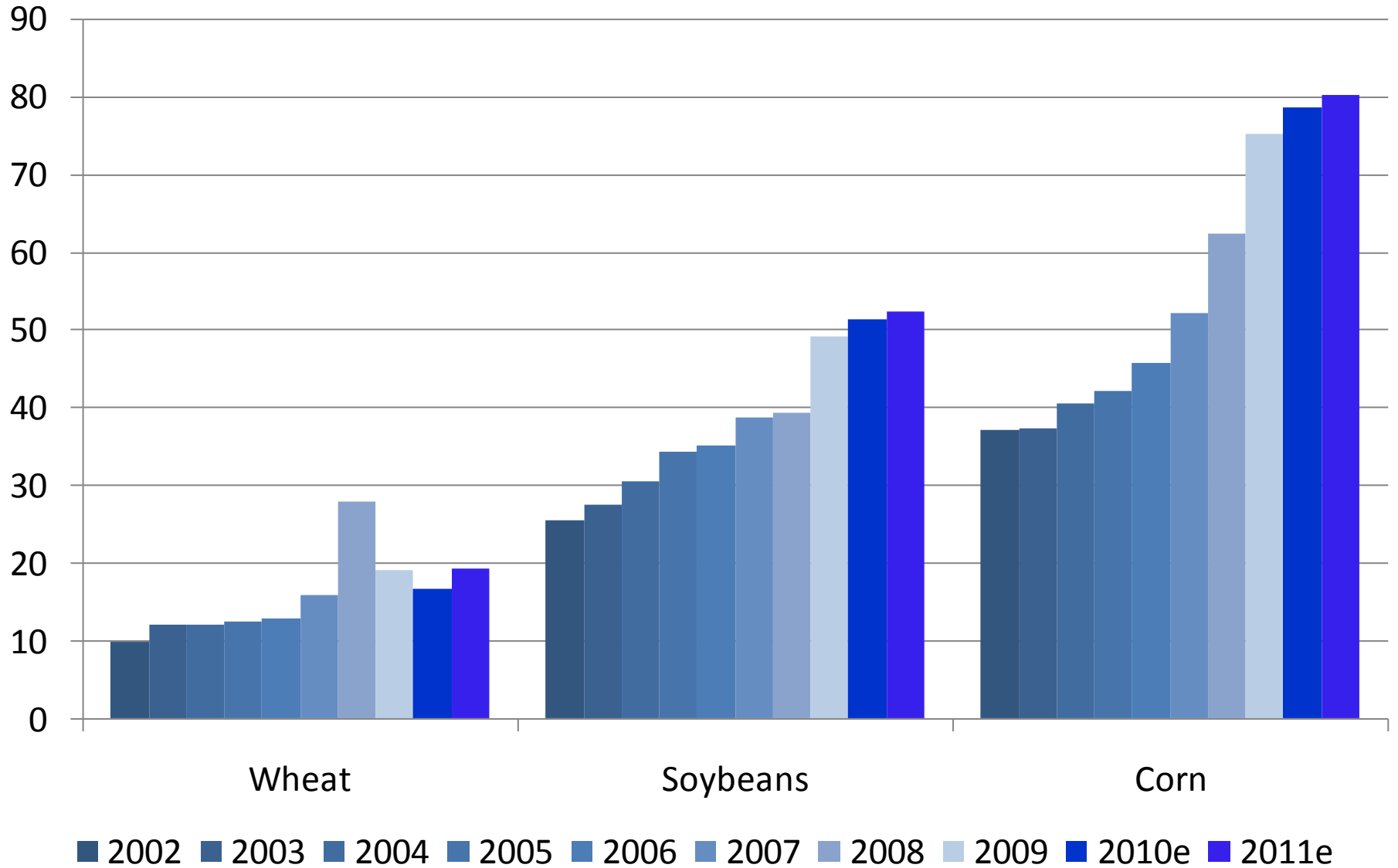


2011 Cost Projections

- Seed small grain up
 others fairly flat
- Fertilizer up 20%
- Fuel & lube up 5-10%
- Insurance up some
- Chemical flat
- Repair up some
- Other direct up some
- Cash rent up some
- Overhead up some

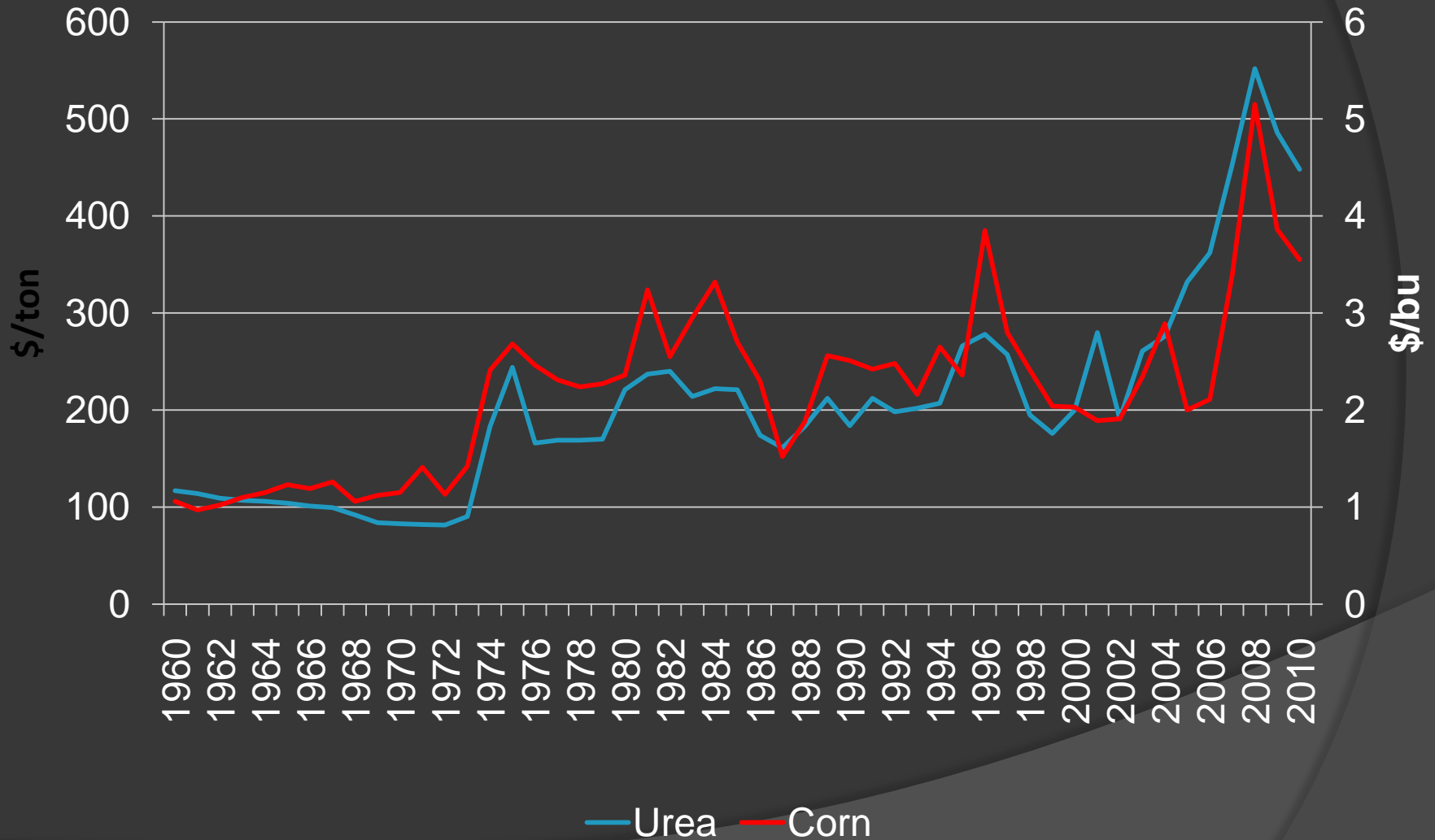
Seed Expenses

MN-ND RRV FBM



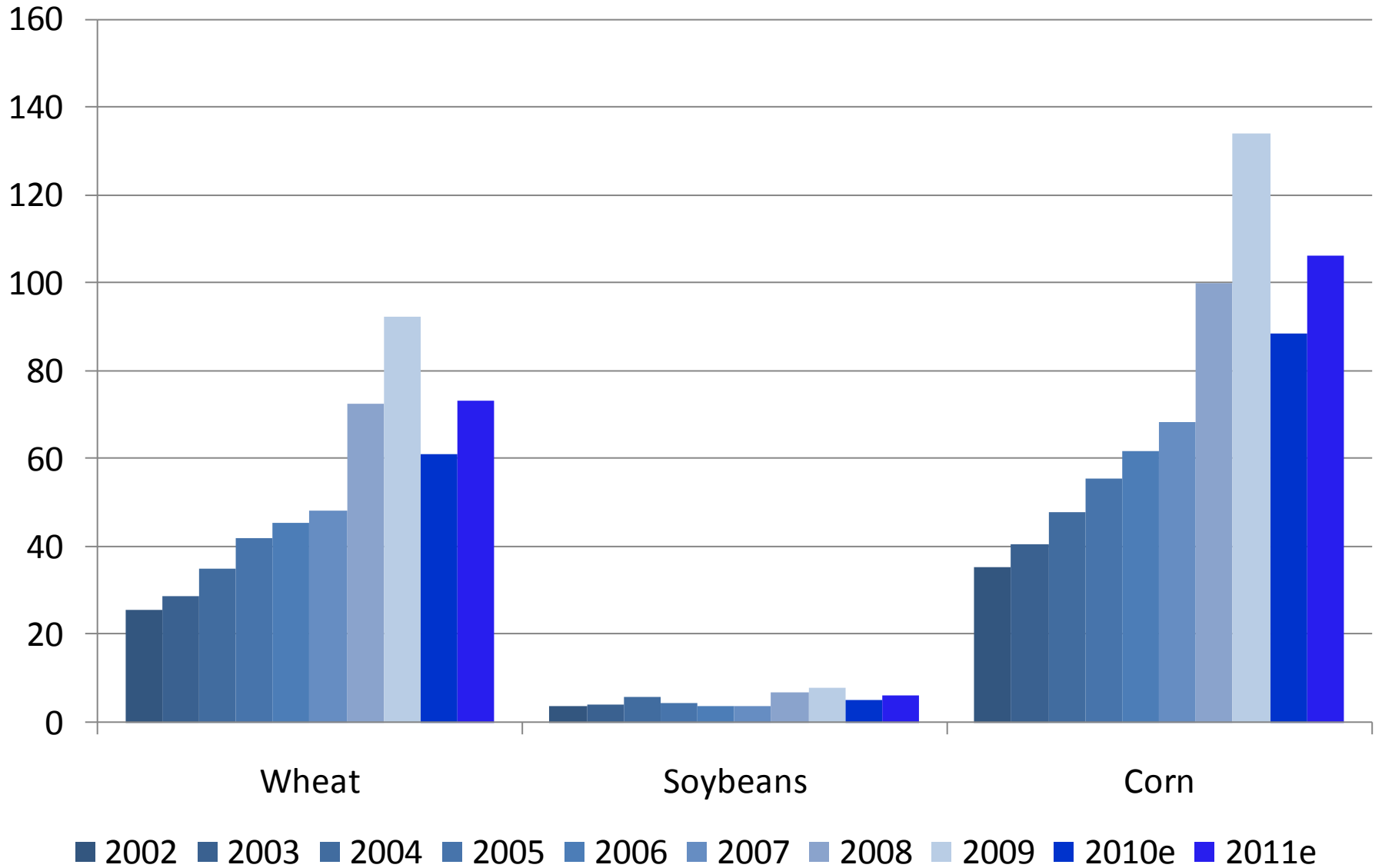
U.S. Urea and Corn Prices, April

(March prices for 2009-10)



Fertilizer Expenses

MN-ND RRV FBM

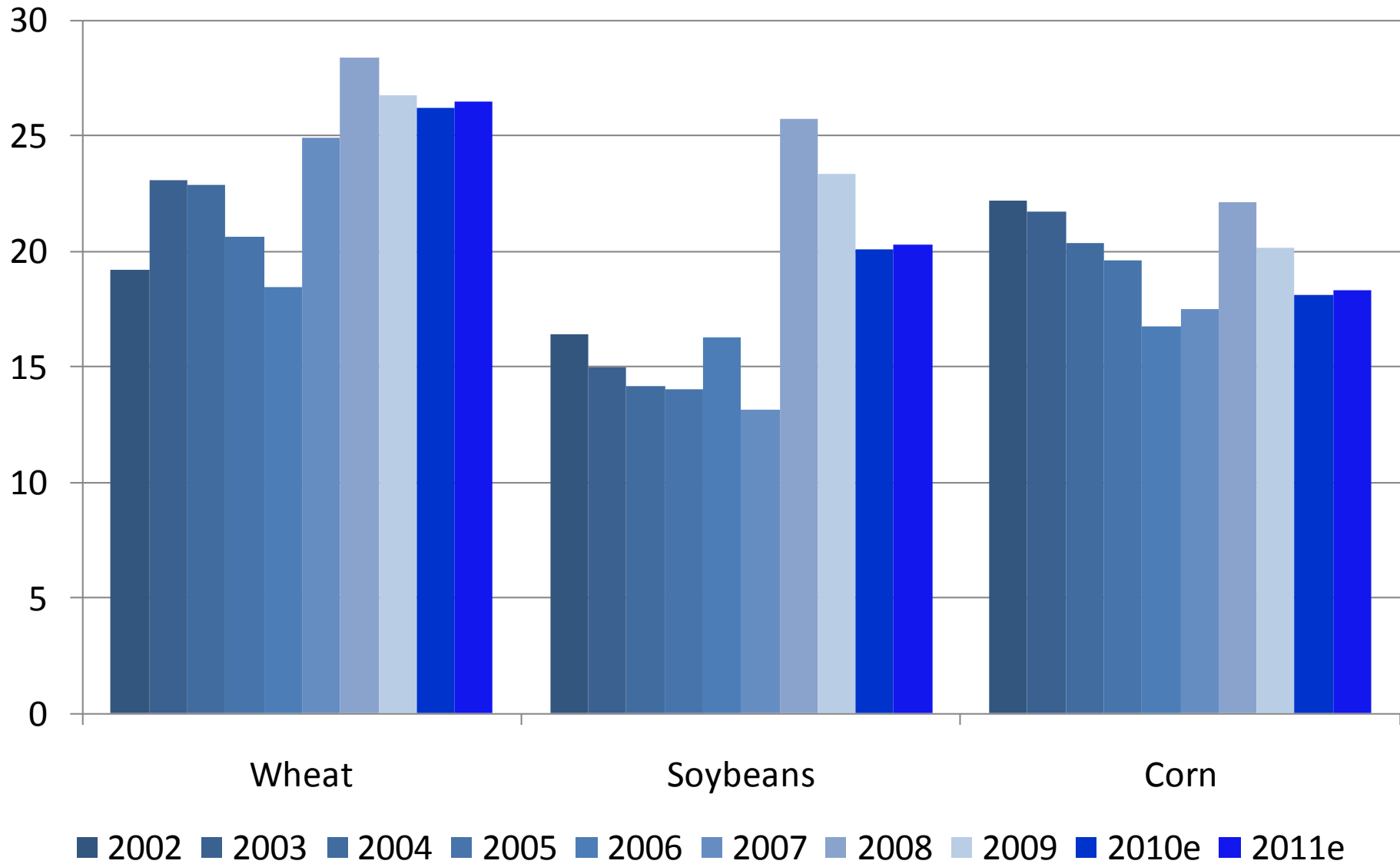


Cost Factors

- ◎ Price
- ◎ Quantity
 - slight adjustment or,
 - all or none (pesticide decision)

Chemical Expenses

MN-ND RRV FBM

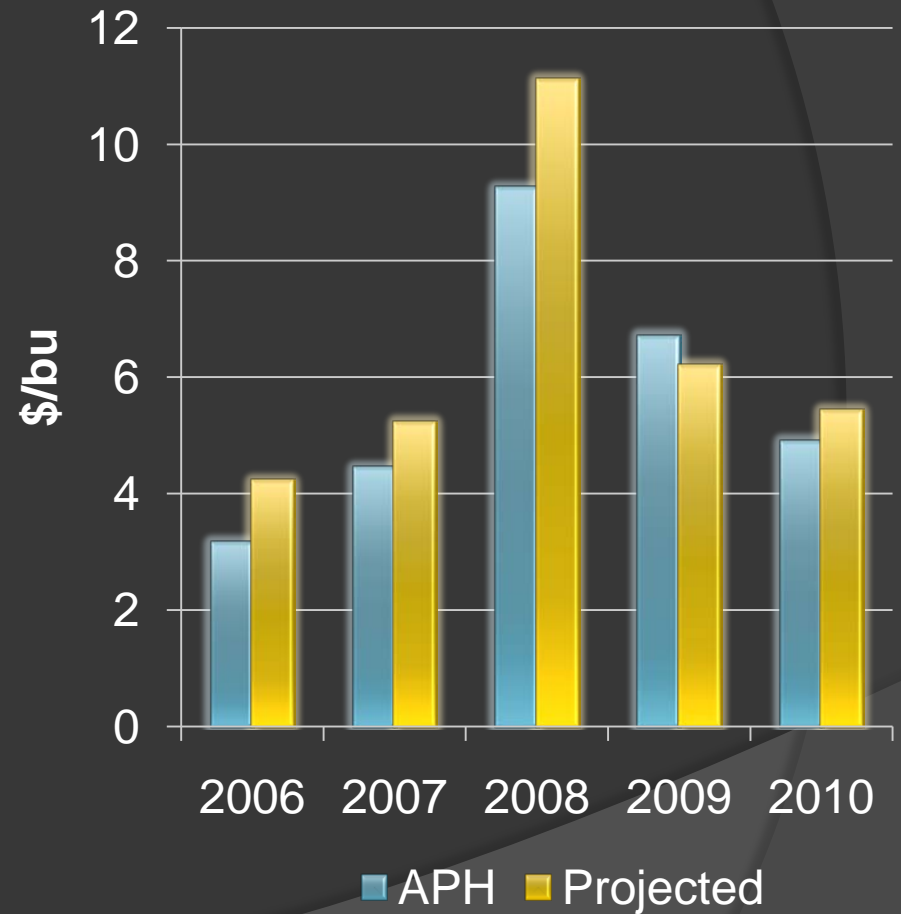


Crop Insurance Cost Factors

- Policy
- Insured Price
- Coverage Level
- Unit Type

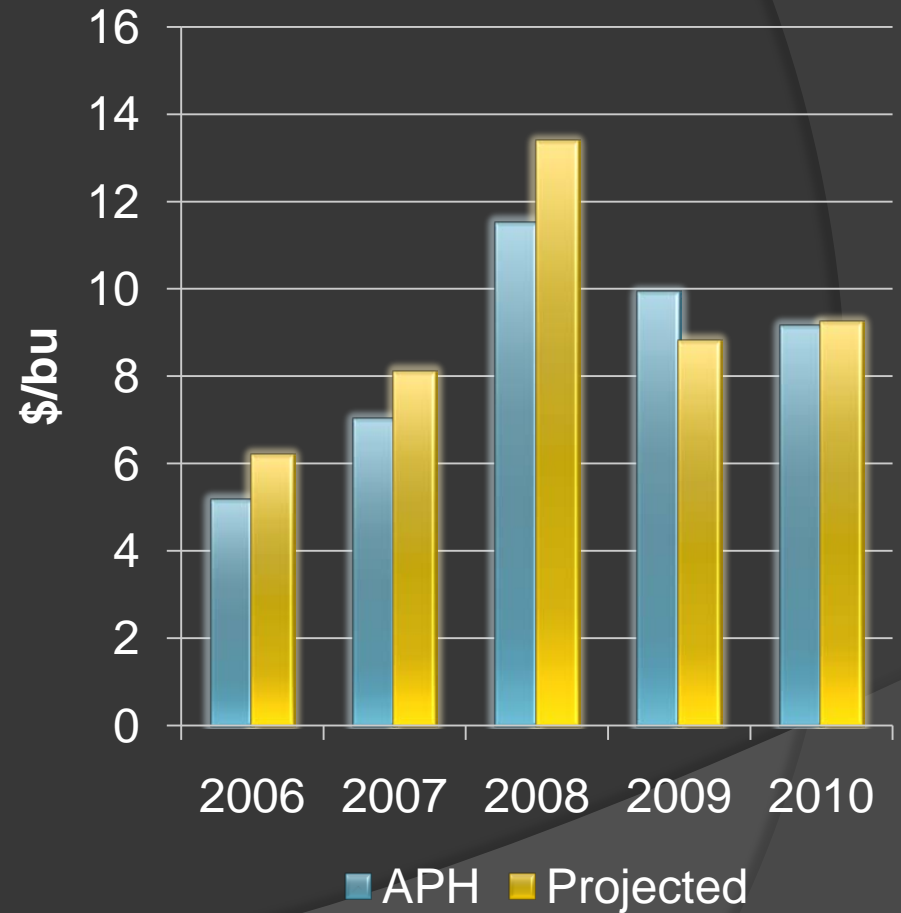
HRSW Crop Insurance Prices

	APH	RA Projected
2006	3.15	4.22
2007	4.45	5.23
2008	9.25	11.11
2009	6.70	6.20
2010	4.90	5.43



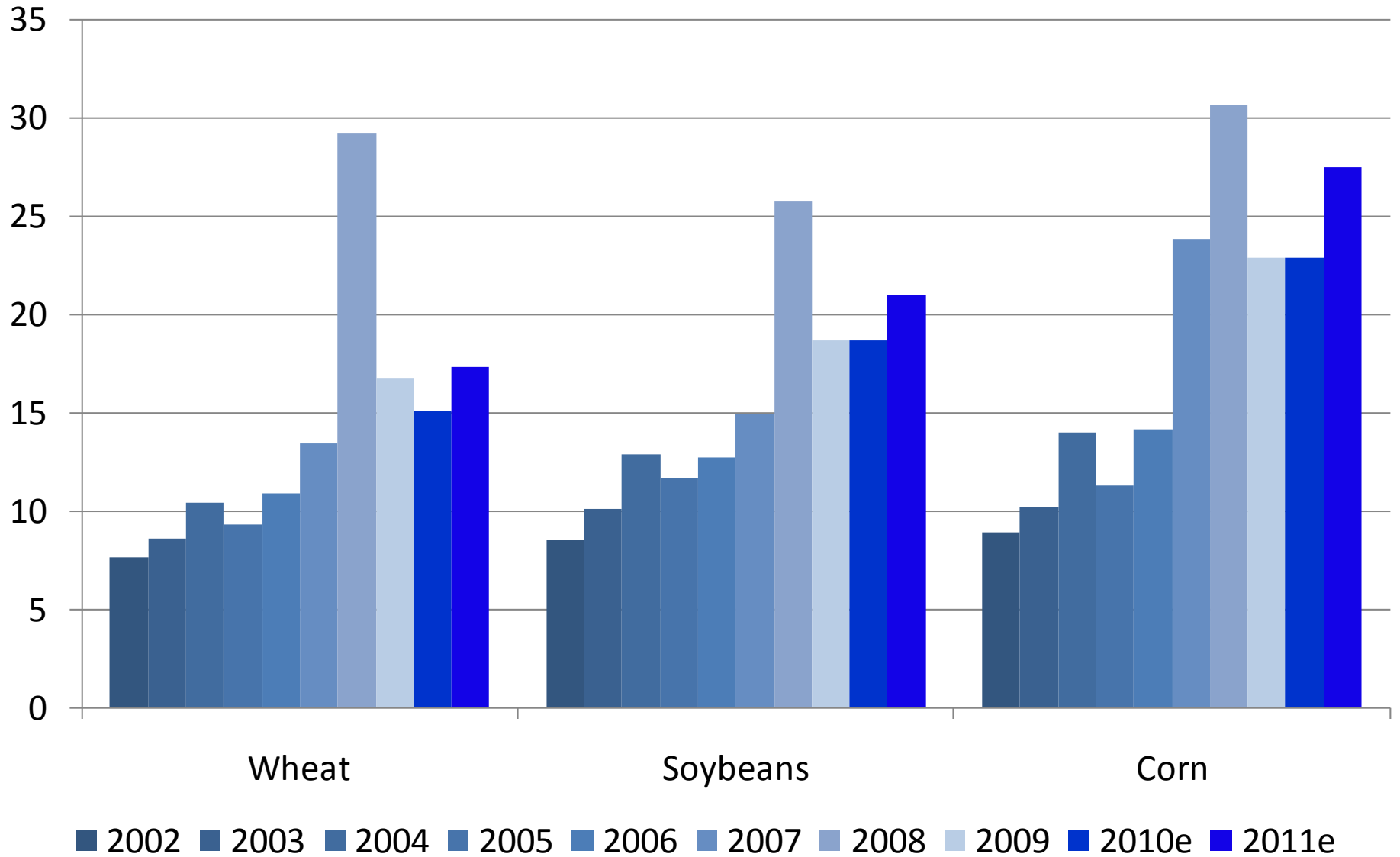
Soybean Crop Insurance Prices

	APH	RA Projected
2006	5.15	6.18
2007	7.00	8.09
2008	11.50	13.36
2009	9.90	8.80
2010	9.15	9.23



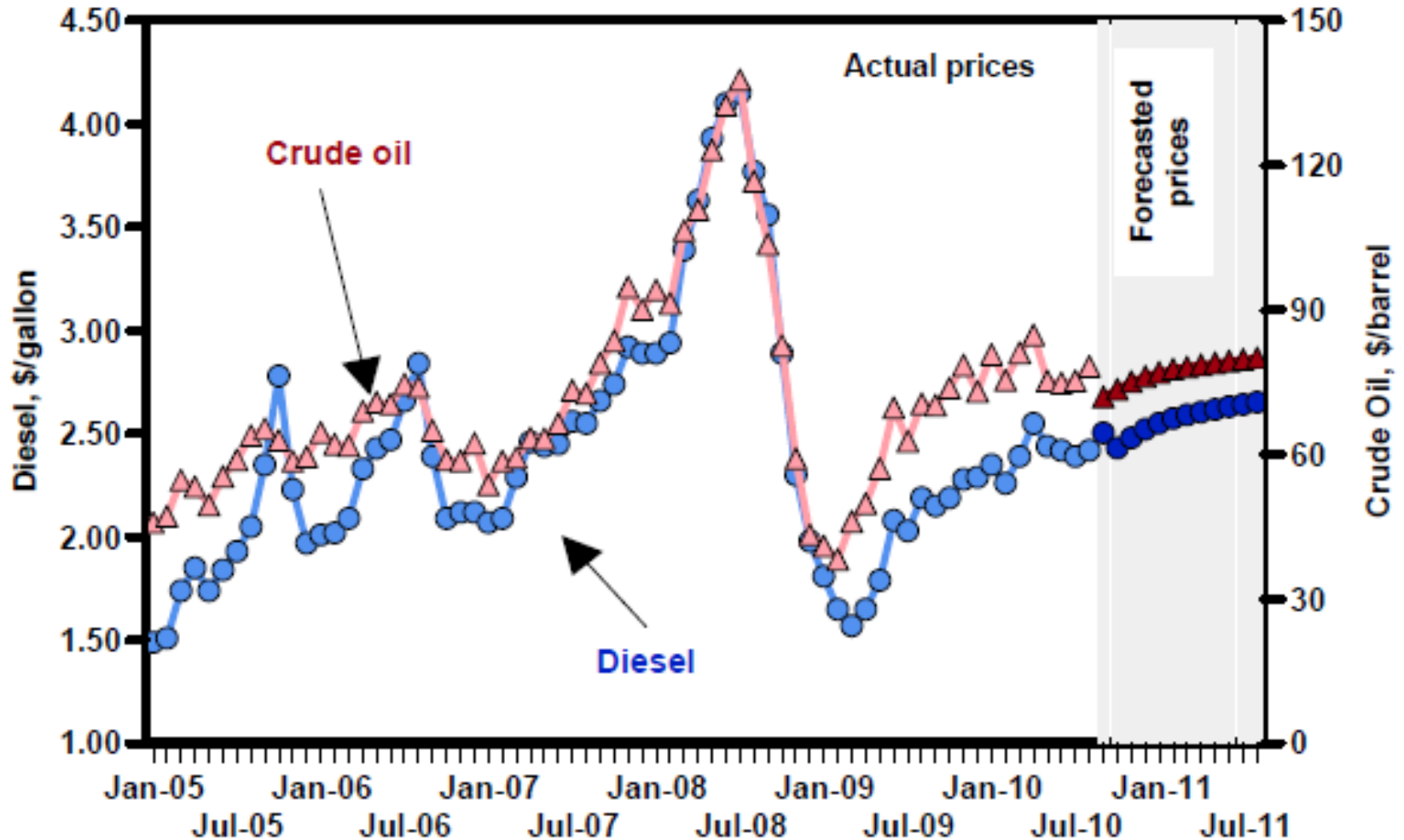
Crop Insurance Expenses

MN-ND RRV FBM



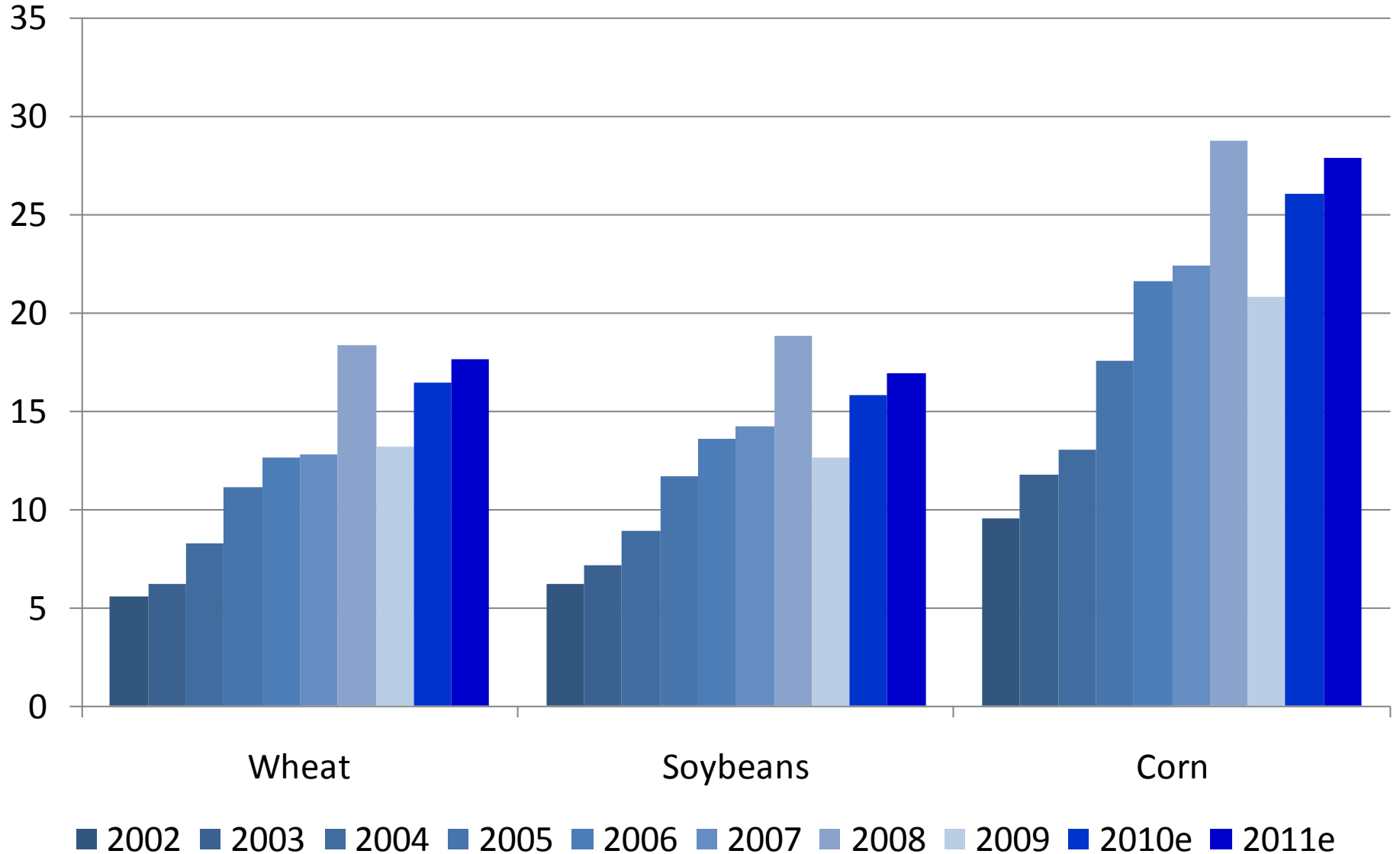
Futures-Based Price Forecasts for Non-taxable Diesel Fuel

Monthly diesel prices, Southwest Kansas basis.



Fuel & Oil Expenses

MN-ND RRV FBM



Cost Per Acre on Cash Rented Land ND Farm Business Management

