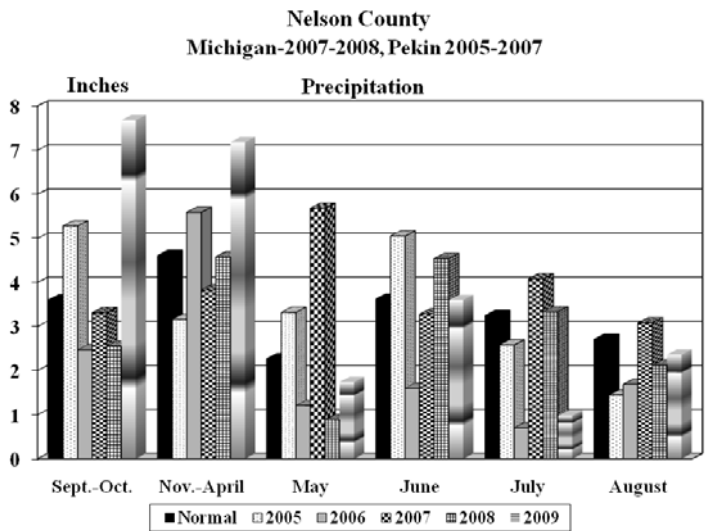
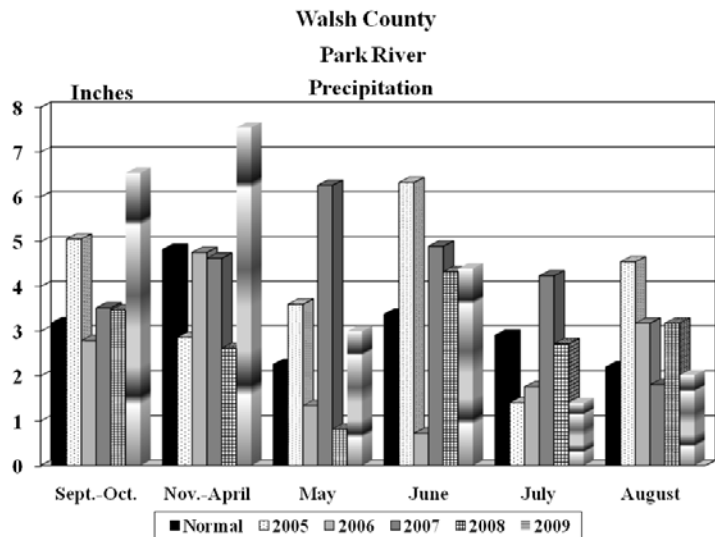
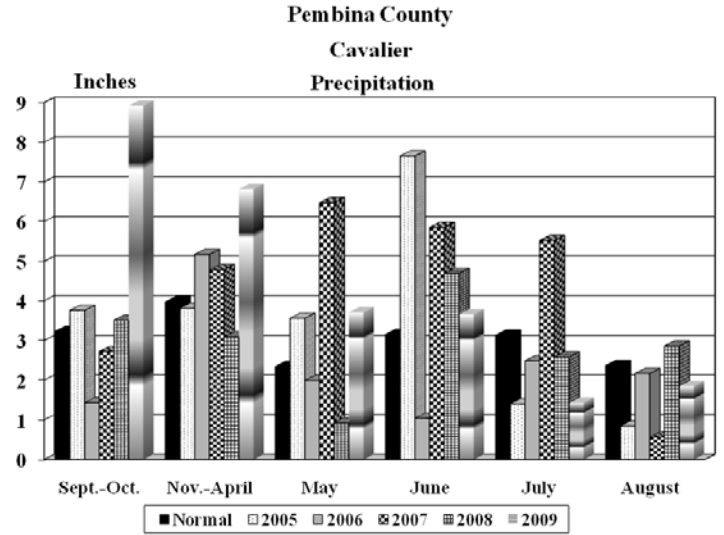
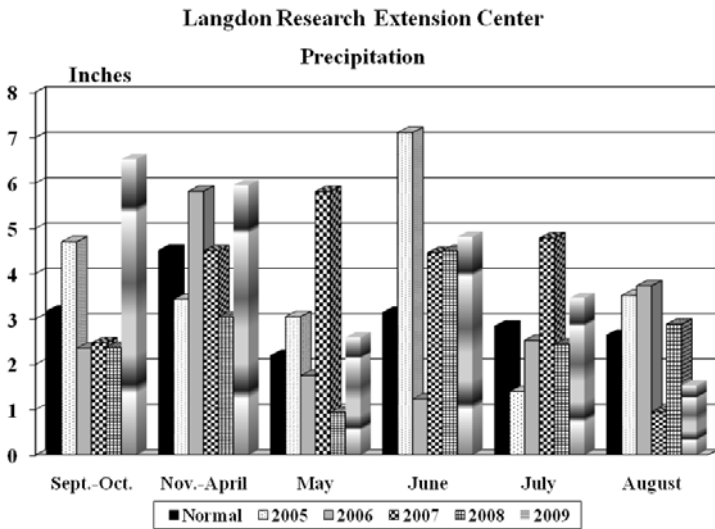
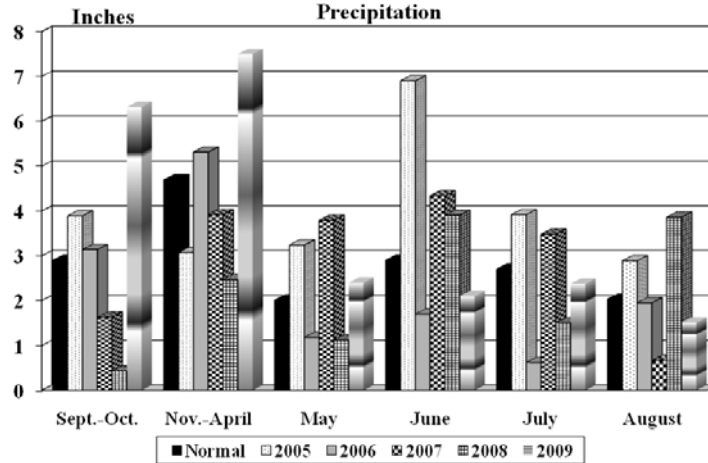


Langdon Research Extension Center and Off-Station 2005-2009 Precipitation Summaries

The graphs shown below indicate precipitation amounts from Langdon and each off-station location. Precipitation totals from the Langdon Research Extension Center are recorded on site while precipitation amounts from off-station locations are gathered from the nearest reporting National Weather Service and NDAWN reporting station(s) to the trial. Normal precipitation totals are from 1961-1990 except Langdon, which is from 1896-2008.



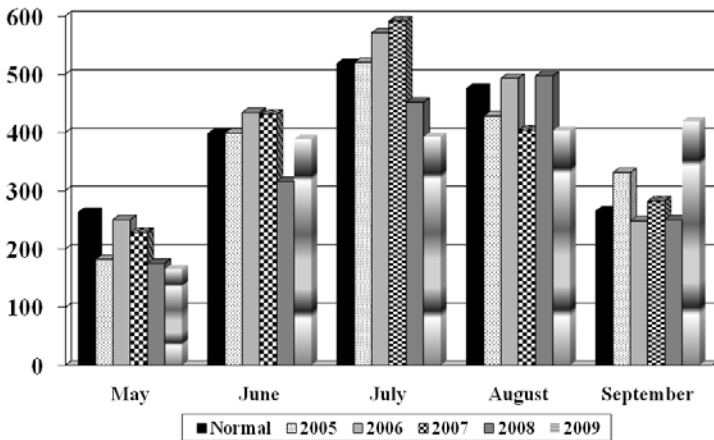
**Towner County
Cando 2009, Perth 2005-2008**



Growing Degree Days

Growing degree-days is a measure of heat units which relates plant development to air temperature. Cereal crops require a minimum temperature of 32⁰ F in order for plant development to begin while corn requires a minimum temperature of 50⁰ F. Plant development increases activity up to an optimum temperature of 95⁰ for cereals and 86⁰ for corn at which point plant development begins to retard. Corn growing degree days can be used as a general guide for plant development in other warm season crops.

**Langdon Research/Extension Center
Corn Growing Degree Days**



**Langdon Research/Extension Center
Small Grain Growing Degree Days**

