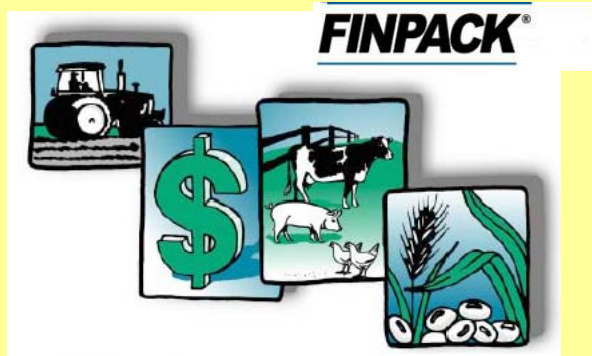


Region 4 West ND



## Farm/Ranch Business Management Education

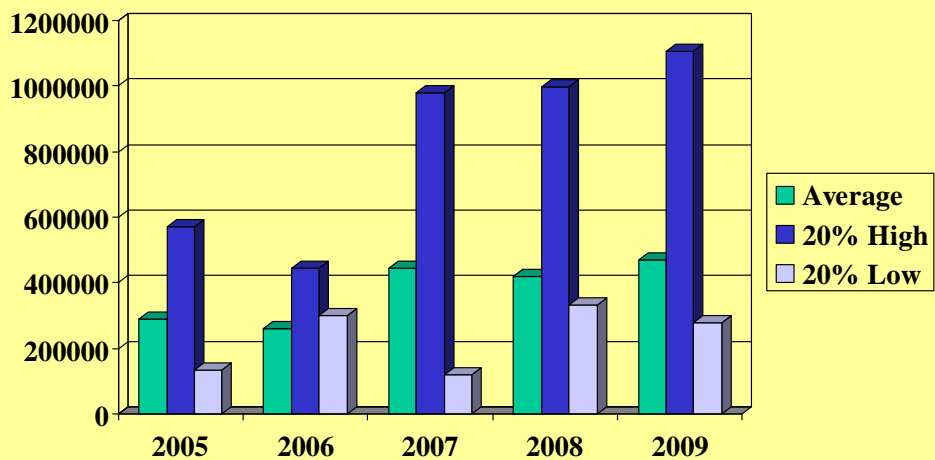
Year 2009

Jerry Tuhy, Instructor

Bismarck State College at DREC

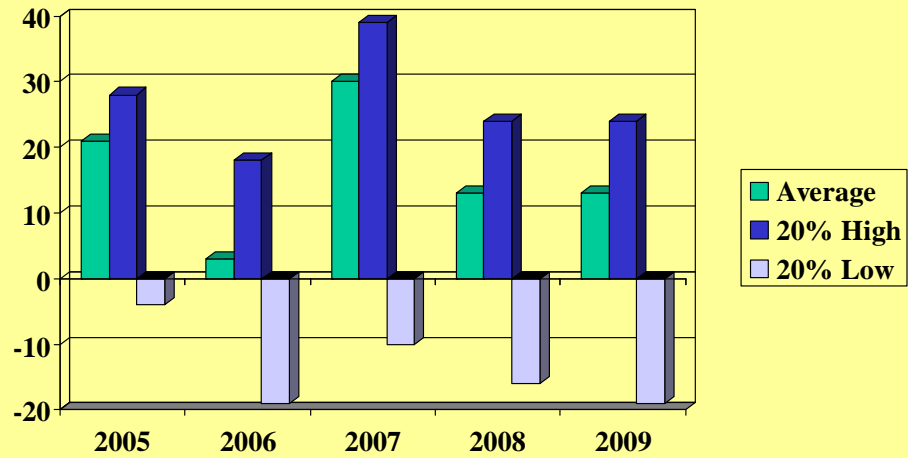
## Gross Income (Accrual)

Per farm for year

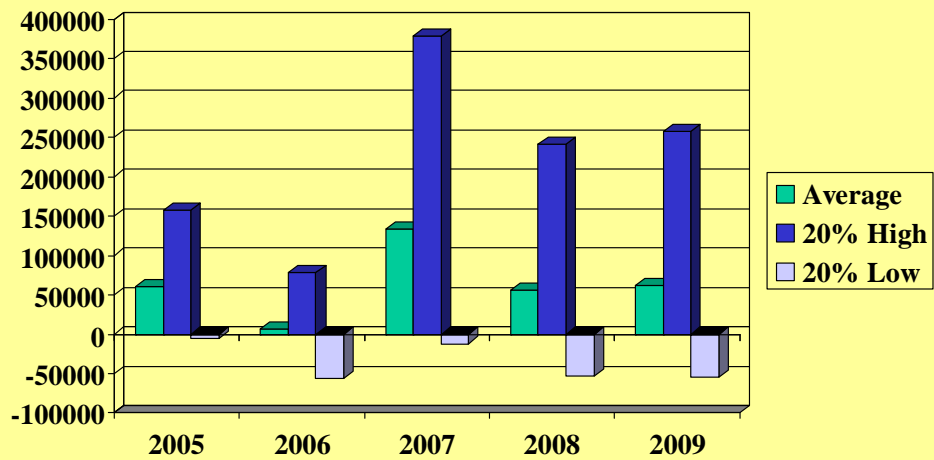


## Net Income Ratio (%)

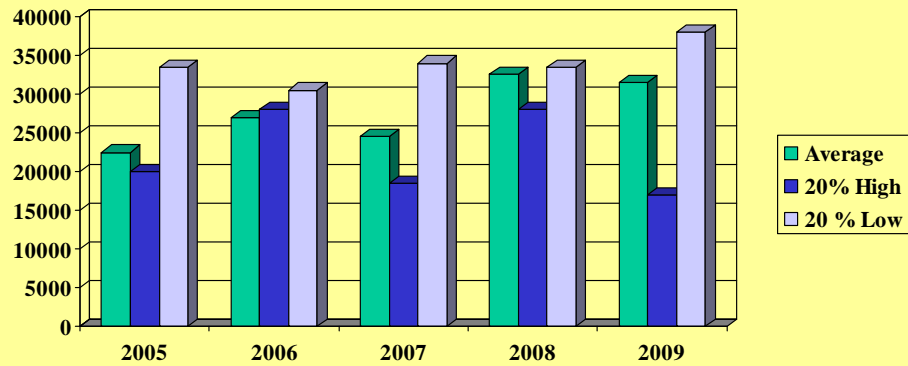
percentage of gross \$ that is net \$



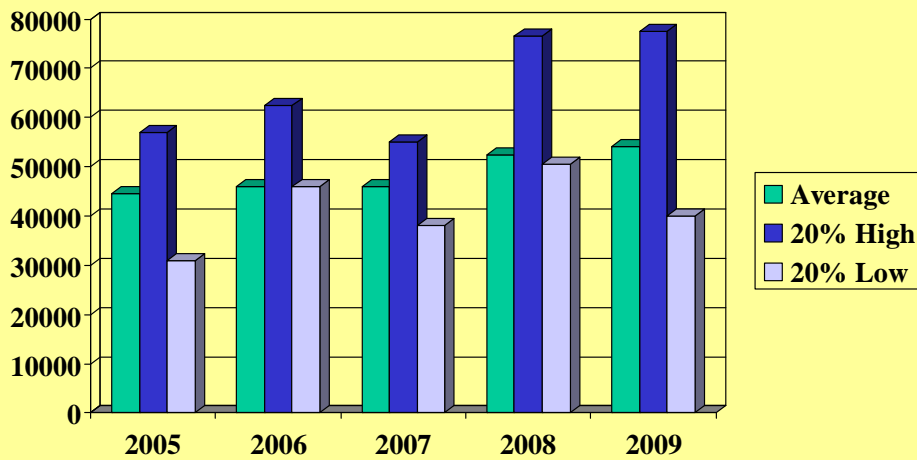
## \$ Net Farm Income "Profit"



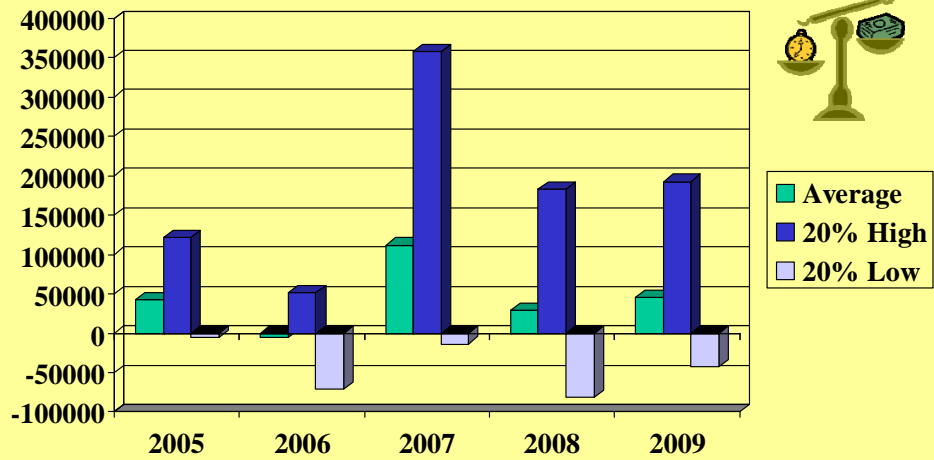
## \$ Net "Non-Farm" Income



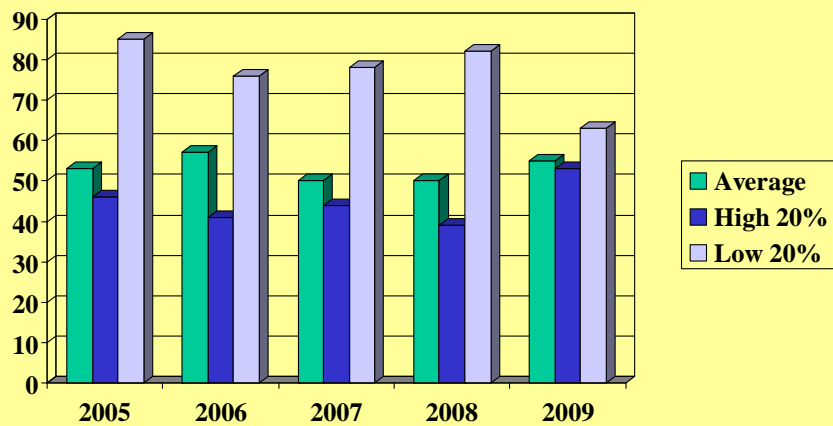
## Family Living & Income Taxes \$ spent/year



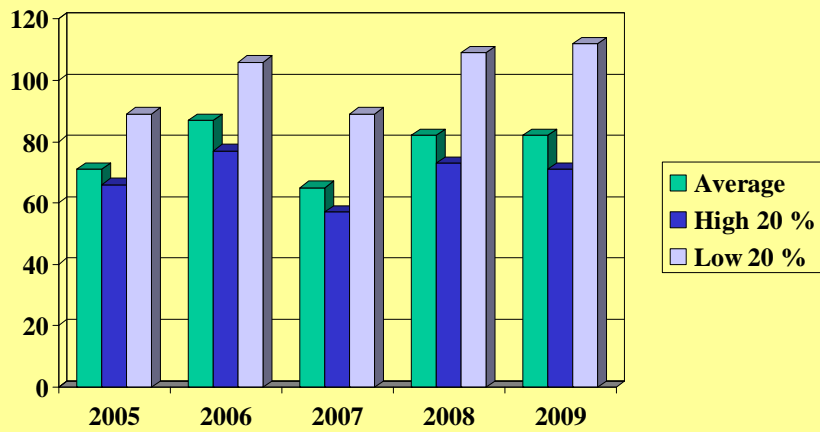
## Change in Retained Earnings \$ of equity gain per yr (cost basis)



## Farm Debt/Asset Ratio (%) end year cost basis

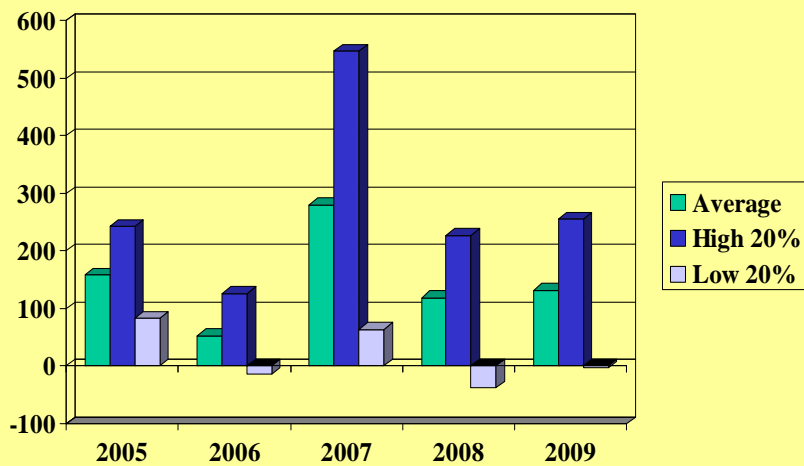


## Expense (oper+ Int) as % of Accrual Income



## Term Debt Coverage Ratio

a 100% ratio means "we can make all debt payments"

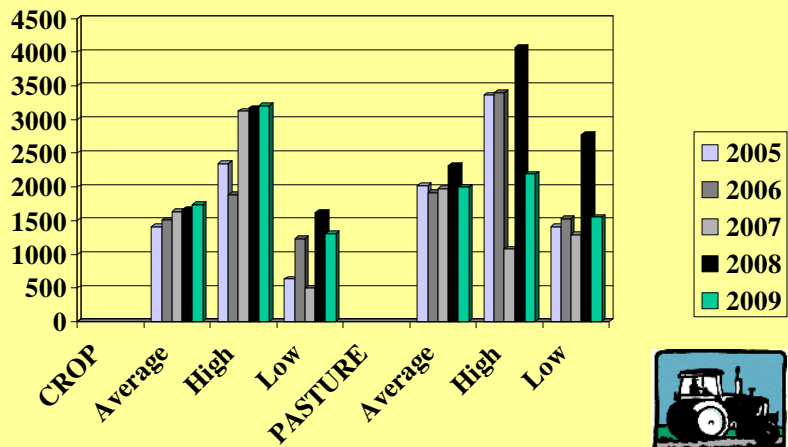


## Cash Flow 2009

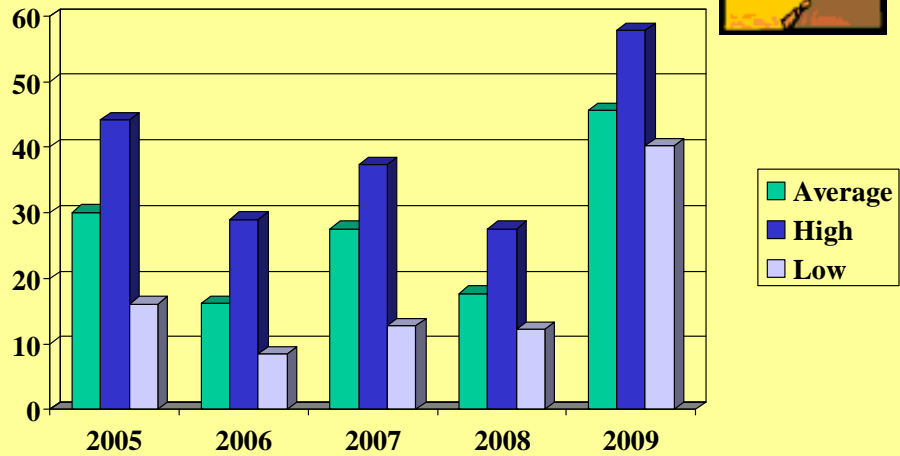
	Average	Low Profit	High Profit
<b>Gross Farm Income</b>	393111	309241	783227
<b>Non-Farm Income</b>	31265	37828	16849
<b>Cash Farm Expenses</b>	369086	302768	748578
<b>Family Living</b>	48043	36438	67711
<b>Income, SS Tax</b>	5893	3683	9594
<b>Net Capital Purchases</b>	101287	48219	251411
<b>Money Borrowed</b>	432389	356792	906069
<b>Principal Payments</b>	340912	317932	678329

For more info – see  
[www.finbin.umn.edu](http://www.finbin.umn.edu)

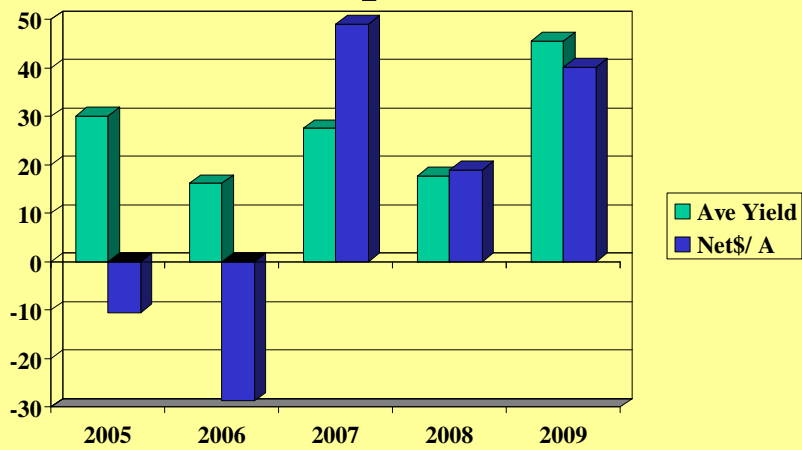
## Crop and Pasture Acres



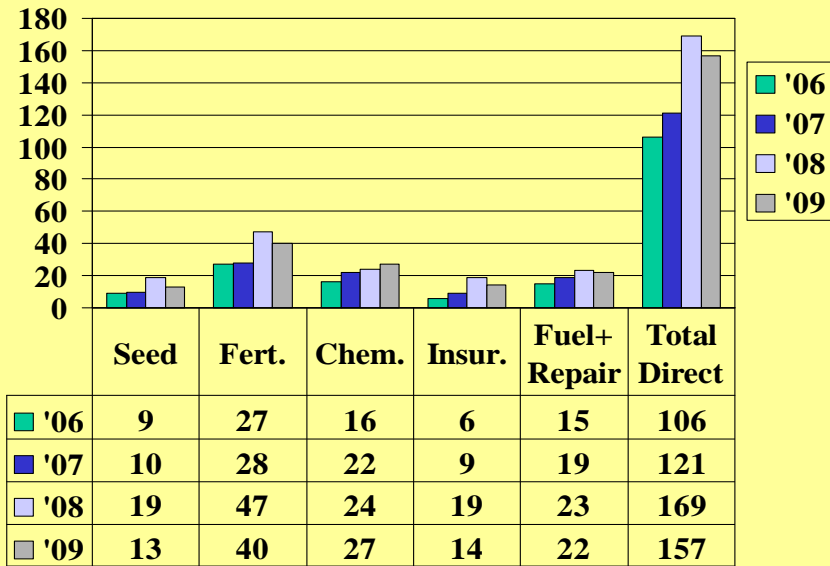
## Spring Wheat on Cash Rented (Bu. Yield/Acre)



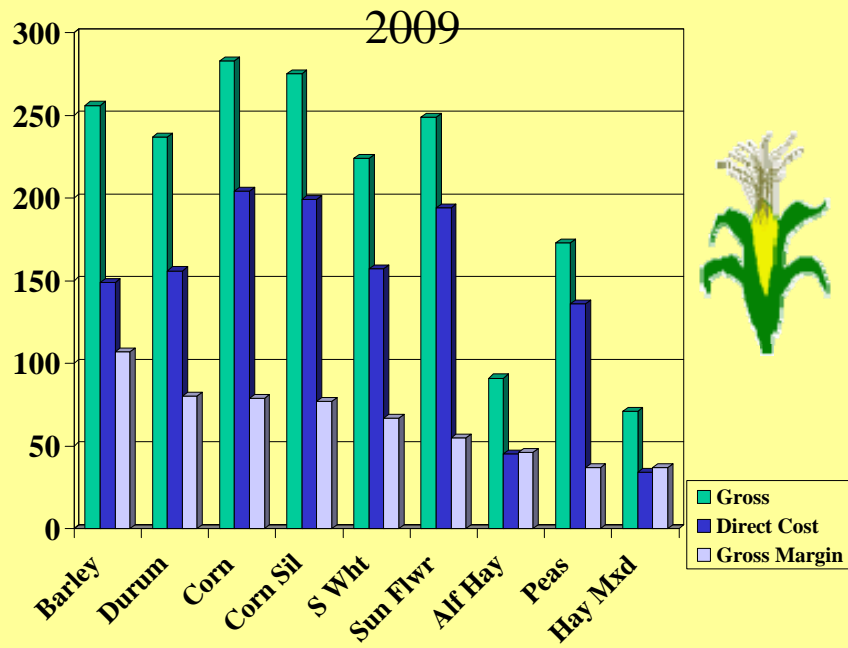
## Spring Wheat Ave Yields and Net \$ per Acre



Costs /acre for Spring Wheat comparing 06,07,08,09

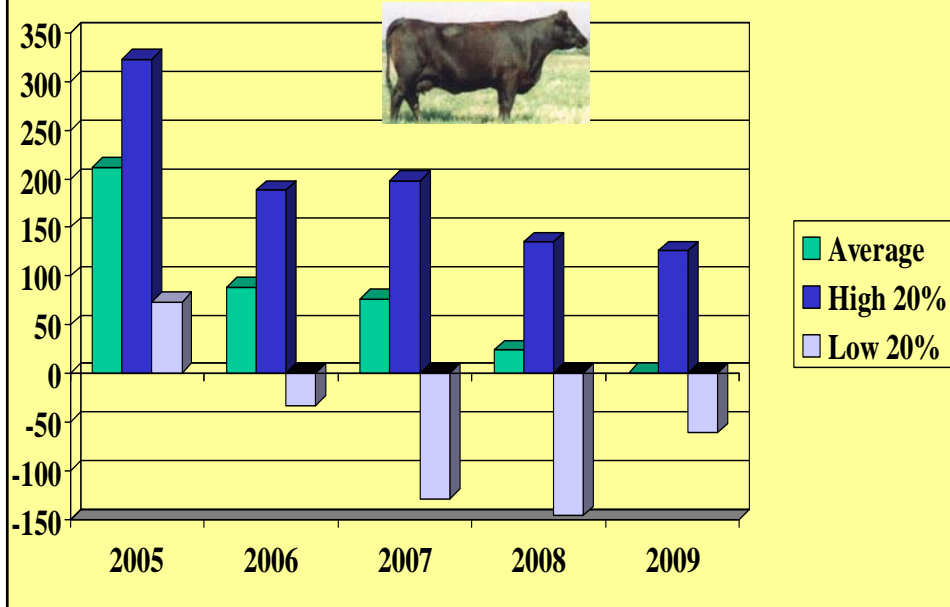


Crop Contributions to Overheads Year



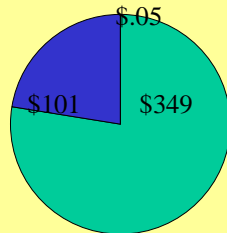


## \$ Net income /Beef Cow

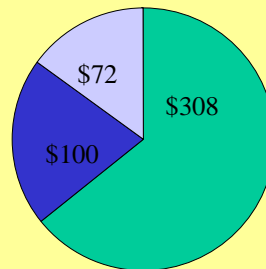


## Beef cow costs, returns 2009 per cow (fuel&repairs in OVHD)

average



high profit



■ direct ■ overheads ■ net \$

How are low profit and high profit  
Beef herds different ? For 2009 year

	Low Profit	High Profit
Value of calf/cow	\$469	\$521
Depreciation per cow	\$66	\$64
Direct cost/cow	\$465	\$355
Overhead expense/cow	\$79	\$53
Cost per cwt (D&Ovhd)	\$112	\$78
Net Income per Cow	-\$141	+\$72