

# Annual Flower Varieties for Western North Dakota

Dickinson Research Extension Station, 2009

by Tom Kalb<sup>1</sup>, Extension Horticulturist; Jerry Larson, Twyla Weinschrott, and Chad Weinschrott, Horticulturists; North Dakota State University

## Introduction

Annual flowers add instant color to home landscapes. These one-year wonders provide vibrant colors from spring to frost.

A total of 103 annual flower varieties were evaluated at the Dickinson Research Extension Center during the growing season of 2009. Varieties selected for testing were available to consumers at leading garden centers in western North Dakota.

## Climate

Planting was delayed due to cool weather throughout spring as well as a late snowfall on 6 June.

The growing season in Dickinson was approximately three degrees cooler than normal through the summer until September when temperatures averaged about eight degrees higher than normal (Figure 1).

Abundant snowfall in winter led to moist soil conditions in spring. Normal rainfall levels occurred in June, followed by a wet July and dry August (Figure 1).

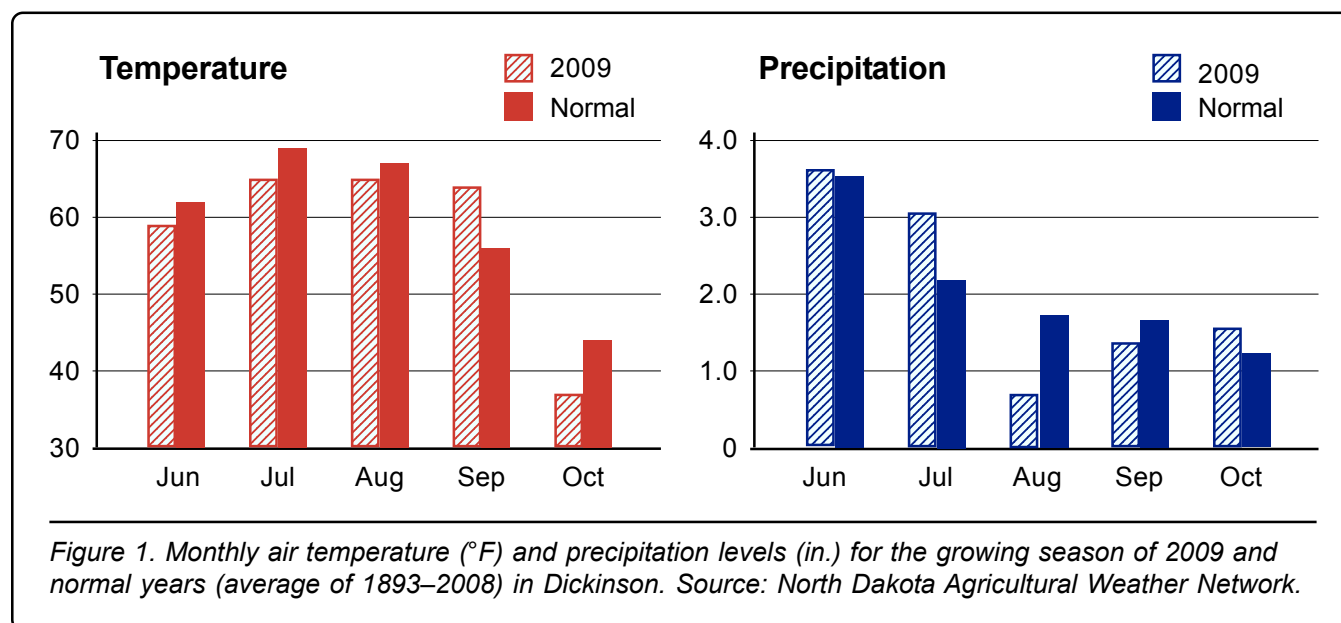
Frosts came late in both spring and fall; thus the growing season itself was close to normal in length. The last killing frost (28 °F) in spring was on 6 June and the first killing frost occurred on October 9. Killing frosts normally occur on 12 May and 23 September.

## Methods

Plants were obtained from commercial garden centers in Dickinson and Minot. Six plants were evaluated for each variety.

The plants were transplanted on 12 June. Weeds were controlled with trifluralin and manual weeding. Plants were irrigated as needed using overhead irrigation. Plants were fertilized on 12 June, 7 July, and 18 August with 0.72N–0.24P–0.48K ounces per 100 square feet each time. Plants were deadheaded approximately every 14 days.

Varieties were evaluated for appearance, uniformity, health, vigor, and bloom number on 16 August and 23 September. Varieties were given a final rating of 1–6, with 1 = poor and 6 = excellent. Plants were measured for height and spread on 23 September.



<sup>1</sup>Contact address: 3715 E. Bismarck Expressway, Bismarck, ND 58501; Tel: 701-221-6865; E-mail: tom.kalb@ndsu.edu

## Results

Plants were generally healthy but aster yellows disease affected some varieties of marigolds and petunias. The 'Wave' petunias were especially affected.

Table 1 shows the performance rating and comments for each variety in the trial. The following are general comments on major groups of annuals as well as miscellaneous varieties:

**Marigold.** Numerous varieties performed well in spite of our cool summer. Among the erect African types, 'Antigua Yellow' was especially impressive for its earliness. Its blooms were large and literally blanketed the dwarf 12-inch plants. 'First Lady' was most impressive for its uniformity, clear yellow blooms, and its attractive plant form. 'Inca II' and 'Jubilee' maintained their reputation as proven performers.

Among the dwarf French types, 'Bonanza Bolero' was most impressive. Its fiery blooms brightly adorned its plants; the plants themselves were healthy and uniform in appearance. The large blooms of the 'Durango' series were attractive. In contrast, the 'Little Hero' types were disappointing due to lack of vigor.

**Petunia.** Grandifloras 'Supercascade Rose', 'Prism Sunshine', as well as the 'Dreams' and 'Ultras' series did exceptionally well. Their flowers were bold and eye-catching. The 'Madness' floribundas were solid performers, and their free flowering habit was especially noteworthy after heavy rains. The 'Wave' petunias generally perform exceptionally well in our trials, but these varieties struggled with aster yellows disease in this particular trial.

**Rudbeckia.** The most impressive variety—perhaps among all varieties in the garden during midsummer—was 'Denver Daisy'. It grew vigorously and bloomed early. Its red and gold bicolor blooms were large and bold.

In the late season, the hybrid 'Tiger Eye Gold' was impressive for its abundance of blooms. The blooms of another new variety, 'Cherry Brandy' were a novelty red, but the blooms lacked brilliance and were sparse.

Growers would be advised to try 'Cappuccino'. Although it was not evaluated in Dickinson, it has done exceptionally well in other trials. The earthy, golden flowers of 'Cappuccino' are distinctively warm in appearance and abundant in number.

**Zinnia.** The 'Zahara' series, new in 2008, was most impressive in this and other trials conducted in the region. Its plants tolerated drought and produced an abundance of daisy-like blooms. It surpassed the already impressive 'Profusion' series for flower number and size. The blooms of 'Zahara Yellow' have a unique yellow-chartreuse color. We look forward to testing the 2010 All

America Selections Winner 'Zahara Starlite' next year.

The prolific flowering habit of 'Zowie! Yellow Flame' was noteworthy. 'Uproar Rose' was especially impressive for the size of blooms and its long, sturdy stems.

**Miscellaneous.** The most talked about variety in the garden was 'Only the Lonely' nicotiana. The tall 60-inch plants produced stalks of pure white tubular flowers that were fragrant at night.

'Sparkler Mix' cleome was another tall plant that generated much interest. Cleome is vastly underutilized since it is not showy when gardeners purchase their bedding plants at garden centers. The unique flower heads provide for a wonderful background to a flower garden. Cleome is susceptible to flea beetles, especially after the canola crop is harvested, so gardeners need to be prepared for that. This particular trial in Dickinson did not suffer from flea beetles.

In contrast to these garden giants, the most impressive diminutive plant was 'Chilly Chili' ornamental pepper. The tiny plants were blanketed with an unbelievable amount of bright yellow and red peppers. It would make a very interesting—not to mention edible—addition to a garden.

'Blue Angel' salvia drew much attention for the unique aquamarine blue color of its flowers.

Gazania is an underutilized flower. The red striped petals of 'Tiger Mix' were amazing and the silvery foliage of 'Kiss Frosty Mix' added special beauty to the garden.

Among dianthus, 'Amazon Neon Duo' generated most interest. This variety is an upright type with large flower heads for cutting. The brilliance of its fuchsia purple flowers was remarkable.

Dahlias did well in this year's trial. 'Phantom of the Opera' was most impressive as its dark purple foliage contrasted well with its showy flowers.

## Acknowledgements

The author wishes to thank Gaffney's Greenhouse in Dickinson, as well as Lowe's Garden Center and Green Thumb Greenhouse in Minot for donating plants used in this research. The authors wish to thank Director Kris Ringwall and all of the staff at the Dickinson Research Extension Center for their assistance in this project.

Table 1. Performance of annual flower varieties in Dickinson, North Dakota during 2009.

Name	Height	Spread	Rating <sup>2</sup>	Comments
<i>Ageratum houstonianum</i> 'Blue Danube'	6"	6–10"	●○○○○○	Early; compact plants with mid-blue flowers; mounded habit; not especially vigorous or showy
<i>Amaranthus caudatus</i> 'Love Lies Bleeding'	16–18"	18–20"	●○○○○○	Plants cannot support heavy seed heads; not very attractive
<i>Antirrhinum majus</i> (Snapdragon) 'Freesong Mix'	16–20"	14–18"	●●●○○○	Well-branched; suitable for cutting
<i>Antirrhinum majus</i> (Snapdragon) 'La Bella Mix'	20–24"	16–20"	●●●●○○	Plants are healthy and well-branched; flowers are open and abundant
<i>Antirrhinum majus</i> (Snapdragon) 'Rocket Mix'	30–36"	18–22"	●●○○○○	This popular tall variety struggled this year due to wind; plants fell over and some died back
<i>Brassica oleracea</i> (Flowering Kale) 'Emperor White'	12–16"	16–20"	●●○○○○	Fairly attractive, white edges appear in fall; not attractive in summer; heads slightly jut out from bottom of plants
<i>Browallia speciosa</i> 'Blue Bells'	10–12"	12–14"	●●○○○○	Compact plants; pale leaves
<i>Calendula officinalis</i> 'Bon Bon Mix'	10–12"	12–16"	●●●○○○	Bright flower colors; nice blend
<i>Callistephus chinensis</i> (Aster) 'Dwarf Queen Mix'	12–14"	10–12"	●○○○○○	Lots of double flowers in summer; prolific blooming stunted overall plant growth
<i>Capsicum annuum</i> 'Black Pearl'	18–22"	8–10"	●●●○○○	Plants with deep purple foliage; open plant form; jet black marbles for fruits
<i>Capsicum annuum</i> 'Chilly Chili'	8–10"	16–20"	●●●●●●	Very compact plants; absolutely covered with bright yellow and red fruits; fruits point upwards
<i>Catharanthus roseus</i> (Upright Vinca) 'Titan Rose'	10–14"	10–14"	●●●○○○	Bright rose-colored flowers; free flowering; foliage is not as glossy as expected; not as vigorous as expected
<i>Celosia plumosa</i> 'Fresh Look Mix'	12–14"	12–16"	●●●○○○	Early; non-fading colors; lots of blooms; plants lack uniformity
<i>Centaurea cyanus</i> 'Florence Blue'	32"	28"	●●○○○○	Healthy plants full of bright blue blooms until frost; plants eventually flopped over
<i>Centaurea cyanus</i> 'Florence Mix'	32"	28"	●●○○○○	Healthy plants with pink, white, and red blooms until frost; plants eventually flopped over
<i>Cleome hasslerana</i> (Spider Flower) 'Sparkler Mix'	36"	28–30"	●●●●○○	Colorful; healthy; upright plants with blooms in shades of pink, rose and white; good border plant; escaped from flea beetles this year

<i>Cleome hasslerana</i> (Spider Flower) 'Sparkler Rose'	36"	28–30"	●●●●●○	Colorful; healthy; upright plants with rose-colored blooms; good border plant; escaped from flea beetles this year
<i>Cosmos bipinnatus</i> 'Cutesy Mix'	24–28"	24–28"	●●○○○○	Plant growth lacks uniformity; yellowing leaves; large blooms in shades of pink, white, and purple
<i>Cosmos bipinnatus</i> 'Sonata Mix'	24"	16–18"	●●●●○○	Loads of single flowers in shades of pink, white, and carmine
<i>Dahlia pinnata</i> 'Decorative'	18–20"	16–18"	●●●●○○	Healthy plants with blooms in a bright blend of colors including purple, red and yellow; free flowering
<i>Dahlia pinnata</i> 'Figaro Mix'	14–18"	12–14"	●●○○○○	Free flowering; bright, double to semidouble blooms
<i>Dahlia pinnata</i> 'Phantom of the Opera'	24–28"	18–22"	●●●●○○	Dark purple foliage; taller flower stems than comparable types; flowers lack brilliance
<i>Dianthus barbatus</i> 'Amazon Neon Purple'	20–22"	12–16"	●●●●○○	Late blooming; flower heads are full and globular, extremely vibrant, fuchsia-purple; upright habit; long stems for cutting; wind-damaged plants
<i>Dianthus barbatus</i> 'Bouquet Purple'	16–20"	12–14"	●●○○○○	More upright habit than 'Amazon Neon Duo', but flower heads are thinner and lack brilliance
<i>Dianthus caryophyllus</i> (Carnation) 'Lillipot Mix'	10"	10"	●●○○○○	Pleasant and clear colors; nice flower form; small stems, dwarf plants
<i>Dianthus chinensis</i> 'Panda Mix'	8–10"	10–12"	●●○○○○	Less uniform but slightly larger plants; blooms are large and highly serrated; early
<i>Dianthus chinensis</i> 'Super Parfait Strawberry'	8–10"	8–10"	●●○○○○	Dense mounds; large, scarlet-pink blooms with dark eyes; relatively few blooms
<i>Dianthus chinensis</i> 'Teistar Mix'	10–12"	10–12"	●●●●●●	Healthy, uniform plants are loaded with blooms; early; blooms are bright with lacy edges; some flowers solid while others have contrasting colors
<i>Dianthus chinensis</i> × <i>barbatus</i> 'Ideal Select Mix'	8–10"	8–10"	●●●●○○	Short mounds with lots of blooms; petals have bright contrasting colors; early
<i>Dyssodia tenuiloba</i> (Dahlberg Daisy) 'Golden Fleece'	8"	14–18"	●●○○○○	Sprawling plants with mounds of golden daisy heads; some dieback
<i>Gazania splendens</i> 'Kiss Frosty Mix'	8–10"	12–16"	●●●●●●	Very attractive, silver-leaved plants bear lots of flowers
<i>Gazania splendens</i> 'Tiger Mix'	8–10"	10–12"	●●●●○○	Petals have reddish inner stripes making for a striking contrast; eye-catching
<i>Gomphrena globosa</i> 'Fireworks'	24"	24"	●●●●○○	Medium purple globes adorn tall, wiry stems; more useful for cut flower bouquets than outdoor garden beds

<i>Leucanthemum paludosum</i> 'White Buttons'	16–20"	24–28"	●●●○○○	Still blooming strong; tiny white daisies; plants not as uniform as seen at other sites
<i>Limonium sinuate</i> 'Excellent Mix'	24–26"	20–24"	●●○○○○	Bloomed late; plants were healthy but subject to wind damage; good flowers for cutting
<i>Lobelia species</i> 'Regalia Sky Blue'	8"	10–12"	●●○○○○	Weak plants; few blooms
<i>Marabilla jalapa</i> (Four O'Clock)	28–32"	24–28"	●●●○○○	Unique, open form; small, trumpet-shaped flowers are flecked in shades of red, gold and white;
<i>Nicotiana alata</i> (Flowering tobacco) 'Hummingbird II Apple Blossom'	10–12"	10–12"	●○○○○○	Plants lacked vigor; not many flowers
<i>Nicotiana alata</i> (Flowering tobacco) 'Hummingbird II Red'	10–12"	28–30"	●○○○○○	Plants were unhealthy and lacked vigor; not many flowers
<i>Nicotiana sylvestris</i> (Flowering tobacco) 'Only the Lonely'	56–64"	14–16"	●●●●○○	Stately plants; most eye-catching variety in trial; fragrant at night; plants flopped over in late fall
<i>Nierembergia caerulea</i> 'Purple Robe'	8–10"	14–16"	●●●●○○	Compact, lacy plants covered with light purple, delicate blooms
<i>Nierembergia caerulea</i> 'White Robe'	8–10"	16–20"	●●○○○○	Compact, lacy plants with pure white, delicate blooms
<i>Petunia × hybrida</i> (Floribunda) 'Madness Double Rose and White'	12–14"	18–22"	●●●○○○	Rugged plants; masses of double, bicolor flowers
<i>Petunia × hybrida</i> (Floribunda) 'Madness Lavender Glow'	12–14"	18–22"	●●○○○○	Struggled this year; susceptible to aster yellows; brilliant lavender-rose blooms with glowing yellow throats
<i>Petunia × hybrida</i> (Floribunda) 'Madness Midnight'	12–14"	20–24"	●●●●○○	Velvety, dark blue blooms; tight branching habit; free flowering
<i>Petunia × hybrida</i> (Floribunda) 'Madness Orchid'	12–14"	20–22"	●●●●○○	Lavender blue petals with dark veins; plants were full and vigorous; flowers were small but abundant
<i>Petunia × hybrida</i> (Floribunda) 'Madness Red'	12–14"	16–20"	●○○○○○	Plants were a bit chlorotic; red color of blooms was a bit inconsistent and not as brilliant as preferred
<i>Petunia × hybrida</i> (Grandiflora) 'Celebrity Burgundy'	10–12"	24–28"	●●●●○○	Rich burgundy flowers; healthy plants with dense branching
<i>Petunia × hybrida</i> (Grandiflora) 'Daddy Blue'	12–16"	20–24"	●●●●○○	Healthy and vigorous; blooms early; deep purple veins
<i>Petunia × hybrida</i> (Grandiflora) 'Daddy Sugar'	12–16"	20–24"	●●●●○○	Plants became a bit chlorotic; orchid-colored petals with deep purple veins
<i>Petunia × hybrida</i> (Grandiflora) 'Dreams Appleblossom'	10–14"	16–20"	●●●●○○	Lots of soft pink flowers; vigorous plants with tight branching

<i>Petunia</i> × <i>hybrida</i> (Grandiflora) 'Dreams Fuchsia'	10–14"	12–16"	●●●●○○	Beautiful fuchsia flowers with glowing throats; maintained dense branching habit; healthy
<i>Petunia</i> × <i>hybrida</i> (Grandiflora) 'Frost Cherry'	12–14"	20–22"	●●●●○○	Cherry red blooms with pure white edges; lots of large blooms; rugged plants
<i>Petunia</i> × <i>hybrida</i> (Grandiflora) 'Prism Sunshine'	10–14"	24–28"	●●●●●○	The best yellow petunia; plants were slow to get started this year
<i>Petunia</i> × <i>hybrida</i> (Grandiflora) 'Sonata'	12–16"	20–24"	●●●●○○	Lots of big, double, pure white blooms
<i>Petunia</i> × <i>hybrida</i> (Grandiflora) 'Supercascade Rose'	14–16"	28–32"	●●●●●●	Most impressive petunia this year; very large, bright rose-colored flowers; healthy plants
<i>Petunia</i> × <i>hybrida</i> (Grandiflora) 'Ultra Blue Star'	14–18"	28–32"	●●●○○○	Large, navy blue blooms with white stars; very vigorous and slightly leggy
<i>Petunia</i> × <i>hybrida</i> (Grandiflora) 'Ultra Burgundy'	12–14"	28–32"	●●●●●○	Rich, burgundy blooms; plants were healthy but starting to get leggy
<i>Petunia</i> × <i>hybrida</i> (Grandiflora) 'Ultra White'	12–14"	36–42"	●●●●●○	Very full, very vigorous plants with lots of large, pure white blooms
<i>Petunia</i> × <i>hybrida</i> (Milliflora) 'Fantasy Blue'	8–10"	20–24"	●●●●○○	Velvet blue, small blooms; low-growing plants do not sprawl to the extent that 'Wave' petunias do
<i>Petunia</i> × <i>hybrida</i> (Spreading) 'Shock Wave Rose'	6–10"	28–30"	●●●○○○	Early blooming; rose blooms with white throats; flowers were not as abundant or large as preferred; aster yellows problem
<i>Petunia</i> × <i>hybrida</i> (Spreading) 'Wave Blue'	6–8"	36–42"	●●●○○○	Rich blue flowers; proven performer but struggled with aster yellows this year
<i>Petunia</i> × <i>hybrida</i> (Spreading) 'Wave Purple'	6–8"	28–32"	●●●○○○	Lustrous purple flowers; all-time favorite but struggled with aster yellows this year
<i>Portulaca grandiflora</i> (Moss Rose) 'Margarita Mix'	4–8"	8–10"	●○○○○○	Compact plants struggled in cool weather; only a few blooms
<i>Portulaca grandiflora</i> (Moss Rose) 'Sundial Orange'	6–8"	10–14"	●○○○○○	More vigorous and free flowering than 'Margarita', but still a weak performance this cool summer
<i>Rudbeckia hirta</i> 'Becky Mix'	8–10"	8–12"	●○○○○○	Weak plants
<i>Rudbeckia hirta</i> 'Cherry Brandy'	16–20"	16–18"	●●●○○○	Blooms were small; earthy, red blooms were unique but not especially showy; moderate vigor
<i>Rudbeckia hirta</i> 'Denver Daisy'	22–26"	20–24"	●●●●●●	First rudbeckia to bloom; vigorous plants; gorgeous, giant blooms; petals are gold with maroon centers; very showy

<i>Rudbeckia hirta</i> 'Indian Summer'	28–32"	24–28"	●●●●●○	Very large blooms; well-branched; bloomed late; looked wonderful in fall; free flowering; healthy plants
<i>Rudbeckia hirta</i> 'Irish Spring'	24–28"	14–18"	●●●○○○	Plants were healthy and uniform; moderate in vigor; golden petals with shiny green eyes
<i>Rudbeckia hirta</i> 'Prairie Sun'	20–24"	14–18"	●●●○○○	Very large blooms; attractive primrose tips on golden petals; green eyes
<i>Rudbeckia hirta</i> 'Tiger Eye Gold'	16–18"	18–20"	●●●●●○	Compact, well-branched plants are loaded with blooms; slow to get started but looks great in fall; fabulous border
<i>Salvia farinacea</i> 'Victoria'	24–28"	22–24"	●●●●●●	Healthy plants; lots of dense spikes of blue flowers; and old favorite; good for cut flowers
<i>Salvia patens</i> 'Blue Angel'	28–32"	20–24"	●●●●○○	Crystal blue, tubular flowers are eye-catching although not prolific; foliage is healthy and lemon-scented; plants starting to flop over in fall
<i>Salvia splendens</i> 'Salsa Mix'	12–16"	12–16"	●●●●●○	Healthy plants are full of densely flowered spikes in somewhat muted shades of purple, red, and white
<i>Senecio cineraria</i> (Dusty Miller) 'Silverdust'	12–14"	20–24"	●●●●●○	Healthy and vigorous; suitable border plant; silvery, finely cut foliage with velvety texture
<i>Tagetes erecta</i> (African marigold) 'Antigua Yellow'	12–14"	12–16"	●●●●●○	Dwarf plants are loaded with large yellow blooms; healthy plants; eye-catching; very early
<i>Tagetes erecta</i> (African marigold) 'First Lady'	22–24"	20–24"	●●●●●●	Plants are healthy, upright, and extremely uniform; clear yellow blooms are brilliant
<i>Tagetes erecta</i> (African marigold) 'Inca II Mix'	12–16"	14–18"	●●●○○○	Compact plants are loaded with blooms; strong stems; early; subject to aster yellows
<i>Tagetes erecta</i> (African marigold) 'Jubilee Mix'	20–24"	18–22"	●●●●○○	Plants are healthy, sturdy, and upright; lots of flowers, large blooms
<i>Tagetes erecta</i> (African marigold) 'Sweet Cream'	22–24"	20–24"	●●●●○○	Creamy white flowers; healthy plants, free flowering in fall
<i>Tagetes patula</i> (French marigold) 'Bonanza Bolero'	10–12"	14–16"	●●●●●●	Dwarf plants are full of fiery blooms; healthy plants; uniform; overall very attractive
<i>Tagetes patula</i> (French marigold) 'Disco Mix'	10–12"	12–14"	●●●○○○	Single-petal flowers; plants lack uniformity
<i>Tagetes patula</i> (French marigold) 'Durango Outback Mix'	12–16"	14–18"	●●●○○○	Attractive mix; uniform plants
<i>Tagetes patula</i> (French marigold) 'Durango Tangerine'	12–16"	14–18"	●●●●○○	Rich, tangerine-color blooms cover healthy plants; large blooms; uniform
<i>Tagetes patula</i> (French marigold) 'Gem Golden'	16–20"	20–24"	●●●○○○	Tiny flowers cover basal branched plants; weak stems

<i>Tagetes patula</i> (French marigold) 'Janie Mix'	8–10"	8–10"	●●○○○○	Weak plants; crested flowers; not many blooms
<i>Tagetes patula</i> (French marigold) 'Little Hero Fire'	8–10"	10"	●●○○○○	Early; weak plants; damaged by aster yellows; golden yellow-red blooms
<i>Tagetes patula</i> (French marigold) 'Little Hero Flame'	8–10"	10"	●●○○○○	Early; weak plants; damaged by aster yellows; orange-red blooms
<i>Tagetes patula</i> (French marigold) 'Little Hero Yellow'	8–10"	8–10"	●●○○○○	Early; weak plants; damaged by aster yellows; bright yellow blooms
<i>Tagetes patula</i> (French marigold) 'Safari Red'	10–12"	12–16"	●●●●○○	Large, golden red blooms; damaged by aster yellows; free flowering and uniform
<i>Tagetes patula</i> (French marigold) 'Sunburst Yellow Splash'	16–20"	18–22"	●●●●○○	Free flowering; bright golden yellow blooms; taller, more upright, and less mounded than other French varieties
<i>Verbena x hybrida</i> 'Quartz Mix'	8–10"	10–14"	●●○○○○	Low-growing plants; uniform; green leaves with flowers along edges
<i>Zinnia angustifolia</i> 'Crystal Orange'	10"	10–12"	●●○○○○	Plants lack vigor; bloom early; small, daisy-like blooms
<i>Zinnia elegans</i> 'Distance Mix'	16–18"	12–16"	●●●●○○	Uniform and healthy; nice mix of colors; semi-double and double blooms; strong basal branches
<i>Zinnia elegans</i> 'Magellan Mix'	14–16"	14–16"	●●●●○○	Vigorous and healthy plants adorned with large, double blooms; bright colors
<i>Zinnia elegans</i> 'Oklahoma Mix'	30–36"	24–26"	●●●○○○	Healthy plants; lots of flowers for cutting; blooms are globular and only 2" across; bright colors
<i>Zinnia elegans</i> 'Short Stuff'	12–14"	12–14"	●●●○○○	Double blooms; plants lack uniformity
<i>Zinnia elegans</i> 'Uproar Rose'	30–32"	22–24"	●●●●○○	Glorious, giant, rose-colored blooms; very long and strong stems for cutting; healthy plants
<i>Zinnia elegans</i> 'Zinnita Formula Mix'	8–12"	10"	●●○○○○	Very dwarf, mounded plants with double flowers; lacks uniformity and vigor
<i>Zinnia elegans</i> 'Zowie! Yellow Flame'	24–28"	20–24"	●●●●●●	Plants are loaded with blooms; semi-double flowers with yellow tips and magenta centers; long stems for cutting
<i>Zinnia hybrida</i> 'Profusion White'	12–14"	12–14"	●●●●○○	White daisy-like flowers; less vigorous than 'Zahara'
<i>Zinnia marylandica</i> 'Zahara Yellow'	16–18"	18–22"	●●●●●●	Very uniform; free flowering; yellow blooms with a tinge of chartreuse; single, daisy-like flowers; vigorous

<sup>2</sup>Varieties were evaluated for appearance, uniformity, health, vigor, and bloom number on 16 August and 23 September. Varieties were given a final rating of 1–6, with 1 = poor and 6 = excellent. Plants were measured for height and spread on 23 September.



## Noteworthy Flower Varieties for 2009

---



Annual flower trial bed



Annual flower trial bed ('Indian Summer' rudbeckia in foreground)



*Antirrhinum majus* (Snapdragon) 'La Bella Mix'



*Capsicum annuum* 'Chilly Chili'



*Cleome hasslerana* (Spider Flower) 'Sparkler Mix'



*Cosmos bipinnatus* 'Sonata Mix'



# Noteworthy Flower Varieties for 2009

---



*Dahlia pinnata* 'Phantom of the Opera'



*Dianthus barbatus* 'Amazon Neon Purple'



*Dianthus chinensis* 'Telstar Mix'



*Gazania splendens* 'Kiss Frosty Mix'



*Nicotiana sylvestris* (Flowering tobacco)  
'Only the Lonely'



*Petunia × hybrida* (Grandiflora)  
'Dreams Appleblossom'



# Noteworthy Flower Varieties for 2009

---



*Petunia × hybrida* (Grandiflora) 'Prism Sunshine'



*Petunia × hybrida* (Grandiflora) 'Supercascade Rose'



*Rudbeckia hirta* 'Denver Daisy'



*Rudbeckia hirta* 'Tiger Eye Gold'



*Salvia farinacea* 'Victoria'



*Salvia patens* 'Blue Angel'



# Noteworthy Flower Varieties for 2009

---



*Senecio cineraria* (Dusty Miller) 'Silverdust'



*Tagetes erecta* (African marigold) 'Antigua Yellow'



*Tagetes erecta* (African marigold) 'First Lady'



*Tagetes patula* (French marigold) 'Bonanza Bolero'



*Zinnia elegans* 'Zowie! Yellow Flame'



*Zinnia marylandica* 'Zahara Yellow'