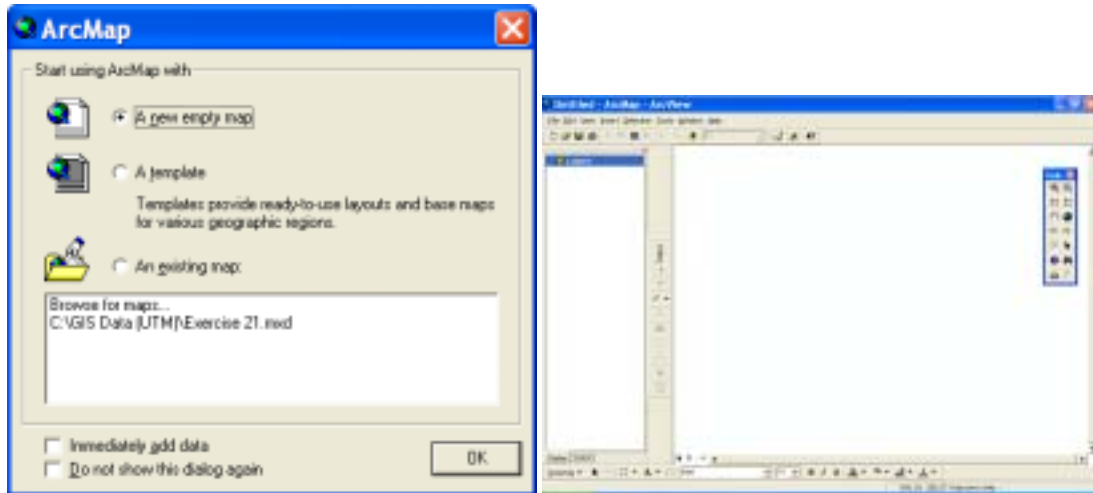
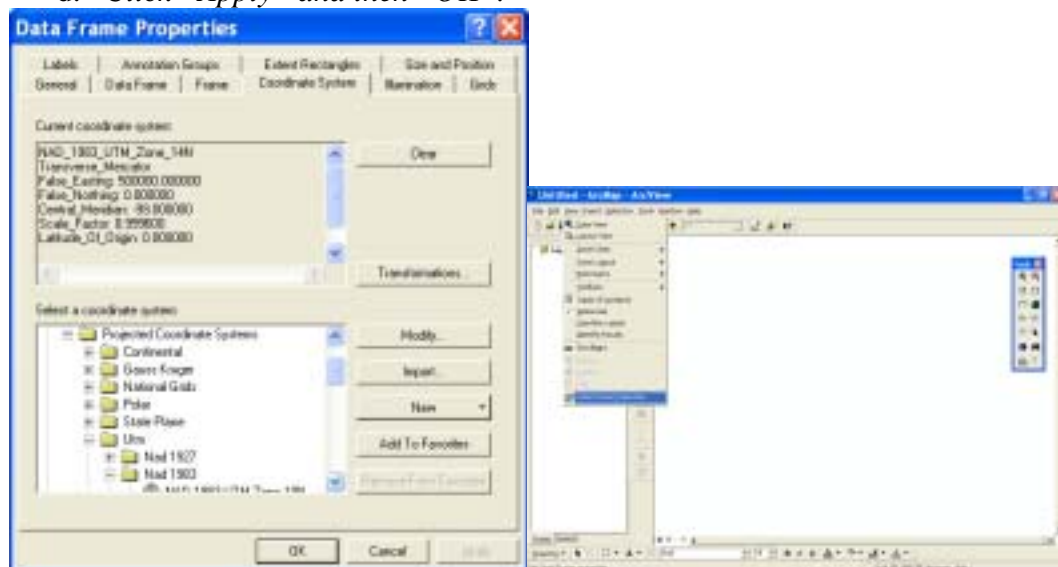


Geo-Referencing Images in ArcView 8.3 ArcMap – Exercise 26

1. Start ArcMap. The “Start using ArcMap” window will display. Click “OK”.




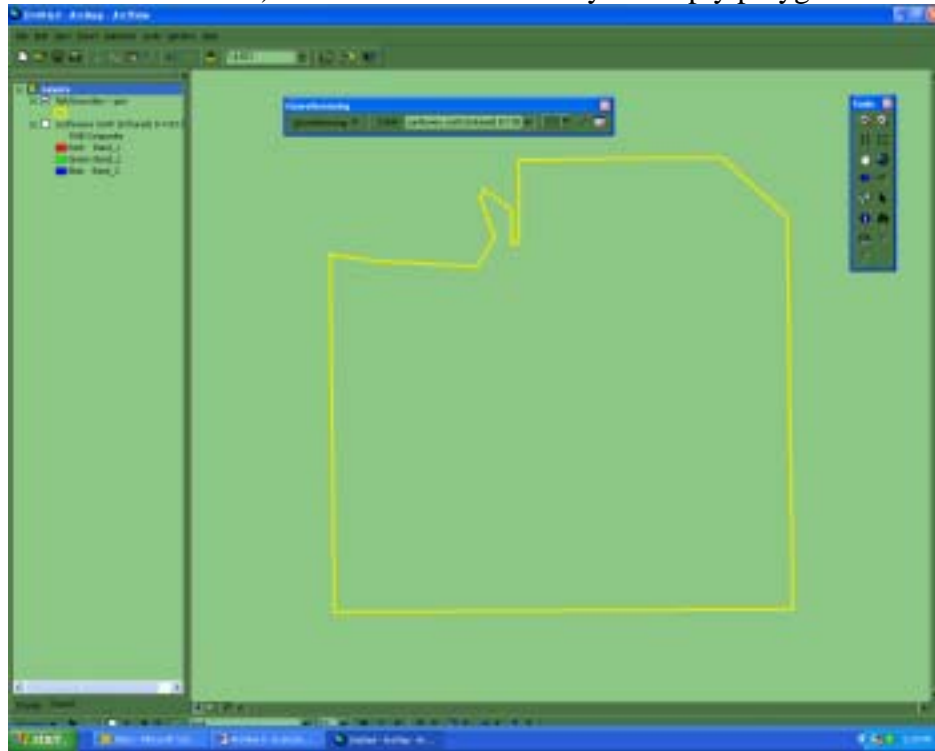
2. The Data View window will be displayed without layers.
3. Set the Data Frame Properties as follows:
 - a. From the View pulldown menu choose “Data Frame Properties”
 - b. Choose the “Coordinate System” tab.
 - c. Navigate to the “Predefined, Projected Coordinate Systems UTM, Nad 1983” folder icon, and choose “NAD 1983 UTM Zone 14” map projection.
 - d. Click “Apply” and then “OK”.



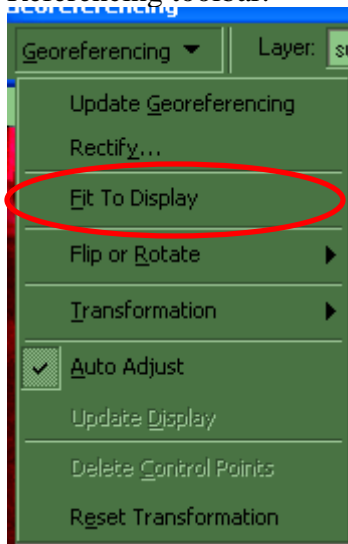
4. Add the “Geo-Referencing” toolbar from: View>Toolbars>Georeferencing.

5. Add GIS layers to the data frame as follows:

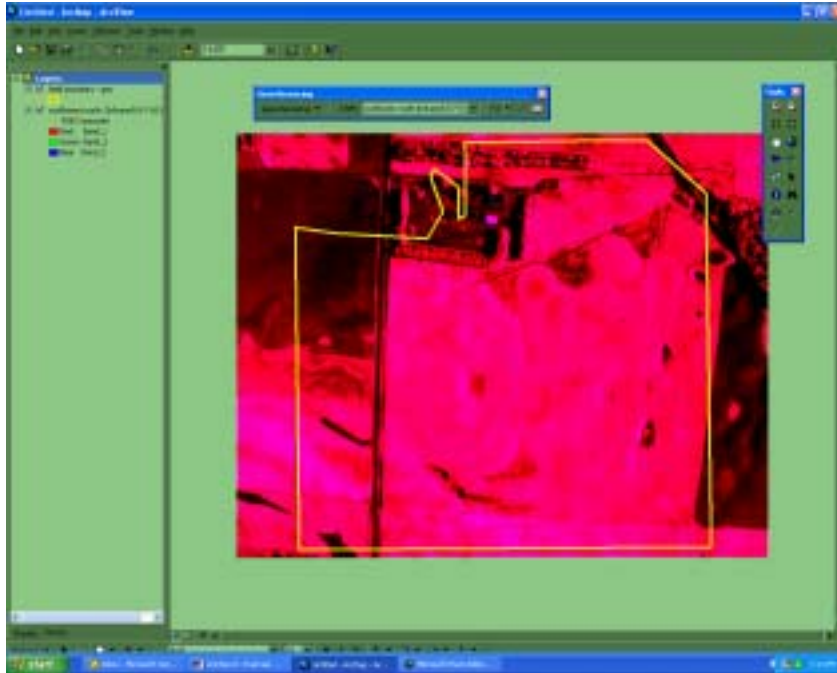
- a. Click the  “Add Data” button. Add the shapefile that will be used to geo-reference the image (Field boundary) and the image. (Sunflowers north - Infrared). Make the field boundary an empty polygon.



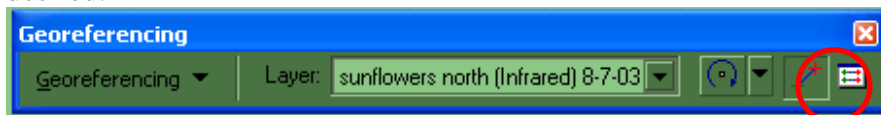
6. To begin the geo-referencing process choose “Fit to Display” from the Geo-Referencing toolbar.



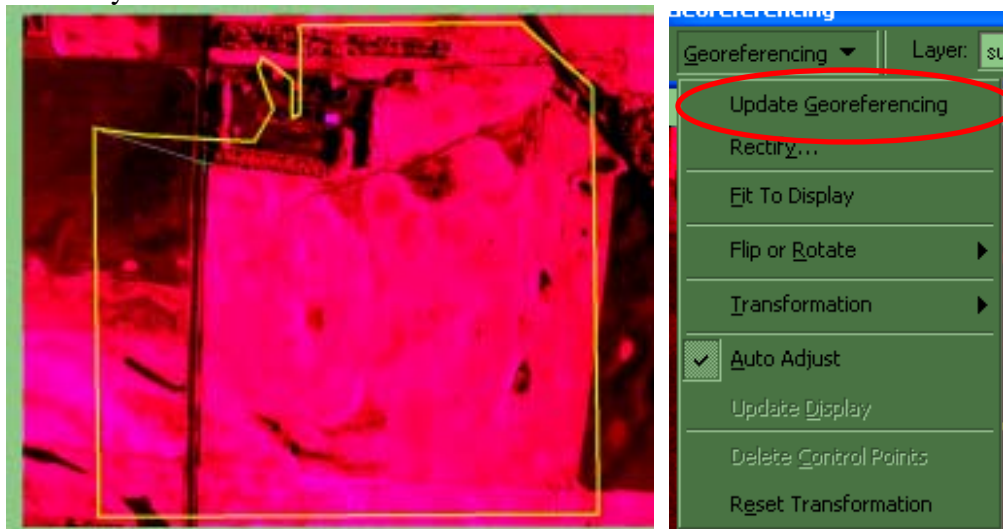
7. The image will be displayed in the center of the map view.



8. Use the “Add Control Points” feature to move the image to the exact location desired.



9. Click on a point on the image first and then on a corresponding point on the boundary.



10. When you have located the image to the desired location click “Update Georeferencing”.