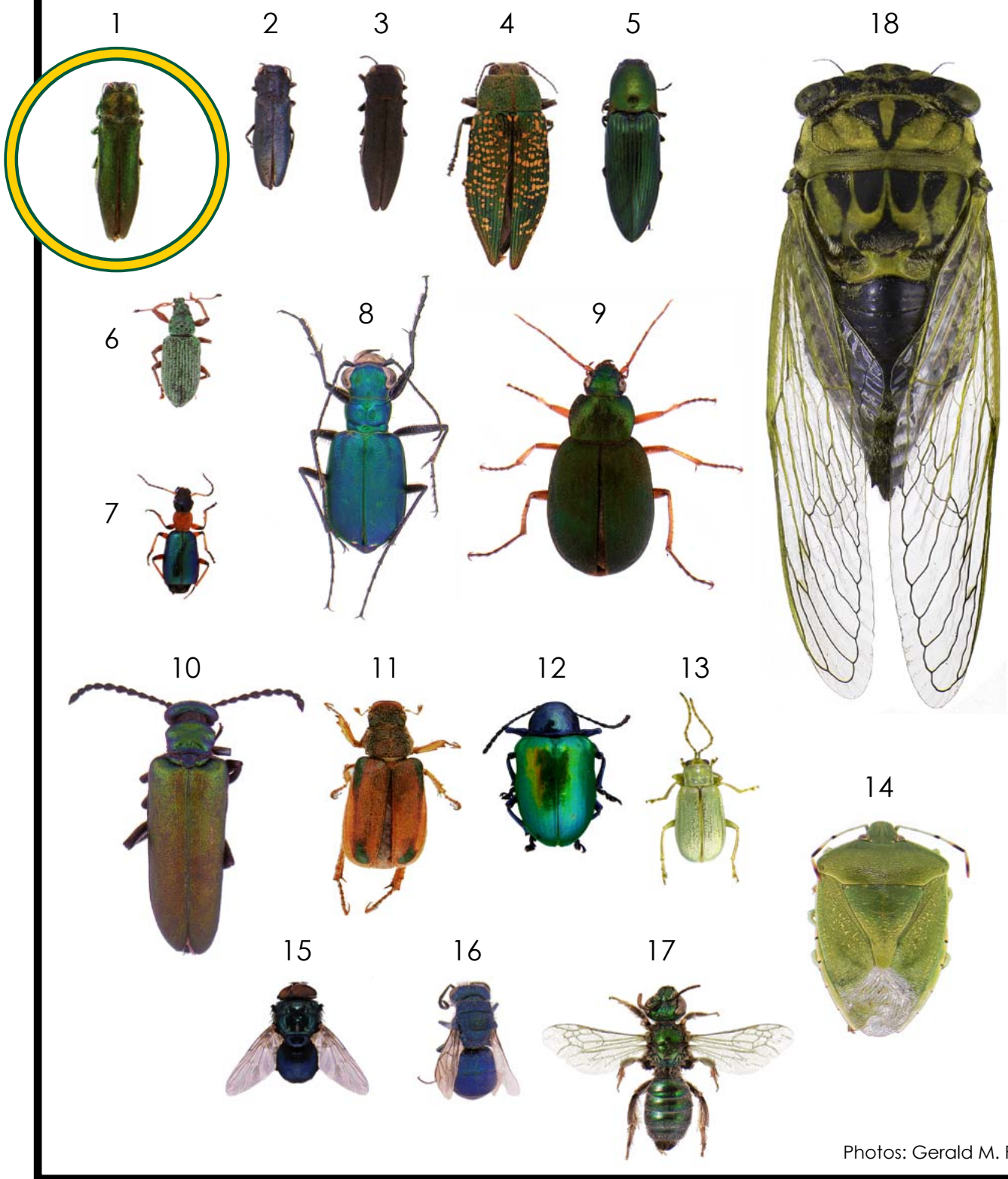


Insects Frequently Confused with **Emerald Ash Borer** in North Dakota



Photos: Gerald M. Fauske

Emerald Ash Borer

The Emerald ash borer is a beetle (Order Coleoptera). Beetles are recognized by having shell-like front wings called elytra. When the wings are folded, they meet forming a median line down the back. Currently, Emerald ash borer has not been found in North Dakota.

Metallic wood-boring beetles

(Family Buprestidae)

Compact beetles with short legs and "saw-toothed" antennae

1. **Emerald ash borer**
Agilus planipennis Fairmaire
2. Honeysuckle borer
Agilus cyanescens Ratzeburg
3. Bronze birch borer
Agilus anxius Gory
4. Green metallic woodborer
Buprestis confluenta Say

Click beetles

(Family Elateridae)

Beetles with a flexible joint between thorax and abdomen

5. Green click beetle
Ctenicera species

Weevils

(Family Curculionidae)

Beetles with a "snout" and elbowed antennae

6. Green Polydrusus weevil
Polydrusus species

Ground beetles

(Family Carabidae)

Long-legged, agile beetles with long antennae

7. Calleida beetle
Calleida species
8. Six-spotted tiger beetle
Cicindela sexguttata Fabricius
9. Green pubescent ground beetle
Chlaenius sericeus Forster

Blister beetles

(Family Meloidae)

Soft-winged beetles with head narrowed behind eyes

10. Nuttall blister beetle
Lytta nuttalli Say

NDSU encourages you to use and share this content, but please do so under the conditions of our Creative Commons license. You may copy, distribute, transmit and adapt this work as long as you give full attribution, don't use the work for commercial purposes and share your resulting work similarly. For more information, visit www.ag.ndsu.edu/agcomm/creative-commons.

For more information on this and other topics, see www.ag.ndsu.edu

County commissions, North Dakota State University and U.S. Department of Agriculture cooperating. North Dakota State University does not discriminate on the basis of age, color, disability, gender expression/identity, genetic information, marital status, national origin, public assistance status, sex, sexual orientation, status as a U.S. veteran, race or religion. Direct inquiries to the Vice President for Equity, Diversity and Global Outreach, 205 Old Main, (701) 231-7708. This publication will be made available in alternative formats for people with disabilities upon request, (701) 231-7881.

Scarab beetles

(Family Scarabaeidae)

Beetles with lopsided antennal club and flattened front legs

11. Green-marked chafer
Dolichonyx subvittatus Capiomont

Leaf beetles

(Family Chrysomelidae)

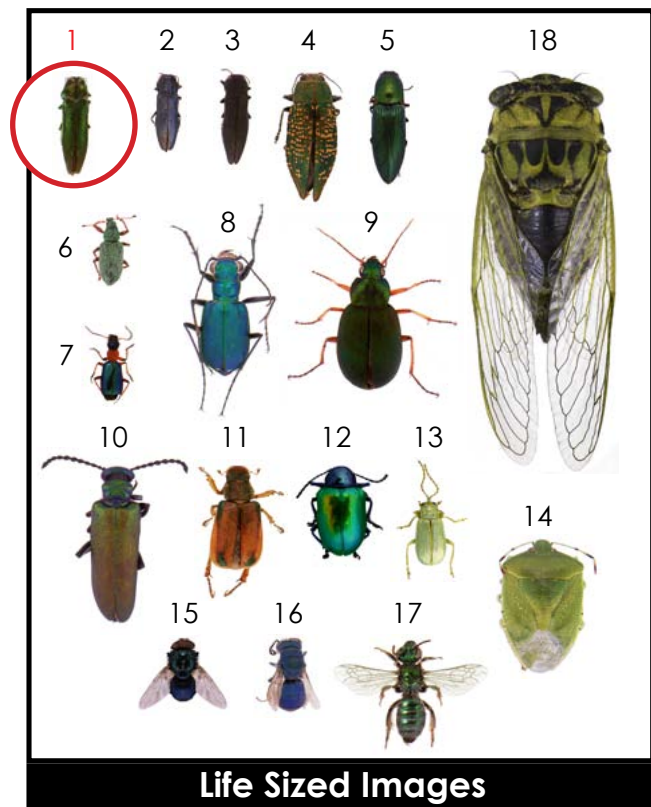
Oval beetles with long antennae

12. Dogbane beetle
Chrysochus auratus (Fabricius)
13. Northern corn rootworm beetle
Diabrotica barberi Smith & Lawrence

Other Insects

Front wings at least partially membranous

14. Green stink bug (Hemiptera: Pentatomidae)
15. Blow fly (Diptera: Calliphoridae)
16. Cuckoo wasp (Hymenoptera: Chrysididae)
17. Sweat bee (Hymenoptera: Halictidae)
18. Annual cicada (Hemiptera: Cicadidae)



Life Sized Images