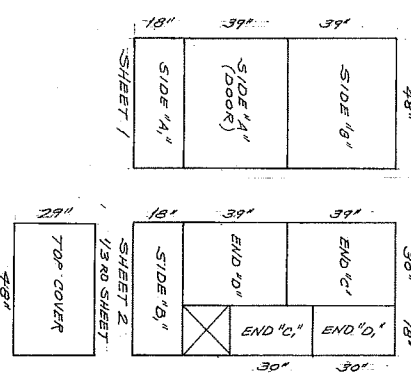


NOTE: SEAL ALL SURFACES AND EDGES OF PLYWOOD PANELS WITH 1 COAT OF WOOD PRIMER AND 1 COAT OF ENAMEL PAINT FOR DISINFECTON PURPOSES

1/2" PLYWOOD TOP COVER (OPEN OR CLOSE MANUALLY TO OPERATE DRYER AT ABOUT 90°F)

PRE-DRILL PLYWOOD FOR 1/8" X 1" SELF-DRILLING SELF-TAPPING SCREWS, APPROX 12" APART

THIS SHEET CUTTING PATTERN (1/2" EXTENSION TYPE PLYWOOD OR EQUAL)



CUT OPENING TO FIT 5000 WATT 230 V ADJUSTABLE TOWERS, ELEC. HEATER

VIEW OF SIDES 1/2" X 1/2"

SEE EXPANDED METAL FLOOR DETAIL

1/2" X 4" PIPE, FULL FIN, TYPE HINGES

1/2" X 50" TUBING (FRAME MEMBERS)

PORTABLE DRYER WARMER NO 871-7-5 FOR NEW BORN CALVES	
SCALE: 1/2" = 1'	APPROVED BY: DEYTER JOHNSON
DRAWN BY: X.C.C.	REVIEWED:
DATE: 12/10/63	DESIGNED BY: M.R. KAY, HARVEY MARSHALL, N.D.
PREPARED BY: M.D.S. EXTENSION AGR. ENG. DEPT.	ENGINE NUMBER: SH. 1061