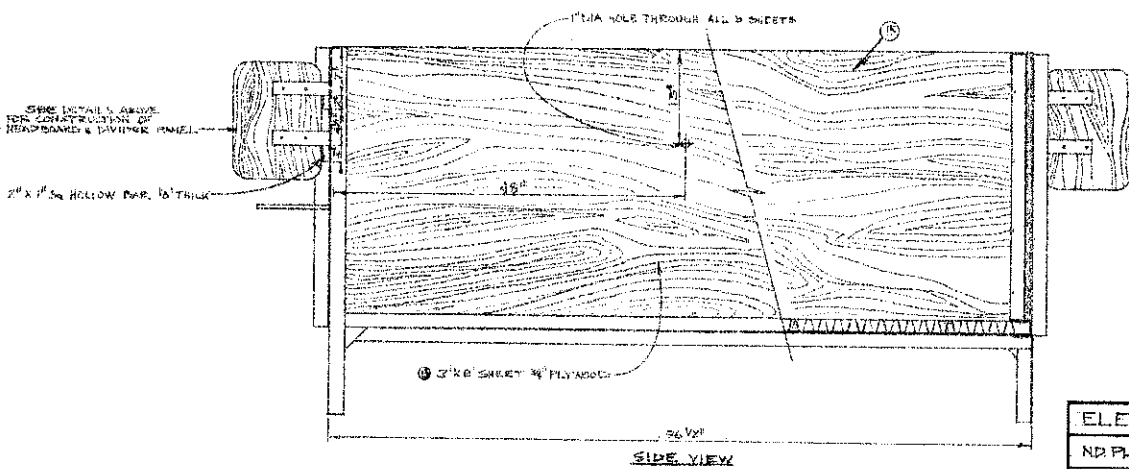
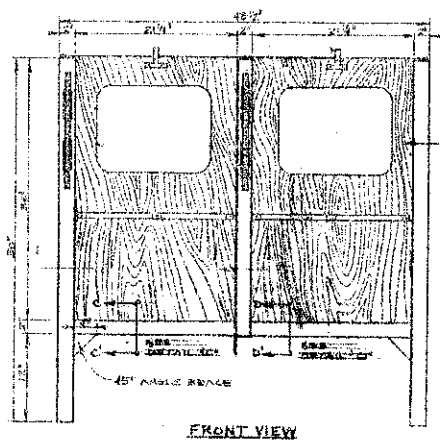
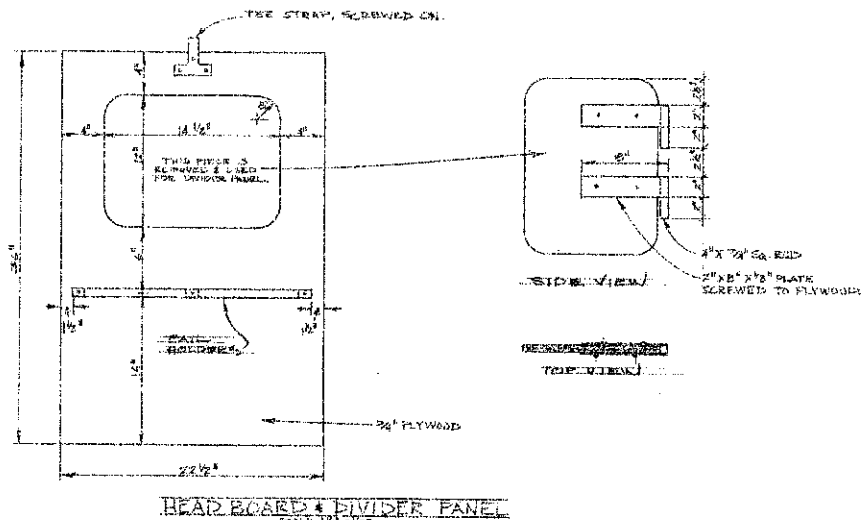
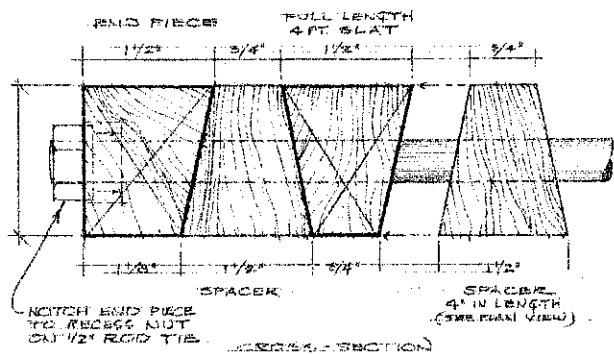


CUTTING LIST

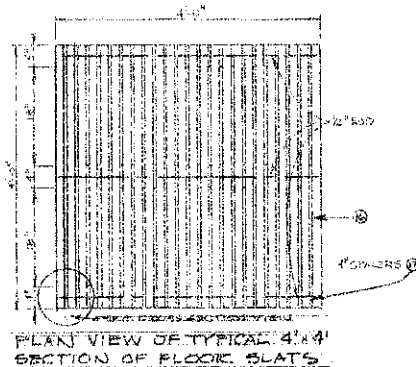
ITEM	DESCRIPTION	AMOUNT
1	2x2 ANGLE, 1/2" THICK, CUT 24\"/>	
2	2x2 ANGLE, 1/2" THICK, CUT 24\"/>	
3	2x2 ANGLE, 1/2" THICK, CUT 48\"/>	
4	2x2 ANGLE, 1/2" THICK, CUT 48\"/>	
5	2x2 ANGLE, 1/2" THICK, CUT 48\"/>	
6	2x2 ANGLE, 1/2" THICK, CUT 48\"/>	
7	2x2 ANGLE, 1/2" THICK, CUT 48\"/>	
8	1/2\"/>	
9	1/2\"/>	
10	1/2\"/>	
11	1/2\"/>	
12	1/2\"/>	
13	1/2\"/>	
14	1/2\"/>	
15	1/2\"/>	
16	1/2\"/>	
17	1/2\"/>	
18	1/2\"/>	
19	1/2\"/>	
20	1/2\"/>	



ELEVATED CALF STALLS
 ND PLAN 871-2-7 SCALE 1"=1'-0"
 NDSU EXTENSION SERVICE STAFF
 AUGUST 19, 1975 DR. BY G.S.

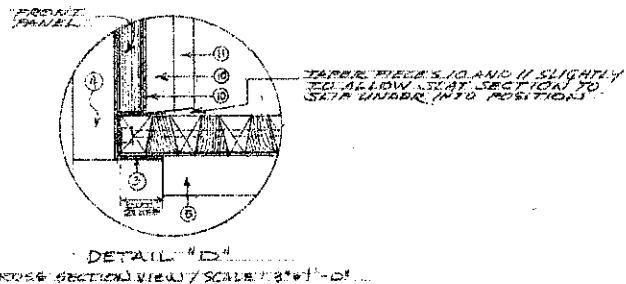


VIEW OF WOOD (OAK) SLATS AND TIE ROD.
SCALE: ACTUAL SIZE.

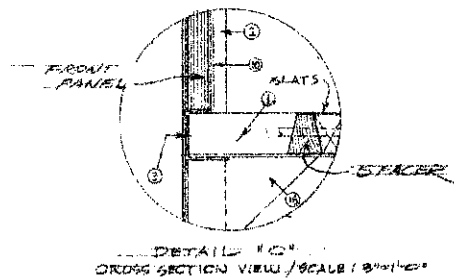


PLAN VIEW OF TYPICAL 4x4 SECTION OF FLOOR SLATS

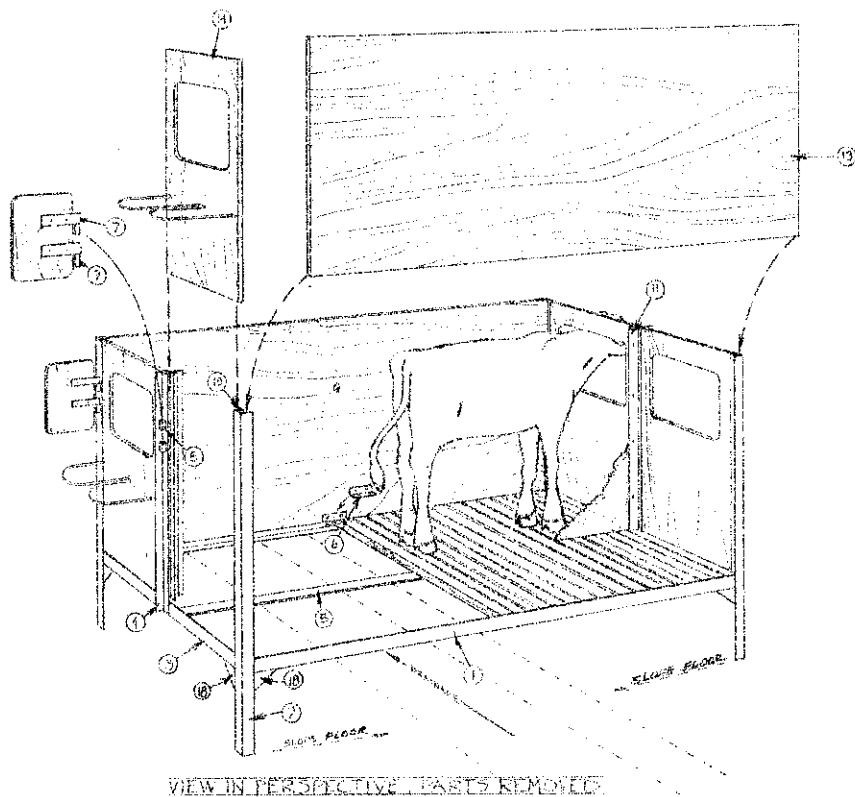
NOTE: EXPANDED METAL FLOOR AND COMMERCIAL ALUMINUM HOG FLOOR SLATS WERE TRIED AND FOUND NOT AS SATISFACTORY AS OAK WOOD SLATS.



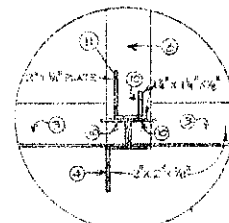
DETAIL "D"
CROSS SECTION VIEW / SCALE: 3/4" = 1"



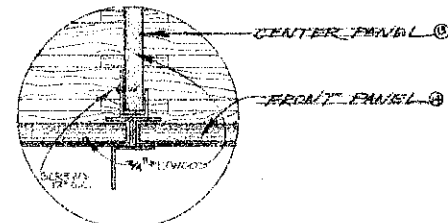
DETAIL "C"
CROSS SECTION VIEW / SCALE: 3/4" = 1"



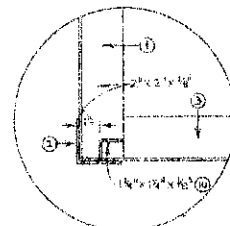
VIEW IN PERSPECTIVE PARTS REMOVED



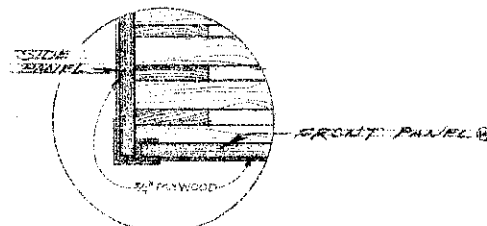
DETAIL "B-1"
PLAN VIEW / SCALE: 3/4" = 1"



DETAIL "B-2"
PLAN VIEW / SCALE: 3/4" = 1"



DETAIL "A-1"
PLAN VIEW / SCALE: 3/4" = 1"



DETAIL "A-2"

ELEVATED CALF STALLS	
NO. PLAN 871-2-7	SR. 2 of 2
NDSU EXTENSION SERVICE	
AUGUST 19, 1978	DR. BY G. S.