

SUMMER AIR VENT...  
 OUP OPENING TO FIT  
 2 1/4" x 1 1/4" x 95" ANGLE  
 BOOT, SEE BACK AND  
 SHEET 2 FOR DETAILS.

IN ADDITION TO AIR  
 VENTS, COLLECTOR  
 SHOULD BE COVERED  
 WITH 1/2" x 4" x 8" SHEET  
 OF PLYWOOD OR SOME  
 OTHER SUITABLE MAT-  
 TER TO PREVENT  
 EXTREME TEMPERATURE  
 BUILD UP IN COLLECTOR  
 WHEN NOT IN USE.  
 USE SCREEN TURN  
 BUCKLE TO HOLD  
 PLYWOOD COVER.

EXTERIOR GLAZING  
 1 X 2 FRAMING  
 1ST LAYER OF  
 GLAZING

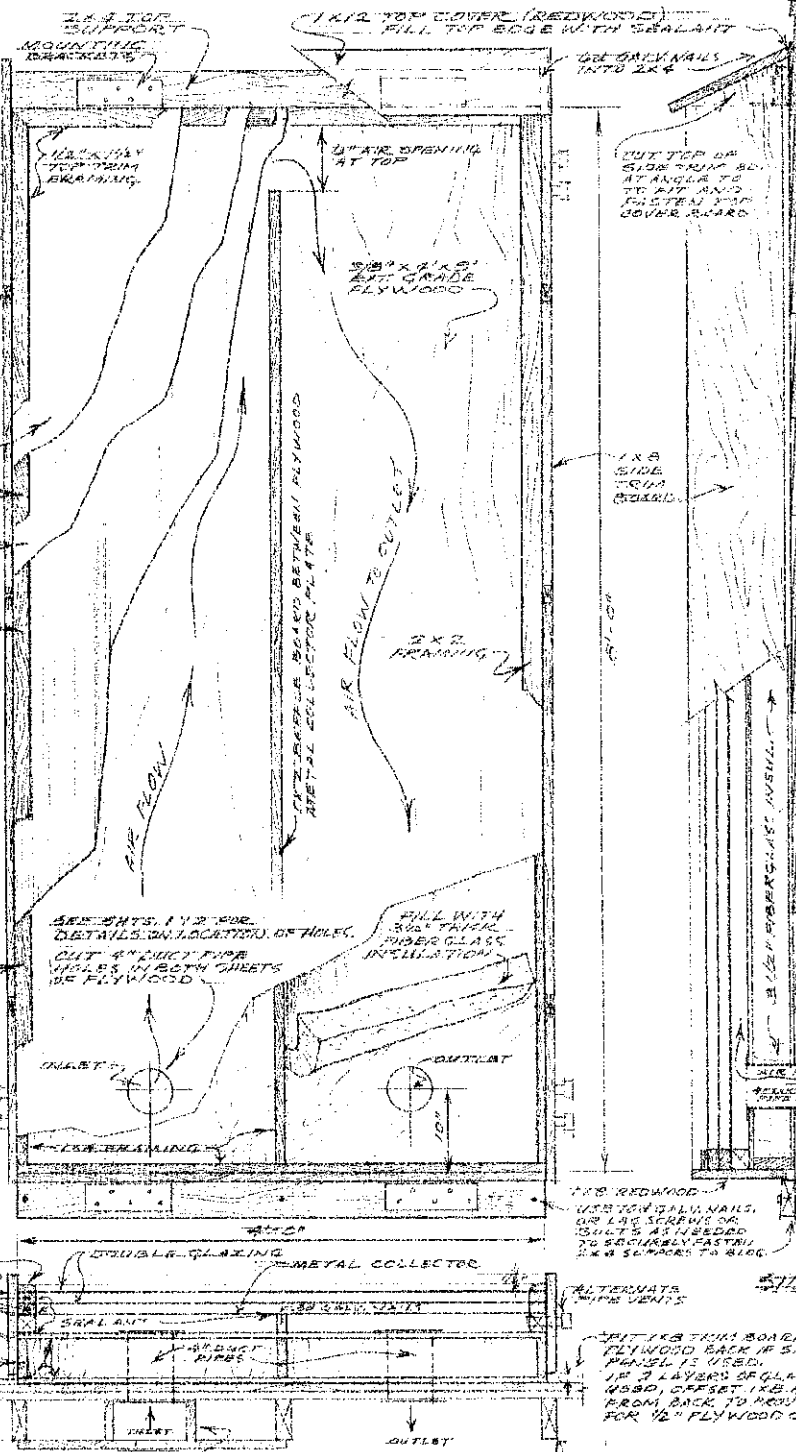
2 X 2 FRAMING

**NOTE:**  
 SINGLE LAYER OF  
 GLAZING MAY BE  
 USED. DOUBLE  
 GLAZING WILL  
 IMPROVE EFFICIENCY  
 OF SOLAR PANEL.  
 PRE-DRILL HOLES  
 IN GLAZING PANELS  
 SLIGHTLY LARGER  
 THAN 3/4 GALV NAIL  
 USED TO FASTEN  
 PANELS TO WOOD  
 FRAMING. HOLES SPACED  
 TO BE 6" APART OR  
 BEAD OF SEALANT IN  
 EACH EDGE OF WOOD  
 BEFORE SETTING  
 GLAZING IN PLACE.  
 APPLY ANOTHER BEAD  
 OF SEALANT BETWEEN  
 GLASS PANEL AND  
 1 X 2 FRAMING.

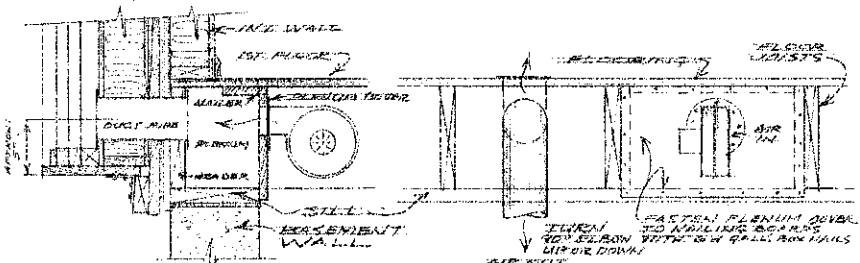
2 X 2 FRAMING

**ALTERNATE AIR VENTS -**  
 1 X 2 BRASS OR  
 BRASS PIPE MOUNTED  
 INTO 2 X 2 FRAME.  
 PIPE THREADED TO  
 TAKE 1/4" GALV NUTS  
 TO CLAMP VENTS  
 DURING WINTER USE.  
 USE 2 VENTS AT  
 EACH CORNER.

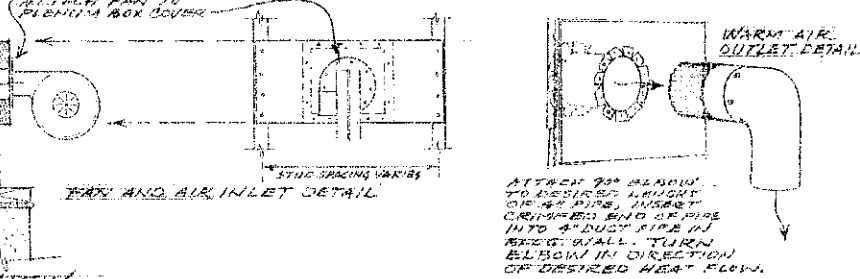
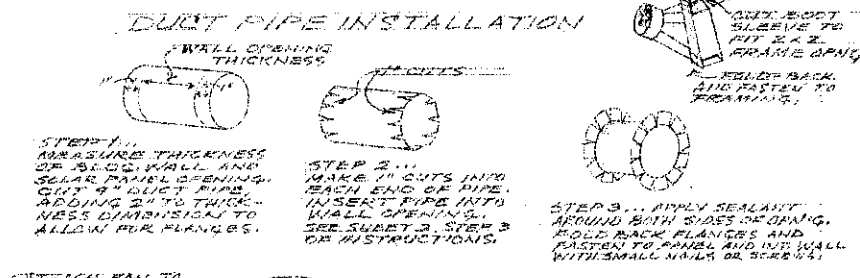
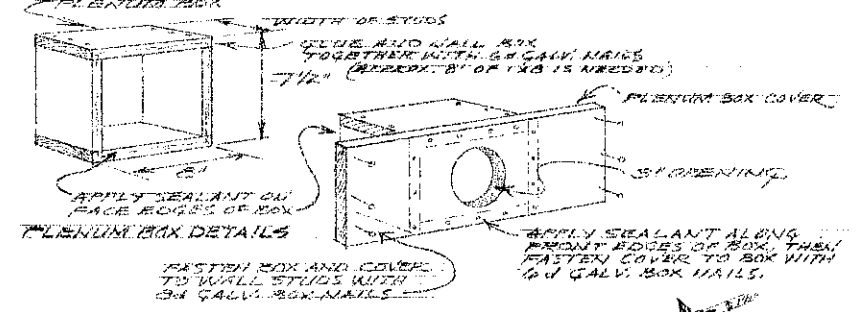
1/2" x 1 1/4" x 95" TRIM  
 1 X 1/2" TRIM ED. (ROUND)  
 7/8" IS BETWEEN GLAZING  
 1/4" x 1 1/4" x 95" ANGLE  
 BOOT  
 1 X 2 FRAMING  
 1/2" PLYWOOD SHEETS



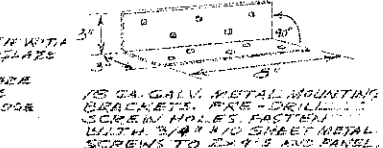
**TYPICAL RESIDENTIAL HOME INSTALLATION.**



**NOTE:**  
 THERMISTAT CONTROL SET TO START AT 110°F AND SHUT OFF AT  
 75°F IS RECOMMENDED TO PREVENT HIGH STAGNATION TEMPERATURES.  
 CAUTION! LOCAL ELECT CODES MUST BE FOLLOWED. SEE YOUR LOCAL  
 ELECTRICIAN OR ELECTRICAL SUPPLIER.



SEAL 1/2" TRIM BOARD FLUSH WITH  
 FLYWOOD BACK IF SINGLE GLASS  
 PANEL IS USED.  
 IF 2 LAYERS OF GLAZING ARE  
 USED, OFFSET 1/2" BOARD  
 FROM BACK TO PROVIDE EDGE  
 FOR 1/2" FLYWOOD COVER.



**2 1/2' x 3' INSULATED SOLAR PANEL**

N.D. PLAN #919-3-1

SCALE \_\_\_\_\_ DRAWN BY ARCELA COSSETTE REVISION \_\_\_\_\_

PREPARED BY \_\_\_\_\_

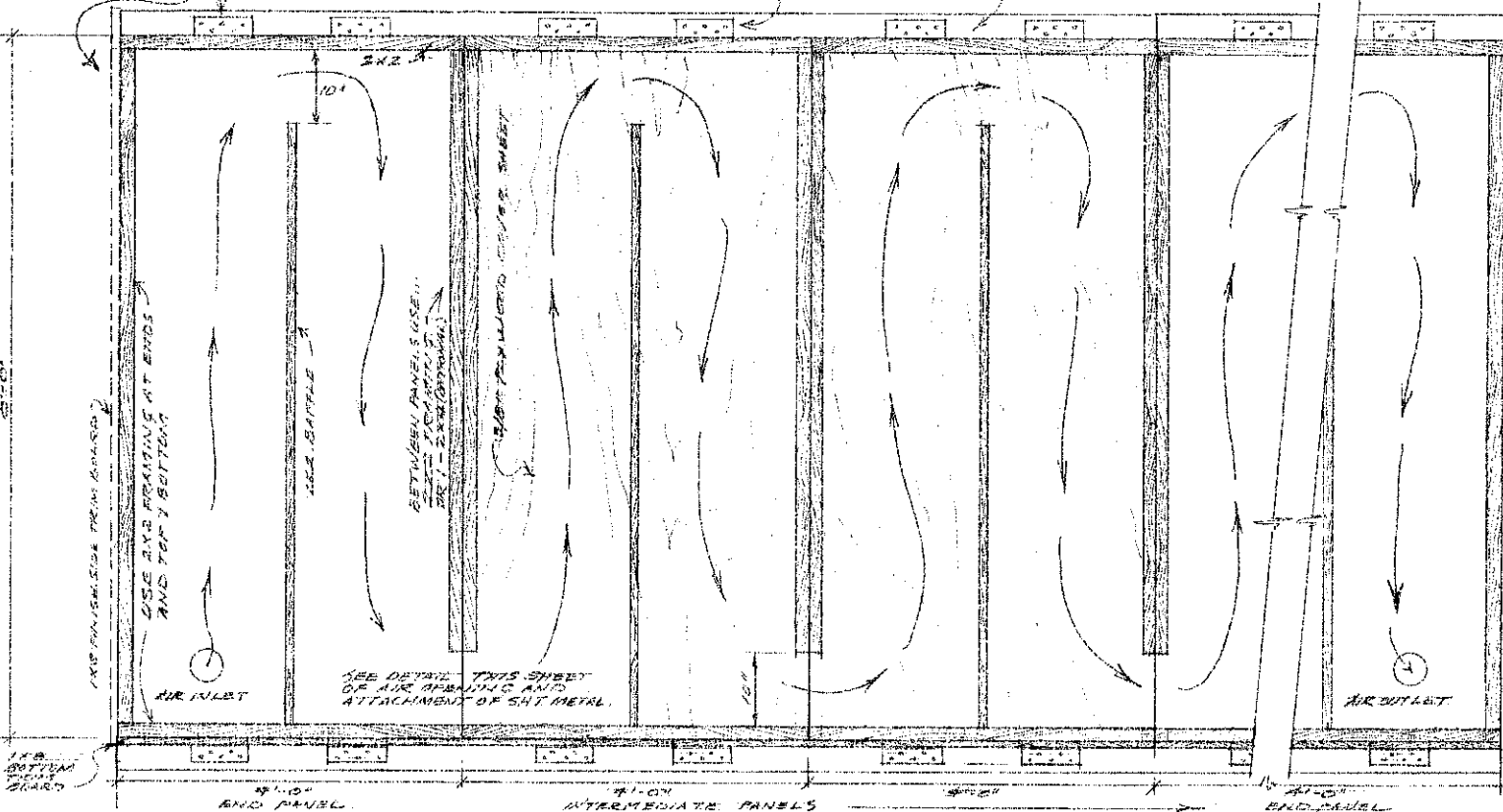
KID'S CI EXTENSION AG, ENGR. DEPT.

DATE APR '81 APPROVED BY LEONARD VOGEL DRAWING NUMBER SHT. 1 OF 3  
 EXT. ENERGY SPECIALIST



NOTE: OMIT SUMMER WARM AIR VENT FOR MULTIPLE UNITS. HOWEVER, A PLYWOOD COVER OR HEAVY WHITE CANVAS SHOULD BE USED TO PREVENT OVER HEATING.

2x4 TOP & BOTTOM SUPPORTS: USE 12' LONG FOR 3-4 UNITS. ADD ADDITIONAL LENGTH AS NEEDED.



NOTES:  
 1. CONSTRUCTION PROCEDURE IS DEPICTED STEP BY STEP ON SHEET 2.  
 2. BUILD EACH UNIT SEPARATELY AND MOUNT TO BUILDING WALL, FOLLOWING EACH STEP CAREFULLY. LENGTH OF TOP AND BOTTOM SUPPORTS WILL BE DETERMINED BY THE NUMBER OF PANELS DESIRED.  
 3. THE DRAWINGS ON THIS SHEET INDICATE CONSTRUCTION STAGE AT STEP 4 ON SHEET 2, SHOWING THE PLYWOOD BASE AND THE 2x2 FRAMING ATTACHED WITH AIR SPACES SHOWN IN THEIR PROPER LOCATION.

PANELS SHOULD BE BOLTED TOGETHER AT STEP 3 CONSTRUCTION STAGE. USE 3 - 1/4" DIA. BOLTS WITH WASHERS. DRILL HOLES IN 1x4'S, 12" FROM TOP AND BOTTOM, AND AT CENTER.

BE SURE TO LAY SEALANT BRAD AT JOINT BETWEEN PANELS JUST BEFORE 2x2 FRAMING IS ATTACHED TO PLYWOOD SURFACE.

SEE SHEET 1 FOR DETAILS OF COOL AIR INLET AND WARM AIR OUTLET. SEE PAN SIZE GUIDE BELOW.

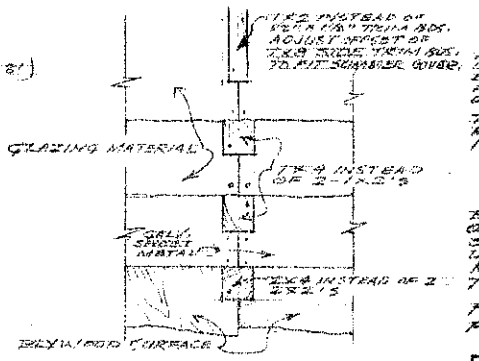
PAN SIZE GUIDE

PAN SIZE	CFM	BLOWER CFT. NOS.
1 PANEL	140 CFM	#20610
2 TO 3 PANELS	148 CFM	#90496
4 TO 5 PANELS	350 CFM	#20841

WALL OPENING SIZE / OPENING COEFF.	INLET	OUTLET	ANY OTHER
140 CFM	4" x 4"	3" HOLE	
148 CFM	4" x 4"	3" HOLE	
350 CFM	6" x 6"	5" HOLE	

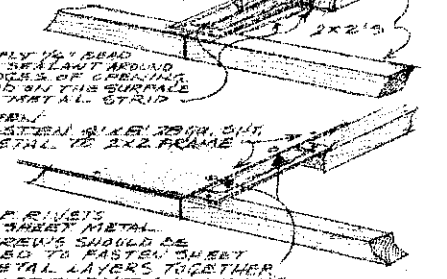
- LIST OF MATERIALS FOR 3-PANEL UNIT... WOOD SPEC: PINE, FIR, HEMLOCK OR REDWOOD**
1. 3/8" x 4" x 8' PLYWOOD, INTERIOR A-C GRADE (INT. WITH EXT. GLUE) OR EXT. C-C GRADE
  2. 1/2" x 12" x 12' AND 1/2" x 12" x 8' PINE OR HEMLOCK (FRAMING MEMBERS)
  3. 2x2x12 AND 6x... 2x2x8 (OR 2... 2x2x8) AND 2... 2x4x8 FRAMING.
  4. 2x2x7 BATTLE BOARDS
  5. 2x2x12x12 FRAMING BETWEEN GLAZING LAYERS (OR 4... 1x2x12, 4... 1x2x8, 4... 1x4x8)
  6. 1/2" x 12" x 12' AND 4... 1/2" x 12" x 8' TOP TRIM BOARDS (EDGE STOPS OR LATTICE)
  7. OPTIONAL TOP TRIM... USE 2... 1x2x12, AND 4... 1x2x8
  8. 2x12x12x12 FIR OR REDWOOD (TOP AND BOTTOM SUPPORTS)
  9. 1/2" x 24" x 4' GALV. SHEET METAL (COLLECTOR PLATE)
  10. 4' x 8' SHEETS OF GLAZING MATERIAL (SEE TYPES BELOW)
  11. 24" x 8" STRIPS OF 3/4" FIBERGLASS INSULATION (90% R.F.) SEE SHEET 2 FOR CAUTION NOTE.
  12. 2 FT. OF 4" DIA. PIPE, 1-90° ELBOW, EITHER ALUM. OR GALV. METAL.
  13. SEE SHEET 1 FOR DETAILS OF PLENUM BOX. APPROX. 1x5 x 4' IS NEEDED.

ALTERNATE LUMBER USE AT JOINT BETWEEN PANELS



AIR OPENING BETWEEN PANELS DETAIL

USE 1/2" BATTEN BOARD OVER TOP FRAMING



- TYPES OF GLAZING MATERIALS**
1. 1/4" THICKNESS, 15% LITE, PREMIUM E-2 BEING FIBERGLASS
  2. AVAILABLE IN 3' x 6' OR 6' x 6' SIZES. MADE BY KILGALL SOLAR DIVISION, BOX 287, MANCHESTER, NEW HAMPSHIRE, 03105.
  3. 3/8" FLEXIGARD, 1/4" THICKNESS, CLEAR PROTECTIVE FILM.
  4. "FILON" 1/4" THICKNESS, FLEXIBLE PLASTIC.
- TYPES OF HEAT RESISTANT PAINTS**
1. "DURASOL" BAKERSHINE FLAT BLACK, 1/4" x 1/4"
  2. "SOLAR" BAKERSHINE FLAT BLACK, 1/4" x 1/4"
  3. "SOLAR" BAKERSHINE FLAT BLACK, 1/4" x 1/4"
  4. "SOLAR" BAKERSHINE FLAT BLACK, 1/4" x 1/4"
  5. "SOLAR" BAKERSHINE FLAT BLACK, 1/4" x 1/4"
  6. "SOLAR" BAKERSHINE FLAT BLACK, 1/4" x 1/4"
  7. "SOLAR" BAKERSHINE FLAT BLACK, 1/4" x 1/4"
  8. "SOLAR" BAKERSHINE FLAT BLACK, 1/4" x 1/4"
  9. "SOLAR" BAKERSHINE FLAT BLACK, 1/4" x 1/4"
  10. "SOLAR" BAKERSHINE FLAT BLACK, 1/4" x 1/4"

NOTE: INFORMATION GIVEN HEREIN IS FOR EDUCATIONAL PURPOSES. REFERENCE TO COMMERCIAL PRODUCTS OR TRADE NAMES IS MADE WITH NO DISCRIMINATION INTENDED AND NO ENDORSEMENT BY THE A.E.C. COOPERATIVE

EXTENSION SERVICE TO AGR. ENG. DEPT. IS IMPLIED.

**4'x8' INSULATED SOLAR PANEL**

W.D. PLAN #819-8-1	SCALE	DRAWN BY E. COZZETTA
PREPARED BY A.E.C. EXTENSION AGR. ENGR. DEPT.		REVISED
DATE APR '81	APPROVED BY LAMBERT YOGEL	DRAWING NUMBER SHT. 3 OF 3
	EXTENSION SERVICE SPECIALIST	