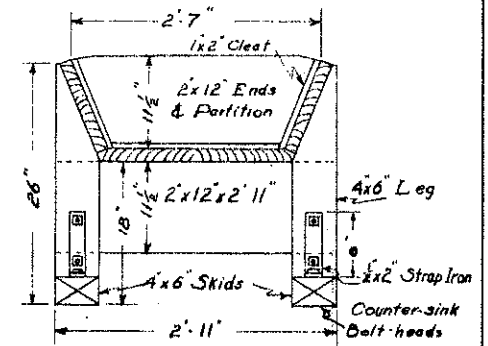
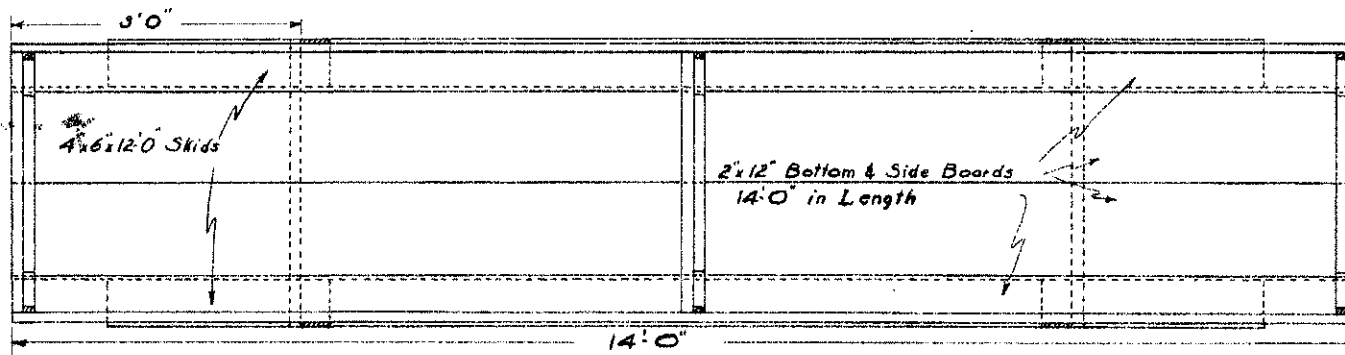


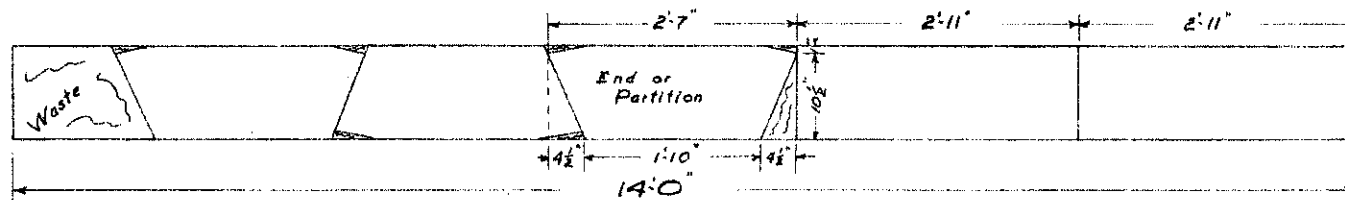
SIDE VIEW



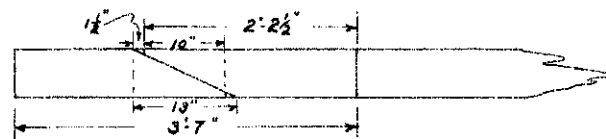
END SECTION



TOP VIEW



CUTS FOR ENDS, PARTITION, & LEG CROSSPIECES



CUTS FOR LEGS

BILL OF MATERIALS		
Pcs.	Size & Description	Ft. Cost
5	2x12x14.0	140 \$ 6.86
1	4x6x10.0	20 1.14
2	4x6x12.0 - Skids	48 2.74
1	1x2x12.0 for Cleats	2 .11
1*	6 d Nails - Common	.05
2*	16 d Nails - Common	10
4	1/2x2x8" Iron Angle Bracs	2.00
12	1/2x5" Mach. Bolts, 2 Wash.	60
4	1/2x6 1/2" Mach. Bolt, 2 Wash.	20
Cost of Materials		\$ 13.80
Labor - 6 hrs.		\$ 3.00
<b>TOTAL</b>		<b>\$ 16.80</b>

NORTH DAKOTA AGRICULTURAL COLLEGE  
DIVISION OF AGRICULTURAL EXTENSION  
STATE COLLEGE OF AGRICULTURE, NORTH DAKOTA

CATTLE FEED BUNK  
SCALE: 1"=1'-0" PLAN NO. 10772-3-1/2 DATE: SEPT. 1921  
DEPARTMENT OF AGRICULTURAL ENGINEERING  
DESIGNED BY H. M. McCOLLY  
APPROVED BY DEPT. OF ANIMAL HUSBANDRY, E. J. THOMPSON  
DRAWN BY C. F. K. TRACED BY C. F. K.