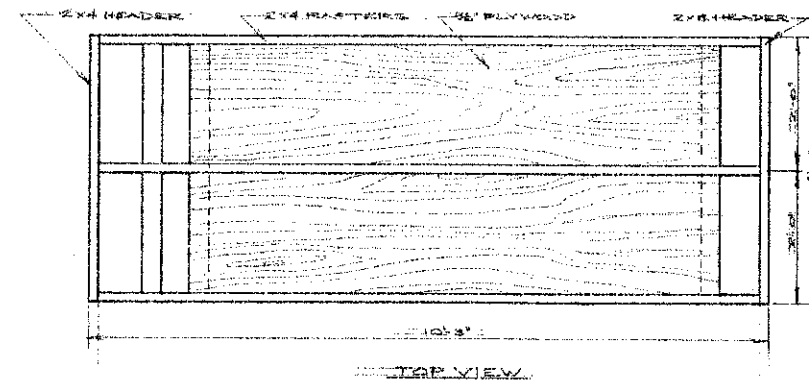
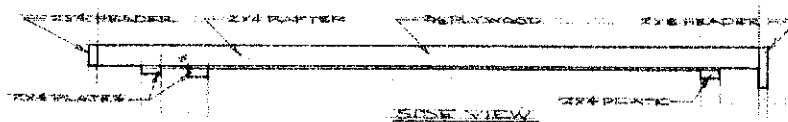


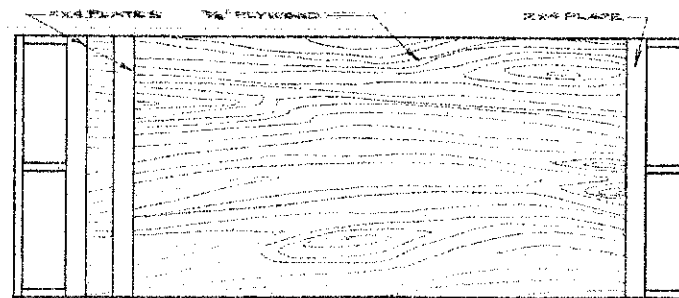
1 CROSS SECTION



TOP VIEW

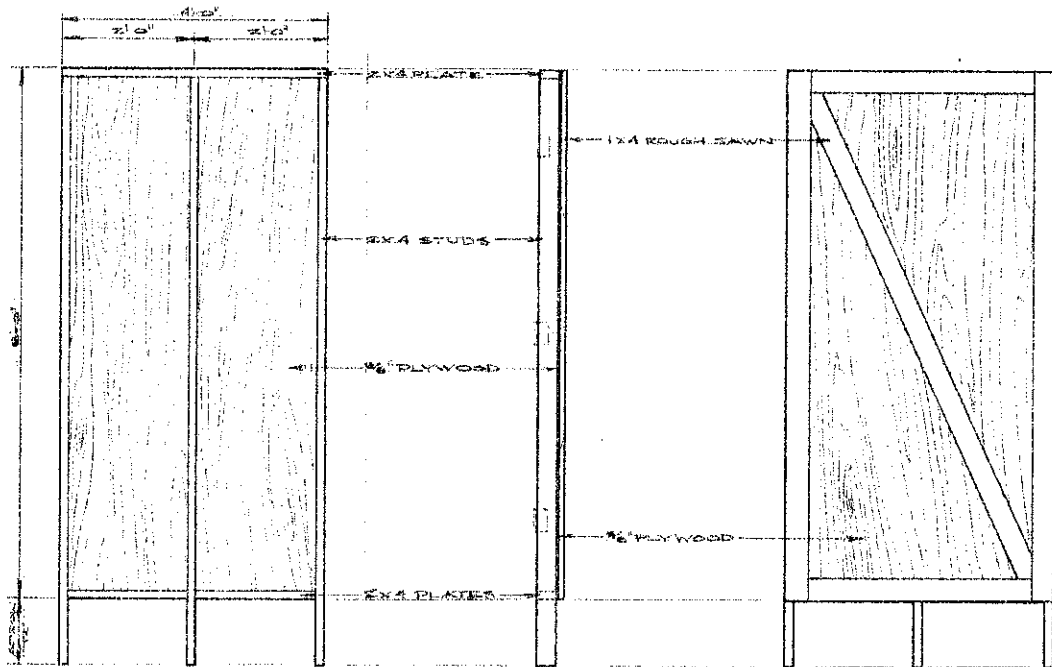


SIDE VIEW



BOTTOM VIEW

3 ROOF PANEL CONSTRUCTION



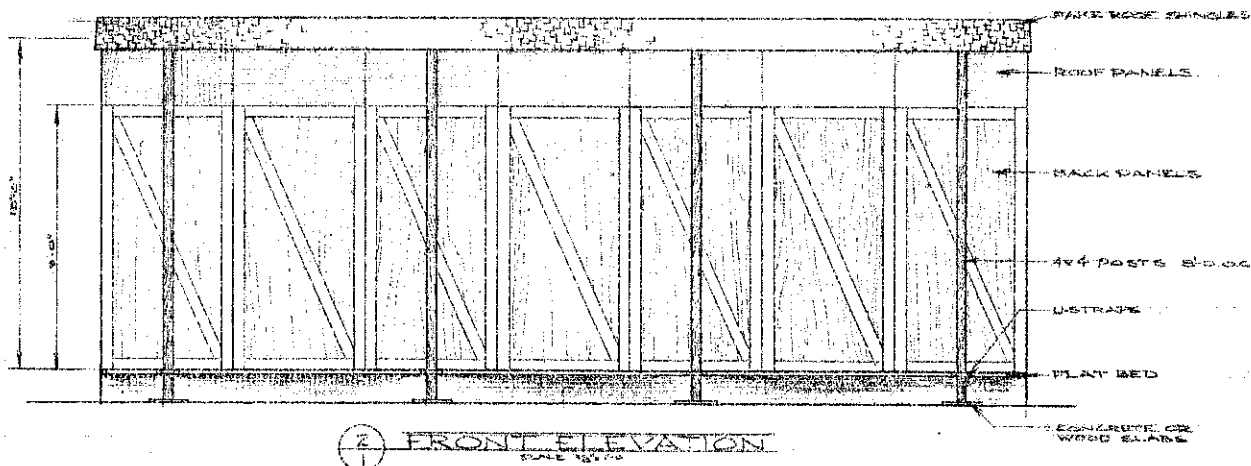
REAR VIEW

SIDE VIEW

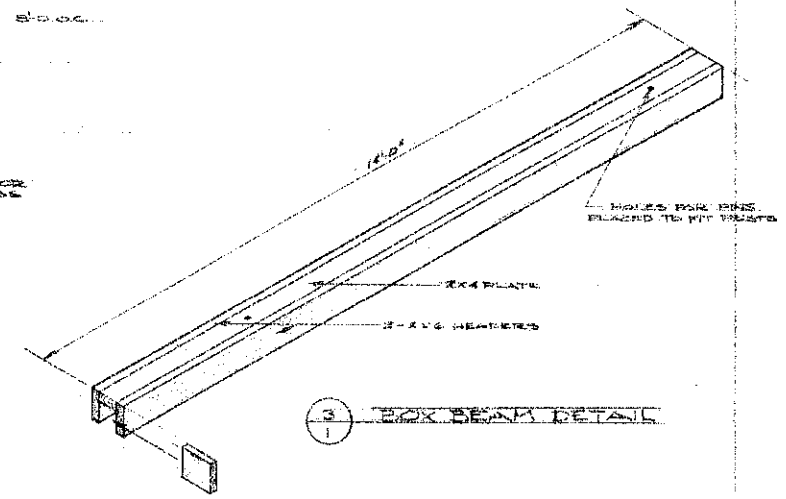
FRONT VIEW

2 BACK PANEL CONSTRUCTION

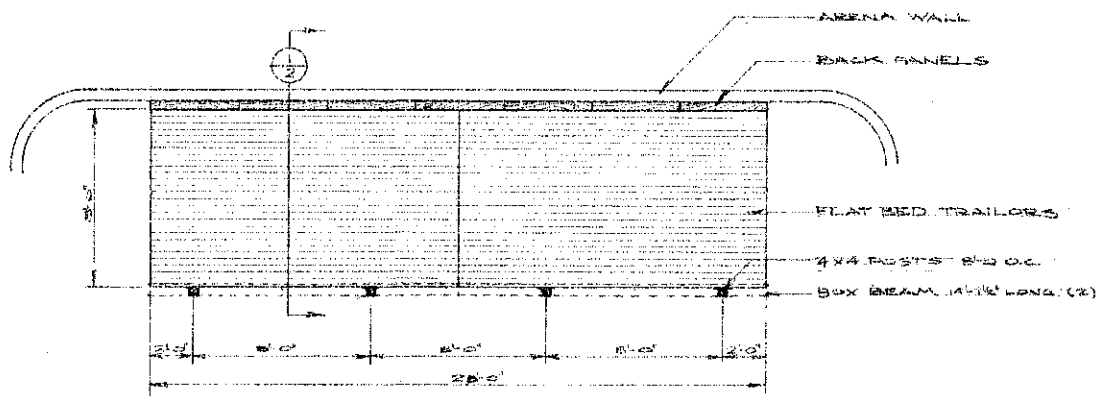
PORTABLE STAGE DESIGN			
DATE	APPROVED BY	SCALE	DRAWN BY
75	ND 760-Q-11		S. S. SONGARD
PROJECT: COMMUNITY THEATRE		REVISED	
DRAWING NUMBER		SHT 1 OF 2	



2 FRONT ELEVATION
SCALE 1/8" = 1'-0"



3 BOX BEAM DETAIL
SCALE 1/2" = 1'-0"



1 PLAN VIEW
SCALE 1/8" = 1'-0"

PORTABLE STAGE DESIGN			
	SCALE	DRAWN BY	
		REVISED	
DATE	APPROVED BY	DRAWING NUMBER	
75	ND 760-0-11	SHT 2 OF 2	