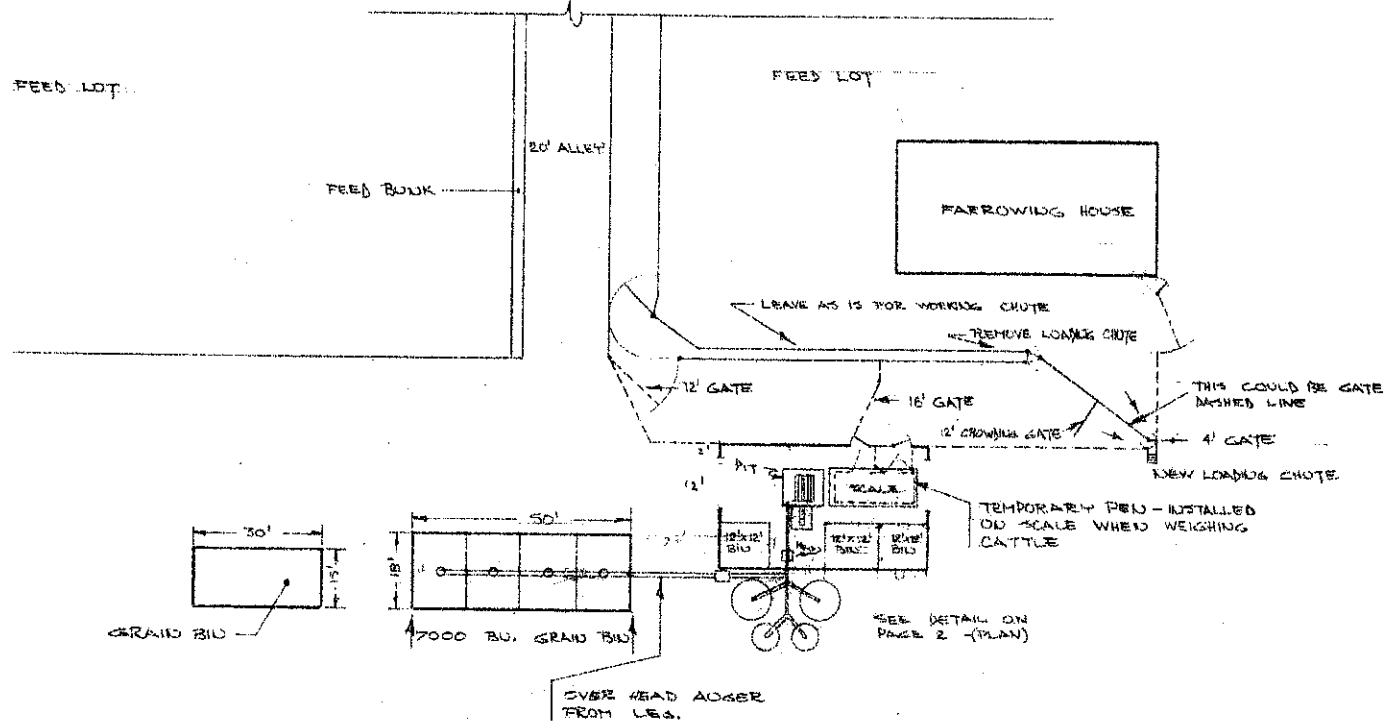


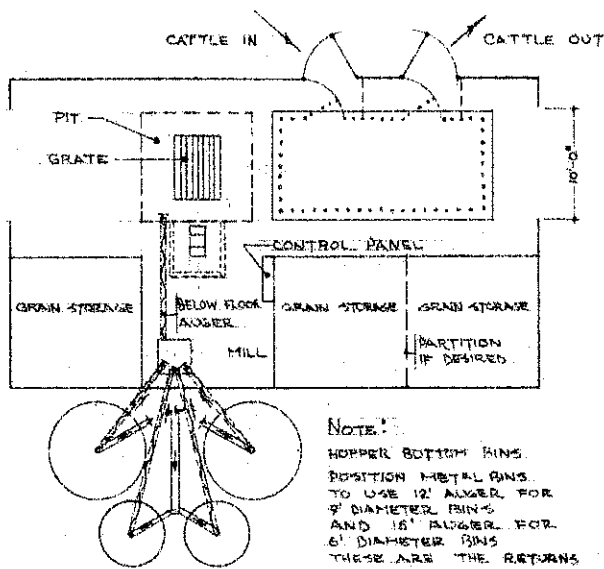
1" = 20'

POLE SHEDS.
SOME WIRE IN THIS AREA



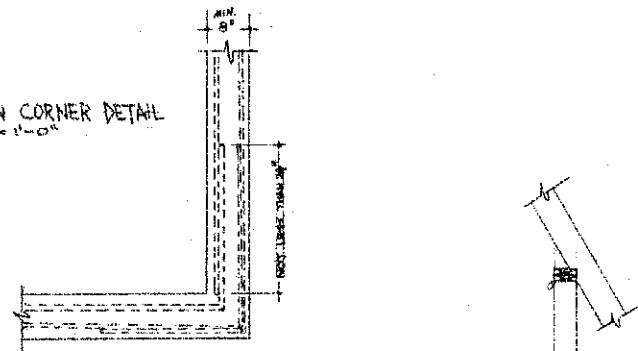
NOTES
SEE BEEF EQUIPMENT PLANS BOOK FOR FEEDS, GATES AND WORKING CHUTE CONSTRUCTION

FEED HANDLING & SCALE LAYOUT			
PRE. FOR PAUL FEDDER - PAGE, U. DAK.	SCALE	DRAWN BY WHE	
PRE. BY N.D. S.U.	DIRECTION SERVICE - AGR. EDGR. DEPT		DATE
APRIL, 1967	N.D. TSB-1-7	SHEET NUMBER 1 of 2	

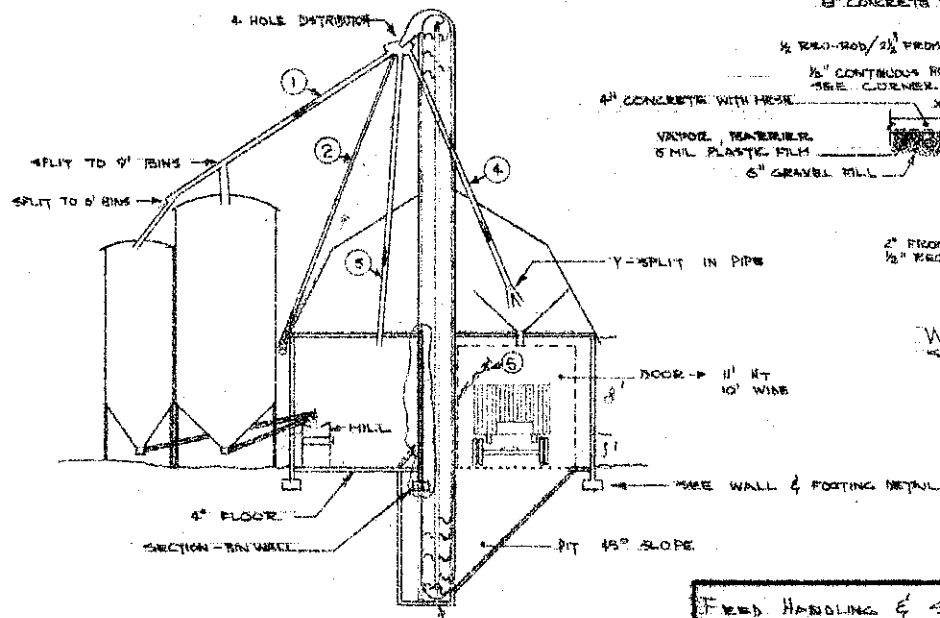
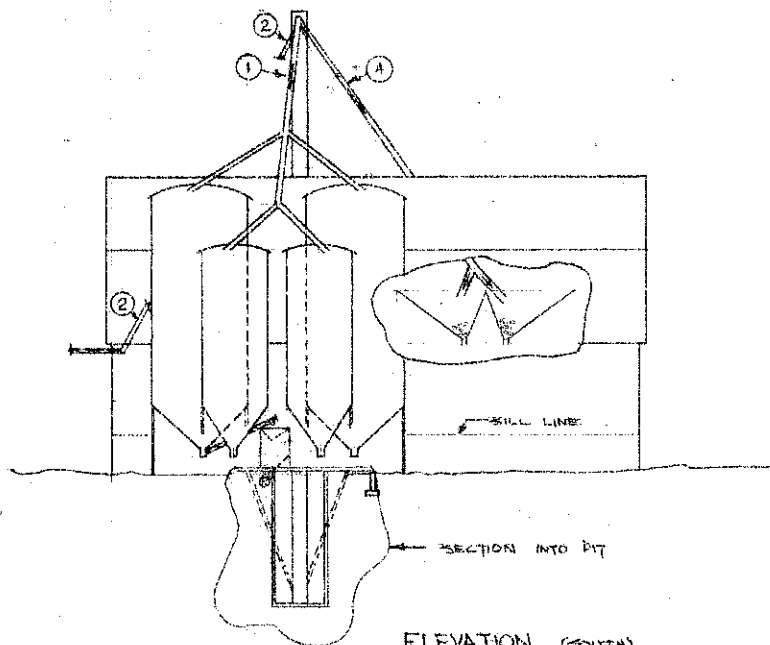


NOTE:
HOPPER BOTTOM BINS.
POSITION METAL BINS.
TO USE 12" ALUGER FOR
7" DIAMETER BINS
AND 16" ALUGER FOR
6" DIAMETER BINS
THESE ARE THE RETURNS

FOUNDATION CORNER DETAIL
SCALE: 1/2" = 1'-0"



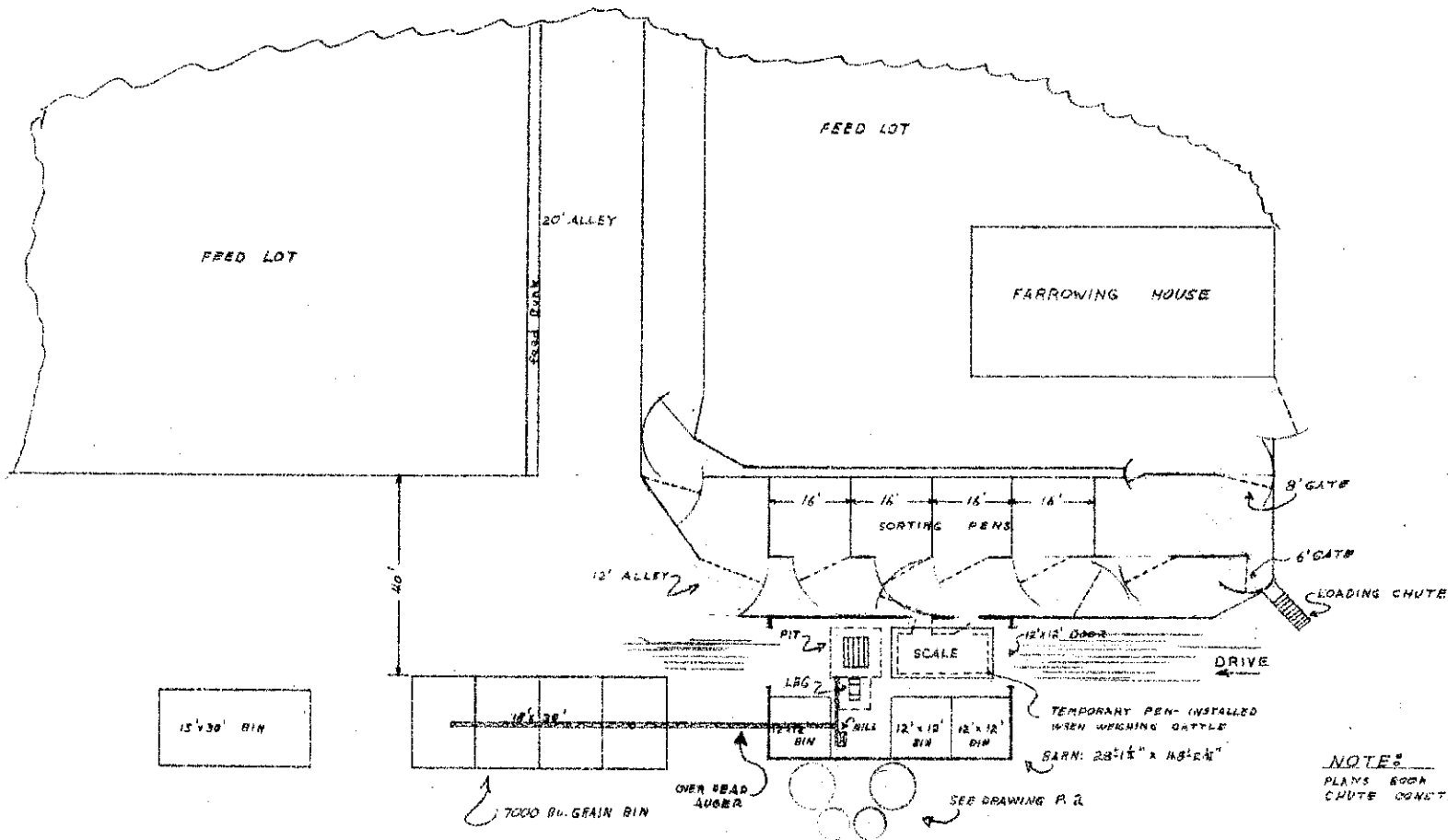
- ① TO METAL BINS
- ② TO OUTSIDE WOOD BINS
- ③ TO INSIDE BINS
- ④ TO TRUCK LOADING - OVER PIT
- ⑤ OPTIONAL: FOR EMPTYING BINS.
USE BIN FOR GROUND FEED



SECTION
SCALE: 1/8" = 1'-0"

FEED HANDLING & SCALE LAYOUT

DATE: FOR	DATE	SCALE
BY: [Signature]		
N. H. S. U. EXTENSION SERVICE - AGR. ENGE. DEPT.		
PROJECT NO.	APPROVED BY	DATE
ND. 75B-1-7		
PAGE 2 OF 3		



NOTES: SEE BEEF EQUIPMENT PLANS BOOK FOR PENS, GATES, AND CHUTE CONSTRUCTION.....

SCALE: 1/16" = 1'

FEED HANDLING & CORRAL LAYOUT (REVISED)		
PRE. FOR Paul Eaddy	SCALE	DRAWN BY C.A.P.
PRE. BY N.D.S.U. Ext. Serv. A.E. Dept		REVISED
DATE June '65	APPROVED BY N.D. 75B-1-7	DRAWING NUMBER 3 of 3