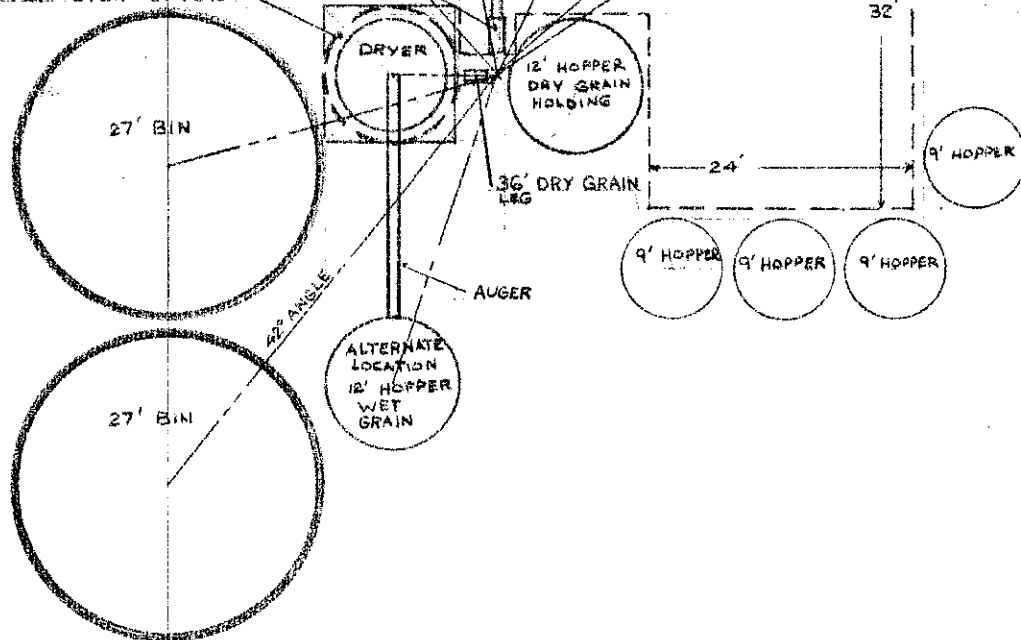


MAIN LEG - 8 1/2' HIGH  
2000 - 2500 BU/HR

WET GRAIN HOLDING  
12' HOPPER OVER DRYER



OVERHEAD AUGER

18' DIA. BINS - 24' TO PEAK  
3400 BU EACH  
27' DIA BINS - 36' TO PEAK  
13,500 BU EACH

The Engineer - Grain Dept

GRAIN HANDLING SYSTEM			
JIM BUELING SHELDON		SCALE 1" = 8'	DRAWN BY C.R. LAUBERTY REVISED
NDSU EXTENSION AGRICULTURAL ENGINEERING			
DATE 9-16-71	APPROVED BY N.D. 756-0-1	DRAWING NUMBER 1 SH.	