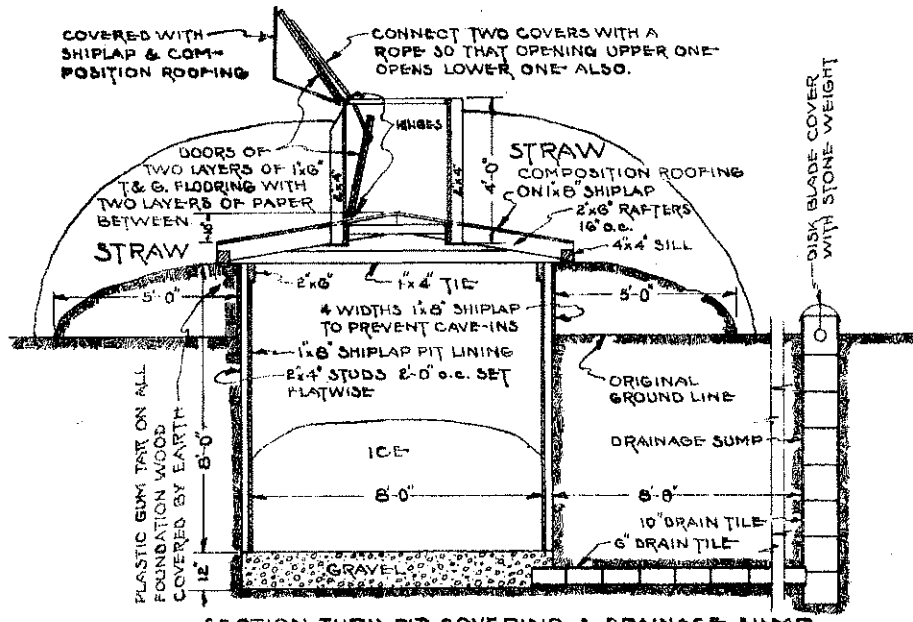
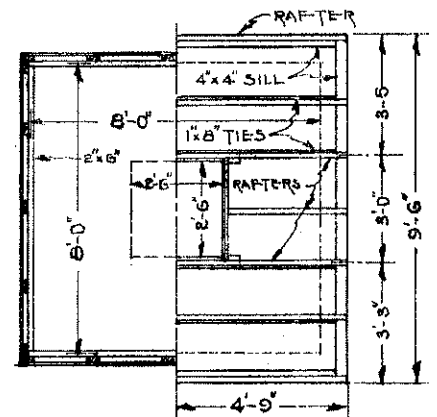


WHERE HEAVY LOADS ARE TO BE RAISED & LOWERED, BUILD A TRIPOD OF POLES AND USE BLOCK AND TACKLE.



SECTION THRU PIT, COVERING & DRAINAGE SUMP
SECTIONAL VIEW OF ICE WELL



HALF PIT PLAN AND HALF RAFTER PLAN
STRAW COVERED ICE WELL
SCALE $\frac{3}{8} = 1'-0"$

BILL OF MATERIALS

NO. REQ.	SIZE	DESCRIPTION
7	2x6x10-8	RAFTERS
4	1x4x10-8	TIES
4	4x4x10-8	SILL
200 SQ. FT.		COMPOSITION ROOFING
650 "	1x12	SHIPLAP
2	2x4x8-0	HATCH
1	1x6x10-0	"
52	2x4x8-0	STUDS
4	2x6x10-0	"
4 CU. YD.		GRAVEL
10 FT.	6"	DRAIN TILE
12 FT.	10"	"
1 PT.		EXTERIOR PAINT
1 GAL.		PLASTIC GUM TAR
15#	8d	COMMON NAILS
5#	10d	"
5#	20d	"
50 SQ. FT.	1x6	T & G. FLOORING

ROOFING NAILS SELECTED.
ASPHALT PLASTIC CEMENT, IF NEEDED.

COOPERATIVE EXTENSION WORK IN
AGRICULTURE AND HOME ECONOMICS
STATE OF NORTH DAKOTA
NORTH DAKOTA AGRICULTURAL COLLEGE
AND
U. S. DEPT. OF AGRICULTURE COOPERATING
EXT. AGRL. ENGINEER, FARGO, N. DAK.

STRAW COVERED ICE WELL

PLAN NO. N. D. 744-3-1 DRN BY J.L.S. DATE 10/18/37