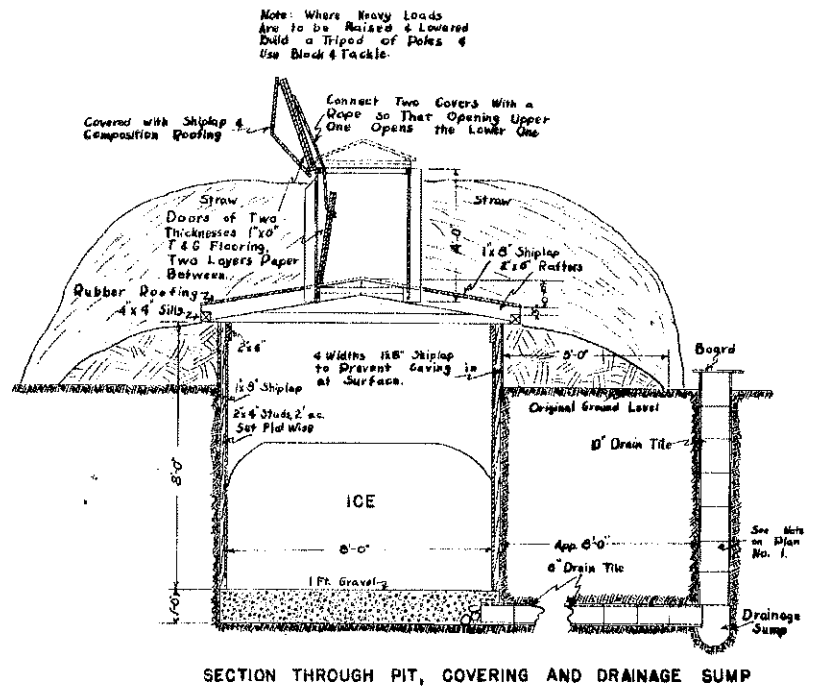
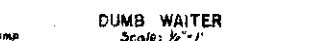


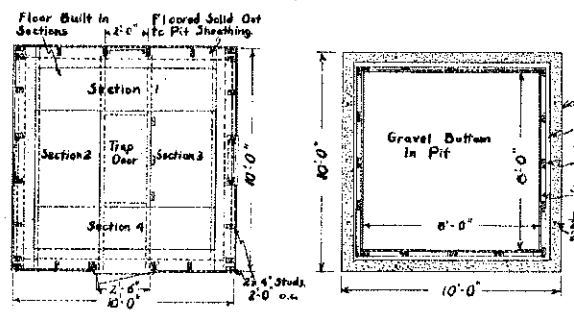
SECTION THROUGH PIT, COVERING AND DRAINAGE SUMP  
Scale: 3/8" = 1'



SECTION THROUGH PIT, COVERING AND DRAINAGE SUMP



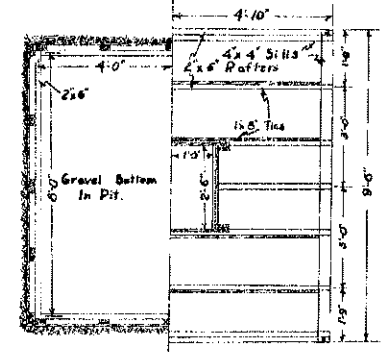
DUMB WAITER  
Scale: 1/2" = 1'



FLOOR PLAN PLAN OF FOUNDATION AND PIT  
Scale: 1/4" = 1'

BILL OF MATERIALS	
PCS	SIZE & DESCRIPTION
6	Cuad. Dig Dun Gravel-Foundation and Pit
9	3x12 Portland Cement
9	2x12 Corrugate Bolts With Washers
4	20 Lengths 3/8" Round Reinforcing Rod
23	2x4x10 Pit Studs; Diets; Window Inseets
20	2x6x12 Studs for Building; Parters
12	2x6x10 Sills; Floor Joists
580	1/2" 1x8 Shiplap for Pit Lining, Roof, etc.
385	1/2" 2x8 Clear Drip Siding
280	1/2" 2x8 Clear Drip Floor
7	Bundles 1/2" 1x8 Clear Cedar Shingles
175	Soft Thread felt for Roof
350	Soft Drip Building Paper for Floor
100	1x12 Common Pine for Trim
2	Common Nails: 1 1/2" 6d; 2 1/2" 8d; 4 1/2" 10d; 6 1/2" 12d
3	Boys Nails: 1 1/2" 6d; 2 1/2" 8d
3	Shingle Nails: 6 1/2" 3d. galv.
1	Pairs 6" T Hinges with Screws
1	Door Latch & Handle; Trap Door Handle
1	Window Buttons with Screws
1	Gal. Paint and Linseed Oil
1	Block & Tackle for Dumb-Waiter
1	Small Ventilator

Approximate Cost \$75 to \$100, Varying with Quality of Materials Selected.



PLAN VIEW  
SHIPLAP PIT LINING SHOWN ON LEFT, FRAMING DETAILS OF COVER ON RIGHT.

BILL OF MATERIALS	
PCS	SIZE & DESCRIPTION
4	Cuad. Dig Dun Gravel for Pit Bottom
12	2 1/2" 1x8 Pit Studs and Entrance Shaft
4	2x6x10 Roof Sills
6	2x6x10 Rafters
2	2x6x8 Joists Under Sills
360	1/2" 1x8 Shiplap for Pit Lining, Roof, Ties, etc.
12	1/2" 2x8 Clear Drip Floor
1	1/2" 2x8 Clear Drip for Roofing
2	1 1/2" 6d Nails; 10 1/2" 8d Nails; 2 1/2" 10d Com.
1	Pairs 4" Strap Hinges with Screws
4	Latch or Hook for Door
4	1 1/2" 6d Nails
4	2x8 Machine Bolts with 2 Washers Each

Approximate Cost \$35, Varying with Quality of Materials Selected.

PLANS FOR ICE WELL NO. 2  
Scale: 3/8" = 1'

This Type of Pit Covering Should Be Used Only When the Type Shown in Ice Well No. 1 is Not Possible. At Times Under Some Conditions, There May Be Some Odor of Mustiness from the Straw Which Might Be Objectionable for Market Milk or other Products. Ventilation Can Be Supplied Through the Entrance Shaft by Holding Lower Door Partly Open and Putting an Opening in Gables of Roof Shaped Dome.

- Filling the Ice Well with Ice.
1. Open the Pit to the Air in the Fall.
  2. Add Water to the Pit Until One to Two Inches Will Remain Over the Bottom.
  3. When the Water Freezes Solidly and Downies Frozen for Several Days and Weather Remains Cold the Filling Operation May then Program.
  4. Add from One to Two Inches of Water at a Time, After the Previous Addition Has Frozen Solidly.
  5. When the Ice Cake Reaches the Correct Height or a Little Higher the Pit Should Be Closed Tightly Until Ready for Use.
  6. Open the Pit Only as Little as Possible During the Summer.
  7. The Pit Could Also Be Filled with Ice cakes or Chunks Frozen Together by Packing in Fine Ice or Snow and then Adding Very Cold Water.

- Important Points
1. Locate the Ice Well According to Greatest Use and Convenience.
    - a. Close to a Clean Water Supply.
    - b. Close to the Milk House.
    - c. Close to the Dwelling.
  2. Keep the Pit and Ice Cake Clean. If any Products Are Spilled on the Ice Cake Clean Them Up to Prevent Objectionable Odors.
  3. Provide Good Drainage Inside and Outside Using Artificial Means if Natural Soil Drainage Does Not Exist.
- The Ice Well May Be Connected to the Dwelling if Used Mostly for Household Purposes. Place at least 5 or 6 feet Away and Connect to the Kitchen or Pantry by Means of a Passageway.

COOPERATIVE EXTENSION WORK IN AGRICULTURE AND HOME ECONOMICS  
STATE OF NORTH DAKOTA  
NORTH DAKOTA AGRICULTURAL COLLEGE  
AND  
U. S. DEPT. OF AGRICULTURE COOPERATING EXT. AGR'L. ENGINEER-FARGO, N.DAK.

ICE WELLS  
DRAWN BY A.E.DEPT.  
PLAN NO. ND744-1-1/2 TRACED BY L.K. 1/15/33