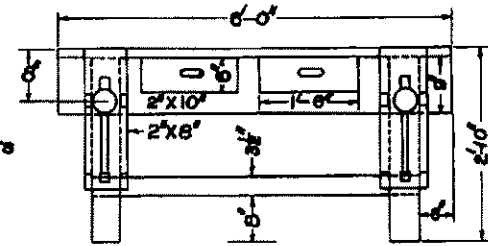
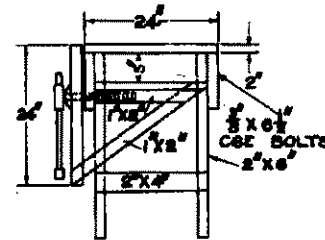
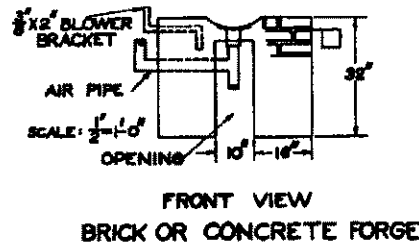
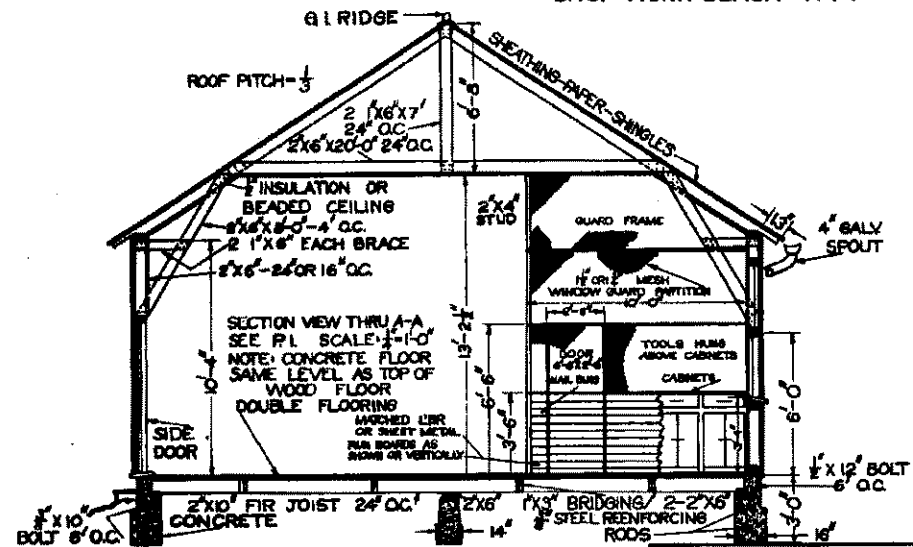


CONCRETE ANVIL BASE



$\frac{3}{8}$ " x 6" CGE. BOLTS COUNTERSUNK & PLUGGED

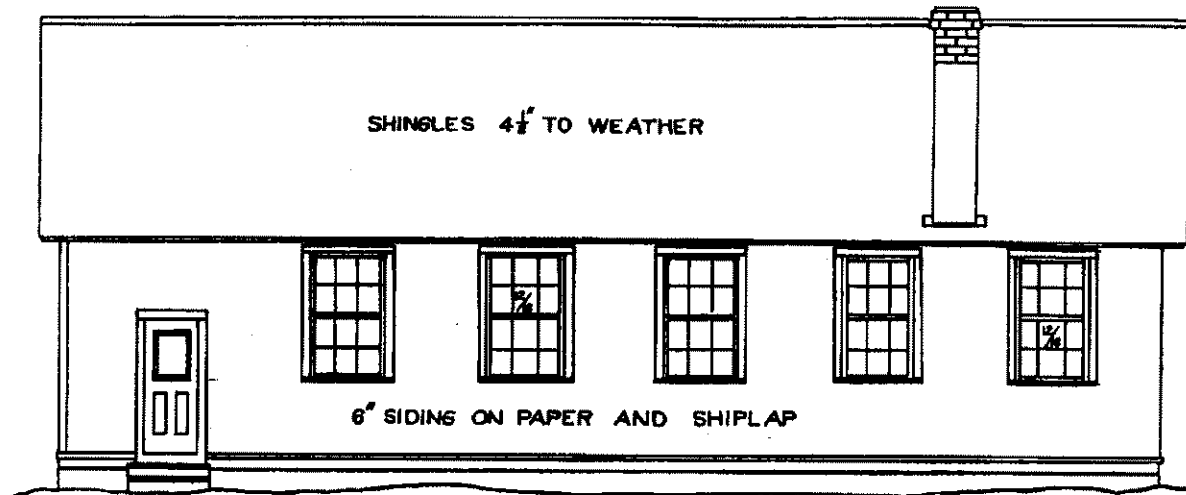
TOP VIEW
SHOP WORK BENCH NO. 1



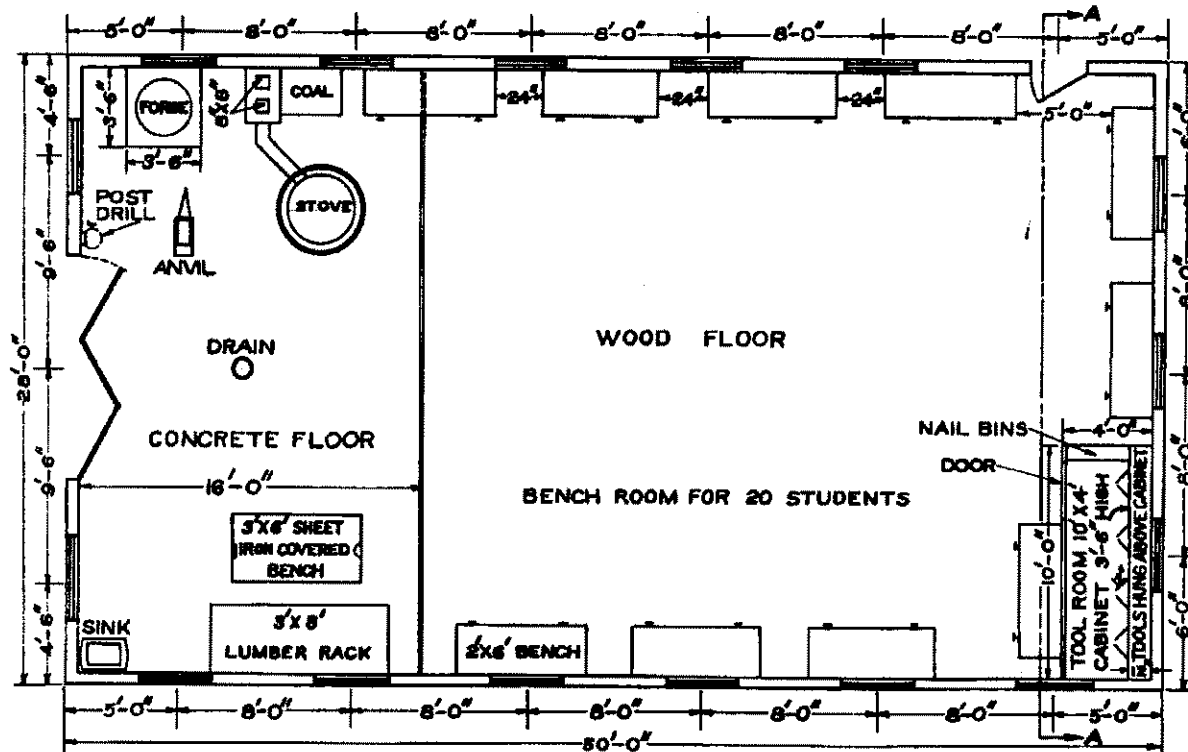
COOPERATIVE EXTENSION WORK IN
AGRICULTURE AND HOME ECONOMICS
STATE OF NORTH DAKOTA
NORTH DAKOTA AGRICULTURAL COLLEGE
AND
U. S. DEPT. OF AGRICULTURE COOPERATIVE
EXT. ASSL. ENGINEER-PROVISO. N. DAK.

FARM SHOP

PLAN NO. N.D. 741-F- $\frac{1}{2}$ DRAWN BY



LEFT SIDE ELEVATION



PLAN VIEW

FARM MECHANICS SHOP FOR HIGH SCHOOL
 DESIGNED BY: DEPT. AGR. EDUCATION GLEN C. COOK / AGR. ENGINEERING DEPT. R. C. MILLER
 NORTH DAKOTA AGR. COLLEGE - FARGO

PLAN NO.
 N.D. 741-1-12
 D-72-1-2

DRAWN BY: R. C. MILLER
 APPROVED BY: E. H. JONES
 TRACED BY: H. E. M. APR. 10 '29
 SCALE: 1/4" = 1'-0" MARCH 15 '29

COOPERATIVE EXTENSION WORK IN
 AGRICULTURE AND HOME ECONOMICS
 STATE OF NORTH DAKOTA
 NORTH DAKOTA AGRICULTURAL COLLEGE
 AND
 U. S. DEPT. OF AGRICULTURE COOPERATING
 EXT. AGR. ENGINEER - FARGO, N. DAK.