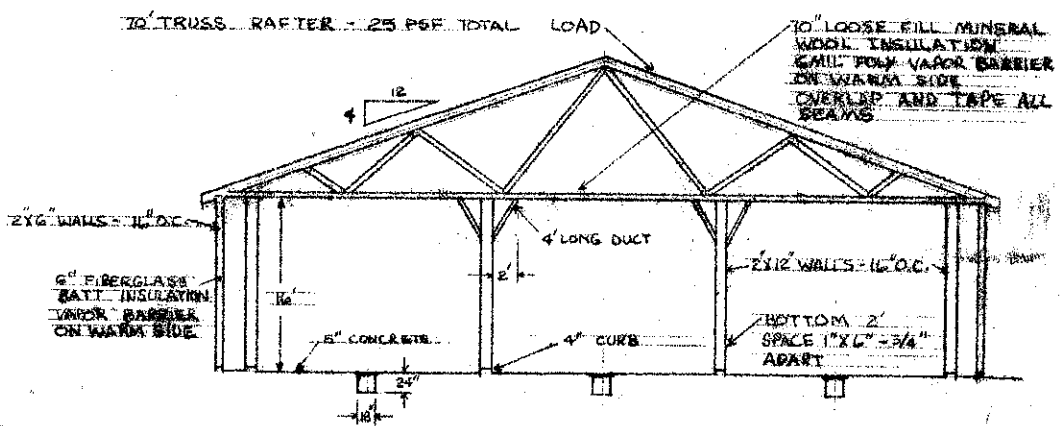
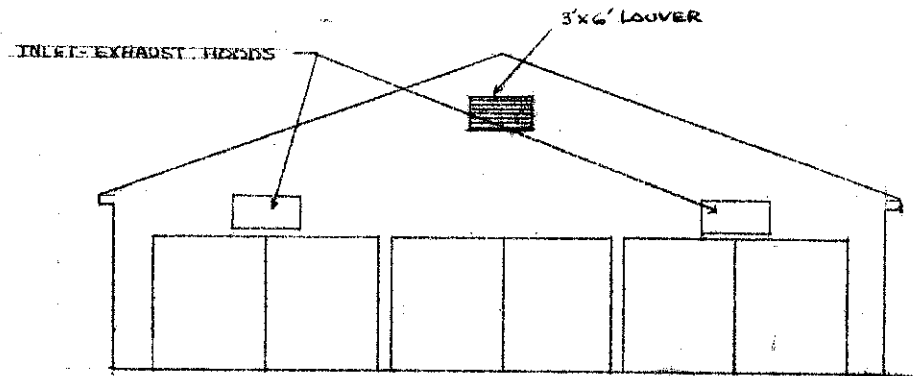
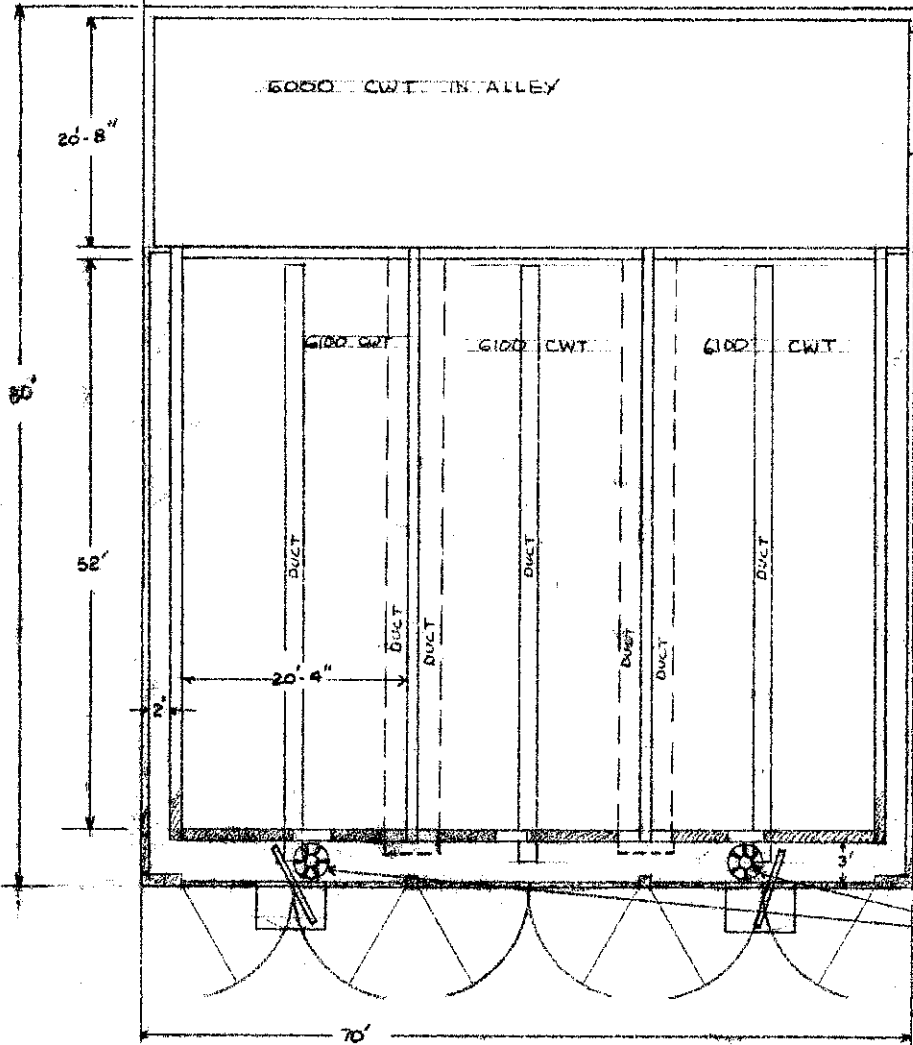


EXPANSION



9,000 CFM FAN @ 1/2" STATIC PRESSURE
 APPROX 27" DIA - 2 HP
 BOTH FANS SAME SIZE

24,000 CWT POTATO STORAGE	
DATE	APPROVED BY
3-10-78	N.D. 734-6-8
BY EXTENSION ASSOCIATION ENGINEER	BY NORTH DAKOTA STATE UNIVERSITY
PG 1	